

HIGH SPEED MEZZANINE SOLUTIONS



HIGH SPEED MEZZANINE INFORMATION

- Web links to product info including performance parameters, drawings, 3D models, etc
 - www.fci.com/mezzselect
 - www.fci.com/gigarray
 - www.fci.com/megarray
 - www.fci.com/boardandwire

Documentation

- GIG-Array® Datasheet
- MEG-Array® Datasheet
- Electrical Performance Brochure
- GIG-Array® Sample Kit
- MEG-Array® Sample Kit

Documentation available at

www.fci.com

www.fci.com/mezzselect

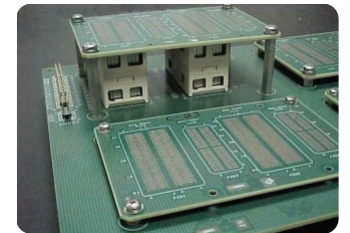
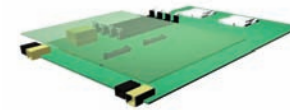
www.fci.com/gigarray

www.fci.com/megarray

www.fci.com/boardandwire

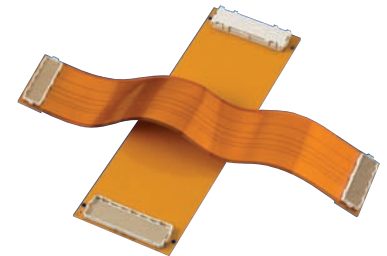
GIG-ARRAY® CONNECTOR SYSTEM (15MM-40MM STACK HEIGHTS)

- Board to Board
- Communications & Data Applications
- Servers, Storage, Switching & Transmission



MEG-ARRAY® CONNECTOR SYSTEM (4MM-14MM STACK HEIGHTS)

- Board to Board
- Communications, Data and I&I
- Servers, Storage, Switching, Transmission
- Flex Cable to Board
- Medical Diagnostic, Instrumentation



www.fci.com/mezzselect

HIGH SPEED MEZZANINE SOLUTIONS



- High Speed BGA Mezzanine Connectors are designed to meet the needs of up to 10 Gb/s
- GIG-Array® and MEG-Array® Connector Systems both utilize FCI's Patent's BGA termination design for process friendly attachment.
- Dual beam receptacle signal contact provides two points of contact for increasing high reliability.

MEG-ARRAY® CONNECTOR SYSTEM (4mm-14mm STACK HEIGHT)

Size	Type	Total Mated Height					
		4.0mm	6.0mm	8.0mm	10.0mm	12.0mm	14.0mm
100 pos.	Plug	84512					
10 x 10	Receptacle	84513					
200 pos.	Plug	84516	84516	84516	84530	84530	84530
10 x 20	Receptacle	84517	55724	84535	84517	55724	84535
300 pos.	Plug	84500	84500	84500	84578	84578	84578
10 x 30	Receptacle	84501	84502 for 5.5mm BTB	84553	84501	84502 for 11.5mm BTB	84553
400 pos.	Plug	84740	84740	84740	84520	84520	84520
10 x 40	Receptacle	74221	74388	74390	74221	74388	74390
240 pos.	Plug	74213	74213				
8 x 30	Receptacle	74217	55755				
528 pos.	Plug		10022671				
12 x 44	Receptacle		10026846				

GIG-ARRAY® CONNECTOR SYSTEM (15mm-40mm STACK HEIGHT)

200 Positions		Plug Height (part number)					
		10mm (55737)	12mm (10026802)	13mm (10060910)	15mm (55738)	20mm (55739)	25mm (10054783)
Receptacle Height (P/N)	5mm (55740)	15mm	17mm	18mm	20mm	25mm	30mm
	11mm (10081496)	21mm	23mm	24mm	26mm	31mm	36mm
	15mm (10060912)	25mm	27mm	28mm	30mm	35mm	40mm

296 Positions		Plug Height (part number)					
		10mm (55720)	12mm (10026804)	13mm (10060911)	15mm (55700)	20mm (55727)	25mm (10054784)
Receptacle Height (P/N)	5mm (55701)	15mm	17mm	18mm	20mm	25mm	30mm
	11mm (10081497)	21mm	23mm	24mm	26mm	31mm	36mm
	15mm (10060913)	25mm	27mm	28mm	30mm	35mm	40mm

Total Board-To-Board Mated Height in Black. All Dimensions in (mm)