

## USB INFORMATION

- Web links to product info including performance parameters, drawings, 3D models, etc

- [www.fci.com/usb](http://www.fci.com/usb)

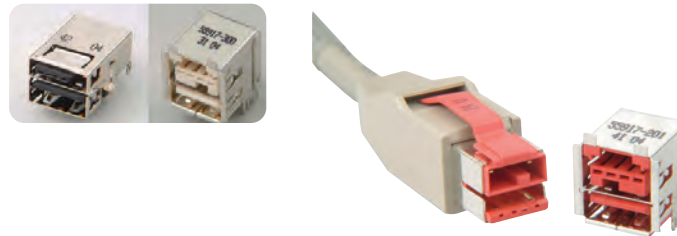
- Documentation

- Power Solutions
  - USB+Power Connectors

Documentation available at [www.fci.com](http://www.fci.com) or [www.fci.com/usb](http://www.fci.com/usb)

## USB+ POWER CONNECTOR

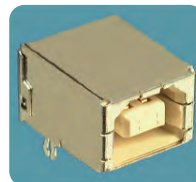
- Receptacle
- Plug kit & Plug cable assembly



## USB TYPE A RECEPTACLE



## USB TYPE B RECEPTACLE





■ USB + Power connector includes 4 additional power contacts with 5A/pin current rating. This eliminates separate power source requirement thus reducing the number of cables required. Individual different plastic key slots to distinguish between 5V, 12V, and 24V voltage requirements.

■ USB type A Receptacle meets all industry standards.

Style	Series Number	Product Type	Pin Orientation	Mount	Sensor	PCB thickness	Back shield
A	73725	S/D Receptacle	Side	PIP or T/H	Option	1.2mm	Yes
	87520	S/D Receptacle	Standard	PIP or T/H	None	1.57mm	Option
	72309	D/D Receptacle	Standard	PIP or T/H	None	1.57mm	Option
	74552	S/D Receptacle	Reversed	PIP or T/H	Option	1.57mm	Option
	87583	S/D Receptacle	Standard	SMT	None	1.57mm	None
	74626	S/D Receptacle	Reversed	SMT	Option	1.57mm	None
B	61729	S/D Receptacle	Standard	PIP or T/H	Option	1.2mm	Yes
USB+ Power	55917	Receptacle	Standard	PIP or T/H	None	1.57mm	None
	74233	Plug kit	Standard		None		None
	57489	Receptacle	Standard	PIP or T/H	None	1.57mm	None
	57496	Plug kit	Standard		None		None

Cable Assembly Description					
Cable Termination	Connector Cable End 1	Connector Cable End 2	Cable Color	Cable Length	Product Number
Single-ended	USB+Power 12V	none	Black	1.0 m	10084088-Z0100YYLF
Single-ended	USB+Power 12V	none	Black	3.0 m	10084088-Z0300YYLF
Single-ended	USB+Power 24V	none	Black	1.0 m	10084089-Z0100YYLF
Single-ended	USB+Power 24V	none	Black	3.0 m	10084089-Z0300YYLF
Double-ended	USB+Power 12V	2x4 Latch-n-Lok receptacle	Black	1.0 m	10089745-Z0100YYLF
Double-ended	USB+Power 12V	2x4 Latch-n-Lok receptacle	Black	3.0 m	10089745-Z0300YYLF
Double-ended	USB+Power 24V	2x4 Latch-n-Lok receptacle	Black	1.0 m	10089743-Z0100YYLF
Double-ended	USB+Power 24V	2x4 Latch-n-Lok receptacle	Black	3.0 m	10089743-Z0300YYLF
Double-ended	USB+Power 24V	1x8 Latch-n-Lok receptacle	Black	1.0 m	10083511-Z0100YYLF
Double-ended	USB+Power 24V	1x8 Latch-n-Lok receptacle	Black	3.0 m	10083511-Z0300YYLF
Double-ended	USB+Power 12V	2x3 Latch-n-Lok receptacle	Black	1.0 m	10083512-Z0100YYLF
Double-ended	USB+Power 12V	2x3 Latch-n-Lok receptacle	Black	3.0 m	10083512-Z0300YYLF