

# ZIPLINE™ CONNECTOR SYSTEM

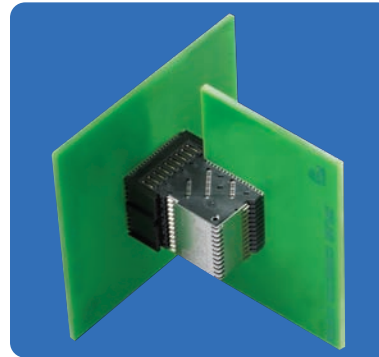
HIGHEST DENSITY HIGH SPEED CONNECTOR AVAILABLE TODAY



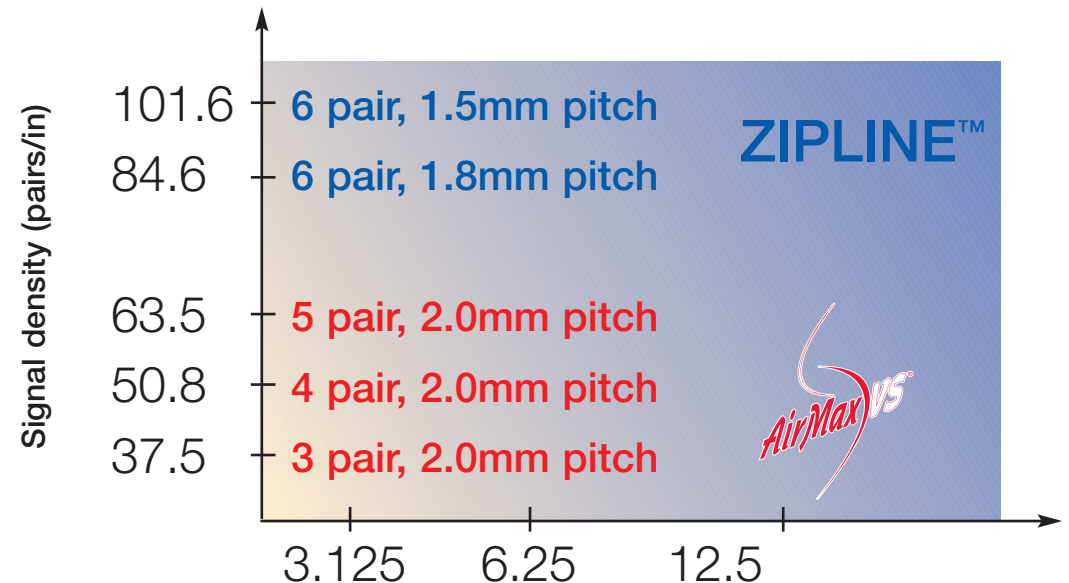
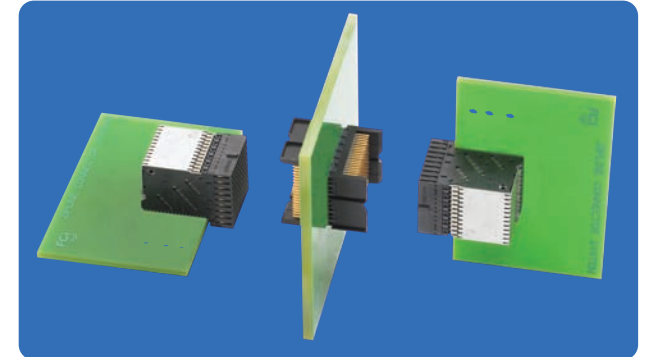
## ZIPLINE™ CONNECTOR SYSTEM INFORMATION

- Web links to product info including performance parameters, drawings, 3D models, etc
  - [www.fci.com/zipline](http://www.fci.com/zipline)
- Documentation
  - ZipLine Connector SystemsDocumentation available at [www.fci.com](http://www.fci.com) or [www.fci.com/zipline](http://www.fci.com/zipline)

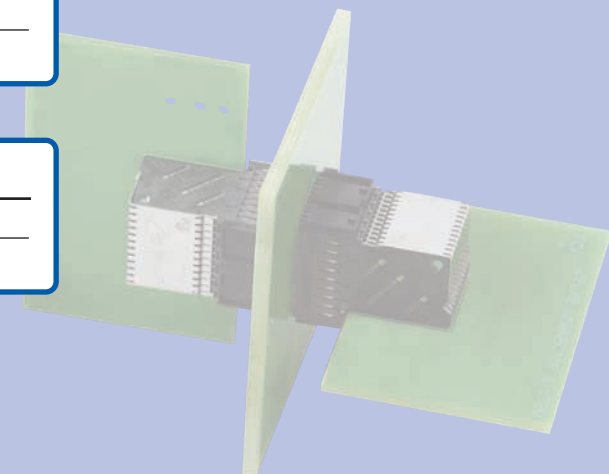
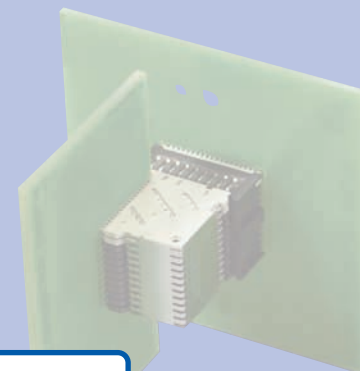
BACK PANEL



ORTHOGONAL MIDPLANE



- Highest density connector with press-fit termination
- Flexible pin assignments – power and/or signal can be intermixed
- Stainless steel organizer is grounded to top outside ground pin on every other column
- Flexible column pitch
- Hard Metric design practice - 12.5mm BP to DC edge
- 2 points of contact (Telcordia CO)
- Flatrock application tooling for R/A connectors



Signal Density	Differential Pairs/Column	Description	Pitch mm	Slot width mm	Speed
101.6	6	Zipline Backpanel	1.5	25	12.5
84.6	6	Zipline Backpanel	1.8	25	12.5
50.8	3	Zipline Backpanel	1.5	15	12.5
42.3	3	Zipline Backpanel	1.8	15	12.5

Orthogonal Pairs	Signal Pairs Grid	Description	Pitch mm	Slot width mm	Speed
36	6x6	Zipline Backpanel	3.6	N/A	12.5
72	6x12	Zipline Backpanel	1.8	N/A	12.5

