

Easy-Mark™ Labeling Software

Manage critical infrastructure components with labels generated quickly and easily with Easy-Mark™ Labeling Software. Market specific labeling application tools that assist in creating identification solutions for data centers, network applications, panel shops, construction and maintenance applications. Easy-Mark™ saves time and money with features such as WYSIWYG user interface, data import, symbol import, and pre-loaded label formats. Easy-Mark™ To Go offers a USB flash drive format that provides application portability and reduces the time and cost of procuring, installing and maintaining labeling software programs.



Key Features	Benefits
Market specific labeling application tools	Reduces time (up to 75%) and errors by: simplifying label creation for network components, panel building, construction and maintenance; selecting and formatting the optimum label for your specific application; automatically generating standards (OSHA, TIA, ANSI, etc.) compliant legends on your label
Two-sided media printing support	Saves time and reduces errors associated with creating 2-sided printed media
Data center labeling wizard	Guides the user through the TIA 942 standard in the process of creating labels used throughout a data center providing faster and more reliable infrastructure identification
Barcoding	Easy-to-use wizard quickly generates barcodes in the following symbologies: Codabar, Code 128 (A, B, C, Auto), Code 39, Code 39 Extended, Code 93, Code 93 Extended, Data Matrix, EAN/JAN 13, EAN/JAN 8, Interleaved 2 of 5, MSI Plessey, PDF417, UCC128, UPC-A, UPC-E (System0, System1), BC-Postnet
Portable version of Easy-Mark™	All the features of Easy-Mark™ on a USB flash drive, eliminating the need to install a dedicated copy of labeling software on each labeling computer
Multiple language options	Instructions and user interface are available in English, Chinese, French, German, Italian, Korean, Portuguese and Spanish
WYSIWYG (What You See Is What You Get)	Program allows you to see labels on-screen as they will appear when printed to improve productivity and reduce errors
Alpha and numeric serializations	Reduces time required to create incremented legend lists
Data file import	Reduce time and errors by importing data previously created in EXCEL [®] (.XLS) files or comma separated value (.CSV) files onto labels
Image library and symbol import	Choose from over 100 standard symbols for electrical and data communications applications and import .jpeg, .bmp, .gif, or .wmf symbols
Pre-loaded Panduit label formats	Labels for thermal transfer, dot matrix, laser and ink jet, including Ultimate ID [®] Network Labeling System, can be created quickly and easily
Quick text entry	Enter text for individual labels or an entire range of labels to save time and reduce errors
Upgradeable	Future revisions and enhancements including additional market specific labeling application tools will be available on the Panduit website

System Requirements

- 64 MB of hard drive space and 64 MB of RAM (256 MB of RAM recommended)
- Mouse or compatible pointing device
- WINDOWS[®] 2000, WINDOWS 7, XP, or Vista
- CD-ROM Drive or USB Port

[®]WINDOWS 7, WINDOWS 2000, XP and Vista, and EXCEL are registered trademarks of Microsoft Corporation in the United States and/or other countries.

Easy-Mark™ Labeling Software

Ordering Information

Part Number	Description	Std. Pkg. Qty.	Std. Ctn. Qty.
PROG-EMCD3	Easy-Mark™ Labeling Software, CD-ROM.	1	10
PROG-EM2GO	Easy-Mark™ Portable Application, USB Flash Drive.	1	10

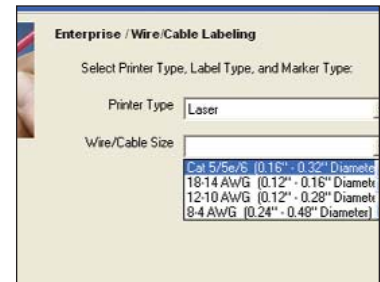
Market Specific Labeling Application Tools



Select Specific Market



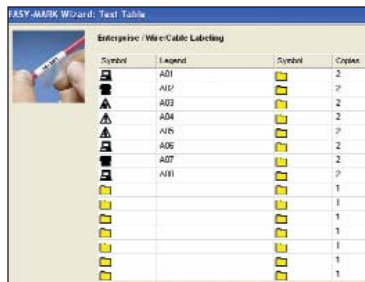
Select Labeling Application



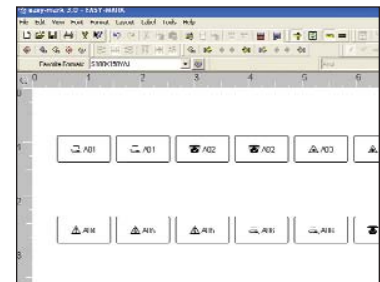
Select Details of Application



Select Method of Data Input



Enter Data



Easy-Mark™ Automatically Selects and Populates Labels

Applications by Markets

Data Center Applications:

- Data Center Project
- Room Grid Labeling
- Rack/Cabinet Location Labeling
- Panel Definition
- Port Labeling
- Patch Panel Connectivity
- Cable Labeling
- Active Equipment Identifiers
- Patch/Equipment Cords
- Grounding Labeling
- Power Labeling

Network Applications:

- Cable Labeling
- Firestop Labeling
- Grounding Labeling
- Backbone Labeling
- Patch Panel Labeling
- Faceplate Labeling

Panel Shop Applications:

- Wire/Cable Labeling
- Terminal Block Labeling
- Heat Shrink
- Safety Signs
- Pipemarking

Construction and

Maintenance Applications:

- Wire/Cable Labeling
- Heat Shrink
- Pipemarking
- Safety Signs

WORLDWIDE SUBSIDIARIES AND SALES OFFICES

PANDUIT CANADA
Markham, Ontario
cs-cdn@panduit.com
Phone: 800.777.3300

PANDUIT EUROPE LTD.
London, UK
cs-emea@panduit.com
Phone: 44.20.8601.7200

PANDUIT SINGAPORE PTE. LTD.
Republic of Singapore
cs-ap@panduit.com
Phone: 65.6305.7575

PANDUIT JAPAN
Tokyo, Japan
cs-japan@panduit.com
Phone: 81.3.6863.6000

PANDUIT LATIN AMERICA
Jalisco, Mexico
cs-la@panduit.com
Phone: 52.33.3777.6000

PANDUIT AUSTRALIA PTY. LTD.
Victoria, Australia
cs-aus@panduit.com
Phone: 61.3.9794.9020

For a copy of Panduit product warranties, log on to www.panduit.com/warranty

For more information

Visit us at www.panduit.com

Contact Customer Service by email: cs@panduit.com
or by phone: 800-777-3300 and reference IDC35

PANDUIT®

© 2009 Panduit Corp.
ALL RIGHTS RESERVED.
Product Bulletin Number **WW-IDCB35**
Replaces SA-IDCB28
12/2009