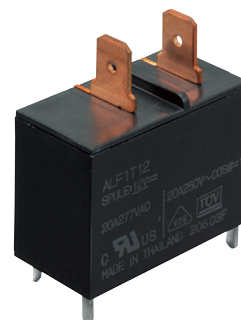
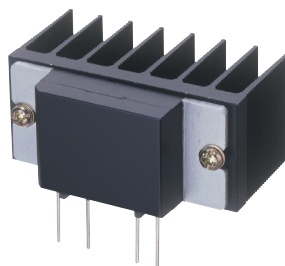


# Panasonic

# RELAYS OVERVIEW

# A comprehensive look at Panasonic's Relay portfolio



[na.industrial.panasonic.com/products/relays-connectors/relays](http://na.industrial.panasonic.com/products/relays-connectors/relays)

## ELECTROMECHANICAL RELAYS

POWER ( $\geq 2A$ )

### POLARIZED



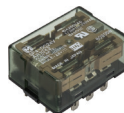
DQ, DQ-M



DE, DK, DW, DJ

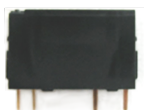


DZ



S, SP

### NON-POLARIZED



PA-N, PQ, PF



LA, LK-T, LD-P,  
LK-Q, LK-G, LK-P



LE, LF, LF-G



LQ, LZ



JS, JW, JV-N



HE, HE-PV, HE-S

### HIGH CAPACITY DC



EJ, EP, HE-V



HN, HJ, HC, HL

### SAFETY



SFS



SF, SF-Y

## ELECTROMECHANICAL RELAYS

SIGNAL ( $\leq 2A$ )

### GENERAL PURPOSE



GN, GQ



TX, TX-D, TX-S, TX-TH, TQ, TQ-SMD



DS, HY

\* Surface Mount Type is available in all Signal Relays except DS

## ELECTROMECHANICAL RELAYS

MICROWAVE DEVICES ( $\sim 8GHz$ )

### HIGH FREQUENCY ( $\sim 8GHz$ )



RA, RS, RJ, RN



RE

\* Surface Mount Type is available in RE Series

# ELECTROMECHANICAL RELAYS

# AUTOMOTIVE

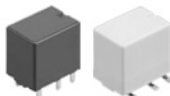
## PLUG-IN & SMD ( $\leq 40A$ )



TA, TB, TC,  
TE, TG, TJ, TH



CA, CB, CM, CV-N



CJ, CN-H, CN-M



CP, CP-P,  
CT, CT-P, CQ

## HIGH CAPACITY DC ( $\leq 300A$ )



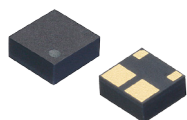
EV

\* Automotive Spec review needs to be completed for all Automotive Relays.

# SOLID STATE RELAYS

# PHOTOMOS ( $\leq 6A$ )

## CAPACITIVE-COUPLED ISOLATION



TSON/AQY2C

## MOSFET DRIVER



SSOP/APV 4-PIN



SOP/APV 4-PIN



DIP/APV 6-PIN

## OPTICAL ISOLATION



VSSOP/AQY 4-PIN



SSOP/AQY 4-PIN



SOP/AQY 4-PIN



SOP/AQV 6-PIN



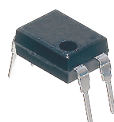
SOP/AQW 8-PIN



SOP/AQS 16-PIN



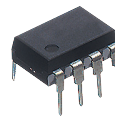
SON/AQY



DIP/AQY 4-PIN



DIP/AQV 6-PIN



DIP/AQW 8-PIN

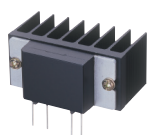


SIL/AQZ 4-PIN

# SOLID STATE RELAYS

# TRIAC/TRANSISTOR

## THROUGH-HOLE & SMD



AQ1, AQ8



AQ-C, AQ-G, AQ-H

## HIGH CAPACITY



AQ-A, AQ-J

## PHOTOTRIAC COUPLER



APT

\* Surface Mount Type is available in APT and AQH



R

**Panasonic**

Panasonic Industrial Devices Sales Company of America  
Two Riverfront Plaza, 7th Floor, Newark, NJ 07102

800-344-2112 | [na.industrial.panasonic.com](http://na.industrial.panasonic.com) | [industrial@us.panasonic.com](mailto:industrial@us.panasonic.com)

Copyright © 2016 Panasonic Corporation of North America. | All Rights Reserved. Specifications are subject to change without notice. | Relays Overview, FY16-018