

DIGI TRANSPORT WR31 FOR OIL AND GAS APPLICATIONS

Flexible, reliable 4G LTE connectivity for demanding oil and gas SCADA applications

In the harsh remote environments common in oil and gas production and distribution, the Digi TransPort® WR31 is the ideal 4G LTE solution for connecting to meters, PLCs and industrial control devices. The result: highly reliable data feeds, asset visibility, greater operational efficiency and increased safety and environmental protection.

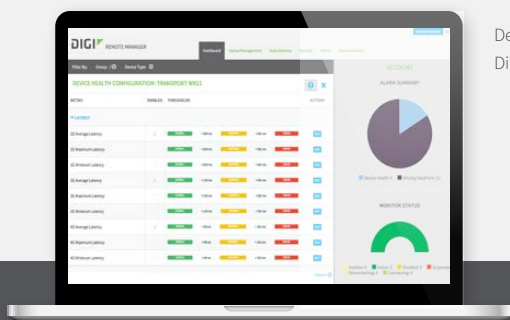
The Challenging World of Oil and Gas Production and Distribution

From the unforgiving tundra to miles beneath shale formations to isolated maritime platforms, oil and gas production and distribution take place under some of the most challenging conditions and circumstances imaginable. And with changes in global energy prices, the economics of energy exploration are even more challenging.

From optimizing reservoirs and managing distribution systems to safety assurance and asset management and maintenance, energy firms must successfully address a growing range of business and technical issues. Firms are striving to lower their risk, increase productivity and cut the costs of exploration and production.

Digi TransPort WR31: 4G LTE for Oil & Gas

- ✓ Software-selectable 3G/4G LTE supports all carriers in North America in a single device
- ✓ Global 3G/4G LTE options cover all other geographies
- ✓ License-free enterprise software and standard 5-year warranty lower the total cost of ownership
- ✓ C1D2 and ATEX rated
- ✓ 2 RJ-45 Ethernet ports
- ✓ 1 DB-9 RS-232/422/485 serial port
- ✓ 2 Digital I/O, 1 Analog input for local sensing and alarming
- ✓ Rugged aluminum enclosure
- ✓ DIN rail form factor for easy cabinet installations
- ✓ Centralized mass configuration and remote troubleshooting with Digi Remote ManagerSM



Deploy and manage the WR31 with Digi Remote Manager software.



Oil & Gas Production and Distribution Requirements

Equipment Reliability and Longevity

New extraction techniques—and a greater reliance on sophisticated technology—lead market analysts to predict that M2M device usage will nearly triple over the next four years. But how can you efficiently manage those devices? What is your plan for replacing legacy 2G and 3G devices?

Greater Automation

High-risk conditions, remote locations and a shortage of trained workers means the demand for automation is growing. Meters, sensors and controllers can provide safer and more accurate data capture. But how can you access that data across remote geographies and variable cellular networks?

Increased Safety

Operators want to know how to ensure workplace safety and environmental protections—and prevent fires, spills, leaks and other hazards. More data typically translates into greater effectiveness. But how can you capture that data in a timely, reliable manner?

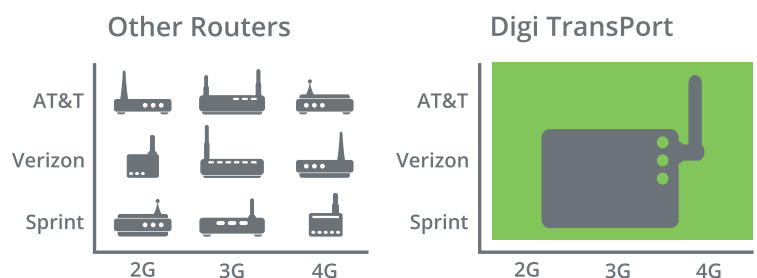
Operational Efficiency

Producers strive to protect profit margins that are under greater pressure than ever. That means more accurate billing, loss prevention and smarter maintenance strategies to prevent equipment failures. How can you be more efficient and lower your operating costs?

Digi TransPort WR31: The 4G LTE Solution for SCADA in Oil & Gas Applications

The Digi TransPort WR31 is a flexible, reliable 4G LTE router designed for the challenges of oil and gas production and distribution. Software-selectable 4G LTE networking means operators can standardize on one cellular device and then select the best carrier for each remote site. A rugged, DIN rail oriented design with C1D2 and ATEX rating support cabinet installations in hazardous locations, and Digi's license-free enterprise software provides advanced security and routing functionality without a recurring annual charge. Digi Remote Manager gives network engineers a single tool for configuring and managing remote devices.

With the Digi TransPort WR31 cellular router and Digi Remote Manager, companies can quickly deploy a comprehensive global connectivity model. You can seamlessly connect your assets, gather and integrate data to better control those assets, and remotely manage the network devices.



For more information about Digi TransPort WR31, visit www.digi.com/wr31

www.digi.com

877-912-3444 | 952-912-3444

