

# LOW VALUE POWER METAL STRIP<sup>®</sup> RESISTORS

## DC/DC Converter

### DC/DC Converter Utilizes Current Sensing Resistors with Ultra Low $\Omega$ , Low TCR, Tight Tolerance, High Current Capability, and Low Thermal EMF

Due to the increase in the sales of Notebook PC, the demand for the DC/DC Converter has been showing rapid growth because of its high energy conversion efficiency (95% vs. 50 to 70% for the Conventional IC Regulator), and its precise current-limiting capability.

However, to assure the performance of the Multiple Output DC/DC Converter, the current-limiting voltage must be detected precisely to protect the expensive Notebook PC from an overload, which in general, is due to shorts within the capacitors used in these devices.

For high energy conversion efficiency, various control ICs have been developed that utilize resistive components. (See page 2 for a typical design.)

To achieve the perfect cutoff mode of the DC Load Current at the programmed current-limiting voltage of the Control IC\*, a very stable and accurate sense resistor with the following characteristics is required for precise voltage comparison:

- **Very Low Ohmic Value**  
For maximizing energy conversion efficiency of the DC/DC Converter the ohmic value, for minimizing power consumption at the current sense resistor, should be below 25 milli-ohms.
- **Tight Tolerance**  
For maximizing the current supply within the limit of acceptable current, the tolerance of the sense resistor must be  $\pm 1\%$  or tighter.
- **Low TCR**  
Since the maximum normal DC load current is in excess of 3 amps, in general, the maximum  $\Delta R$  due to self-heating must be as low as 1000ppm across the ambient temperature range of 0°C to + 60°C. Thus, a low TCR is required for current sensing.

- **Low Thermal EMF**

For an accurate comparison between the programmed current-limiting voltage (typically,  $\leq 100\text{mV}$ ) of the Control IC and the detected voltage by the sense resistor, the error due to thermal EMF of the sense resistor must be minimized.

- \* Current level is programmed by the user by choosing ohmic value of the current sense resistor.

- **Resistance Value**

For maximizing energy conversion efficiency of the DC/DC Converter, the value of the current sense resistor is calculated according to the worst-case-low current-limiting threshold voltage of the Control IC and the peak inductor current by the following equation:

$$R_s = \frac{V_L}{I_{\text{peak}}}$$

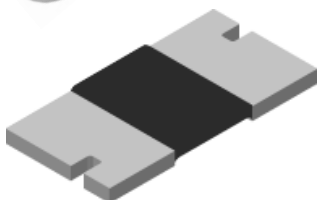
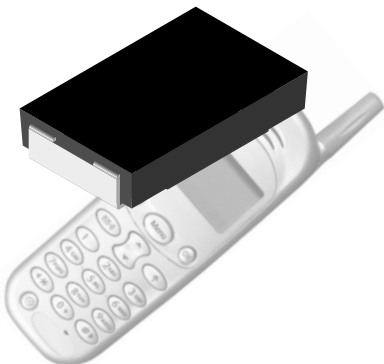
Where:  $R_s$  = Sense Resistor ( $\Omega$ )

$I_{\text{peak}}$  = Peak Inductor Current\* = Maximum DC Load Current) x 1.15

$V_L$  = Worst-case-low current-limiting threshold voltage

The key factor in determining the resolution (current-limiting threshold voltage) of the Control IC is its semiconductor noise. Typical resistance values utilized in various control ICs are 20 to 25 milli-ohms.

The Vishay Dale<sup>®</sup> WSL-0805, WSL-1206, WSL-2010, WSL-2512, WSL-0805-18, WSL-1206-18, WSL-2010-18, WSL-2512-18, WSR2 and WSR3 can provide extremely low values down to 1 milli-ohms with one resistor. This saves mounting costs and space, and improves the MTBF of the DC/DC Converter. In comparison, with conventional cermet chips, four to six chips are needed to achieve very low ohmic values; and with conventional thin film chips, at least two chips are needed due to their low power capability.





**• Terminal Construction**

Down to 1 milli-ohms, two terminal construction is accepted for the DC/DC Converter. However, when better accuracy is required the four-terminal WSK-2512 is available. Four-terminal construction will reduce as mounted resistance tolerance variations:

- reduce lead resistance
- reduce TCR of copper terminal
- reduce TCR of solder joint.

**• High Current Capability**

The maximum DC load current of an up-to-date Notebook PC with high-speed CPU, large memory (D-RAM) and the CD-ROM is in excess of 3 amps. In this case, the sense resistor must be able to withstand a high continuous current of at least 1.15 times the DC load current (peak inductor current) due to the effect of the inductor connected in series for smoothing the circuit. Otherwise, the DC/DC Converter will fail to function due to a failed sense resistor.

**• High Temperature Capability**

Utilization of DC/DC converters in industrial and automotive applications may expose components to higher temperature environments. The sense resistor must be capable of operating in high temperature conditions with minimal reduction (derating) of rated power.

The Vishay Dale® WSL-0805, WSL-1206, WSL-2010, WSL-2512, WSL-0805-18, WSL-1206-18, WSL-2010-18, WSL-2512-18, WSR2 and WSR3 will withstand high temperatures. In comparison cermet chips have poor high temperature capability. See Chart 1 for high temperature comparison.

**• TCR**

At steady state conditions, Notebook PCs generally require input currents in excess of 3 amps. For accurate current-limiting control by the Control IC, the DR of the sense resistor, due to self-heating, must be low enough to ensure that the accuracy of comparison between the worst-case-low current-limiting threshold voltage of the Control IC and the sense resistor voltage is  $\pm 5\%$ .

To meet this standard current limit, the dynamic tolerance (no load, static resistance tolerance +  $\% \Delta R$  caused by self-heating + apparent  $\% \Delta R$  caused by thermal EMF) allocated to the sense resistor is 2%; and, to assure 2% tolerance of the sense resistor across the temperature range of 0°C to + 100°C (ambient temperature + self-heating), the resistor must have a low TCR. The Vishay Dale® WSL-0805, WSL-1206, WSL-2010, WSL-2512, WSL-0805-18, WSL-1206-18, WSL-2010-18, WSL-2512-18, WSR2 and WSR3 have the lowest TCR in the industry. See Chart 2 for TCR comparison.

- Vishay Dale® sense resistors provide characteristics required and demanded by DC/DC Converter operations that cannot be met with other conventional cermet and thin film resistive chip components.

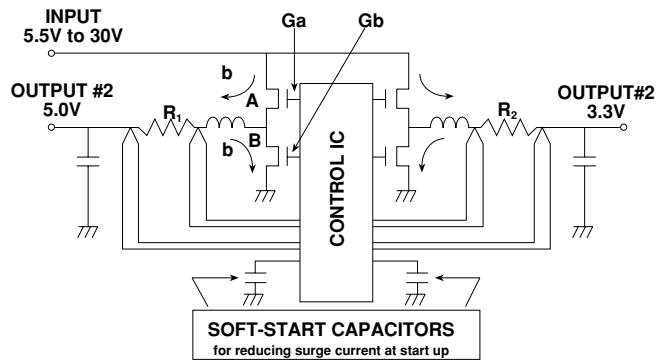
\* For smoothing circuit.

**Typical Control IC for Dual Output Step-down DC/DC Converter**

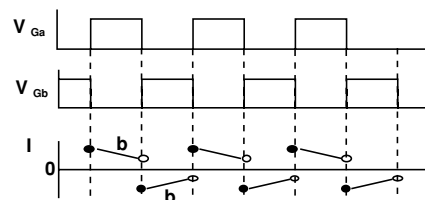
The two key functions of a Control IC are to supply dual step-down DC potential energy and to perform accurate current limiting which is programmed by the user.

- A. A voltage drop across a sense resistor connected in series between the N-channel Power MOSFET and the output terminal is monitored in order to compare the worst-case-low current-limiting threshold voltage of the Control IC with the current level programmed by the user via sense resistor.
- B. The sense resistor also functions as a part of the smoothing circuit to supply high linear DC current.

The sequence of the Dual Output Step-down Converter's steady state operations is first the gate (Ga) turns on the N-channel Power MOSFET (A) and sinks the DC current into the load until the terminal voltage reaches the programmed positive voltage of the Control IC, then, second, (Ga) cuts off (A), and (Gb) turns on (B), and leaks the DC current to the load until the terminal voltage reaches the programmed negative voltage, then, third (Gb) cuts off (B) • • •.



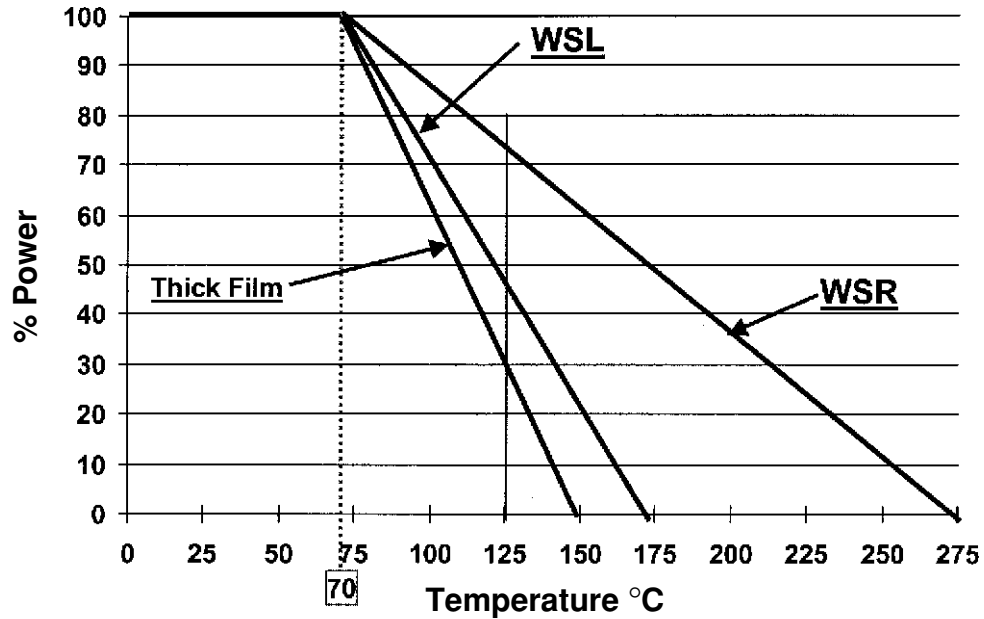
R<sub>1</sub> and R<sub>2</sub>: Current Surge Resistors  
A and B: N-Channel Power MOSFETs





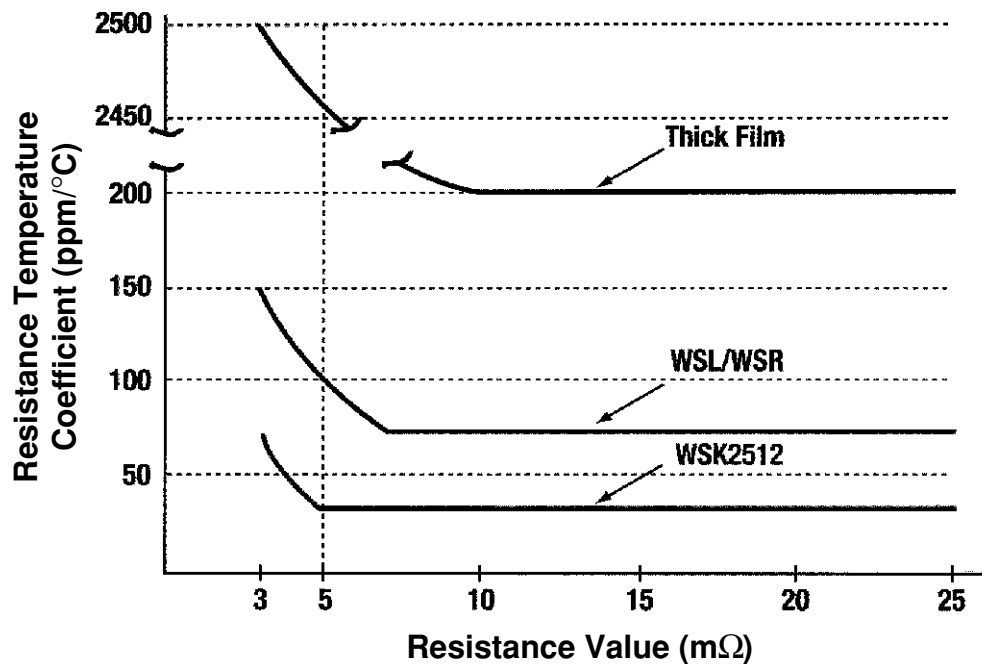
**CHART 1**

**POWER METAL STRIP - HIGH TEMPERATURE CAPABILITY**



**CHART 2**

**POWER METAL STRIP - TCR PERFORMANCE**



# WORLDWIDE SALES CONTACTS

## DISCRETE SEMICONDUCTORS AND PASSIVE COMPONENTS

### THE AMERICAS

**VISHAY AMERICAS**  
ONE GREENWICH PLACE  
SHELTON, CT 06484  
UNITED STATES  
PH: +1-402-563-6866  
FAX: +1-402-563-6296

### ASIA

**VISHAY INTERTECHNOLOGY  
ASIA PTE LTD.**  
25 TAMPINES STREET 92  
KEPPEL BUILDING #02-00  
SINGAPORE 528877  
PH: +65-6788-6668  
FAX: +65-6788-0988

### JAPAN

**VISHAY JAPAN CO., LTD.**  
SHIBUYA 3F, GE EDISON BUILDING  
3-5-16 SHIBUYA  
SHIBUYA-KU  
TOKYO 150-0002  
JAPAN  
PH: +81-3-5464-6411  
FAX: +81-3-5464-6433

### EUROPE

**VISHAY ELECTRONIC GmbH**  
GEHEIMRAT-ROSENTHAL-STR. 100  
95100 SELB  
GERMANY  
PH: +49-9287-71-0  
FAX: +49-9287-70435

**VISHAY S.A.**  
4, RUE DE SALONIQUE  
95101 ARGENTEUIL  
FRANCE  
PH: +33-1-39-98-22-00  
FAX: +33-1-39-98-22-05

**VISHAY LTD.**  
PALLION INDUSTRIAL ESTATE  
SUNDERLAND, SR4 6SU  
GREAT BRITAIN  
PH: +44-191-514-4155  
FAX: +44-191-567-8262

## ONLINE INFORMATION

For product information and a current list of sales offices, representatives and distributors, visit our website:

**[www.vishay.com](http://www.vishay.com)**

**ONE OF THE WORLD'S LARGEST MANUFACTURERS OF DISCRETE SEMICONDUCTORS AND PASSIVE COMPONENTS**