

Omron Electronic Components: The Quality, Flexibility and Global Support You Need

An Experienced Partner

With over 70 years experience and 5.5 billion US dollars in sales, Omron is one of the world's largest suppliers of electronic controls and components. Our extensive investment in research, and our commitment to developing innovative products based on the latest technologies has established our position as a global market leader to the Communications industry.

Quality First: Our Commitment, Your Benefit

Omron Quality is a mandate, not an option. We 100% test each product and examine every physical, mechanical, and electrical parameter on the manufacturing line before it leaves the factory. All products are fully RoHS compliant.

World Recognized Flexibility and Support

Omron offers over 300,000 products, product customization, and co-development options. We also provide a complete network of global and local sales and technical support to assist you from design to delivery.

For More Detailed Information...

Visit Us Online: [www.components.omron.com](http://www.components.omron.com)

- Browse Omron's full range of Product information and selection guides.
- Download PDF's – datasheets, brochures, and more.
- Find Omron solutions for competitive products.
- Locate a Distributor and search for available inventory.

Call Us:

1-847-882-2288 Monday through Friday,  
7:30 a.m. to 6:00 p.m. Central Time (CT)

Email Us:

[components@omron.com](mailto:components@omron.com)

REQUIRED PRECAUTIONS

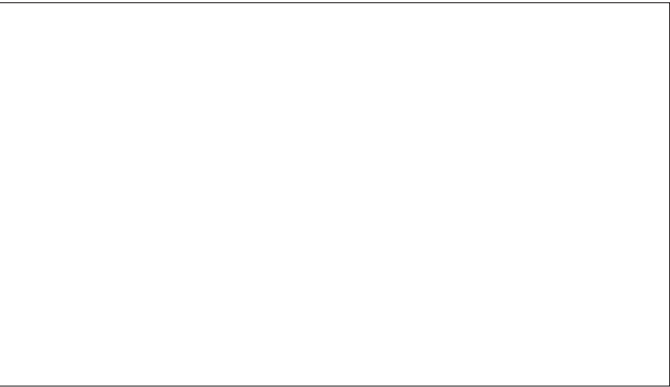
It is the buyer's sole responsibility to ensure that any omron product is fit and sufficient for use in a motorized vehicle application. Buyer shall be solely responsible for determining appropriateness of the particular product with respect to the buyer's application, end product, or system. Buyer shall take the application responsibility in all cases, but the following is a non-exhaustive list of applications for which particular attention must be given:

- (i) Outdoor use; uses involving potential chemical contamination or electrical interference, or conditions or uses not described in this document.
- (ii) Use in consumer products or any use in significant quantities.
- (iii) Energy control systems, combustion systems, railroad systems, aviation systems, medical equipment, amusement machines, vehicles, safety equipment, and installations subject to separate industry or government regulations.
- (iv) Systems, machines, and equipment that could present a risk to life or property.

Never use the product for an application involving serious risk to life or property or in large quantities without ensuring that the end product as a whole has been designed to address relevant risks, and that the omron product is properly rated and installed for its intended use.

OMRON ELECTRONICS COMPONENTS LLC  
North and South America

55 Commerce Drive  
Schaumburg, IL 60173



[www.components.omron.com](http://www.components.omron.com)

# Solutions for the Communications Market

## Electronic Components



Optical and Electromechanical Components for the communications market

Relays  
Switches  
Connectors  
Optical Components

Y061-E-01  
©2006 Omron Electronic Components LLC  
Printed in U.S.A. 4/06



# Solutions for the Communications Market

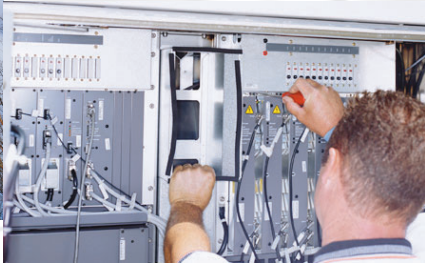
You can browse Omron's full range of electronic components at [www.components.omron.com](http://www.components.omron.com)



Omron Electronic Components LLC provides a variety of electronic component solutions throughout the entire Communications Industry. Whether you are designing Telephone Switching Equipment, Mobile Base Stations, Broadband Equipment, Broadcast Studios or CATV, Omron has a solution for you. In the areas of mobile communications and network implementation Omron has introduced a growing range of innovative products. Providing quality-driven products and reliable support to satisfy the design needs of the Communications Industry worldwide.



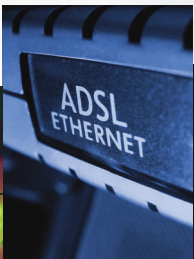
DSLAMs



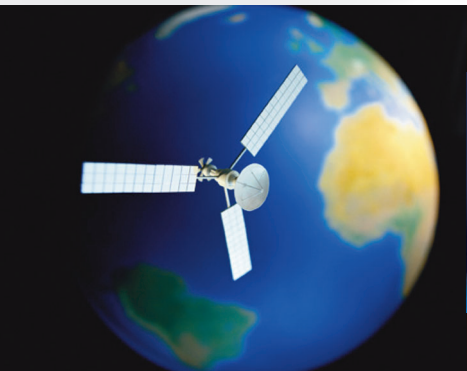
Broadcast



Broadband



FTTx

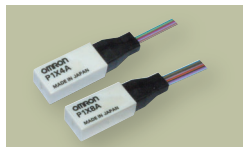


Mobile Basestations

Optical Network Equipment

Aerospace

## OPTICAL COMPONENTS



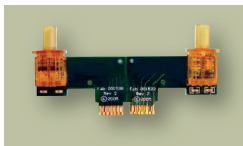
**Optical Multiplexer**  
World's smallest Singlemode (SM) CWDM optical multiplexer/demultiplexer using a state-of-the-art integrated architecture. Combines Omron's Micro Lens Array with thin film filters in a proprietary structure.



**Passive Optical Switch**  
These components deliver great value in a small form factor. Each includes a very small mechanical switch actuator with Omron's MLA. Use them for redundancy and restoration, add/drop, and signal monitoring and routing.

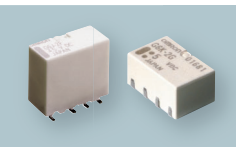


**Micro Lens Array**  
Customizable, polymer Micro Lens Arrays enable low-cost, free space optical connections. Standard products available include 12 ch. on 250 um pitch with mounting holes for MT guidepins.

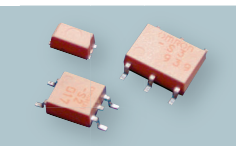


**CWDM TOSA/ROSA**  
The Afterburner(TM) SX4 is a protocol independent, CWDM-based optical subassembly (OSA), capable of transmitting (Tx) and receiving (Rx) 4 optical channels from one multi-mode fiber. The SX4 enables 10GbE over MMF.

## RELAYS



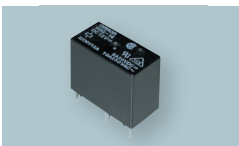
**Low Signal Relays**  
Omron delivers accuracy and reliability while saving space and power in these tiny components. Our signal relays are available in a multitude of packaging and mounting options for every design need.



**MOS FET Relays**  
The smallest, fastest precision components on the market, Omron's MOS FET relay line delivers the speed and accuracy needed for every telecom switching application.

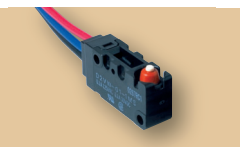


**HF/RF Relays**  
With the industry's widest range of design options, our high frequency relays utilize Omron's patented microstrip line construction to eliminate cross-talk and improve performance. Compared to other HF switching devices, Omron's isolation, insertion loss and switching power are unmatched.



**Power PCB Relays**  
Omron, the #1 seller of relays worldwide, has a relay tailored to your power switching needs, including fully sealed versions. Coil voltages range from 3V DC which can be IC driven, up to 48V DC.

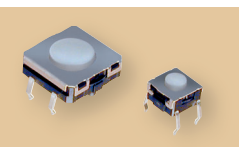
## SWITCHES



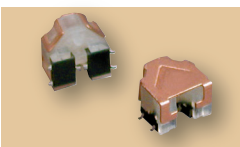
**Detection Switch**  
Sealed and unsealed snap-action switches are available with a variety of ratings, actuators and termination options. Sealed versions, rated to IP67 and IP50, are suitable for use in "wet" locations.



**Domes/Dome Arrays**  
Available as single point of contact Domes or customizable Arrays. Provides crisp, tactile feedback for panel designs when coupled with your overlay and PCB design.



**Tactile Switches**  
Consistent switching characteristics offer excellent performance. Available with a wide variety of actuators, mounting styles, and switching capabilities.



**Micro Tilt Sensor**  
Replace mercury switches with Omron's surface mounting tilt sensor. Ideal for space-confined installations. Detect tilting over a range of 45 to 75 degrees in right-and-left inclination. Operating temperatures range from -10° to 60° C.

## CONNECTOR



**FPC Connectors**  
The smallest and most reliable fine pitch cable connectors will offer you the design flexibility needed to maximize space and provide secure connections, using Omron's patented Rear Locking Mechanism

