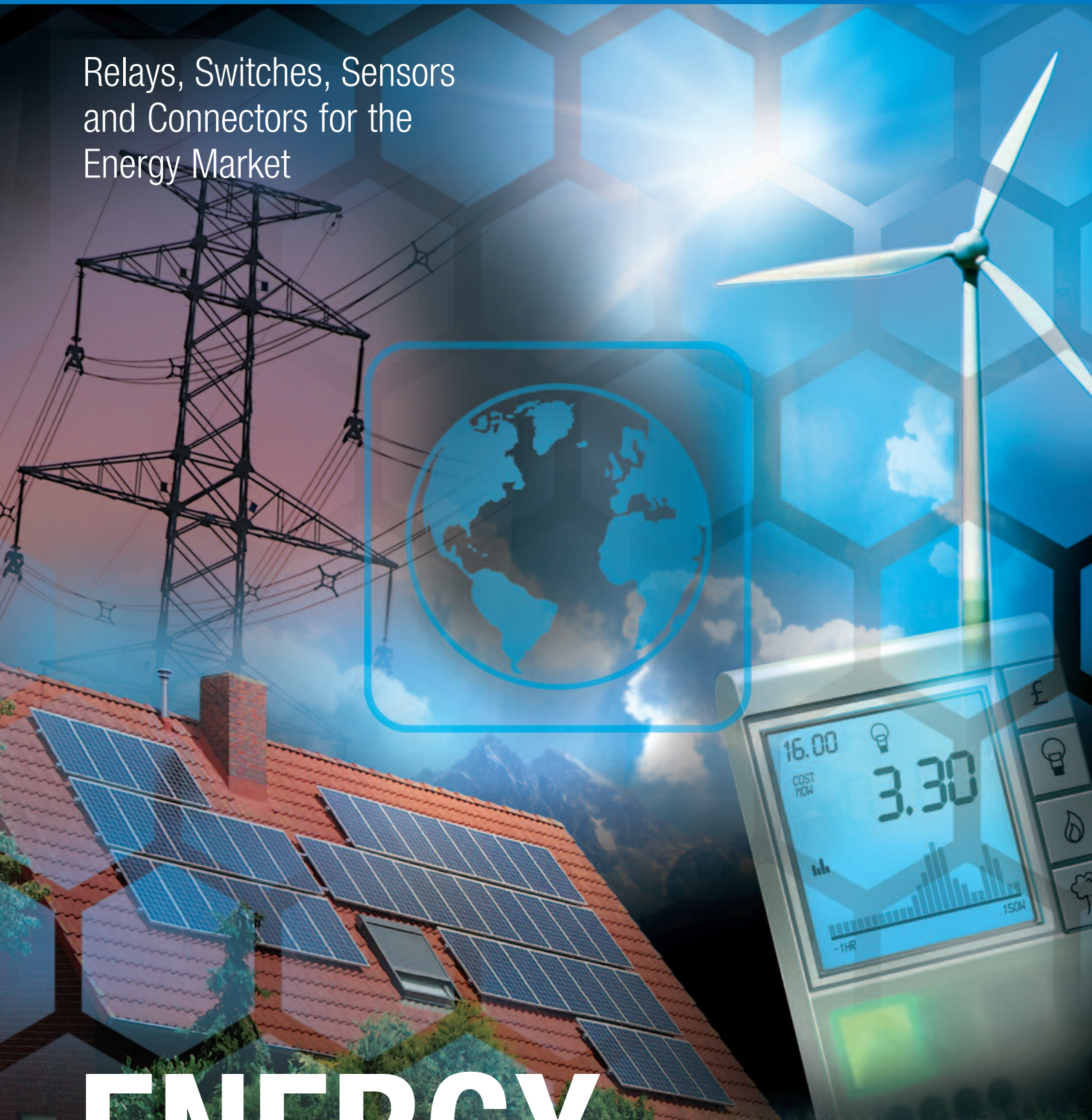


OMRON

Relays, Switches, Sensors
and Connectors for the
Energy Market



ENERGY

Generation, Measurement and Management

www.components.omron.eu

Leading-edge Technology for the Energy Market

Omron Electronic Components Europe B.V. provides a variety of advanced switching, interconnection and sensing component solutions with a proven track record in performance and durability. Whether you're designing for the consumer, mobile power, residential or commercial markets in Solar and Wind power, Metering, or Energy Management, Omron has a solution. With our mix of technology and manufacturing skills, together with a global and local sales support network, we are ready to meet your needs.

Competencies

- Materials
- Precision Replication & Assembly
- Stamping & Moulding
- Integration of Active Elements
- Packaging

Technologies

- Switching
- Sensing
- Micro Lens Arrays
- Magnetic Actuators
- Nano Machining
- Micro Electromechanical Systems
- Solid State Components



Omron designs and manufactures a wide range of high quality, high performance components utilising latest technologies for the Energy Market.

Products include relays, switches, connectors and sensors.



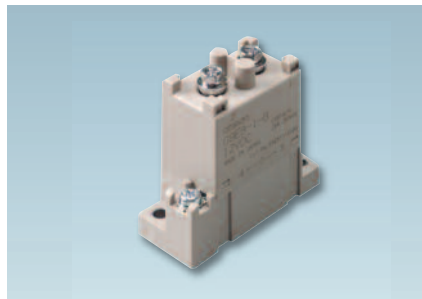
Energy Generation Solar Power



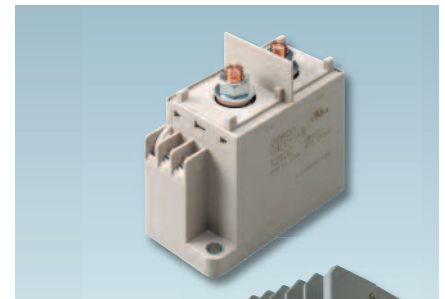
DC Charge Controllers DC Power Relays



G9E-B



G9E-A



G9E-C

Features:

Sealed switching, gas cooled arc, magnetic arc control, safe, reliable design.

- Switching capacities (respectively): 25A at 250 VDC, 60A at 400 VDC, 200A at 400 VDC.

Benefits:

Space saving, no arc space required, quiet – 50% lower operating noise, compact – 70% less volume, power saving – 30% less power consumption than a standard contactor.

Solar Charge Controller

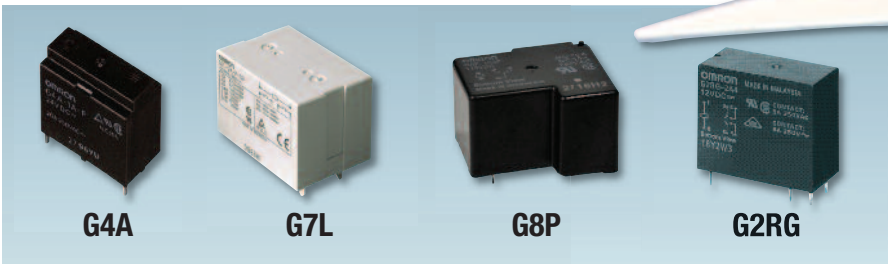


Generation, Measurement and Management



Power PCB Power Relays

(Homes, Small Buildings) 1–10kW



G4A

High capacity, 20 A Relay at 250 VAC 100k cycles. UL, CSA, and VDE approved.

G7L

Panel mount type switches 30A 1FormA and 25A 2FormA Resistive at 220 VAC while PCB type switches 20A.

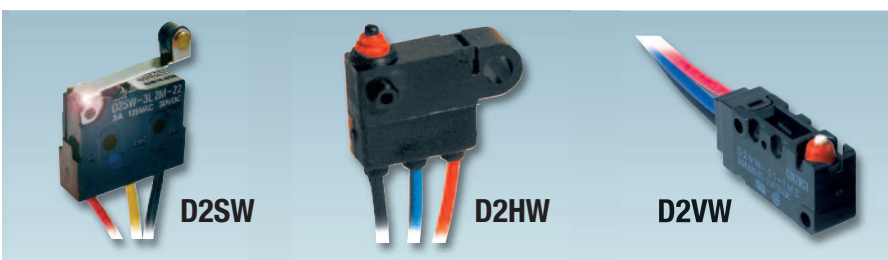
G8P

Power relay, wide operating temperature, PCB or Flange Mount, up to 30A switching capacity.

G2RG

1.5mm clearance between contact terminals of the same polarity. Meets the requirements of European UPS standards.

Sealed Detection Switches



Sealed snap-action switches are available with a variety of ratings, actuators and termination options. These models rated to IP67 and IP50, are suitable for use in wet locations.



PV Inverter

D2SW

Contact ratings of 3A at 125 VAC or 0.1A at 30 VDC.

D2HW

Contact ratings of 0.1A at 125 VAC to 2A at 12 VDC.

D2VW

D2VW Contact ratings of 5A at 250 VAC or 0.1A at 30 VDC.

Wind Power



Industrial PV Inverter General Purpose Relays

30kW – Up



G7J Relay

A High-capacity, high-dielectric-strength, Multi-pole relay used like a contactor, 25A at 220 VAC available in PCB and screw terminals.

G7Z Relay 4A

Multi-pole power relay for contactor. Current range capable of carrying and switching 40 A at 440 VAC.

J7KN Relay

3-4 Pole motor contactors with power range from 4kW to 110kW.

PCB Power Relays



G5RL

Low profile – 15.7mm in height. High inrush and silent model available.

G2RL

High sensitivity (250mW) and high capacity (16A) models available.

G4W

High impulse withstand voltage 10kV with 4kV dielectric strength ideal for power supply switching.

Generation, Measurement and Management

Energy Measurement



G6C

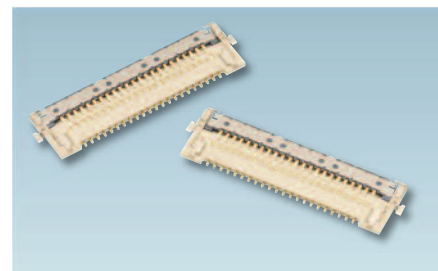
Compact, low power consumption (200mW) relay. Unique moving loop armature reduces relay size, magnetic interference and contact bounce.

G5Q-EU

Compact, high isolation relay.

G6B

Sub-miniature relay that switches up to 5A.



FPC Connectors

Wide range of FPC connectors including the unique Rotary Back-Lock system for reliable connection.

Energy Management



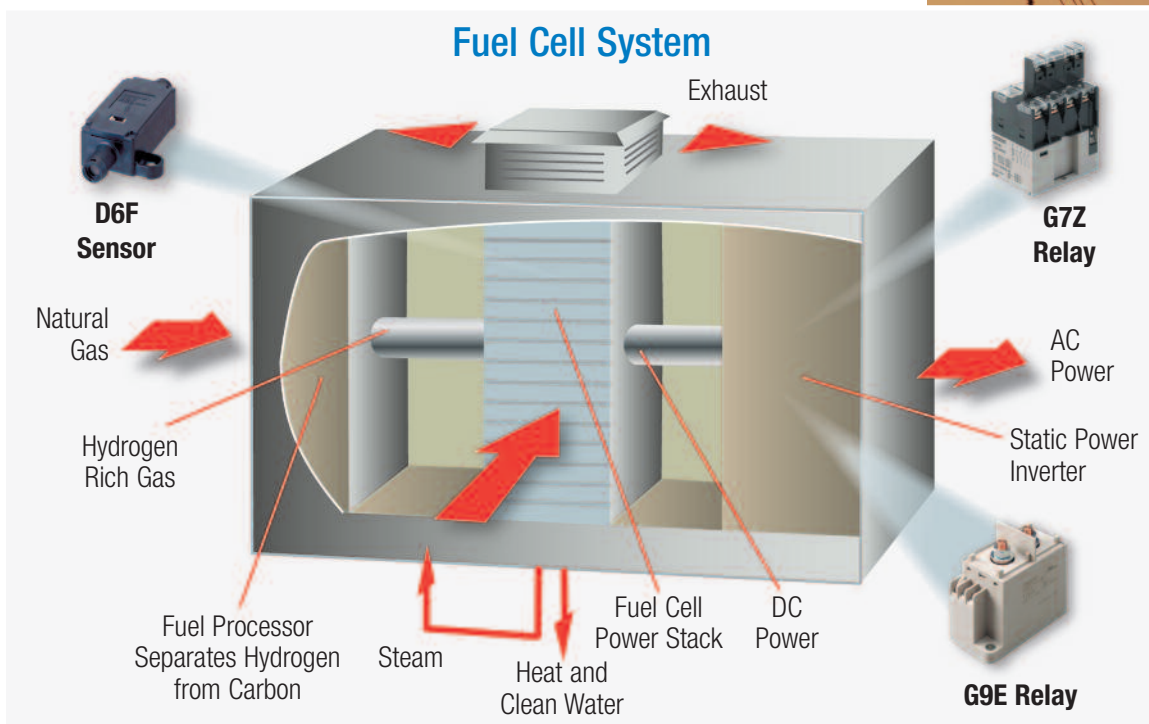
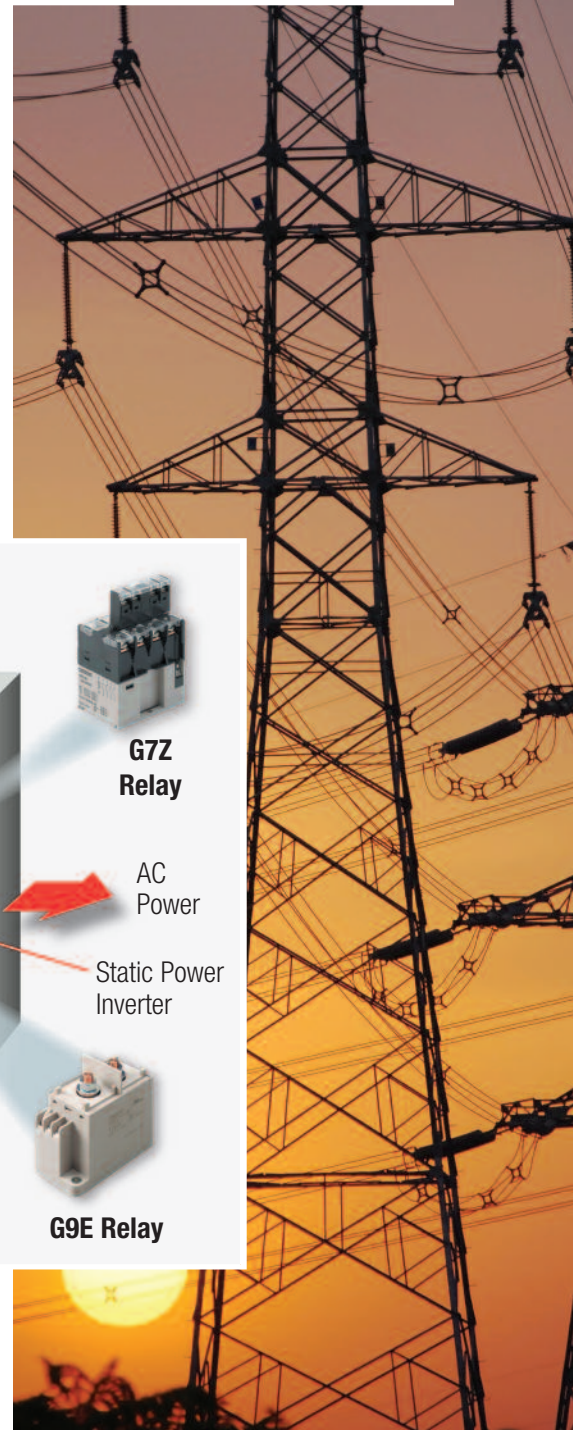
MEMS Flow Sensors

Bypass Style Flow Sensors D6F-P

1 LPM Flow Sensors with integrated DSS (Dust Segregation System), can be used in a bypass setup to measure flow rates over 200 LPM. Great alternative to differential pressure sensors, for better low flow resolution.

In-line Style Flow Sensors D6F-01/02, D6F-05, D6F-10/20/50

Mass Flow Sensors for 1 LPM up to 50 LPM incorporate a series of inlet screens ensuring an even laminar flow across the sensing element.





Head Office

Omron Electronic Components Europe B.V.

Wegalaan 57
2132 JD Hoofddorp
The Netherlands

Tel: +31 23 568 1200
Fax: +31 23 568 1222

Ref. U04E-EN-01

Omron Electronic Components Europe B.V.

Sales Division France
14, rue de Lisbonne
93561 Rosny Sous Bois
France
Tel: +33 1 56 63 19 00
Fax: +33 1 48 55 97 75

Omron Electronic Components Europe B.V.

Sales Division Central Europe
Gruber Strasse 60d
85586 Poing
Germany
Tel: +49 8121 77240
Fax: +49 8121 77244

Omron Electronic Components Europe B.V.

Sales Division Italy
Viale Certosa 49
20149 Milano
Italy
Tel: +39 02 3268 850
Fax: +39 02 3268 851

Omron Electronic Components Europe B.V.

Sales Division Benelux
Wegalaan 57
2132 JD Hoofddorp
The Netherlands
Tel: +31 23 568 1200
Fax: +31 23 568 1212

Omron Electronic Components Europe B.V.

Emerging Markets Operations
CBC 1
Karadžičova 8
821 08 Bratislava
Slovakia
Tel: +421 2582 40950
Fax: +421 2582 40999

Omron Electronic Components Europe B.V.

Sales Division Iberia
Arturo Soria 95
28027 Madrid
Spain
Tel: +34 91 377 7900
Fax: +34 91 377 7987

Omron Electronic Components Europe B.V.

Sales Division Nordic
Box 1275
Norgegatan 1
S-164 32 Kista
Sweden
Tel: +46 8 632 3520
Fax: +46 8 632 3535

Omron Electronic Components Europe B.V.

Sales Division United Kingdom & Ireland
Building A, Campus Six, Caxton Way
Stevenage, Hertfordshire, SG1 2XD
United Kingdom
Tel: +44 870 750 5661
Fax: +44 870 750 5662

www.components.omron.eu