



Switch Selection Guide

everything starts here.

7850 E. Gelding Drive
Scottsdale, AZ 85260

PHONE 480.991.0942

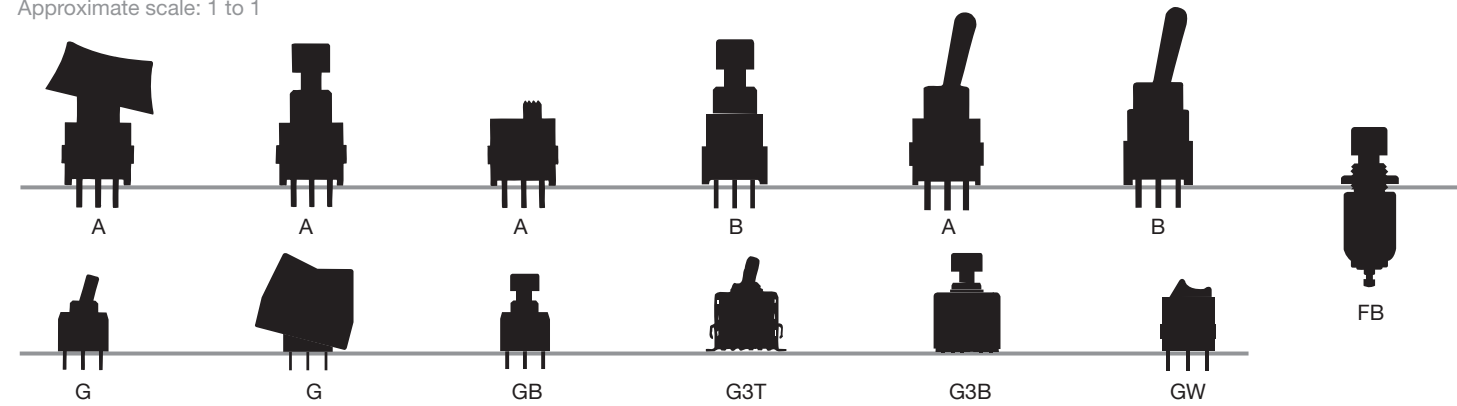
TOLL FREE 877.2BUYNKK

www.nkkswitches.com

Product Overview BY SERIES

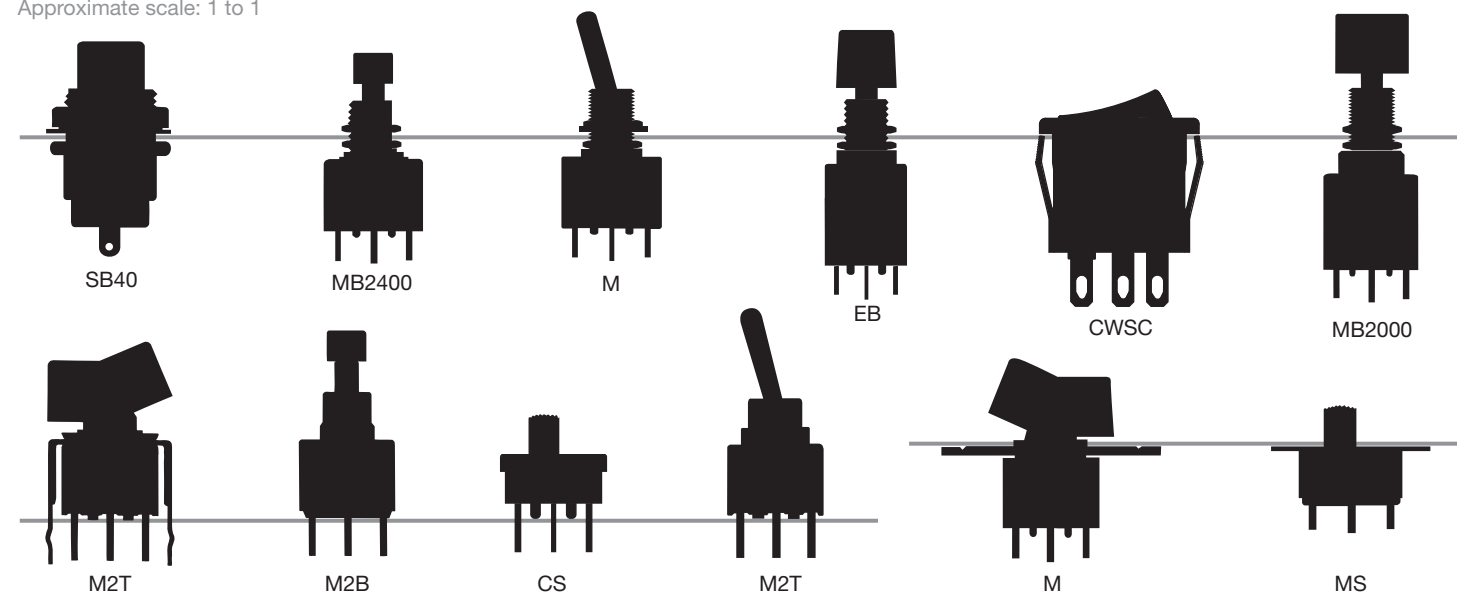
Ultra-Miniature and Subminiature

Approximate scale: 1 to 1



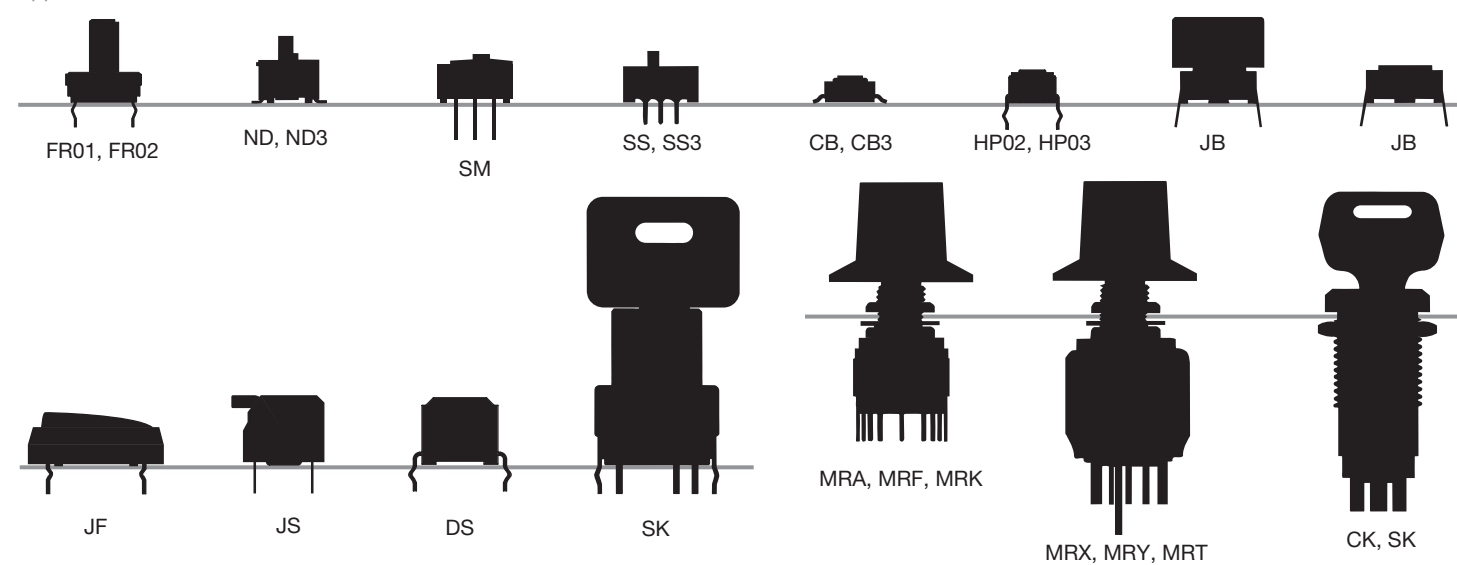
Miniature

Approximate scale: 1 to 1



Specialty

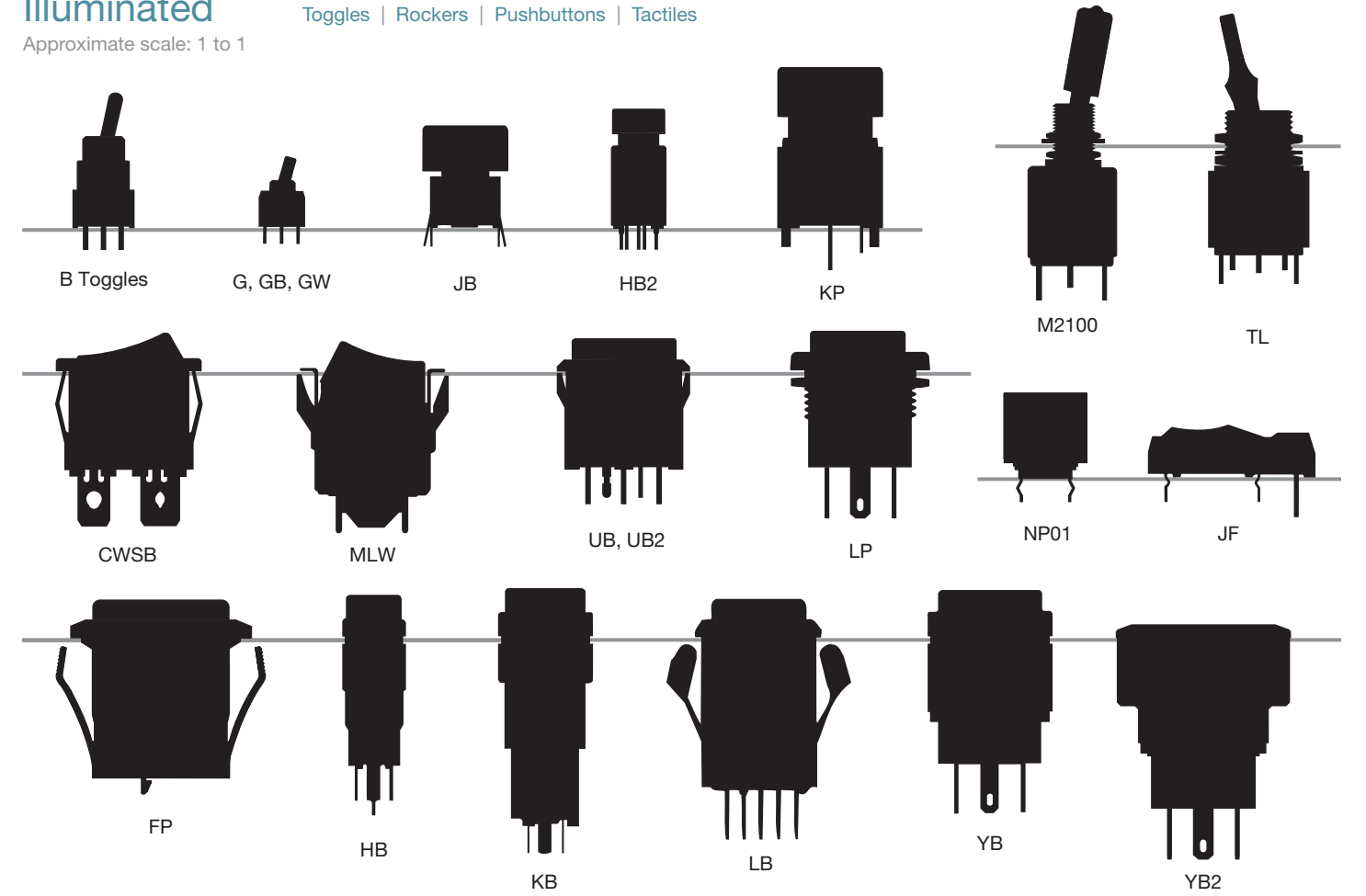
Approximate scale: 1 to 1



Illuminated

Approximate scale: 1 to 1

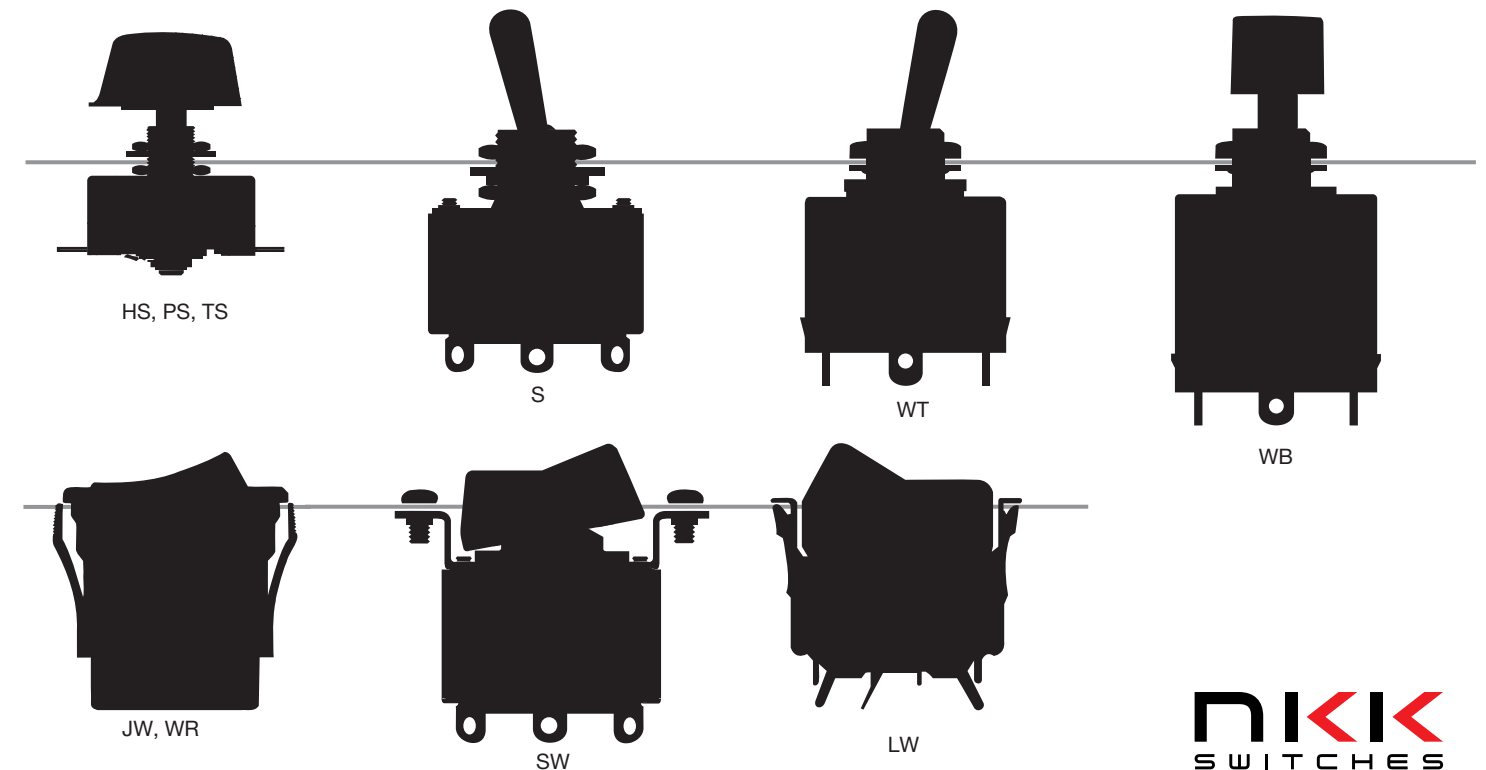
Toggles | Rockers | Pushbuttons | Tactiles



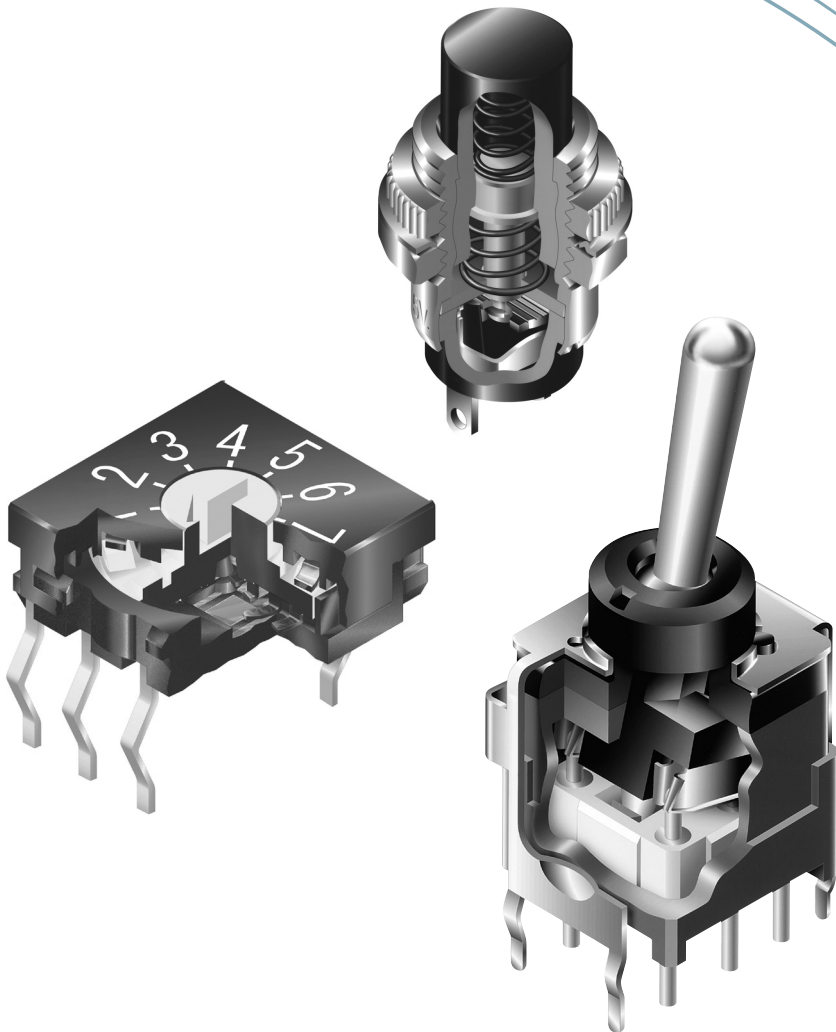
Standard and High Capacity

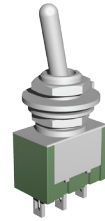
Not to scale

Toggles | Rockers | Pushbuttons | Rotaries



Product Overview





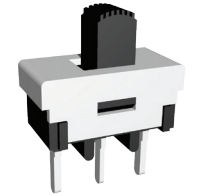
Toggles



Rockers

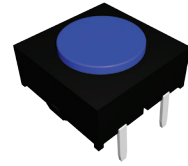


Pushbuttons

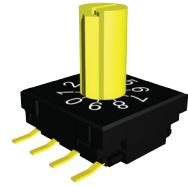


Slides

Rating/Size	Ultra-Miniature	G, G3T: 0.4VA @ 28V AC/DC	G, GW: 0.4VA @ 28V AC/DC	GB, GB2, G3B: 0.4VA @ 28V AC/DC	JS (DIP Slide): 25mA @ 24V DC SM: 500mA @ 12V DC SS: 0.1A @ 30V DC; 0.4VA @ 28V AC/D SS3: 0.4VA @ 28V AC/D
	Subminiature	A, B: 0.4VA @ 28V AC/DC	A: 0.4VA @ 28V AC/DC	AB, BB: 0.4VA @ 28V AC/DC FB: 500mA @ 125V AC; 0.4VA @ 28V AC/DC HB: 0.1A @ 30V AC/DC	AS: 0.4VA @ 28V AC/DC
	Miniature	M, M2100, M2T: 6A @ 125V AC; 0.4VA @ 28V AC/DC TL: 0.4VA @ 28V AC/DC; 6A @ 125V AC	CWS: 6A @ 250V AC; CWSB, CWSC: 9A @ 125V AC CWT: 6A @ 125V AC; JWS: 5 ~ 10A @ 125/250V AC M, M2T: 6A @ 125V AC; 0.4VA @ 28V AC/DC MLW: 5A @ 125V AC M2100: 6A @ 125V AC; 0.4VA @ 28V AC/DC	EB: 3A @ 125V AC; 0.4VA @ 28V AC/DC KB: 1A @ 125/250V AC; 0.4VA @ 28V AC/DC LP01: 3A @ 125/250V AC M2B: 1A @ 125V AC; 0.4VA @ 28V AC/DC MB2000: 6A @ 125V AC; 0.4VA @ 28V AC/DC MB2400, SB4011: 3A @ 125V AC; 0.4VA @ 28V AC/DC NP01: 0.4VA @ 28V AC/DC UB, UB2: 5A @ 125/250V AC; 0.4VA @ 28V AC/DC YB, YB2: 3A @ 125/250V AC; 0.4VA @ 28V AC/DC	CS: 3A @ 125V AC FS: 0.4VA @ 28V AC/DC MS: 6A @ 125V AC; 0.4VA @ 28V AC/DC
	Standard	P, WT: 10A @ 125V AC S: 5~50A @ 125V AC	JWM: 10A @ 125/250V AC; JWL: 16A @ 125/250V AC LW: 10A @ 125V AC; 20A @ 110V AC P: 10A @ 125V AC; SW: 15~30A @ 125V AC WR: 15A @ 125/250V AC	JPM: 10A @ 125/250V AC; JPL: 16A @ 125/250V AC LB: 3A @ 125/250V AC; 0.4VA @ 28V AC/DC SB: 3~15A @ 125V AC; SCB: 15A @ 125/250V AC WB: 6A @ 125V AC	-
	PC Board	A, B, G, G3T, M, M2100, M2T, P	A, CWS, G, GW, M, M2100, M2T	AB, BB, EB, GB, GB2, G3B, KB, LB, M2B, MB2000, MB2400, NP01, UB, UB2	AS, CS, FS, JS, MS, SM, SS, SS3
Mounting	Bushing	M, M2100, P, S, TL, WT	M2100	EB, FB, HB, KB, LB, LP01, MB2000, MB2400, SB, SB4011, SCB, WB, YB, YB2	-
	Snap-In	M2100	CWS, CWSB, CWSC, CWT, JWL, JWM, JWS, LW, M, M2100, MLW, WR	EB, JPM, JPL, KB, LB, LP01, MB2000, MB2400, UB, UB2, YB	-
	Screw	M2100	LW, M2100, SW	-	MS
	Surface Mount	G3T	-	G3B	JS02, JS04, SS3
	Terminals	Solder Lug	M, M2100, P, S, TL, WT	CWS, CWSB, CWSC, CWT, JWL, JWM, JWS, LW, M, M2100, MLW, P, SW, WR	EB, HB, JPM, JPL, KB, LB, LP01, MB2000, MB2400, SB, SB4011, UB, UB2, WB, YB, YB2
PC		A, B, G, M, M2T, M2100, P	A, CWS, G, GW, M, M2100, M2T, P	AB, BB, EB, FB, GB, GB2, KB, LB, M2B, MB2000, MB2400, NP01, UB, UB2, YB	AS, CS, FS, JS01, JS03, MS, SM, SS
SMT Gull Wing		G3T	-	G3B	JS02, JS04, SS3
Quick Connect		M, M2100, P, S	CWS, CWSB, CWSC, JWL, JWM, JWS, M, M2100, P, WR	JPM, JPL, LB, LP01, MB2000, SCB, YB, YB2	-
Wirewrap		M	M	MB2000, MB2400	-
Wire Lead		WT	WR	WB	-
Screw		S, WT	SW, WR	SB, WB	-
Process Sealed	A, B, G, G3T, M2T	A, G, M2T	AB, BB, GB, G3B, M2B	-	
Illuminated	B, G, M2100, TL	CWSB, CWSC, GW, JWS, LW, M2100, MLW	Refer to Illuminated Pushbuttons	MS, SS	
Unique Features	B, TL: IP65 M: IP67 (B3 & D3 Bushings) S: IP67 WT: IP60, IP67 (Wire lead models)	JWLW, JWMW: IP67 WR: IP60, IP67 (Wire lead models) LW: High capacity	LB: IP65 MB2000: IP65 (B3 & D3 Bushings) YB, YB2: IP65 WB: IP60, IP67 (Wire lead models) FB: Turret terminals	Logic level through 6A ratings JS01, JS03: Piano Actuated DIP Slides	



Tactiles



Rotaries



Keylocks



Illuminated Pushbuttons

Rating/Size	Ultra-Miniature	CB, CB3: 50mA @ 24V DC HP02, HP03: 3VA @ 28V DC; 0.4VA @ 28V AC/DC	ND, ND3 (DIP): 100mA @ 5/50V DC	-	GB: 0.4VA @ 28V AC/DC
	Subminiature	JB: 50mA @ 24V DC; 125mA @ 24V DC JF, JL: 50mA @ 24V DC	FR01, FR02 (DIP): 100mA @ 5/50V DC	SK: 0.4VA @ 28V AC/DC	HB: 0.1A @ 30V AC/DC HB2, NP01: 0.4VA @ 28V AC/DC
	Miniature	-	MRA: 250mA @ 125V AC MRB: 0.4VA @ 28V AC/DC MRF, MRK: 0.4VA @ 28V AC/DC MRT22: 10A @ 125V AC; MRT23: 5A @ 125V AC MRX: 2A @ 125V AC; MRY: 3A @ 125V AC; 0.4VA @ 28V AC/DC	SK 12mm Bushing: 3A @ 125V AC 1A @ 250V AC SK PC Mount: 0.4VA @ 28V AC/DC	KB: 1A @ 125/250V AC; 0.4VA @ 28V AC/DC KP: 100mA @ 12V AC LP01: 3A @ 125/250V AC UB, UB2: 5A @ 125/250V AC; 0.4VA @ 28V AC/DC YB, YB2: 3A @ 125/250V AC; 0.4VA @ 28V AC/DC
	Standard	-	HS13: 6A @ 125V AC TS: 6A @ 125/250V AC HS16: 12A @ 125V AC PS: 30A @ 125/250V AC	CK 16mm & 19mm: 3A @ 250V AC	FP01: 5V Photo Interrupter LB: 3A @ 125/250V AC; 0.4VA @ 28V AC/DC
	PC Board	CB, CB3, HP02, HP03, JB, JF, JL	FR01, FR02, MRA, MRB, MRF, MRK, ND, ND3	SK	HB2, KP, NP01, UB, UB2
Mounting	Bushing	-	FR01, HS13, HS16, MRA, MRB, MRK, MRT22, MRT23, MRX, MRY, PS, TS	CK, SK	HB, KB, LB, LP01, YB, YB2
	Snap-In	-	-	-	FP01, KB, LB, LP01, UB, UB2, YB
	Screw	-	-	-	-
	Surface Mount	CB3, HP03	FR02, ND3	-	-
	Solder Lug	-	HS13, HS16, MRT22, MRT23	CK, SK	HB, KB, LB, LP01, UB, UB2, YB, YB2
Terminals	PC	CB, HP02, JB, JF, JL	FR01, MRA, MRB, MRF, MRK, MRX, MRY, ND	SK	HB2, KP, NP01, UB, UB2, YB
	SMT Gull Wing	CB3, HP03	FR02, ND3	-	-
	Quick Connect	-	HS13, HS16	-	LB, LP01, YB, YB2
	Wirewrap	-	-	-	-
	Wire Lead	-	-	-	FP01: See plug options for connection
	Screw	-	PS, TS	-	-
	Process Sealed	CB, CB3, JB, JF	MRA, MRB, MRF, MRK, ND, ND3	SK	-
Illuminated	JB, JF, JL	-	-	All devices are illuminated	
Unique Features	Crimped, insert molded terminals Low profile designs JB: Right angle mount option	Logic level through 30A ratings MRX, MRY: Turret terminals	Indexing 45° or 90° 2, 3, or 5 positions Low, medium and high capacity	LB: IP65 YB, YB2: IP65	

SmartSwitch

OLED AND LCD PROGRAMMABLE SWITCHES

- Smallest off-the-shelf OLED and LCD devices in the industry
- Achieve complex designs with fewer devices and less inventory
- Reconfigure switches and panel functions instantly
- Display industry specific graphics and moving images
- Simplify complex, multi-decision operations
- Wide selection of devices and development tools
- In-house design engineering support

FT Series

RESISTIVE TOUCH SCREENS

- Superior durability and flexibility
- 4 and 5 wire analog
- Digital
- Contact reliability with connector
- ANR film
- Non-glare and hard coated surface

FM Series

MEMBRANES

- Easy integration
- Nonilluminated options: 4 or 16 keys
- Illuminated options: 12 or 16 keys
- Illuminated models feature legends on embossed keypads
- Crisp actuation for positive feedback
- Adhesive backing for easy mounting

DS Series

TILT SWITCHES/SENSORS

- Environmentally friendly
- Replacement for mercury and pendulum switches
- High reliability photo interrupter
- Seal construction for protection from elements
- Switch triggered when tilted beyond +/-30°
- Right angle or straight PC terminals

everything starts here.

7850 E. Gelding Drive
Scottsdale, AZ 85260

PHONE 480.991.0942

TOLL FREE 877.2BUYNKK

www.nkkswitches.com