

Quick Reference Guide

AMPMODU 50/50 Grid Interconnection System

The AMPMODU 50/50 Grid connector family includes a wide variety of high density surface mount, board-to-board and cable-to-board connectors. AMPMODU 50/50 Grid receptacles and header assemblies can be categorized in three groups: board-mount headers, board-mount receptacles and cable-to-board receptacles. AMPMODU 50/50 Grid cable applied receptacles are available in ribbon cable cable termination. The variety of components and application possibilities, combined with small size and outstanding quality, make AMPMODU 50/50 Grid suitable for high density systems.

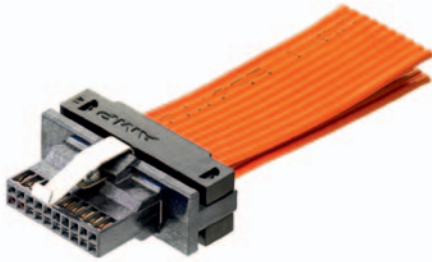
FEATURES AND BENEFITS

- Available in double row, vertical or right angle, shrouded versions
- Formed from high conductivity copper alloy and selectively plated with gold for higher performance and reliability
- Housings on all board-mounted assemblies are made of high temperature tolerant materials and incorporate stand-offs for free drainage of flux cleaning solutions
- Integral latches for positive locking to shrouded mating headers
- Suitable for high density systems
- RoHS compliant parts
(Non-RoHS compliant parts available)

PRODUCT APPLICATIONS

- Robotics
- Aerospace/Defense
- Automotive Controls/Infotainment
- Servers
- Test/Measurement Devices
- Factory Automation
- Telecommunication Equipment
- Storage Equipment
- Appliance

Receptacles - Cable to Board



RECEPTACLES - With Latch		
Part	Part Number	Positions
Double Row	5-104892-1	10
	5-104892-4	40
	6-104892-0	100

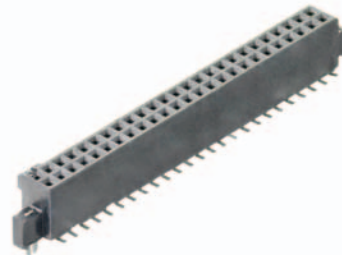
RECEPTACLES - Without Latch		
Part	Part Number	Positions
Double Row	5-104893-2	20
	5-104893-6	60
	5-104892-8	80

Receptacles - Cable to Board



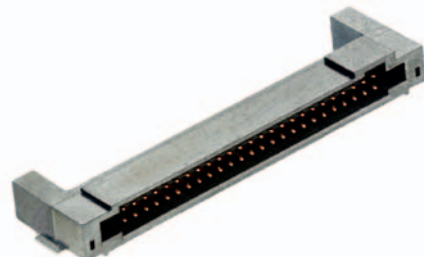
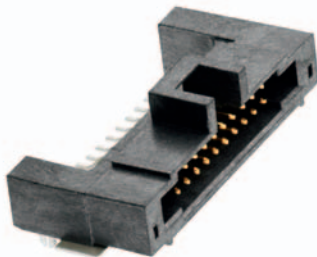
Termination Covers		
Part	Part Number	Positions
Double Row	104891-1	10
	104891-4	40
	1-104891-0	100

Receptacles - Board to Board



RECEPTACLES - Surface Mount Vertical*		
Part	Part Number	Positions
Double Row	5-147384-1	10
	5-147413-2	50
	6-104652-0	100

Headers - Board to Board, Right Angle

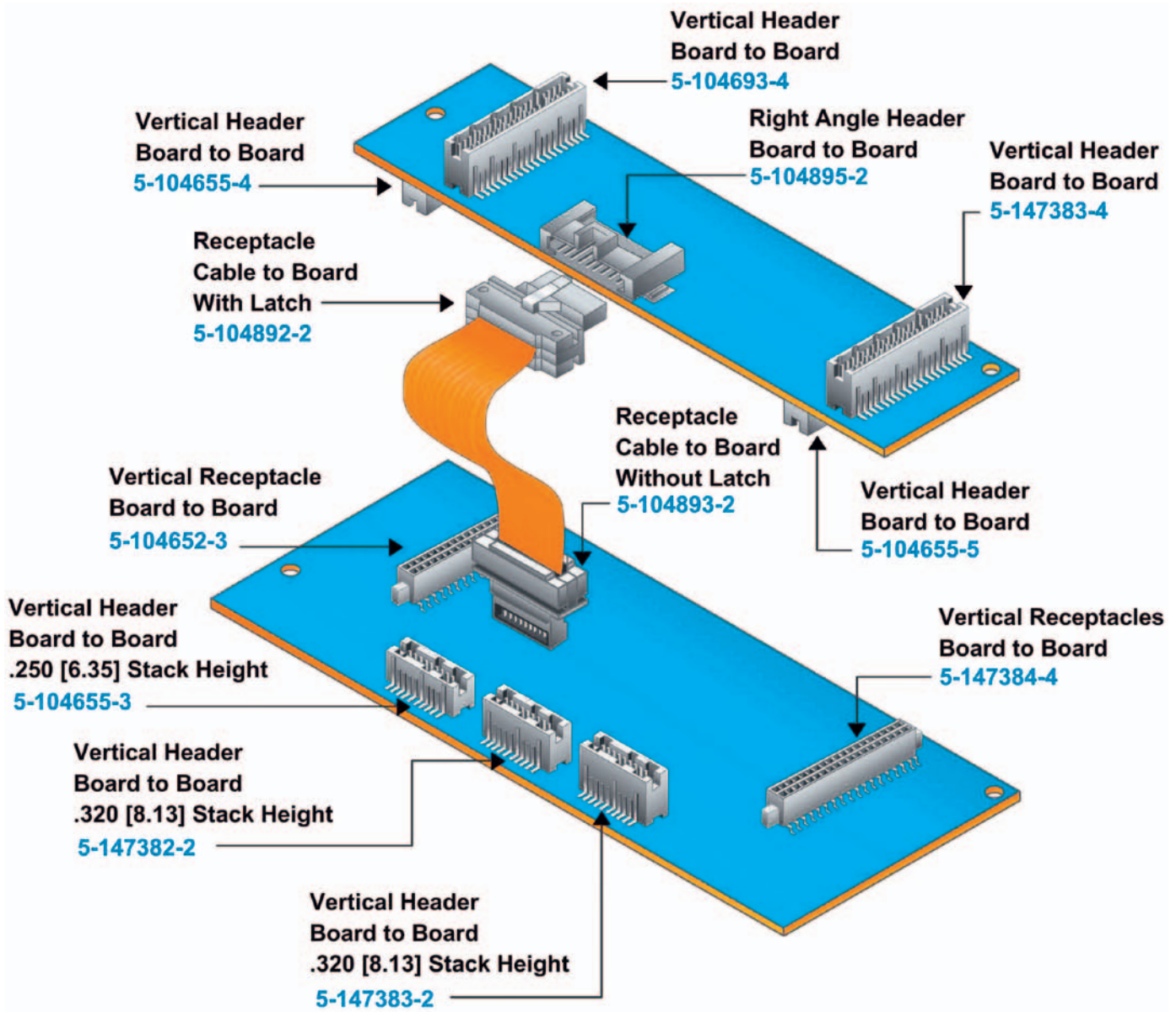


HEADERS - Surface Mount Right Angle with Latch		
Part	Part Number	Positions
Double Row Shrouded	5-104895-1	10
	5-104895-4	40
	6-104895-0	100

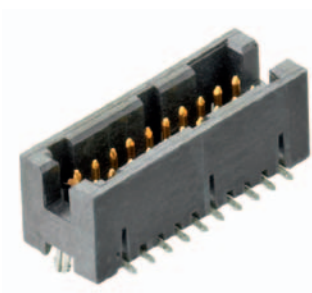
HEADERS - Surface Mount Right Angle without Latch		
Part	Part Number	Positions
Double Row Shrouded	5-104894-3	30
	5-104894-5	50
	5-104894-7	70

* Surface Mount parts are available in tubes or tape and reel packaging

AMPMODU 50/50 Grid



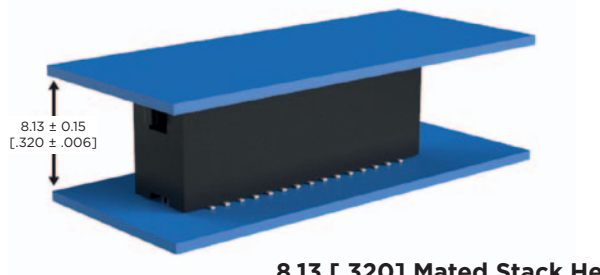
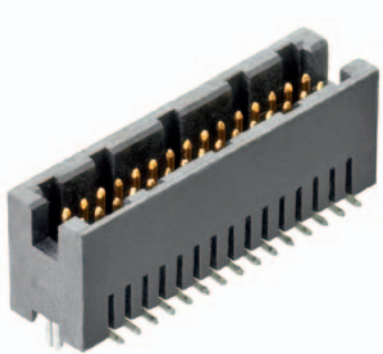
Headers - Board to Board, Vertical



6.35 [.250] Mated Stack Height

HEADERS - Surface Mount Vertical, .250 [6.35] Mated Height

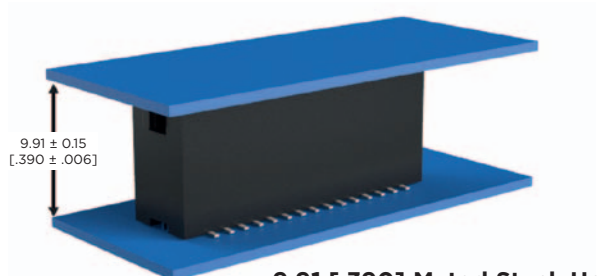
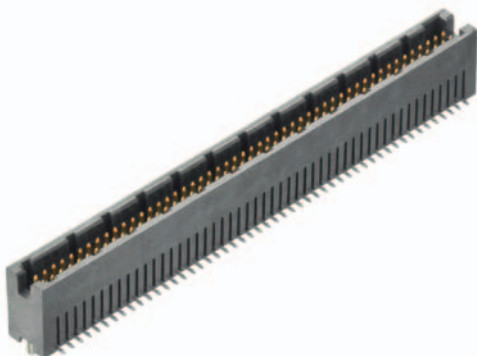
Part	Part Number	Positions
Double Row Shrouded	5-104655-1	10
	5-147381-3	30
	6-104655-1	100



8.13 [.320] Mated Stack Height

HEADERS - Surface Mount Vertical, .320 [8.13] Mated Height

Part	Part Number	Positions
Double Row Shrouded	5-147382-1	10
	5-104656-6	60
	5-147382-9	100



9.91 [.390] Mated Stack Height

HEADERS - Surface Mount Vertical, .390 [9.91] Mated Height

Part	Part Number	Positions
Double Row Shrouded	5-104693-1	10
	5-147383-4	40
	5-147503-1	100

* Surface Mount parts are available in tubes or tape and reel packaging

Performance Specifications

Board-to-Board Connectors, Vertical and Right-Angle

- Mating Force:** 6.4 oz [1.78 N] max, per contact
- Unmating Force:** 1.0 oz [0.28 N] min. per contact
- Durability:** Tested to 200 cycles min.
- Current Rating:** (30°C T rise): .5 ampere per contact
- Operating Temperature Range:** -65°C to +105°C
- Termination Resistance:** 16 milliohms max. (initial)
- Insulation Resistance:** 5000 megohms min. (initial)
- Dielectric Withstanding Voltage:** 300 VAC

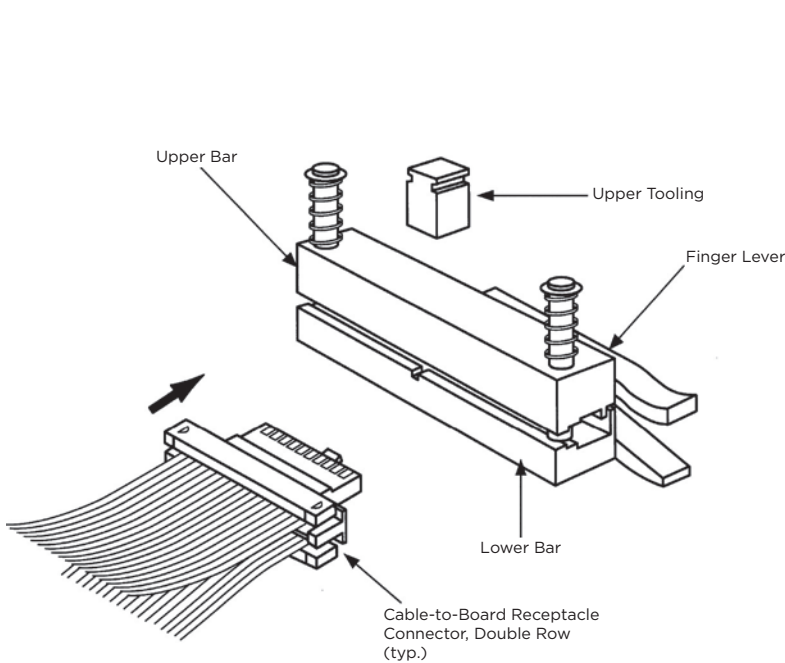
Cable-to-Board Connectors

- Mating Force:** 6.4 oz [1.78 N] max, per contact
- Unmating Force Without Latch:** .5 oz [0.14 N] min. per contact
- Durability:** Tested to 200 cycles min.
- Current Rating:** (10°C T rise): .5 ampere per contact
- Operating Temperature Range:** -65°C to +105°C
- Termination Resistance:** 25 milliohms max. (initial and final)
- Insulation Resistance:** 5000 megohms min. (initial)
- Dielectric Withstanding Voltage:** 300 VAC

Performance Specifications					
Type	Position Size	Soldering Temperature	Current Rating	Application Specification	Product Specification
Vertical Board to Board	10-100	265°C wave	0.5 amps max	114-7010	108-1332
Rt. Angle Board to board & Cable to Board	10-100	265°C reflow	0.5 amps max	114-7010	108-1443

Tooling - Cover Closing Kit 543518-1 used with Manual Miniature Application Frame Assy., 91295-1

Instruction Sheets - 408-9817 & 408-9909



Manual Miniature Application Frame Assembly 91295-1 with Cover Closing Kit 543518-1

Questions that will help you better select the product that you need:

What is the available space?

0.050 Centerline spacing.

What is the Current rating (amp) requirement?

0.5 amp maximum per contact.

What wire type and size requirements are there?

0.050 inch centerline ribbon cable having 30 AWG solid or stranded conductors or 28 AWG stranded conductors, with insulation diameters up to .036 maximum.

What configuration/orientation is required?

Double Row Vertical surface Mount and Right Angle Surface Mount.

What is the number of positions that are required?

10 through 100 positions, double row.

What is the operating temperature requirements?

-65°C to 105°C Range

What are the environmental considerations?

Refer to TE Product Specifications 108-1332 (vertical board to board) and 108-1443 (right angle board to board).

Additional Resources:

<http://www.te.com/products/AMPMODU> – AMPMODU Family Page

<http://www.te.com/products/AMPMODU5050grid> – AMPMODU 50/50 Grid Overview page

FOR MORE INFORMATION

TE Technical Support Center

USA:	+1 (800) 522-6752
Canada:	+1 (905) 475-6222
Mexico	+52 (0) 55-1106-0800
Latin/S. America:	+54 (0) 11-4733-2200
Germany:	+49 (0) 6251-133-1999
UK:	+44 (0) 800-267666
France:	+33 (0) 1-3420-8686
Netherlands:	+31 (0) 73-6246-999
China:	+86 (0) 400-820-6015

Part numbers in this brochure are RoHS Compliant*, unless marked otherwise.

*as defined www.te.com/leadfree

te.com

© 2013 Tyco Electronics Corporation, a TE Connectivity Ltd. Company. All Rights Reserved.

5-1773700-6 CIS WR 03/2013

TE Connectivity and TE connectivity (logo) are trademarks. Other logos, product and/or company names might be trademarks of their respective owners.

While TE has made every reasonable effort to ensure the accuracy of the information in this document, TE does not guarantee that it is error-free, nor does TE make any other representation, warranty or guarantee that the information is accurate, correct, reliable or current. TE reserves the right to make any adjustments to the information contained herein at any time without notice. TE expressly disclaims all implied warranties regarding the information contained herein, including, but not limited to, any implied warranties of merchantability or fitness for a particular purpose. The dimensions in this document are for reference purposes only and are subject to change without notice. Specifications are subject to change without notice. Consult TE for the latest dimensions and design specifications.

