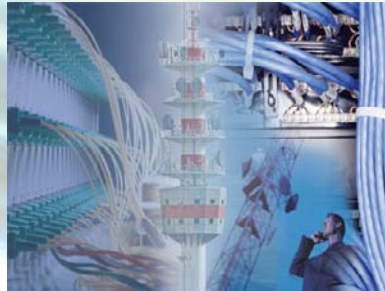


Innovative DC/Telecom Filter Solutions



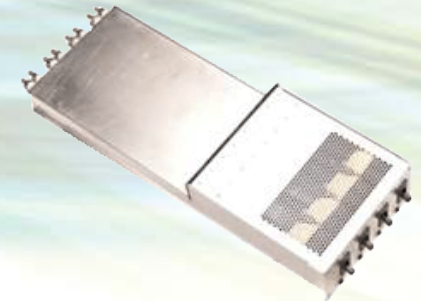
Contents

- Overview of DC/Telecom Filters
- Enclosures
- Mounting Options
- Line-Side Terminals
- Load-Side Connectors
- Bus Bar Connection Interface
- Circuit Breakers
- Accessories



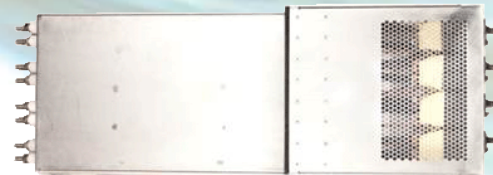
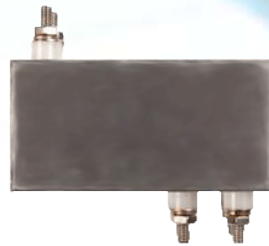
Overview of DC/Telecom Filters

- Available in Current ratings up to 165A or greater
- Designed to operate at standard 80VDC, 55°C ambient
- Compliance to RoHS and REACH environmental initiatives
- High attenuation from 150kHz to 30MHz in Common and Differential Modes
- Multiple (filter) channels available within a single filter enclosure
- Drawer style enclosure allows filter to mount into standard racks
- Design compliance to safety agencies: UL60950, CAN/CSA-C22.2, TUV/VDE EN60950-1



Enclosures

- Filter enclosures are rack-mountable
- Flanges available on front face for mounting
- Gasket available to help maintain electrical seal/grounding
- Enclosures can accommodate single or multi-channel Filters
- Size based on Current rating and performance requirements
- Step-down feature & rails allow enclosure to slide into rack
- Ventilation available to allow proper flow of cooling air

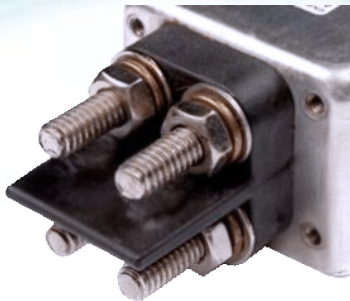


Mounting Options

- Mounting options can range from female Threaded Inserts to Faceplate Flanges with Thru-Holes or Panel Fasteners



Line-Side Terminals



- Screw/Stud Terminals, size based on Current requirements
- Dual Stud pairs accommodate 2-hole Compression Lugs to prevent rotation
- Custom Stud Insulators available and molded in-house
- Barrier provides added protection against electrical shorts



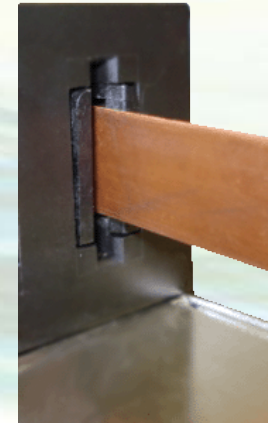
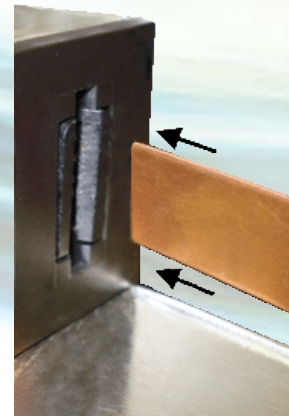
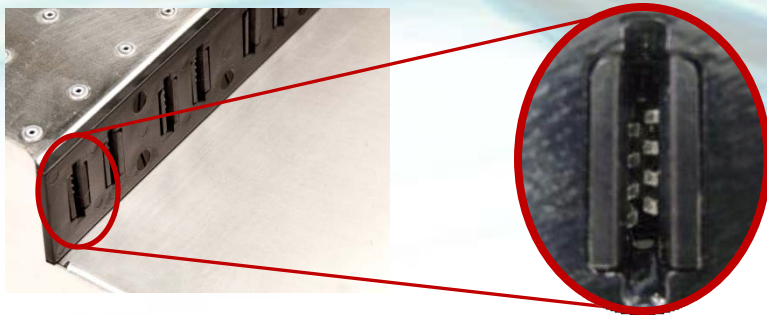
Load-Side Connectors

- Several options for standard Bus Bar Connectors available
- Bus Bar Connectors directly integrated into Filter enclosure
- Connector orientation options available to meet requirements
- Blind-mate feature for Bus Bars allows for easy Filter installation



Bus Bar Connection Interface

- We provide specific configurations for small-space applications where blind-mate connection to bus bars is preferred, such as rack-mounted units.



Circuit Breakers

- Circuit Breaker integration into Filter enclosure ranging from 1- to 3-poles, size based on Current requirement
- Vertical or Horizontal orientation options are available
- Toggle, Rocker, or Flush-Rocker switch options available
- Switch Guard option available to prevent accidental trip



Accessories



- **Lexan Cover**

Provides finger-safe terminations for safety from electrical shock



- **Pull Handle**

Allows for easy installation and extraction of the filter assembly



- **Overlay**

Displays important electrical information, warnings and/or precautions for safety



- **LED**

Indicates Power and Circuit Breaker ON/OFF status (can also indicate reverse polarity)

