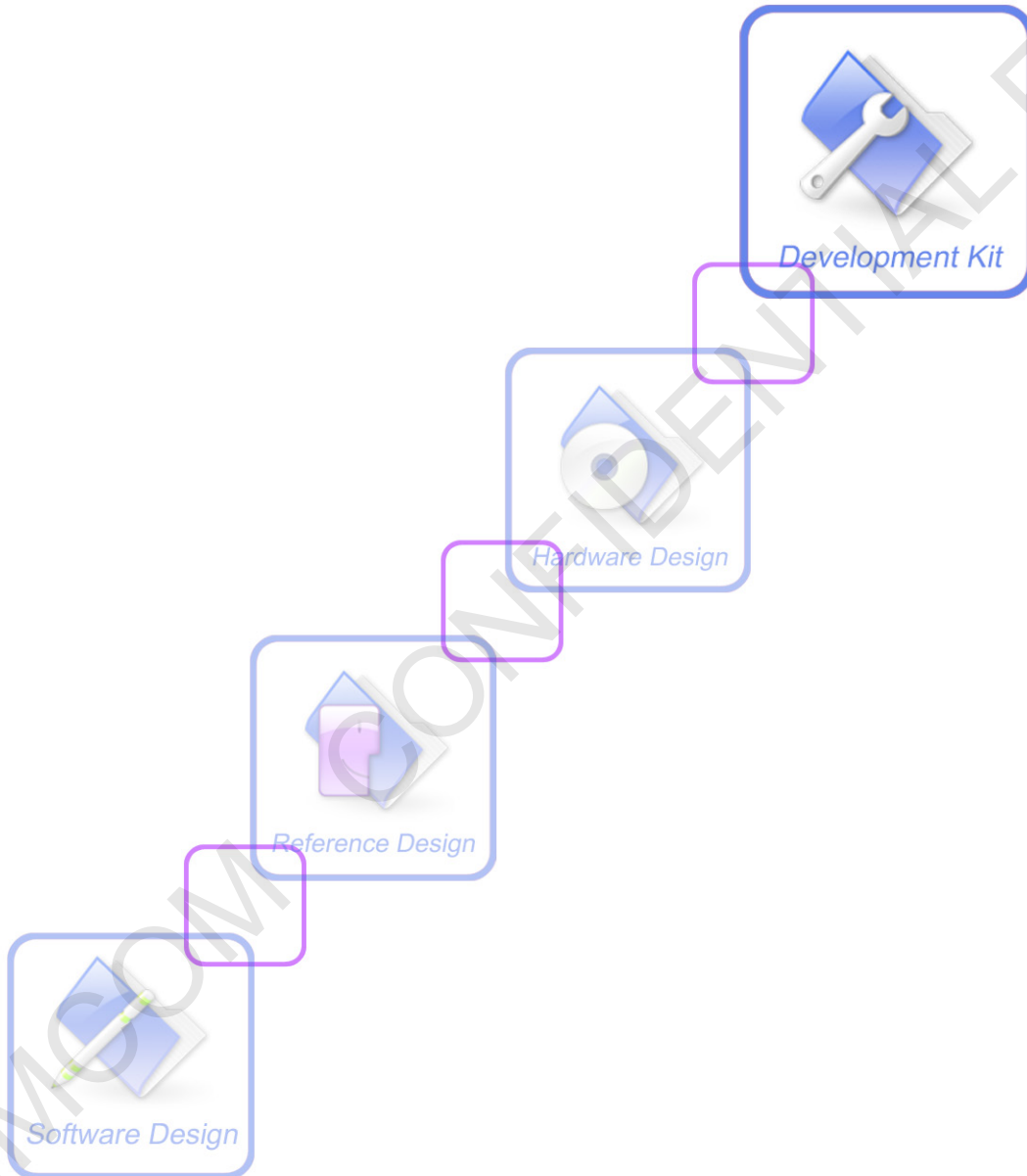




# SIMCOM\_EVB Kit\_User Guide\_V1.01



<b>Document Title:</b>	SIMCOM_EVB Kit_User Guide
<b>Version:</b>	1.01
<b>Date:</b>	2016-08-17
<b>Status:</b>	Release
<b>Document Control ID:</b>	SIMCOM_EVB Kit_User Guide_V1.01

### General Notes

SIMCom offers this information as a service to its customers, to support application and engineering efforts that use the products designed by SIMCom. The information provided is based upon requirements specifically provided to SIMCom by the customers. SIMCom has not undertaken any independent search for additional relevant information, including any information that may be in the customer's possession. Furthermore, system validation of this product designed by SIMCom within a larger electronic system remains the responsibility of the customer or the customer's system integrator. All specifications supplied herein are subject to change.

### Copyright

This document contains proprietary technical information which is the property of SIMCom Limited., copying of this document and giving it to others and the using or communication of the contents thereof, are forbidden without express authority. Offenders are liable to the payment of damages. All rights reserved in the event of grant of a patent or the registration of a utility model or design. All specification supplied herein are subject to change without notice at any time.

*Copyright © Shanghai SIMCom Wireless Solutions Ltd. 2016*

## Contents

Contents.....	3
Version History.....	5
1. SIMCOM-EVB Overview.....	6
2. EVB Accessory.....	8
3. Accessory Interface.....	9
3.1 Power Interface.....	9
3.2 Audio Interface.....	9
3.3 SIM Card Interface.....	9
3.4 USB Interface.....	9
3.5 Power Switch.....	10
3.6 POWER_ON Button.....	10
3.7 RF Switch.....	10
3.8 LED Indicator.....	11
4. Test Interface.....	12
4.1 Test Point A.....	12
4.2 Test Point B.....	13
4.3 Test Point C.....	14
4.4 Test Point D.....	15
4.5 Test Point E.....	16
5. Illustration.....	17
5.1 SIMCom TE installation and uninstallation.....	17
5.2 Power on Module.....	17
5.3 Registering Network and Making a Call.....	18

## Figure Index

FIGURE1: SIMCOM-EVB TOP VIEW .....	6
FIGURE2: SIMCOM-EVB BOTTOM VIEW .....	7
FIGURE 3: EVB ACCESSORY .....	8
FIGURE4: AUDIO INTERFACE.....	9
FIGURE 5: VIRTUALSERIAL PORT .....	10
FIGURE 6: TEST INTERFACE OVERVIEW .....	12
FIGURE 7:TEST POINT A .....	12
FIGURE8: TEST POINT B .....	13
FIGURE9: TEST POINT C .....	14
FIGURE10: TEST POINT D .....	15
FIGURE11: TEST POINT E .....	16
FIGURE12: TE ASSEMBLY .....	17

SIMCOM CONFIDENTIAL FILE

## Version History

Data	Version	Description of change	Author
2016-07-12	1.00	Origin	shijie.yuan
2016-08-17	1.01	<ol style="list-style-type: none"><li>1. Update earphone</li><li>2. Add LED indicator for Status</li></ol>	shijie.yuan

## SCOPE

This document describes how to use SIMCOM-EVB to do test; user can get useful info about the SIMCOM-EVB quickly through this document.

This document is subject to change without notice at any time.

# 1. SIMCOM-EVB Overview

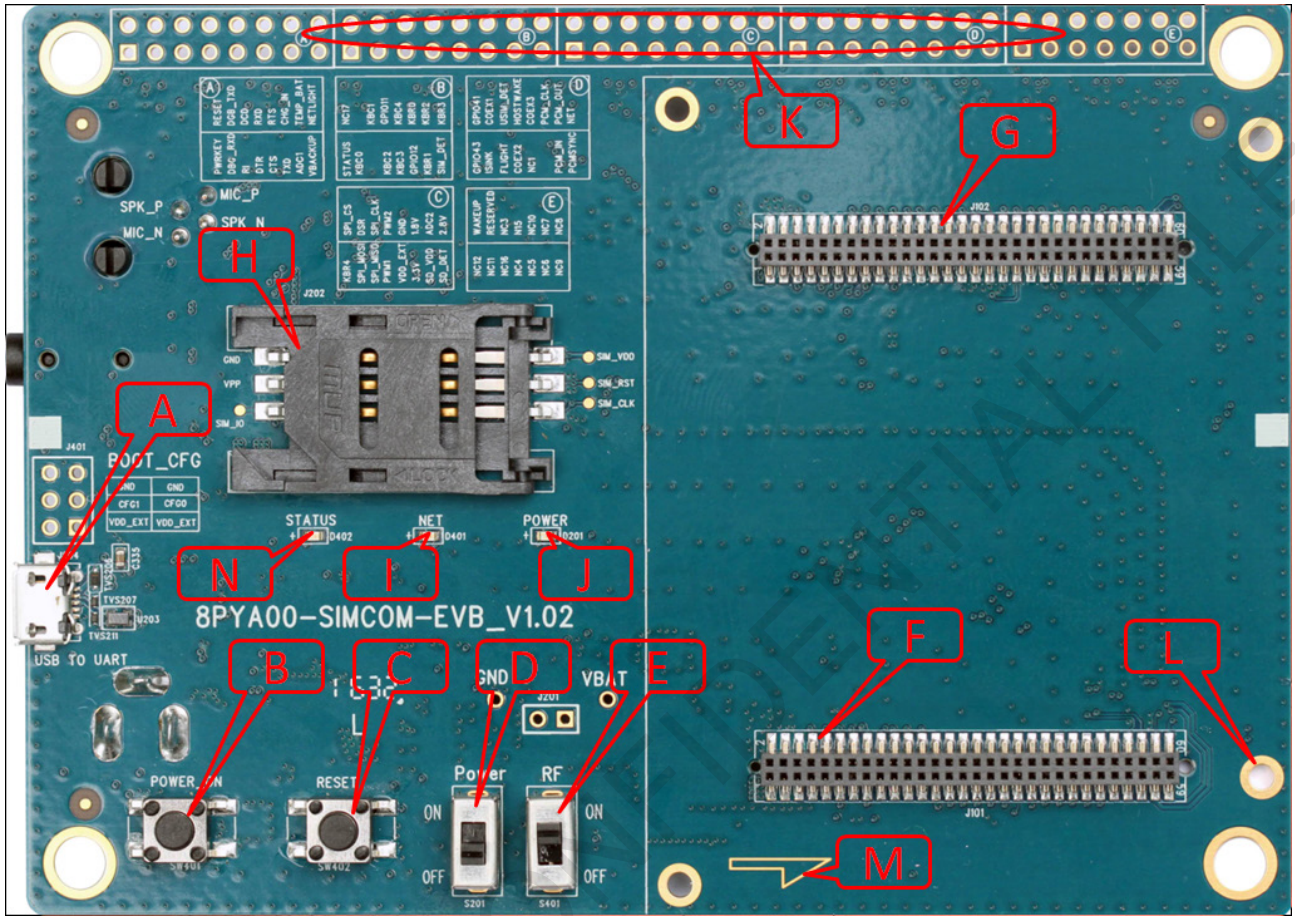


Figure1: SIMCOM-EVB TOP view

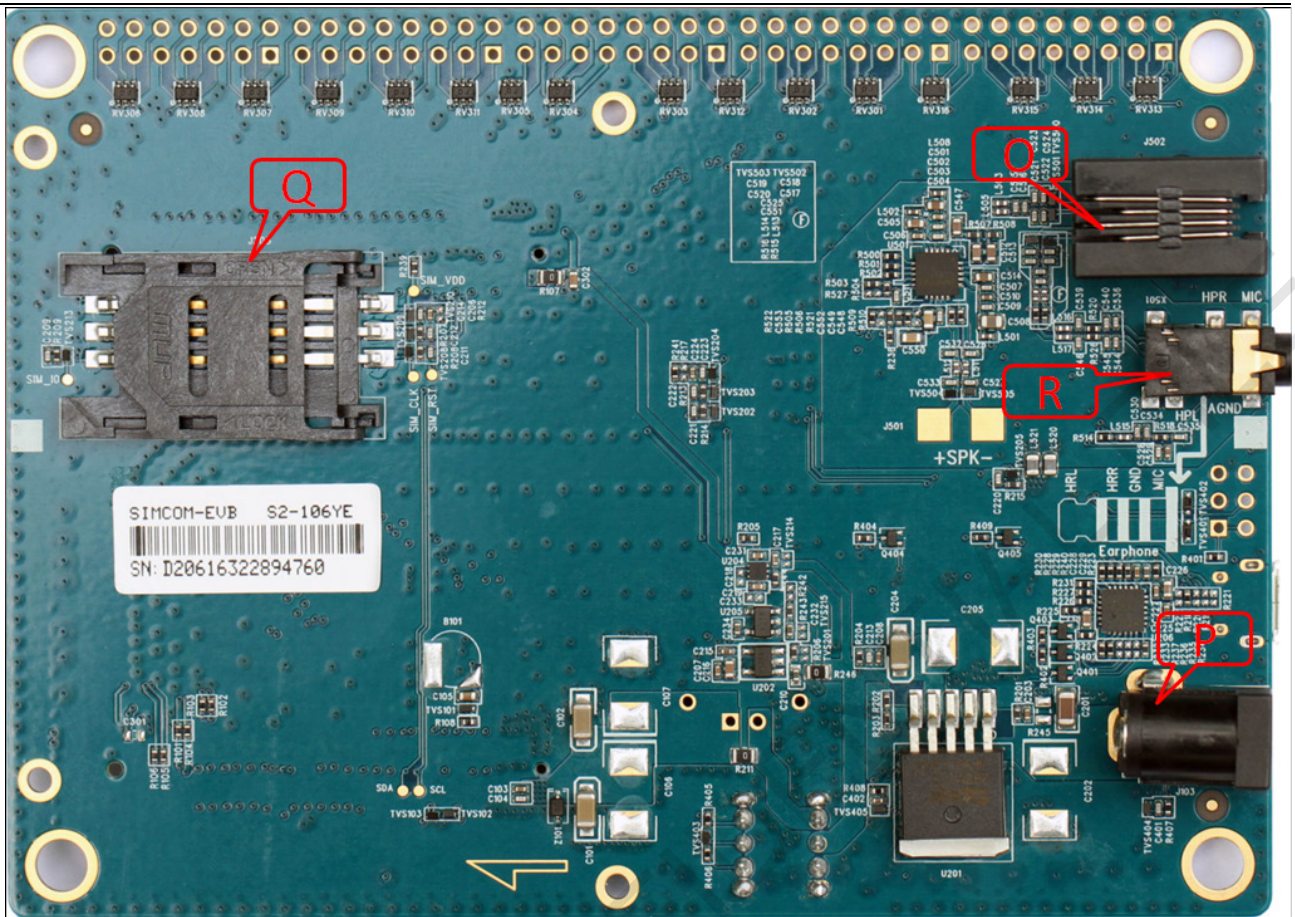


Figure2: SIMCOM-EVB BOTTOM view

- A: USB jack
- B: Powerkey
- C: Reset
- D: Power switch
- E: RF switch
- F: TE connector
- G: TE connector
- H: SIMcard holder 1
- I: LED indicator for Netlight
- J: LED indicator for Power
- K: Test Point
- L: Studs and nuts
- M: mark of TE Module direction
- N: LED indicator for Status
- O: Handset jack
- P: Power jack
- Q: SIMcard holder 2
- R: Earphone jack

## 2. EVB Accessory

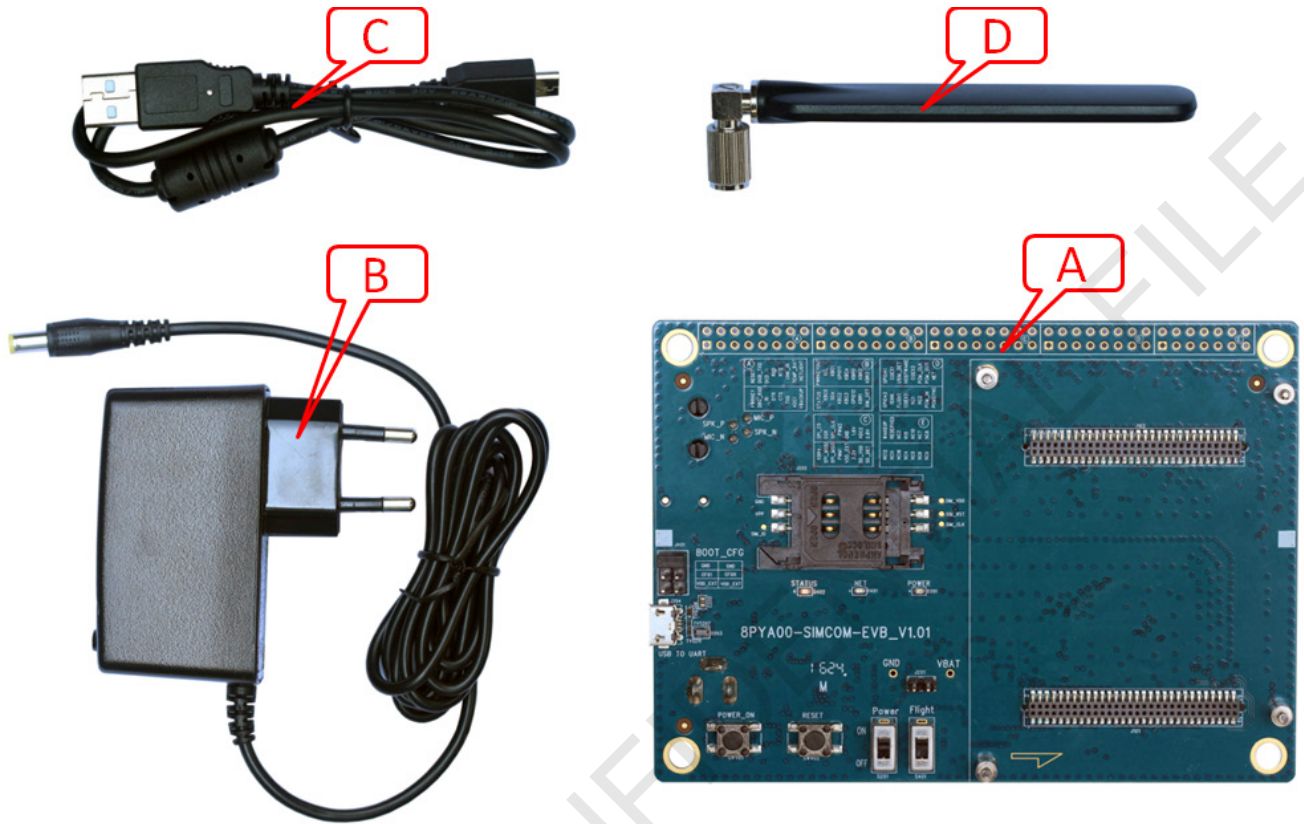


Figure 3: EVB Accessory

- A: SIMCOM-EVB
- B: 5V DC adapter
- C: USB Cable
- D: GSM/WCDMA /LTE antenna



### 3. Accessory Interface

#### 3.1 Power Interface

Pin	Signal	I/O	Description
1	Adapter input	I	5V/2.0A DC source input

#### 3.2 Audio Interface

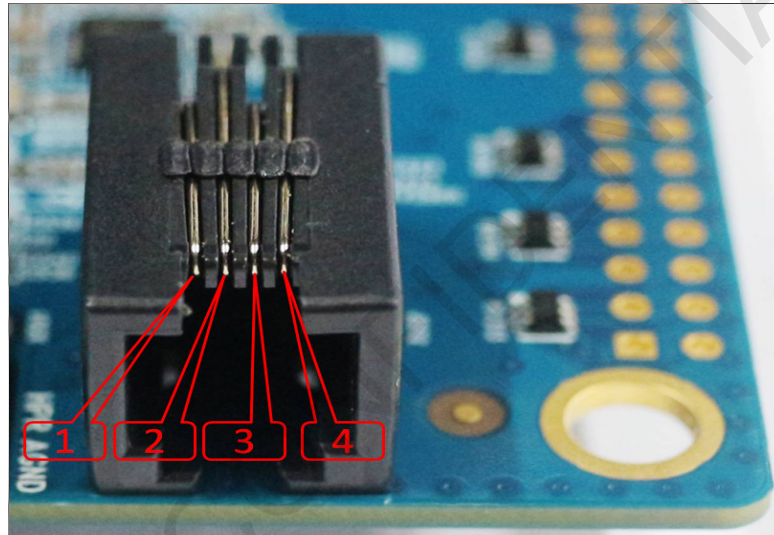


Figure4: Audio Interface

##### Headset interface:

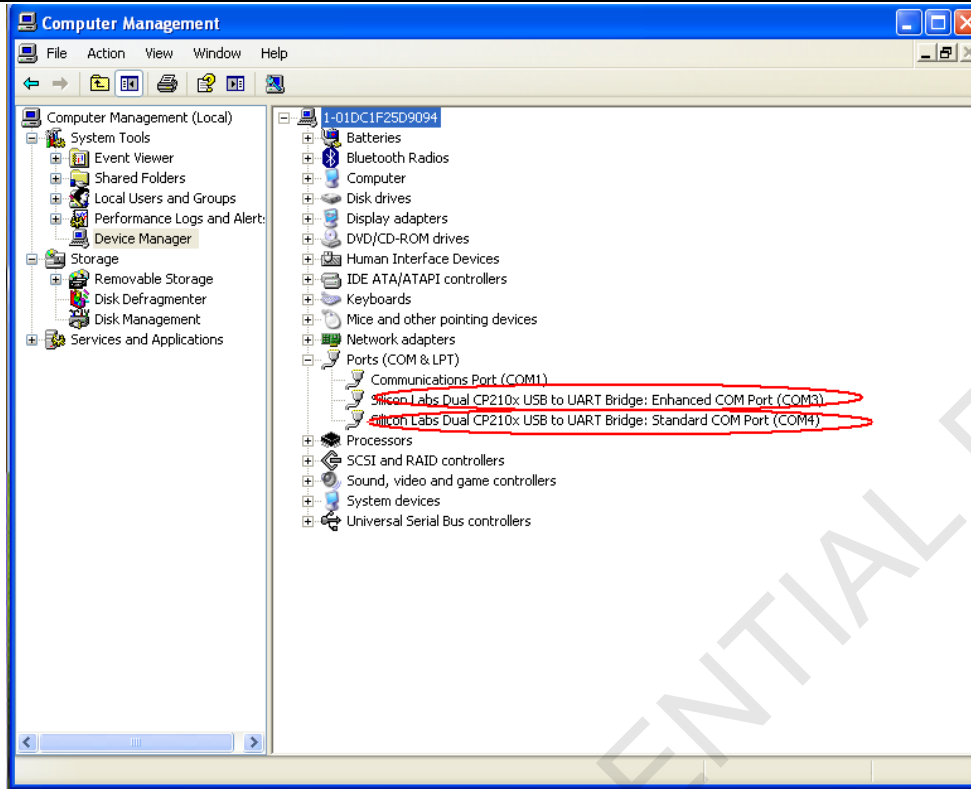
Pin	Signal	I/O	Description
1	MICN	I	Negative microphone input
2	SPKN	O	Negative receiver output
3	SPKP	I	Positive receiver output
4	MICP	O	Positive microphone input

#### 3.3 SIM Card Interface

SIMCard holder 1(J202) is the main holder, SIM2(J203) is for special module which supports dual sim.

#### 3.4 USB Interface

EVB USB interface (A) could be imaged to two virtual ports.



**Figure 5: Virtualserial port**

Enhanced COM port: AT communication

Standard COM port: Debug

CP2105 driver is available here:

<http://www.silabs.com/products/interface/usb-bridges/Pages/usb-bridges.aspx>

### 3.5 Power Switch

After 5V Adapter inserted, switch S201 on, then power LED (D201) will be solid on.

### 3.6 POWER\_ON Button

After give power to EVB, press the POWER\_ON button for more than 1.5 seconds, the module will be turned on, the network LED light (D401) will blink.

### 3.7 RF Switch

RF switch (S401) could control module RF on or off. That's hardware control of flight mode. When RF on, flight mode is off, when RF switch off, flight mode is on.

### 3.8 LED Indicator

LED light work's behaviour as below.

Name	Description	STATUS
D201	Power ON/OFF indicator	Bright: EVB Power ON; Extinct: EVB Power OFF
D401	NET status indicator	Blinking at a certain frequency according various net status
D402	Module status indicator	Bright: Module runs normally Extinct: System is powered down

SIMCOM CONFIDENTIAL FILE

## 4. Test Interface

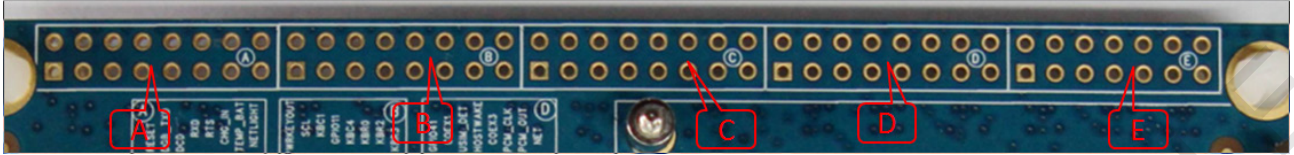


Figure 6: Test interface overview

### 4.1 Test Point A

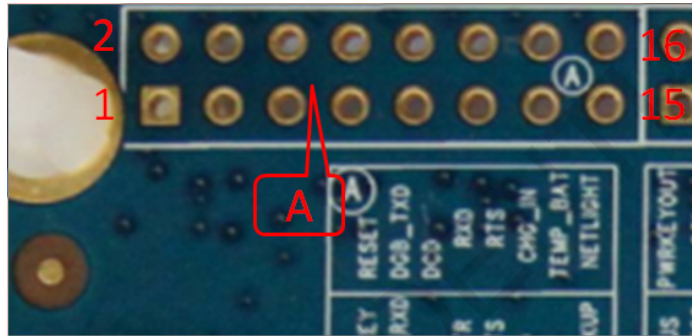


Figure 7: Test Point A

Test point A Pin description:

Pin	Signal	I/O	Description
1	PWRKEY	I	Power on key
2	RESET	I	Reset key
3	DBG_RXD	I	Receive data
4	DBG_TXD	O	Transmit data
5	RI	O	Ring Indicator
6	DCD	O	Data carrier detection
7	DTR	I	Data Terminal Ready
8	RXD	I	Receive data
9	CTS	O	Clear to Send
10	RTX	I	Request to Send
11	TXD	O	Transmit data
12	CHG_IN	I	Charge in detect
13	ADC1	I	ADC input
14	TEMP_BAT	I	Temperature detect
15	VBACKUP	P	Battery for RTC
16	NETLIGHT	O	LED indicator for NET Light

## 4.2 Test Point B

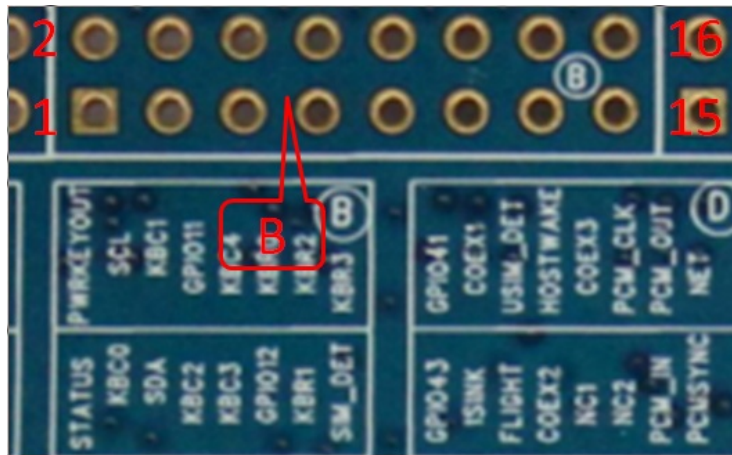
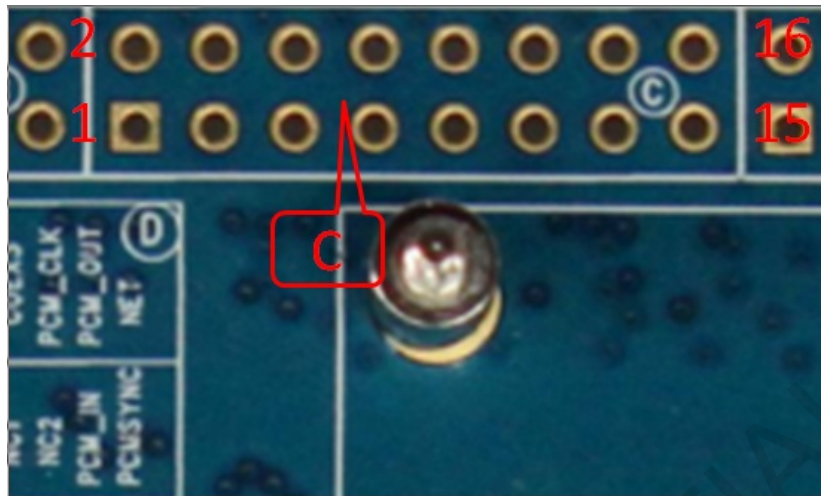


Figure8: Test Point B

### Test point B Pin description:

Pin	Signal	I/O	Description
1	STATUS	O	Module working on indicate
2	NC17		
3	KBC0	I	KEYPAD input
4			
5			
6	KBC1	I	KEYPAD input
7	KBC2	I	KEYPAD input
8	GPIO11	I/O	GPIO
9	KBC3	I	KEYPAD input
10	KBC4	I	KEYPAD input
11	GPIO12	I/O	GPIO
12	KBR0	I	KEYPAD input
13	KBR1	I	KEYPAD input
14	KBR2	I	KEYPAD input
15	SIM1_DET	I	SIM detect
16	KBR3	I	KEYPAD input

### 4.3 Test Point C



**Figure9: Test Point C**

**Test point C Pin description:**

Pin	Signal	I/O	Description
1	KBR4	I	KEYPAD input
2	SPI_CS	O	SPI Chip Select
3	SPI_MOSI	O	SPI Data output
4	DSR	O	Data Set Ready
5	SPI_MISO	I	SPI Data input
6	SPI_CLK	O	SPI Clock output
7	PWM1	O	PWM output
8	PWM2	O	PWM output
9	VDD_EXT	P	Power output from Module
10	GND	P	GND
11	3V3	P	3.3V Power
12	1V8	P	1.8V Power
13	SD_VDD	P	Power for SD Card
14	ADC2	I	ADC input
15	SD_DET	I	SD detect
16	2.8V	P	3.3V

#### 4.4 Test Point D

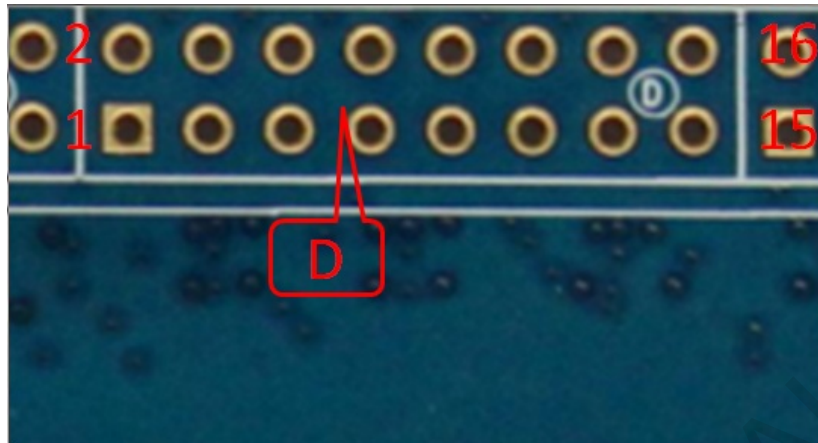


Figure10: Test Point D

##### Test point D Pin description:

Pin	Signal	I/O	Description
1	GPIO43	I/O	GPIO
2	GPIO41	I/O	GPIO
3	ISINK	AI	Ground-referenced current sink.
4	COEX1	O	RF synchronizing between Wi-Fi and LTE
5	F LIGHT	O	Flight mode
6	SIM2_DET	I	SIM detect
7	COEX2	O	RF synchronizing between Wi-Fi and LTE
8	HOST_WAKE	O	HOST WAKEUP
9	NC1		
10	COEX3	O	RF synchronizing between Wi-Fi and LTE
11			
12	PCM_CLK	O	PCM data bit clock
13	PCM_IN	I	PCM data input
14	PCM_OUT	O	PCM data output
15	PCM_SYNC	O	PCM data frame sync signal
16	NET_STATUS	O	NET status

### 4.5 Test Point E

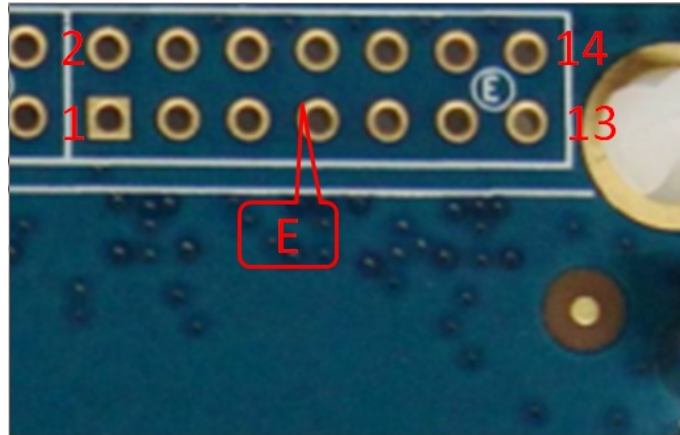


Figure11: Test Point E

**Test Point E Pin description:**

Pin	Signal	I/O	Description
1	NC12		
2	WAKEUP_IN	I	WAKEUP input
3	NC11		
4	RESERVED		
5	NC16		
6	NC3		
7	NC4		
8	NC15		
9	NC5		
10	NC10		
11	NC6		
12	NC7		
13	NC9		
14	NC8		

Note: please refer to specified TE schematic for test point if there has difference.



## 5. Illustration

### 5.1 SIMCom TE installation and uninstallation

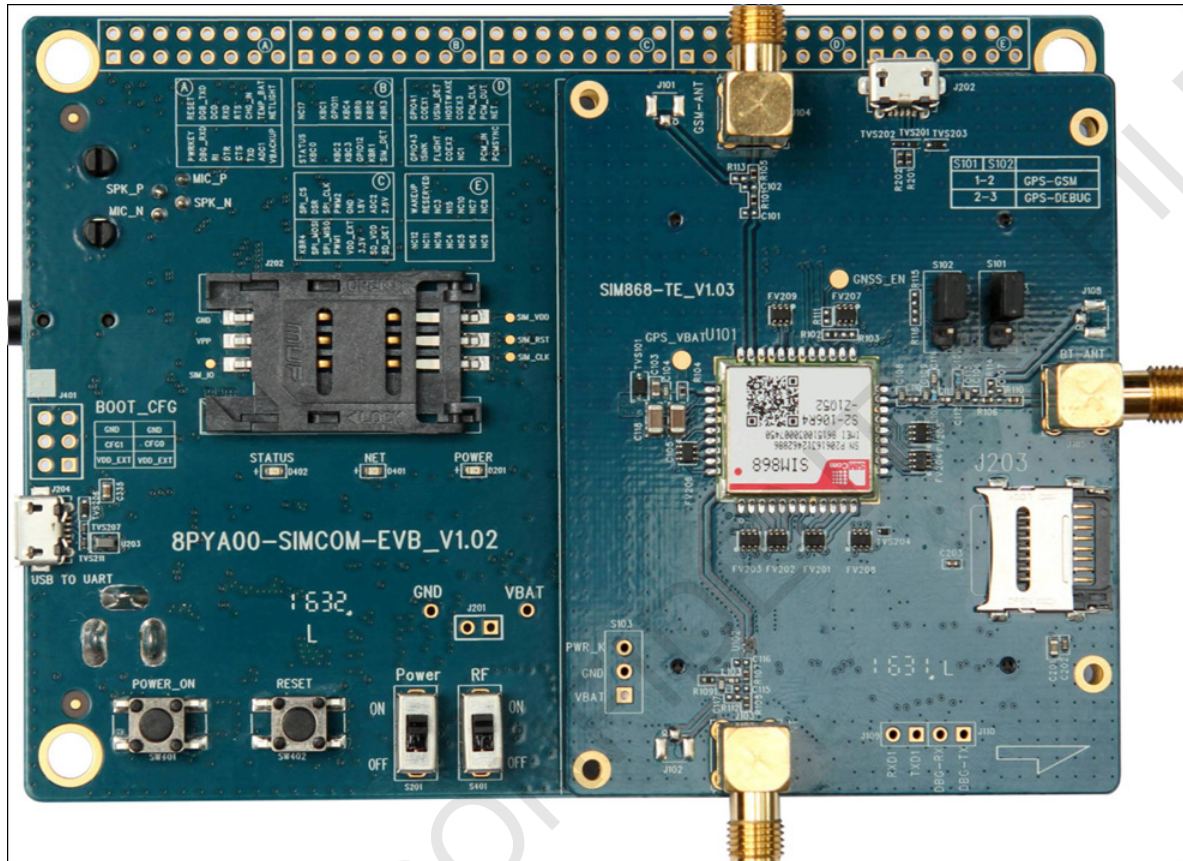


Figure12: TE assembly

#### Install TE board:

- 1) there have four studs on board near connectors. It's easy to put TE in correct position without making mistake.
- 2) take care of TE SMA connector direction;
- 3) take care of the mark for TE direction on EVB board.

#### Uninstall and replace TE board:

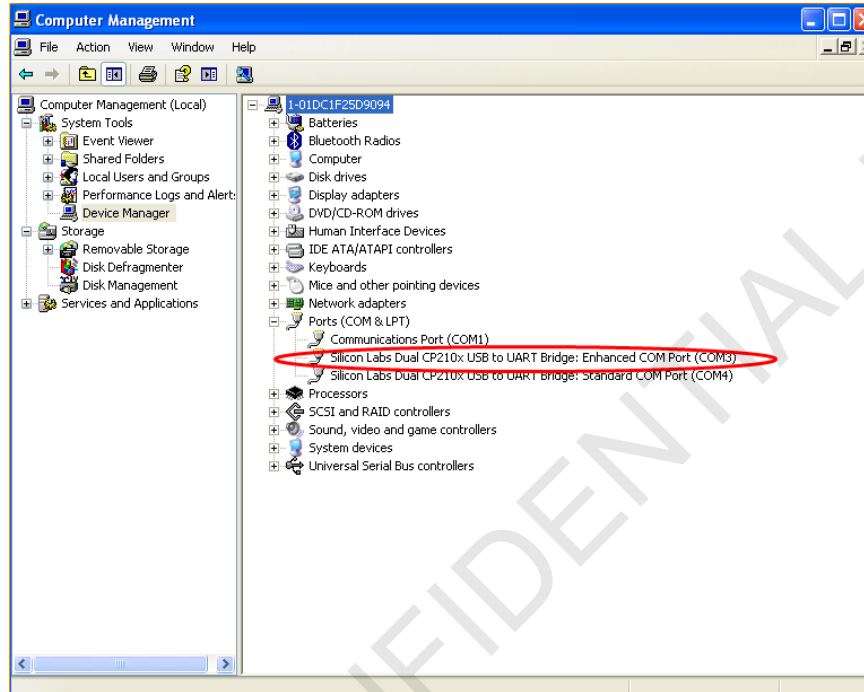
- 1) it's a little hard to remove TE board from EVB connector, because they are connected closely.
- 2) Take care with power to remove from SMA connector side slowly.

#### 5.2 Power on Module:

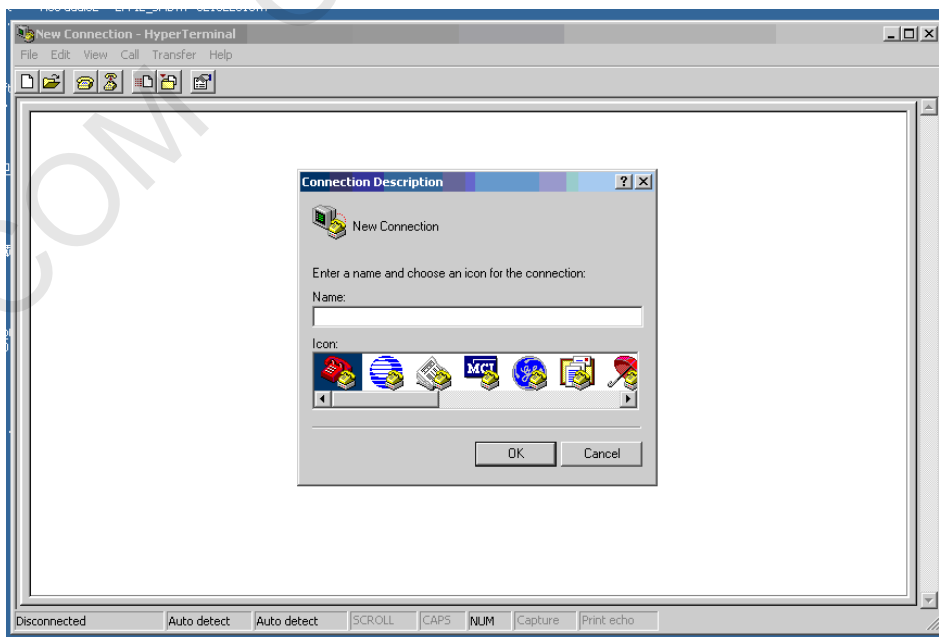
- 1) Connect the SIMCOM-TE to the 2x60pins connector on EVB, plug in 5V DC adapter, switch S201 to "ON" state; keep S401 to "ON" position.
- 2) Press the POWER\_ON button for more than 1.5 second and then release, SIMCOM module power on. After the module is on, the LED light D402 will be bright, and the LED light D401 will blink at a certain frequency. Through the state of LED, you can judge registering status of the module. For detailed description, please refer to SIMCOM HD document.

### 5.3 Registering Network and Making a Call

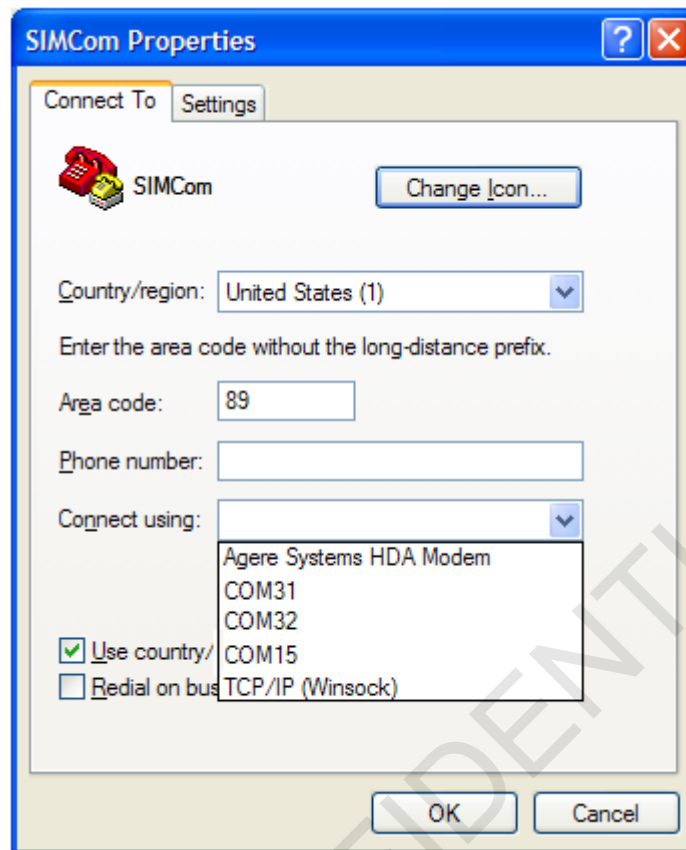
- 1) Install antenna to TE board, insert SIM card.
- 2) Connect the USB cable to the USB jack; launch the Hyper Terminal in computer.
- 3) Check the serial port number from Device Manager list.



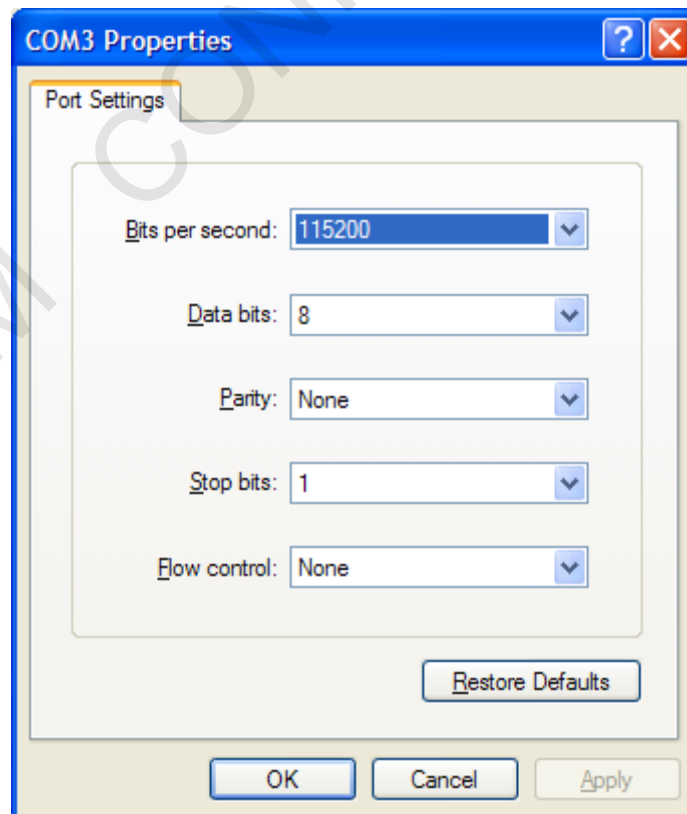
- 4) Use the Hyper Terminal to make a call from module as following:
  - a) Launch hyper terminal



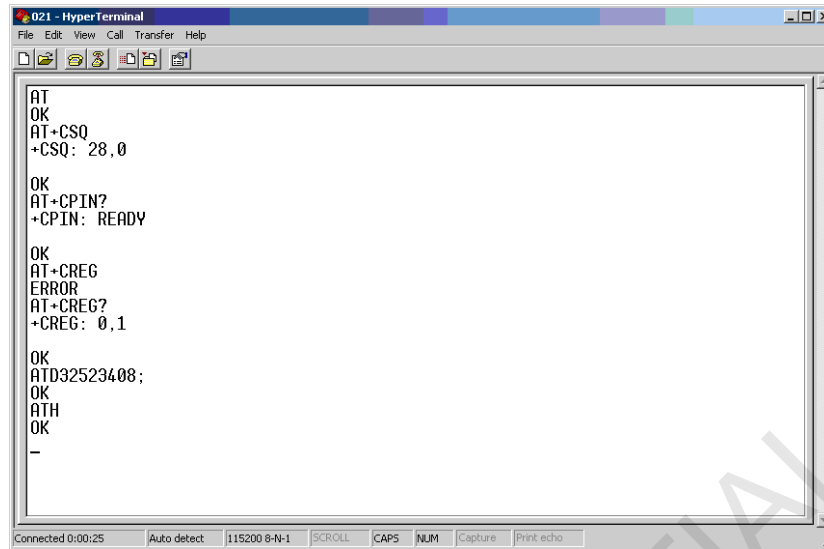
- b) configure right com port



c) configure baudrate



d) Lastly connect the module and make a call.



```
021 - HyperTerminal
File Edit View Call Transfer Help
[Icons]
AT
OK
AT+CSQ
+CSQ: 28,0
OK
AT+CPIN?
+CPIN: READY
OK
AT+CREG
ERROR
AT+CREG?
+CREG: 0,1
OK
ATD32523408;
OK
ATH
OK
-
```

Connected 0:00:25 Auto detect 115200 8-N-1 SCROLL CAPS NUM Capture Print echo

SIMCOM CONFIDENTIAL FILE

## Contact us

### Shanghai SIMCom Wireless Solutions Ltd.

Address: Building A, SIM Technology Building, No.633, Jinzhong Road, Changning District, Shanghai 200335

Tel: 86-21-32523300

Fax: 86-21-32523020

Email: [simcom@sim.com](mailto:simcom@sim.com)

Website: [www.simcomm2m.com](http://www.simcomm2m.com)

SIMCOM CONFIDENTIAL FILE