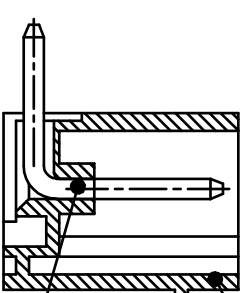
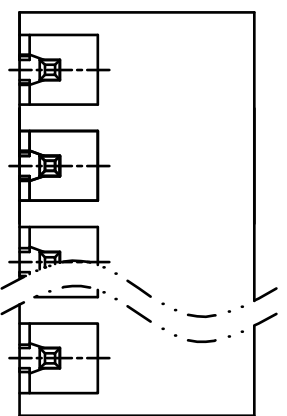
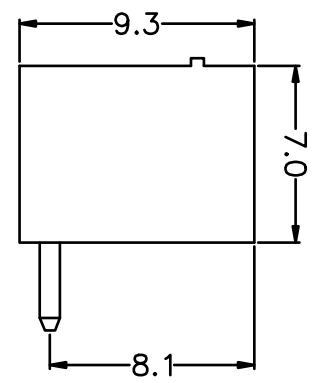
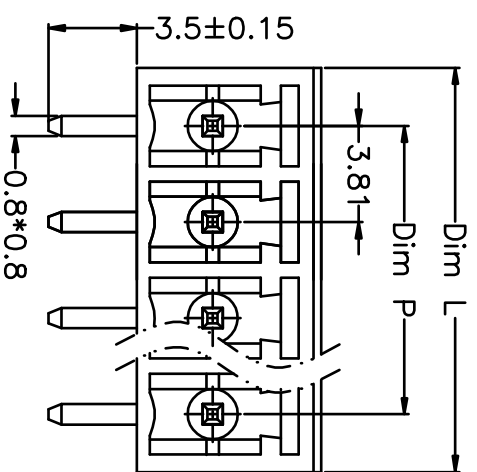
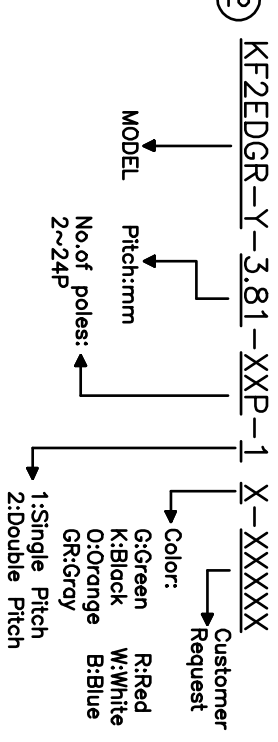


REV.	DESCRIPTION	DATE	DRAWN	APPROVED
A1	DWG.REL	2016/10/7	FANG	YANG



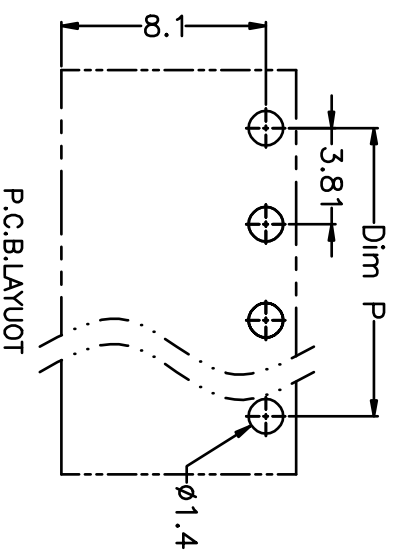
- Material
 ○Housing : PA66, UL94V-0
 ○Pin header : Brass, Tin plated
- Electrical
 UL IEC
 Rated voltage : 300V 250V
 Rated current : 8A 7A
 Insulation resistance: 500MΩ/DC500V
 Withstanding Voltage : AC1500V/1min
- Mechanical
 Operating temperature: -40°C to $+105^{\circ}\text{C}$
 Soldering temperature: $250^{\circ}\text{C} \pm 5/5\text{sec}$

HOW TO ORDER



N=Number of Poles
 Dim P=(N-1)x3.81
 Dim L=Nx3.81+0.8

Poles	Dim P	Dim L
2-6P	±0.10	±0.15
7-12P	±0.20	±0.20
13-18P	±0.25	±0.30
19-24P	±0.30	±0.40



GENERAL TOLERANCE	ANGLE TOLERANCE
X: ±0.5	X: ±5'
.X: ±0.3	.X: ±3'
.XX: ±0.1	.XX: ±1'

DRAWING TYPE	CUSTOMER
SCALE	1:1
DRAWING NO.	XP0012016-xxxx

PROJECTION	TITLE
UNITS: mm	KF2EDGR-Y-3.81-XXP
SHEET SIZE: A4	SERIES: KF2EDGR-Y

凯峰电子有限公司
 CIXI KAIFENG ELECTRONIC CO.,LTD