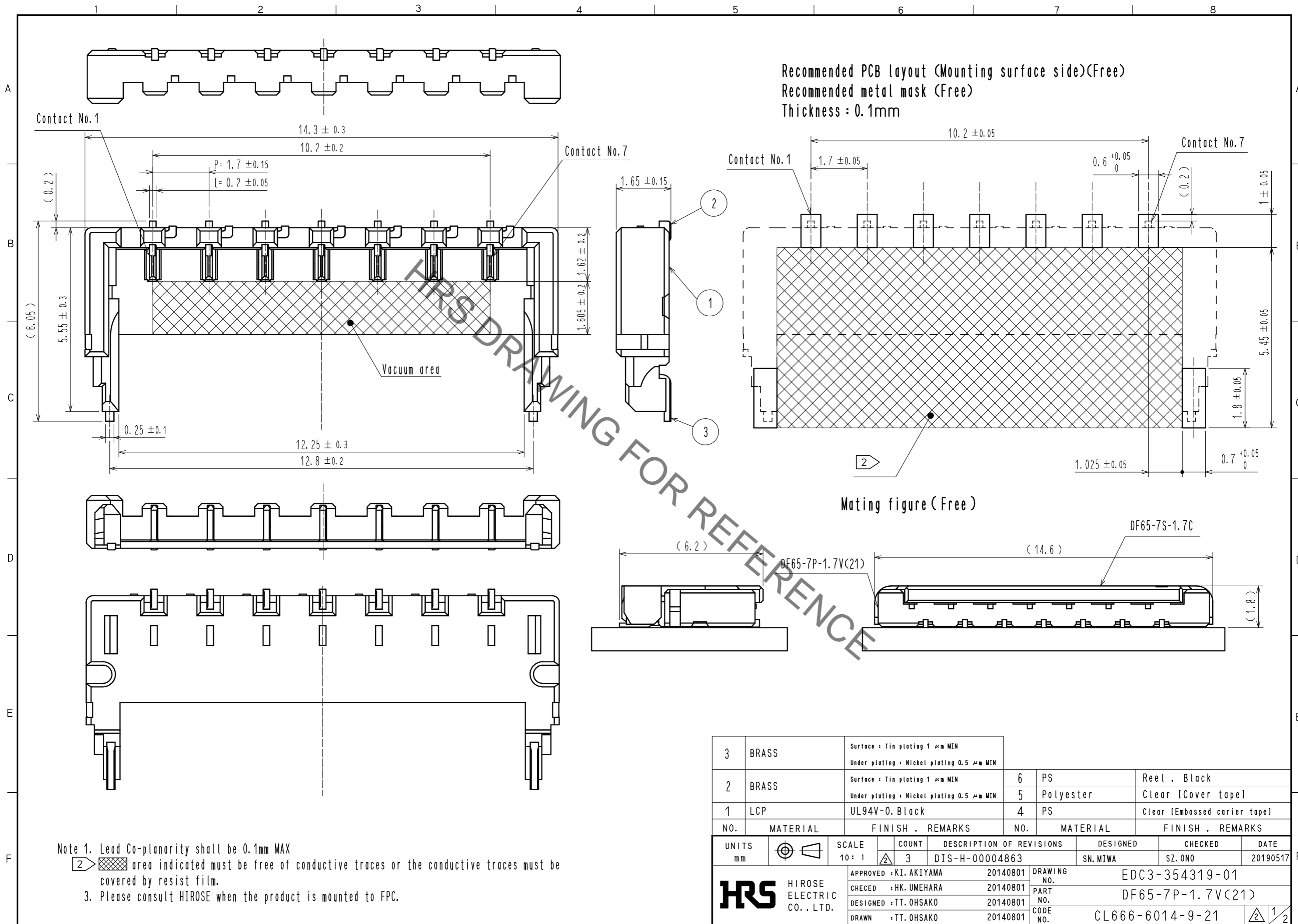
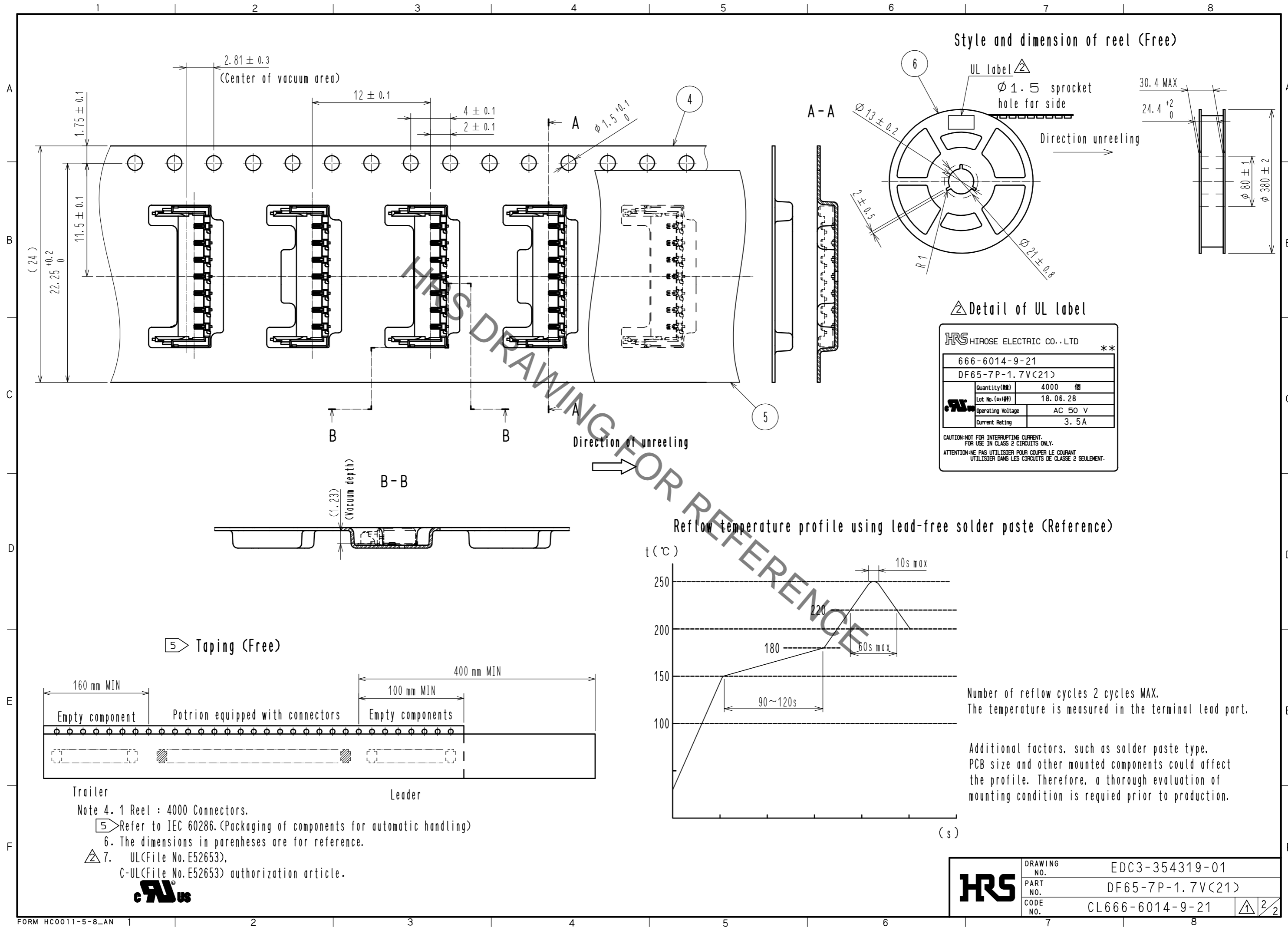


Feb.1.2020 Copyright 2020 HIROSE ELECTRIC CO., LTD. All Rights Reserved.
In case of consideration for using Automotive equipment / device which demand high reliability, kindly contact our sales window correspondents.



3	BRASS	Surface : Tin plating 1 μm MIN Under plating : Nickel plating 0.5 μm MIN	6	PS	Reel . Black		
2	BRASS	Surface : Tin plating 1 μm MIN Under plating : Nickel plating 0.5 μm MIN	5	Polyester	Clear [Cover tape]		
1	LCP	UL94V-0, Black	4	PS	Clear [Embossed carrier tape]		
NO.	MATERIAL	FINISH . REMARKS	NO.	MATERIAL	FINISH . REMARKS		
UNITS mm		SCALE 10 : 1	COUNT 3	DESCRIPTION OF REVISIONS DIS-H-00004863	DESIGNED SN.MIWA	CHECKED SZ.ONO	DATE 20190517
HRS HIROSE ELECTRIC CO., LTD.		APPROVED : KI. AKIYAMA 20140801	DRAWING NO. EDC3-354319-01				
		CHECKED : HK. UMEHARA 20140801	PART NO. DF65-7P-1.7V(21)				
		DESIGNED : TT. OHSAKO 20140801	CODE NO. CL666-6014-9-21				
		DRAWN : TT. OHSAKO 20140801					

Feb.1.2020 Copyright 2020 HIROSE ELECTRIC CO., LTD. All Rights Reserved.
In case of consideration for using Automotive equipment / device which demand high reliability, kindly contact our sales window correspondents.



HRS	DRAWING NO.	EDC3-354319-01
	PART NO.	DF65-7P-1.7V(21)
	CODE NO.	CL666-6014-9-21
		2/2