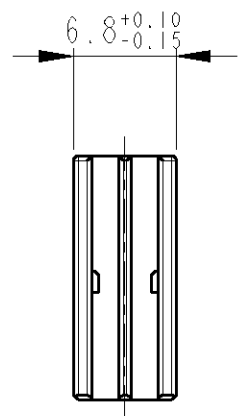
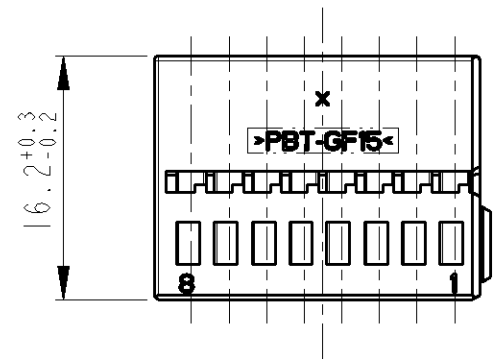
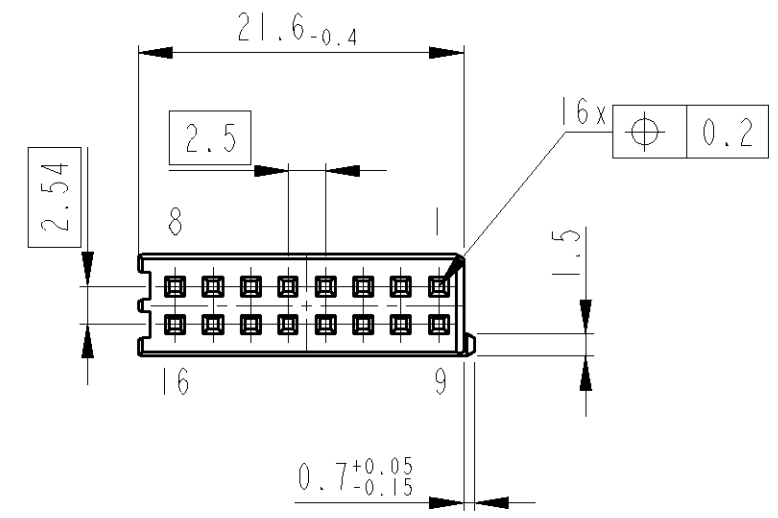


THIS DRAWING IS UNPUBLISHED
 VERTRÄULICHE UNVERÖFFENTLICHTE ZEICHNUNG
 © COPYRIGHT 2001 BY TYCO ELECTRONICS CORPORATION. ALL RIGHTS RESERVED.
 FREI FÜR VERÖFFENTLICHUNG
 - 2001
 ALLE RECHTE VORBEHALTEN

| | | | | | | | |
|--------------|------|-------------------------|-----|-----------------------------|-----------|-----|------|
| LOC | DIST | REVISIONS ÄNDERUNGEN | | | | | |
| A1 | - | P | LTR | DESCRIPTION BESCHREIBUNG | DATE | DWN | APVD |
| PROJEKT NR.: | | | | | | | |
| | | A1 | | Zeichnung neu erstellt | 04JUL2001 | KS | BK |
| | | A2 | | DRAWING UPDATE | 09JUL2003 | PS | BL |



Notes

- 1 SUITABLE COVERS: 1534094, 1534097
- 2 SUITABLE CONTACTS: 928999, 963715

Bemerkungen

- 1 Passende Abdeckkappen: 1534094, 1534097
- 2 Passende Kontakte: 928999, 963715

| | | | | | |
|--------------------------|------|----------|-----------------|------|------|
| 1534101-1 | A | PBT-GF15 | schwarz | 9011 | 1 |
| ORDER-NO. Bestell-Nr. | REV. | MATERIAL | COLOUR Farbe | RAL | POS. |

| | | | | | | | | | | | | | | | | | | |
|--|---|---|--|---------|-------|---|---------------|-------|---|------------|-------|---|-------------|-------|---|--|-----------------------------------|------------|
| THIS DRAWING IS A CONTROLLED DOCUMENT FOR TYCO ELECTRONICS CORPORATION IT IS SUBJECT TO CHANGE AND THE CONTROLLING ENGINEERING ORGANIZATION SHOULD BE CONTACTED FOR THE LATEST REVISION. DIESES ZEICHNUNGSDOKUMENT WIRD DURCH AMP INCORPORATED KONTROLLIERT. ÄNDERUNGEN, DIE DEM TECHNISCHEN FORTSCHRITT DIENEN, SIND VORBEHALTEN. DEN JEWEILS LETZTGÜLTIGEN ÄNDERUNGSSTAND ERFAHREN SIE AUF ANFRAGE. | | DWN K. Sellien 04JUL2001 | tyco Electronics AMP GmbH D - 64625 Bensheim | | | | | | | | | | | | | | | |
| DIMENSIONS: MASSEINHEITEN: mm | | CHK B. Kirsch 12JUL2001 | | | | | | | | | | | | | | | | |
| TOLERANCES UNLESS OTHERWISE SPECIFIED: ALLGEMEINTOLERANZEN | | APVD - | NAME REC. HSG., 2x8 POSN., MQS Buchsengehäuse, 2x8 pol., MQS | | | | | | | | | | | | | | | |
| <table border="1"> <tr><td>0 PLC</td><td>±</td><td>ACC. TO</td></tr> <tr><td>1 PLC</td><td>±</td><td>DIN 16901-140</td></tr> <tr><td>2 PLC</td><td>±</td><td>CENTRIC TO</td></tr> <tr><td>3 PLC</td><td>±</td><td>NOMINAL DIM</td></tr> <tr><td>4 PLC</td><td>±</td><td></td></tr> </table> | | 0 PLC | ± | ACC. TO | 1 PLC | ± | DIN 16901-140 | 2 PLC | ± | CENTRIC TO | 3 PLC | ± | NOMINAL DIM | 4 PLC | ± | | PRODUCT SPEC PRODUKTSPEZ. - | SIZE A3 |
| 0 PLC | ± | ACC. TO | | | | | | | | | | | | | | | | |
| 1 PLC | ± | DIN 16901-140 | | | | | | | | | | | | | | | | |
| 2 PLC | ± | CENTRIC TO | | | | | | | | | | | | | | | | |
| 3 PLC | ± | NOMINAL DIM | | | | | | | | | | | | | | | | |
| 4 PLC | ± | | | | | | | | | | | | | | | | | |
| MATERIAL SEE TABLE | | APPLICATION SPEC VERARBEITUNGSSPEZ. - | CAGE CODE 00779 | | | | | | | | | | | | | | | |
| FINISH/OBERFLÄCHE/FARBE SEE TABLE | | WEIGHT GEWICHT - | DRAWING NO ZEICHNUNGS-NR. C=1534101 | | | | | | | | | | | | | | | |
| | | CUSTOMER DRAWING /KUNDENZEICHNUNG | RESTRICTED TO NUR FÜR - | | | | | | | | | | | | | | | |
| | | SCALE MASSSTAB 2:1 | REV A2 | | | | | | | | | | | | | | | |

Mouser Electronics

Authorized Distributor

Click to View Pricing, Inventory, Delivery & Lifecycle Information:

[TE Connectivity:](#)

[1534101-1](#)