

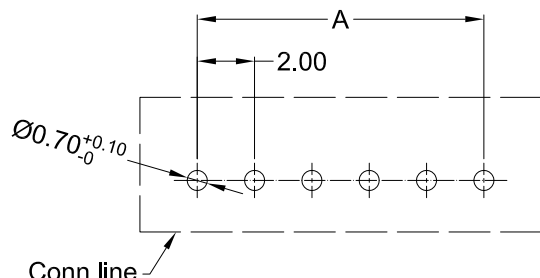
Reverse Kink(K1)

■ Specifications :

- Voltage rating: 100V AC / DC
- Current rating: 2A AC / DC
- Withstanding voltage: 800V AC/minute
- Temperature range: -25°C~+85°C
- Insulation resistance: ≥1000MΩ
- Contact resistance: ≤10mΩ
- After environmental testing: ≤20mΩ

X2016 W V X-XX KX -N0 SN XX
 ① ② ③ ④ ⑤ ⑥ ⑦ ⑧ ⑨

- ① Series No.
- ② Category: W-WAFER
- ③ Welding Board Angle: V-Straight 180°
- ④ Welding Way: Blank-DIP
- ⑤ Row No.-Pin No.: XX-02P~20P
- ⑥ Plug the Pin & Special No.: K-Kink ; K1- Reverse Kink ;
- ⑦ Material: 46 -PA46 94V-0 ; N0-PA66 94V-0
- ⑧ Plating Category: SN-Bright Tin Plating ; V01-Gold Flash
- ⑨ Color : Blank-Natural Color ; GY-Gray



Recommended P.C.B Layout
 General Tolerance±0.05

| Poles | Dimensions (mm) | | | Poles | Dimensions (mm) | | | Poles | Dimensions (mm) | | |
|-------|-----------------|-------|-------|-------|-----------------|-------|-------|-------|-----------------|-------|-------|
| | A | B | C | | A | B | C | | A | B | C |
| 02 | 2.00 | 6.00 | 4.80 | 09 | 16.00 | 20.00 | 18.80 | 16 | 30.00 | 34.00 | 32.80 |
| 03 | 4.00 | 8.00 | 6.80 | 10 | 18.00 | 22.00 | 20.80 | 17 | 32.00 | 36.00 | 34.80 |
| 04 | 6.00 | 10.00 | 8.80 | 11 | 20.00 | 24.00 | 22.80 | 18 | 34.00 | 38.00 | 36.80 |
| 05 | 8.00 | 12.00 | 10.80 | 12 | 22.00 | 26.00 | 24.80 | 19 | 36.00 | 40.00 | 38.80 |
| 06 | 10.00 | 14.00 | 12.80 | 13 | 24.00 | 28.00 | 26.80 | 20 | 38.00 | 42.00 | 40.80 |
| 07 | 12.00 | 16.00 | 14.80 | 14 | 26.00 | 30.00 | 28.80 | | | | |
| 08 | 14.00 | 18.00 | 16.80 | 15 | 28.00 | 32.00 | 30.80 | | | | |

| | | | | |
|---------------------|------------------------|---------------|-------------|-----------------------|
| X2016WV-XXKX-46SNGY | Nylon 46 UL 94V-0 Gray | Brass | Tin-Plated | X2016H |
| X2016WV-XXKX-N0V01 | Nylon 66 UL 94V-0 | | Gold-Flash | |
| X2016WV-XXKX-N0SN | | | Tin-Plated | |
| PART NO | Material | Material(Pin) | Finish(Pin) | Suitable XKB Terminal |

For and on behalf of
XKB INDUSTRIAL PRECISION CO., LIMITED
 香港星坤工業精密有限公司

| | | | | | | |
|-----------|-------------|------|---------|----------|------------------------|------|
| △ X | | | | | ANGULAR | ±5° |
| △ X | | | | | L ≤ 4 | ±0.2 |
| △ X | | | | | 4 < L ≤ 16 | ±0.3 |
| △ X | | | | | 16 < L ≤ 63 | ±0.4 |
| MARK | DESCRIPTION | DATE | REVISED | APPROVED | L > 63 | ±0.5 |
| REVISIONS | | | | | UNSPECIFIED TOLERANCES | |

| | | | | | |
|------|--|------|--|------------|-----------------------------------|
| DSND | | DATE | | SCALE: N/A | MODEL TYPE: X2016WV-XXKX-XXXXX |
| DWN | | DATE | | VIEW: | PART NO.: |
| CHKD | | DATE | | UNIT: mm | 2.00 mm Crimp Style Connectors |
| APPD | | DATE | | SIZE: A4 | DWG NO.: |
| | | | | WEIGHT | SHEET |
| | | | | 1.0g | 1/1 |
| | | | | REVISION | A0 |

XKB INDUSTRIAL PRECISION CO., LIMITED