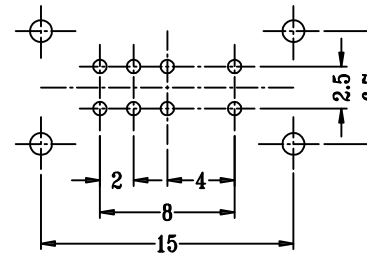
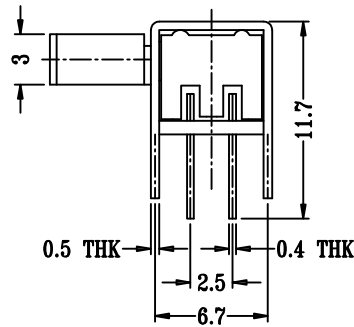
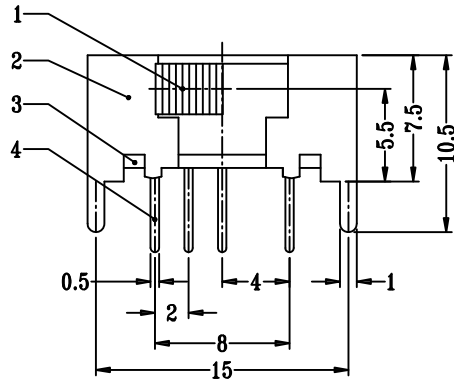


**SCHEMATIC (SHORTING)**



**P.C.B LAYOUT  
BOTTOM VIEW**

SK-23D05-X

L (mm)
2 ~ 10

ITEM	PAPT NAME	TER,NO	QTY	MATERIAL	FINISHING	REMARK
④	Terminal	8	8	Brass (0.30t)	ag Plated	
③	Base	1	1	Phenolic Resin	Natural	
②	Cover	1	1	Sus	Natural	
①	Keystake	1	1	Pom	Black	

RATING	0.3A 50V DC
CIRCUIT	2P2T
CONTACT RESISTANCE	100m MAX.
TRAVEL	2mm
OPERATING FORCE	250±100gf
OPERATING LIFE(cycles)	10,000

MARK	DESCRIPTION	DATE	REVISED	APPROVED	UNSPECIFIED TOLERANCES
ΔX					ANGULAR ±5°
ΔX					L ≤ 4 ±0.2
ΔX					4 < L ≤ 16 ±0.3
					16 < L ≤ 63 ±0.4
					L > 63 ±0.5

DSND		DATE		SCALE: N/A	MODEL TYPE: SLIDE SWITCH	
DWN		DATE		VIEW:	PART NO.: SK-23D05	
CHKD		DATE		UNIT: mm	DWG NO.: SK-23D05X	
APPD		DATE		SIZE: A4		
XKB INDUSTRIAL PRECISION CO., LIMITED				WEIGHT	SHEET	REVISION
				1.0g	1/1	A0