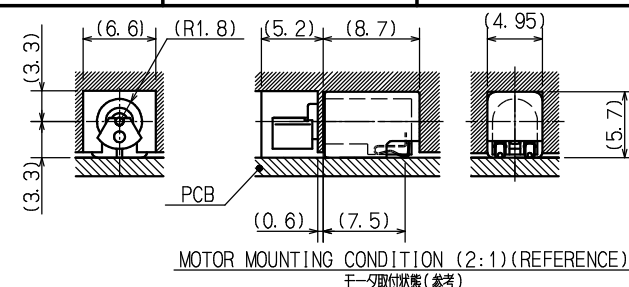
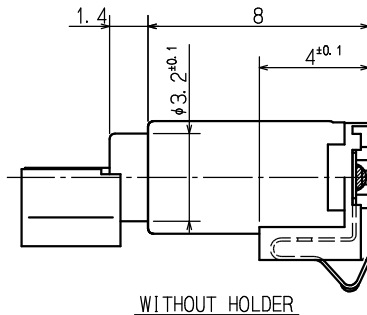
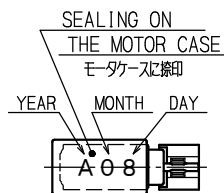
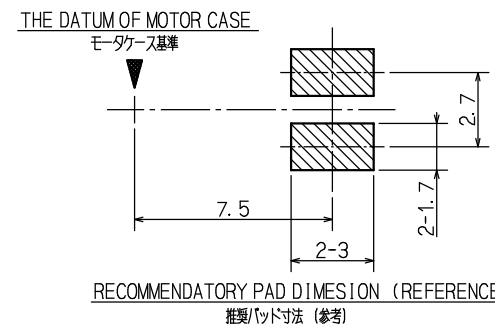
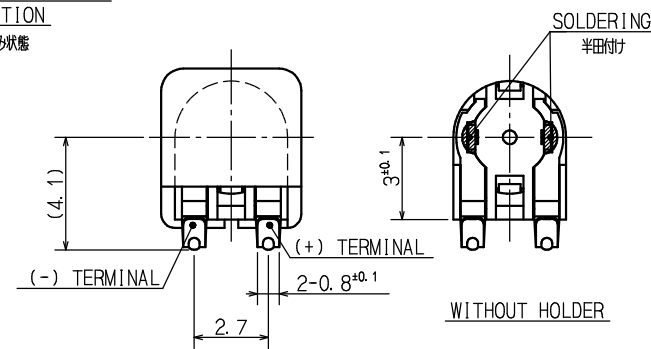
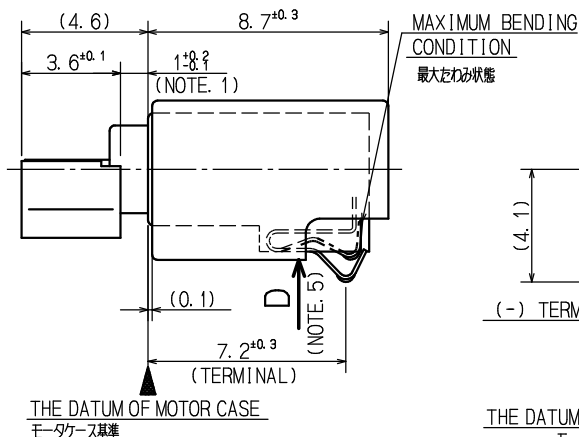
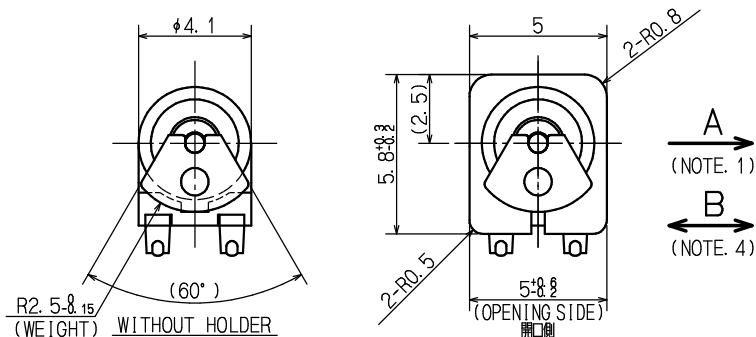


NOTES

1.  $1 \pm 0.2$  IS THE LENGTH WHEN A SHAFT IS PUSHED INTO 'A' DIRECTION.  
 $1 \pm 0.2$  は、出力軸を矢印A方向へ押し付け時の寸法を示す。
2. DIRECTION OF ROTATION IS FREE.  
 出力軸の回転方向は、規定しない。
3. END PLAY : 0.3 MAX.  
 スラストガタ
4. HOLDING STRENGTH OF WEIGHT (B DIRECTION) : 29.4 N {3 kgf} MIN.  
 フンドウの保持強度(矢印B方向)
5. NOT ALLOWED TO PUSH THE TOP OF TERMINALS INTO THE FACE D.  
 端子の頂点をD面より中に押し込まないこと。



REFERENCE



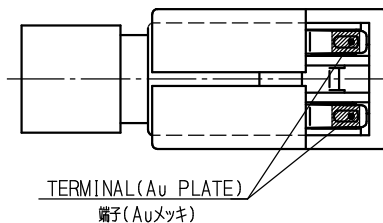
YEAR: THE END FIGURE OF A. D.  
 ・DOMESTIC MADE / 国内生産 2010=0, 2011=1, 2012=2, ...  
 ・FOREIGN MADE / 海外生産 2010=A, 2011=B, 2012=C, ...

MONTH

DAY

DAY	1	2	3	4	5	6	7	8	9	10	11	12	13	14	15	16
CODE	1	2	3	4	5	6	7	8	9	0	A	B	C	D	E	F
DAY	17	18	19	20	21	22	23	24	25	26	27	28	29	30	31	
CODE	G	H	J	K	L	N	P	Q	R	S	T	U	X	Y	Z	

LOT NO. SEALING (2:1)  
 (LOT No. A08)  
 ロットNo. 捺印例



o  
n  
m  
l  
k  
J  
I  
h  
g  
f  
e  
d  
c  
b  
a

検図項目

LA4-459QB 1

適用型式 個数

APPROVED	CHECKED	CHECKED	DESIGNED	DRAWN	NAME	OVER 250 UP TO 1000	±0.3	±0.5	±1	±	TOLERANCES	HEAT TREATMENT 熱処理	SURFACE TREATMENT 表面処理	
						OVER 63 UP TO 250	±0.2	±0.3	±0.6	±		ANGLE ± 2°		
						OVER 16 UP TO 63	±0.1	±0.2	±0.4	±	FINISH/ROUGHNESS 仕上げ程度	REMARK 摘要	TWA	MATERIAL 材料
						OVER 0 UP TO 16	±0.05	±0.1	±0.2	±			0	
						UNIT (mm)	A	B	Ⓒ	S				
						SCALE	5:1		OUTLINE DRAWING / ミニモータガイド					
						DATE	2010/10/08		DRAW No.		B3ASLxxxxLA4-459QB			
SYM.	DATE	EXCH. No.	REVISION 変更記事	SYM.	DATE	EXCH. No.	REVISION 変更記事							