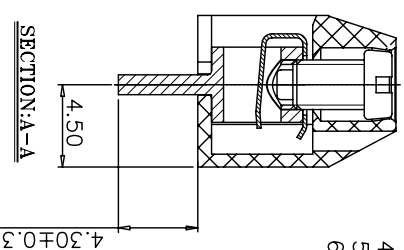
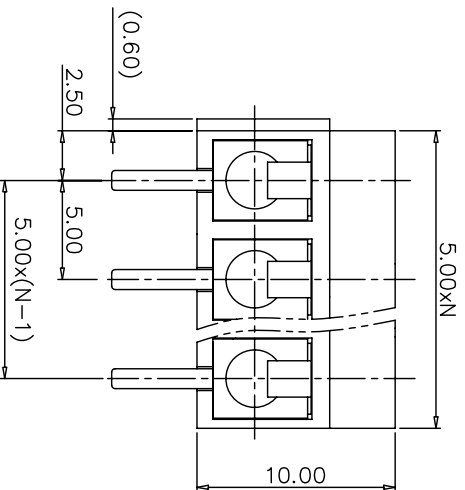
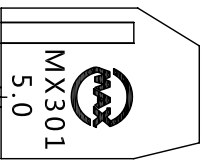
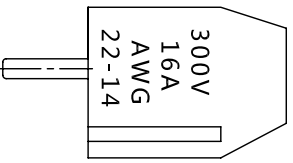
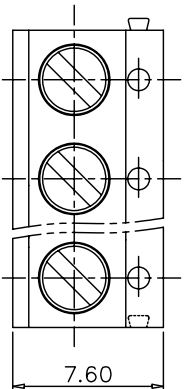
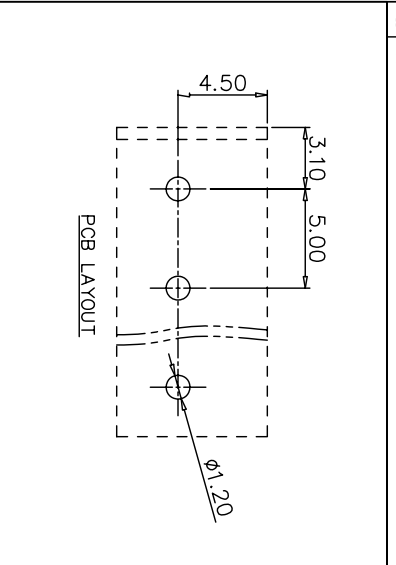


| ZONE | REV | DESCRIPTION | DATE | APPROVED |
|------|-----|-------------|------|----------|
| | | | | |



- NOTES1:
- UL Standard
 - 1. Rated Voltage/Current : 300V / 16A
 - 2. Torque Value : M2.5 , 2.60Lb.in
 - 3. Wire Range : 22~14AWG
- IEC Standard
- 1. Rated Voltage/Current : 250V / 17.5A
 - 2. Torque Value : M2.5 , 0.29N.m
 - 3. Wire Range : 0.75~1.5mm²
- NOTES2:
- 1. Dimension shall be interpreted per ASME Y14.5-2009
 - 2. Pitch : 5.0mm, Poles : N=02~24P
 - 3. Stripping length : 5~6mm
 - 4. Withstanding Voltage : AC2000V/1Min.
 - 5. Operating temperature: -30°C~+120°C
 - 6. Undimensioned Tolerances:

| Total Pitch Tolerances | | | | | | | | | | | | Nominal dimension range | | | | | | | | | | | |
|------------------------|-------|-------|------|-------|-------|-------|-------|-------|-------|-------|-------|-------------------------|-------|-------|-------|-------|-------|-----|-----|-----|-----|-----|-----|
| over | 0 | 30 | 53 | 70 | 90 | 115 | 150 | 250 | 350 | 500 | to | over | 0 | 30 | 53 | 70 | 90 | 115 | 150 | 200 | 250 | 320 | to |
| 0 | 30 | 53 | 70 | 90 | 115 | 150 | 250 | 350 | 500 | to | to | 0 | 30 | 53 | 70 | 90 | 115 | 150 | 200 | 250 | 320 | to | to |
| ±0.18 | ±0.20 | ±0.25 | ±0.3 | ±0.35 | ±0.44 | ±0.60 | ±0.70 | ±0.85 | ±0.20 | ±0.25 | ±0.30 | ±0.35 | ±0.44 | ±0.55 | ±0.70 | ±0.80 | ±0.90 | 0.2 | 0.3 | 0.3 | 0.2 | 0.3 | 0.5 |



THIRD ANGLE PROJECTION

CHKD: /

DRFT: /

MX301V-5.0-XXP-XC

MAXU 慈溪市迈旭电子有限公司
Cixi Maixu Electronics Co., Ltd.

SIZE: FSQM NO. DWG NO.

REV

MM (INCH) DO NOT SCALE DRAWING SHEET