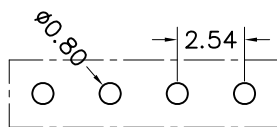
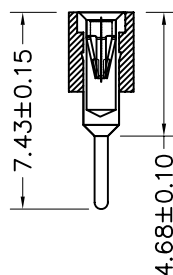
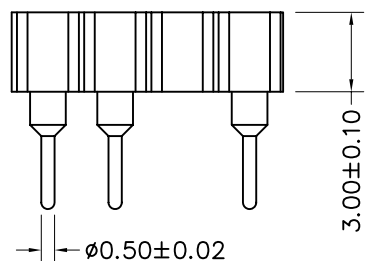
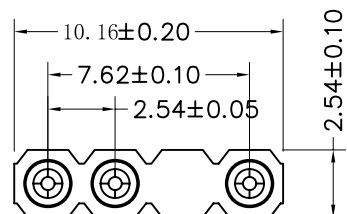


环保物料

TEL:0769-82001899



P. C. B LAYOUT

Technical Data

Material:

Pin(outer sleeve): Brass, machined CuZn38Pb2

Plating(outer sleeve):

Tin Plated: $2\mu\text{m}/80\mu\text{Ni}$, $5\mu\text{m}/200\mu\text{Sn}$

Gold Plated: $2\mu\text{m}/80\mu\text{Ni}$, $1\mu\text{m}$ gold

Plating(Contact): $2\mu\text{m}/80\mu\text{Ni}$, gold or Tin plated

Insulator: PPS UL94V-0

Clp(Contact 4 Finger): Beryllium copper, heat treated

Electrical:

Current rating: 3Amps/contact max.

Contact resistance: $\leq 4\text{m}\Omega$ /contact

Insulation resistance: $\geq 1000\text{M}\Omega$ at $V=100\text{V}$

Operating voltage: 60VAC/DC

Mechanical:

Operating temperature: -40°C to $+105^\circ\text{C}$

Soldering temperature: $+255^\circ\text{C}$

TOLERANCE UNLESS OTHERWISE

X.	± 0.30	X°	$\pm 5^\circ$
.X	± 0.20	.X°	$\pm 2^\circ$
.XX	± 0.08	.XX°	$\pm 1^\circ$
.XXX	± 0.03	.XXX°	$\pm 0.5^\circ$

DRAWN

CK tan

CHKD

APPD

VIEW

XFCN兴飞连接器有限公司
CONNECTORS XFCN CONNECTORS CO., LTD.

PRODUCT NAME

2.54mm Machined Female Header

PART. NO.

MF254V-11-04N2-0743

SHEET

1/1

DATE

2010. 4. 12

UNITS

mm

SCALE

1:1

DWG. NO.

009

AO

VER

MODIFICATION

DRAW

DATE