



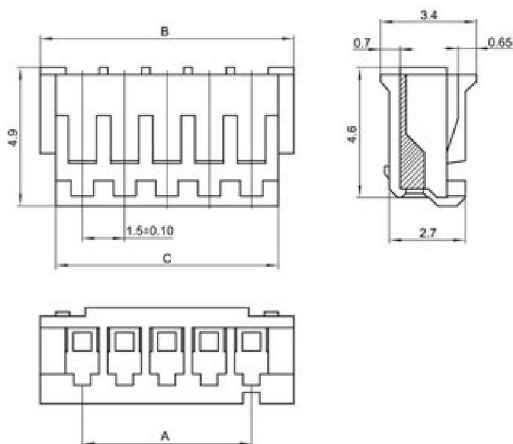
◆ SPECIFICATIONS

Unit:mm

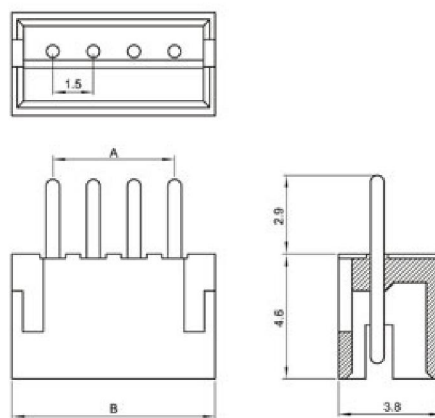
- ◇ Poles: 2~16
- ◇ Applicable wire: AWG#28-#22
- ◇ Voltage rating: 250V DC/AC
- ◇ Current rating: 1.0A
- ◇ Withstand voltage: 500V AC
- ◇ Working Temperature: -25°C ~ +85°C
- ◇ Insulation resistance: $\geq 1000M\Omega$
- ◇ Contact resistance: $\leq 0.02\Omega$
- ◇ Applicable PC board thickness: 0.6~1.2mm

 UL:Recognized No.E309635
 RoHS-specification and
 Halogen-free products

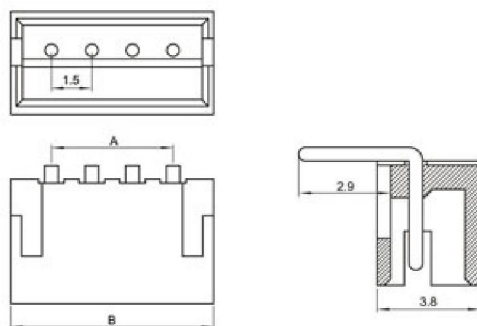
ZH-nY



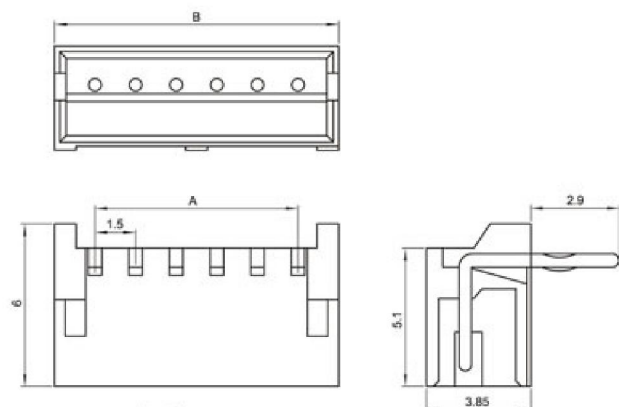
ZH-nA



ZH-nAW



ZH-nAWD



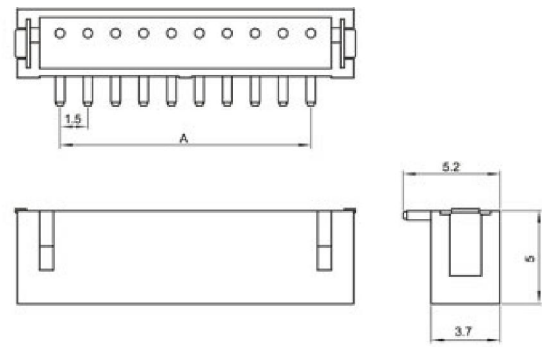
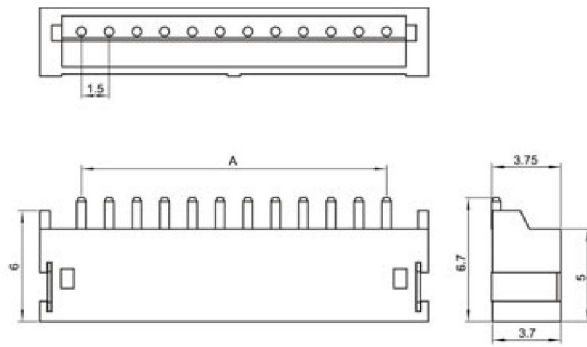
Unit:mm

ZH-nA 卧贴

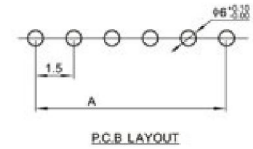
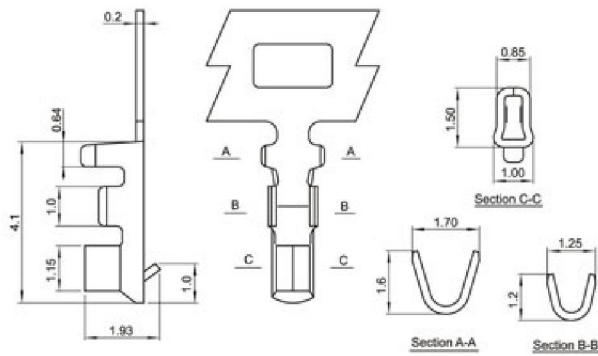


ZH-nA 立贴





ZH-PT



Terminal(ZH)

| Type | Applicable wires | | O.D of wire ins mm | Material | Finish |
|-------|------------------|-------|-----------------------|-------------|------------|
| | mm ² | AWG# | | | |
| BM-ZH | 0.06~0.3 | 28~22 | 1.2~1.9 | Phos.bronze | Tin-plated |

| Poles | Type | Size(mm) | | | Poles | Type | Size(mm) | |
|-------|--------|----------|------|------|-------|--------|----------|------|
| | | A | B | C | | | A | B |
| 2 | ZH-2Y | 1.5 | 4.5 | 3.4 | 2 | ZH-2A | 1.5 | 4.5 |
| 3 | ZH-3Y | 3.0 | 6.0 | 4.9 | 3 | ZH-3A | 3.0 | 6.0 |
| 4 | ZH-4Y | 4.5 | 7.5 | 6.4 | 4 | ZH-4A | 4.5 | 7.5 |
| 5 | ZH-5Y | 6.0 | 9.0 | 7.9 | 5 | ZH-5A | 6.0 | 9.0 |
| 6 | ZH-6Y | 7.5 | 10.5 | 9.4 | 6 | ZH-6A | 7.5 | 10.5 |
| 7 | ZH-7Y | 9.0 | 12.0 | 10.9 | 7 | ZH-7A | 9.0 | 12.0 |
| 8 | ZH-8Y | 10.5 | 13.5 | 12.4 | 8 | ZH-8A | 10.5 | 13.5 |
| 9 | ZH-9Y | 12.0 | 15.0 | 13.9 | 9 | ZH-9A | 12.0 | 15.0 |
| 10 | ZH-10Y | 13.5 | 16.5 | 15.4 | 10 | ZH-10A | 13.5 | 16.5 |
| 11 | ZH-11Y | 15.0 | 18.0 | 16.9 | 11 | ZH-11A | 15.0 | 18.0 |
| 12 | ZH-12Y | 16.5 | 19.5 | 18.4 | 12 | ZH-12A | 16.5 | 19.5 |
| 13 | ZH-13Y | 18.0 | 21.0 | 19.9 | 13 | ZH-13A | 18.0 | 21.0 |
| 14 | ZH-14Y | 19.5 | 22.5 | 21.4 | 14 | ZH-14A | 19.5 | 22.5 |
| 15 | ZH-15Y | 21.0 | 24.0 | 22.9 | 15 | ZH-15A | 21.0 | 24.0 |
| 16 | ZH-16Y | 22.5 | 25.5 | 24.4 | 16 | ZH-16A | 22.5 | 25.5 |