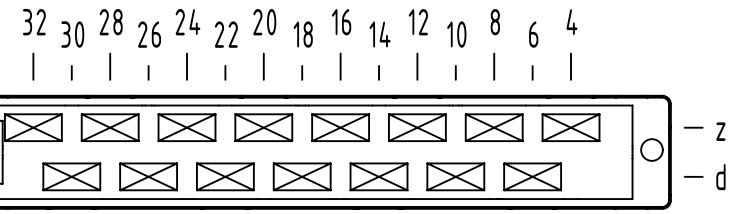


A
contact arrangement

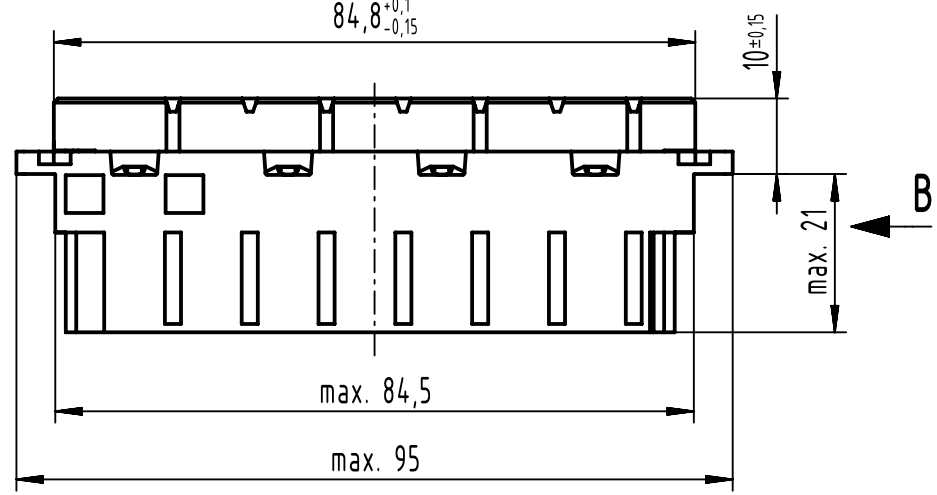


15 contacts

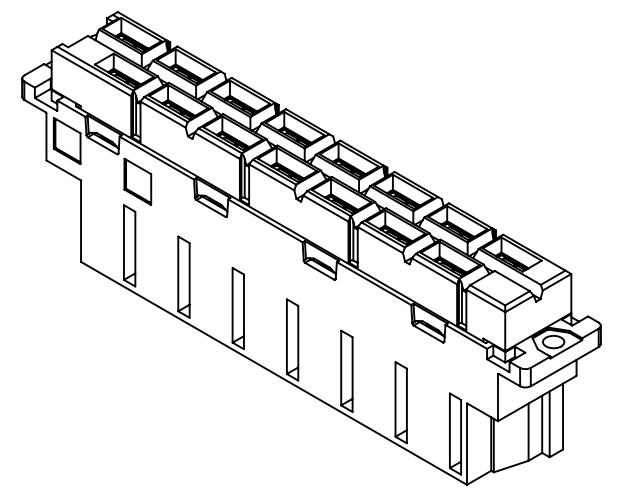
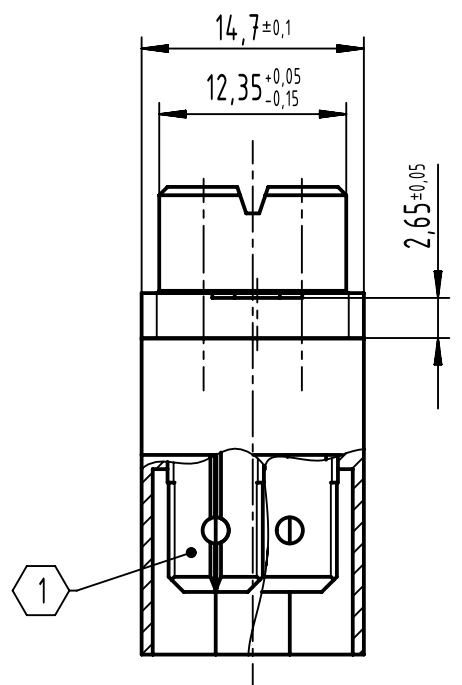
☒ = position with contact

□ = position without contact

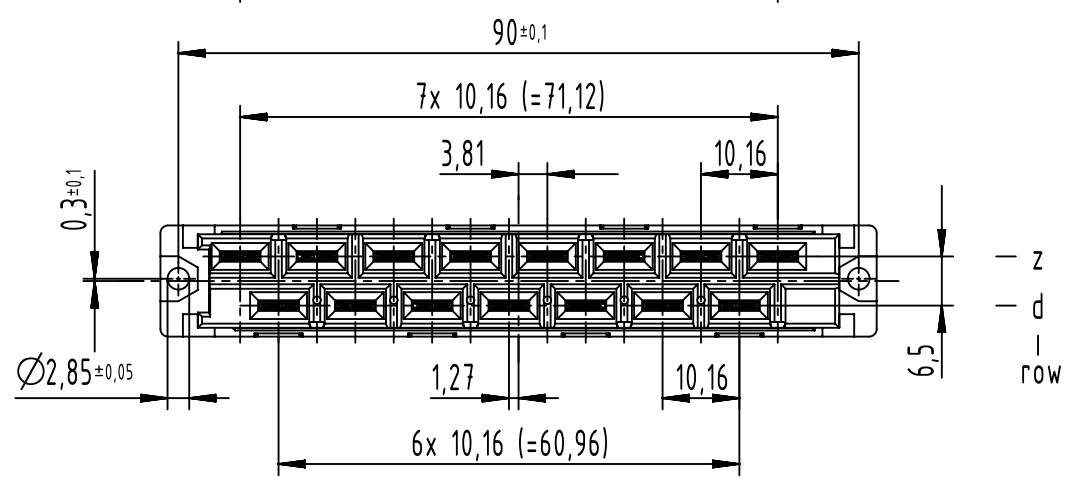
A



B (2:1)



32 4 — position



further information see product data sheet
contact surface Ag

① for faston 6,3x0,8 female contact
acc. to DIN 46245 and DIN 46247

All rights reserved Department EL PD		All Dimensions in mm Original Size DIN A3	Scale 1:1	Free size tol. complementary IEC 60603-2	Ref. Sub.
HARTING D-32339 Espelkamp	Created by STORCK	Inspected by LEHNERT	Standardisation SAP_WFRT	Date 2022-03-04	State Final Release
Title DIN Power type H15 female faston across					Doc-Key / ECM-Nr. 100142023/UGD/005/C 50000021314.0
Type TB		Number 09062152811		Rev. C	Page 1/1