

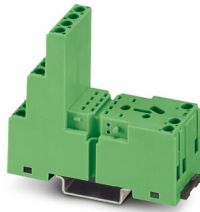
Relay base - PR2-BSC3/4X21

2833576

<https://www.phoenixcontact.com/us/products/2833576>



Please be informed that the data shown in this PDF document is generated from our Online Catalog. Please find the complete data in the user documentation. Our General Terms of Use for Downloads are valid.



Relay base PR2-B, for industrial relay REL-IR with 2 or 4 changeover contacts, 1/3-level design, screw connection, plug-in option for input/interference suppression modules, for mounting on NS 35/7,5

Your advantages

- Relay retaining bracket with labeling field and ejection function
- Plug-in input/interference suppression modules

Commercial Data

Item number	2833576
Packing unit	1 pc
Minimum order quantity	10 pc
Note	Made to Order (non-returnable)
Sales Key	C05
Product Key	CK6313
Catalog Page	Page 385 (C-7-2015)
GTIN	4017918933807
Weight per Piece (including packing)	81.12 g
Weight per Piece (excluding packing)	73.07 g
Customs tariff number	85366990
Country of origin	CN

Relay base - PR2-BSC3/4X21

2833576

<https://www.phoenixcontact.com/us/products/2833576>



Technical Data

Product properties

Product type	Relay socket
--------------	--------------

Electrical properties

Nominal voltage U_N	300 V AC/DC
Nominal current I_N	12 A

Connection data

Input side

Connection method	Screw connection
Stripping length	7 mm
Screw thread	M3
Conductor cross section solid	0.2 mm ² ... 2.5 mm ² 0.2 mm ² ... 1.5 mm ² (2 conductors with the same cross-section)
Conductor cross section flexible	0.2 mm ² ... 2.5 mm ² 0.2 mm ² ... 1.5 mm ² (2 conductors with the same cross-section)
Conductor cross section AWG	26 ... 14 2 conductors with the same cross-section

Output side

Connection method	Screw connection
Stripping length	7 mm
Screw thread	M3
Conductor cross section solid	0.2 mm ² ... 2.5 mm ² 0.2 mm ² ... 1.5 mm ² (2 conductors with the same cross-section)
Conductor cross section flexible	0.2 mm ² ... 2.5 mm ² 0.2 mm ² ... 1.5 mm ² (2 conductors with the same cross-section)
Conductor cross section AWG	26 ... 14 2 conductors with the same cross-section

Dimensions

Width	27 mm
Height	78.5 mm
Depth Retaining bracket	86 mm (EL2-P35)

Environmental and real-life conditions

Ambient conditions

Ambient temperature (operation)	-25 °C ... 85 °C
Ambient temperature (storage/transport)	-25 °C ... 85 °C

Mounting

Relay base - PR2-BSC3/4X21

2833576

<https://www.phoenixcontact.com/us/products/2833576>



Mounting type	DIN rail mounting
Mounting position	any

Relay base - PR2-BSC3/4X21



2833576

<https://www.phoenixcontact.com/us/products/2833576>

Classifications

ECLASS

ECLASS-9.0	27371603
ECLASS-10.0.1	27371603
ECLASS-11.0	27371603

ETIM

ETIM 7.0	EC001456
----------	----------

UNSPSC

UNSPSC 21.0	39122335
-------------	----------

Relay base - PR2-BSC3/4X21

2833576

<https://www.phoenixcontact.com/us/products/2833576>



Environmental Product Compliance

China RoHS	Environmentally friendly use period: unlimited = EFUP-e
	No hazardous substances above threshold values

Relay base - PR2-BSC3/4X21

2833576

<https://www.phoenixcontact.com/us/products/2833576>



Accessories

Marker labels

Marker labels - MP 2 - 2833644

<https://www.phoenixcontact.com/us/products/2833644>

Equipment marker, labeling surface 9 x 25 mm



Phoenix Contact 2022 © - all rights reserved
<https://www.phoenixcontact.com>

Phoenix Contact USA
586 Fulling Mill Road
Middletown, PA 17057, United States
(+717) 944-1300
info@phoenixcon.com