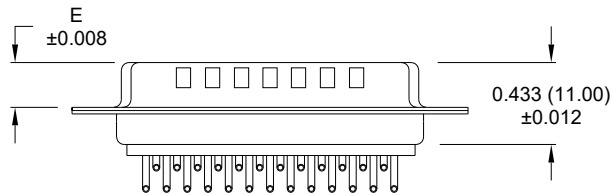
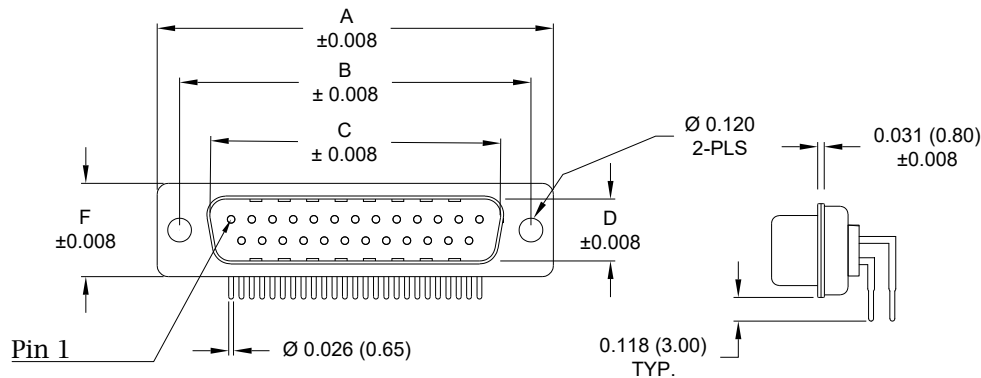


Description: 0.283" Right Angle / Machined

Dimensions (inch/mm)						
Pins	A	B	C	D	E	F
9	1.213	0.984	0.665	0.327	0.240	0.492
	30.80	25.00	16.90	8.30	6.10	12.50
15	1.543	1.311	0.994	0.327	0.240	0.492
	39.20	33.30	25.25	8.30	6.10	12.50
25	2.089	1.852	1.533	0.327	0.240	0.492
	53.05	47.05	38.95	8.30	6.10	12.50



Meets IP67 Standards

(See page 3 for sealing details)

Material:

Shell: Nickel Plated Steel
Insulator: Glass-Filled Nylon Thermoplastic, UL94 V-0
Process Temperature: 260°C
Contact: Precision Machined Copper Alloy
Seal: Flexible F08 Adhesive

Electrical:

Current Rating: 5 AMPS
Contact Resistance: 10 mOhms Max.
Insulation Resistance: 5 GOhms Min.
Working Voltage: 250V
Temperature: -55° C TO +125° C

7 7 3 - E Y Y - 1 1 Y R Y Y 1									
Series	Position	Gender	Termination	Shell Plating	RoHS Compliant	Hardware Options	Plating Options		
	E09	1 = Male	1 = PCB Mounting	3 = Nickel		00 = No Hardware	1 = Gold Flash		
	E15					01 = 0.065" Clinch Nut (Board Side)	2 = 30μ" Gold		
	E25					0A = 0.098" Clinch Nut (Board Side)			
						14 = Standard Bracket with 4-40 Screwlock			
						46 = Boardlock Bracket with 4-40 Insert			

RoHS COMPLIANT



THESE DRAWINGS AND SPECIFICATIONS ARE THE PROPERTY OF NorComp AND SHALL NOT BE REPRODUCED, COPIED OR USED AS THE BASIS FOR THE MANUFACTURE OR SALE OF APPARATUS WITHOUT WRITTEN PERMISSION.

DRAWN:
Pam Jenkins

DATE:
06/29/2009

UNITS = inch [mm]

DO NOT SCALE FROM DRAWING

NorComp

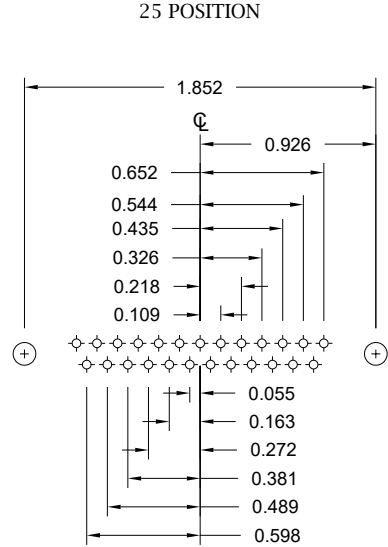
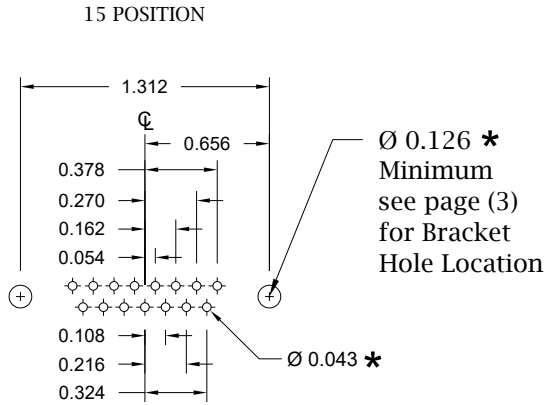
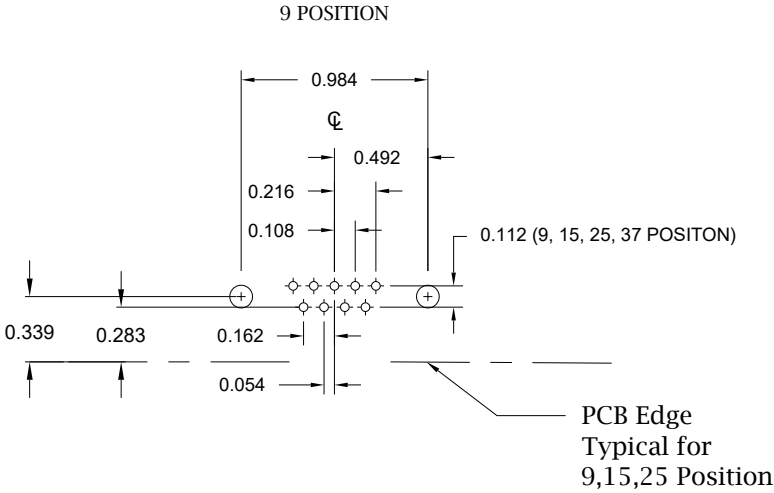
SCALE:
NTS

SHEET 1 OF 4

REV 16

DWG NO.

773-EYY-11YRYY1



UNITS = inch

* Typical Suggested Size
May Not Be Suitable For All Applications

RoHS COMPLIANT



THESE DRAWINGS AND SPECIFICATIONS ARE THE PROPERTY OF NorComp AND SHALL NOT BE REPRODUCED, COPIED OR USED AS THE BASIS FOR THE MANUFACTURE OR SALE OF APPARATUS WITHOUT WRITTEN PERMISSION.

DRAWN:
Pam Jenkins

DATE:
06/29/2009

NorComp

DO NOT SCALE FROM DRAWING

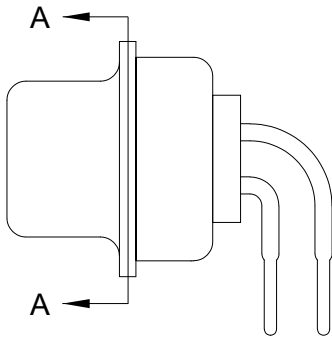
SCALE:
NTS

SHEET
2 OF
4

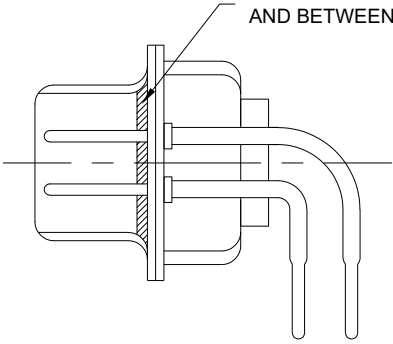
REV
16

DWG NO.

773-EYY-11YRY1



FRONT SEAL APPLIED OVER INSULATOR
AND BETWEEN FRONT & REAR SHELLS



DETAIL A-A

RoHS COMPLIANT

DO NOT SCALE FROM DRAWING

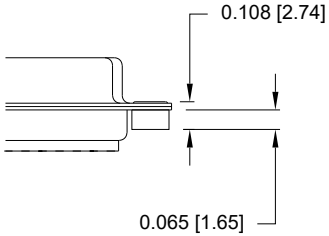


THESE DRAWINGS AND SPECIFICATIONS ARE THE PROPERTY OF NorComp AND SHALL NOT BE REPRODUCED, COPIED OR USED AS THE BASIS FOR THE MANUFACTURE OR SALE OF APPARATUS WITHOUT WRITTEN PERMISSION.	DRAWN: Pam Jenkins
	DATE: 06/29/2009

NorComp

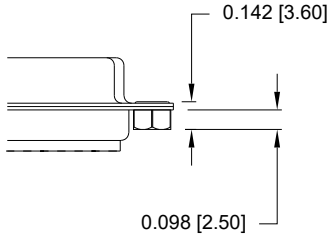
SCALE: NTS	SHEET 3 OF 4	REV 16
DWG NO. 773-EYY-11YRYY1		

01 Hardware Option
0.065" Clinch Nut (Board Side)



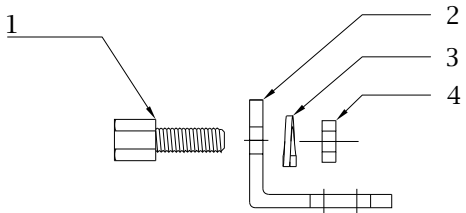
Clinch Nut has 4-40 Internal Threads

0A Hardware Option
0.098" Clinch Nut (Board Side)



Clinch Nut has 4-40 Internal Threads

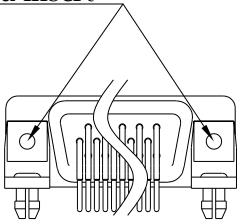
14 Hardware Option		
	Description	NorComp Part Number
1	4-40 Screwlock	SFSO4401NR
2	Bracket	K501CZ
3	Lock Washer	LW1T
4	4-40 Nut	N4401N



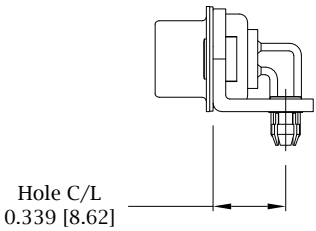
**Search Hardware Part Number To Obtain Technical Specifications.

46 Hardware Option
Boardlock Bracket and 4-40 Insert

#4-40 Threaded Insert



9-25 Position Connector Boardlock Bracket



Boardlock Brackets Come Assembled On Connector

RoHS COMPLIANT



THESE DRAWINGS AND SPECIFICATIONS ARE THE PROPERTY OF NorComp AND SHALL NOT BE REPRODUCED, COPIED OR USED AS THE BASIS FOR THE MANUFACTURE OR SALE OF APPARATUS WITHOUT WRITTEN PERMISSION.

DRAWN:
Pam Jenkins

DATE:
06/29/2009

UNITS = inch [mm]

DO NOT SCALE FROM DRAWING

NorComp

SCALE:
NTS

SHEET 4 OF 4

REV 16

DWG NO.

773-EYY-11YRY1