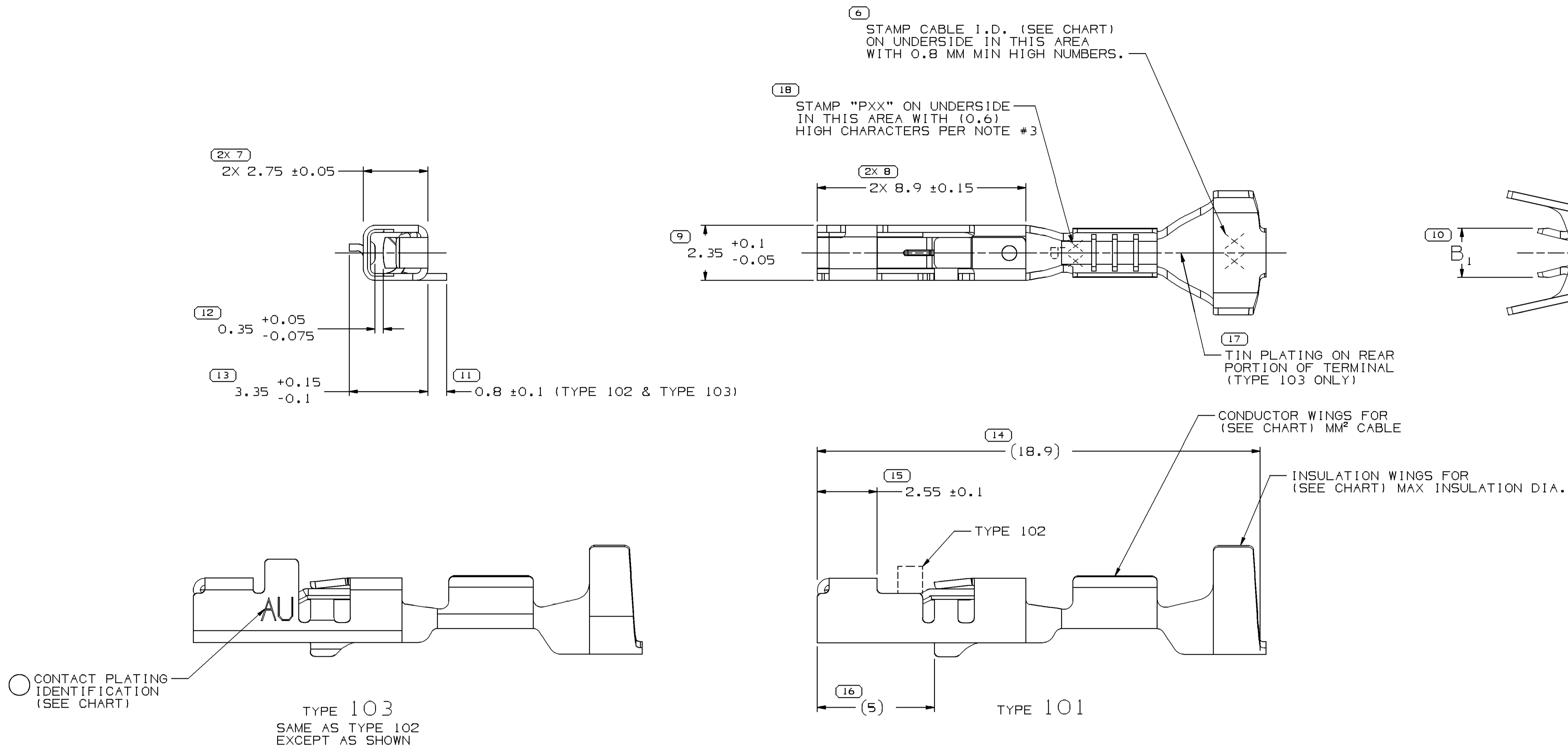


SYMBOL DEFINITION		MISSING SYMBOLS	
A DIMENSION WITHOUT AN INSPECTION REPORT SYMBOL DOES NOT REQUIRE INSPECTION. IT MAY BE CONTROLLED ON THE INDIVIDUAL COMPONENT DRAWING.	TOTAL NO OF INSPECTIONS REQUIRED	NO MISSING SYMBOL NUMBER	
	LAST NO. USED		
	20		
	18		

DWS STATUS				REVISION HISTORY				AUTH		DR		APVD/APVO	
DATE	STG	REV	N/P	CHG	ZONE								
30JL02	R	05	-	-		CLEARED REV COLUMN & ALL PARTS - UPDATED PDM ATTRIBUTES		226419	EVV	EVV	TTP	1	2
06JN03	R	06	-	-		15454820 - WAS ON SHT 3		240417	MRF	JOS	MLP		
09JN03	R	07	-	-		"SHEET 1 OF 5" WAS "SHEET 1 OF 4"		241567	AMG	AMG	RF		
01AU03	R	08	-	-		15454820 - UPDATED PDM ATTRIBUTES		242893	ADK	ADK	MLP		
13FE04	R	09	-	-		15454820 - UPDATED PDM ATTRIBUTES		251748	ADK	ADK	MLP		
16AU04	R	10	-	-		ADDED TERMINAL I.D. NOTE; REMOVED "PXX" FROM GRAPHICS		258116	TSH	TSH	RF		
16MY05	R	11	-	-		ALL APPLICABLE PARTS - MAT'L SPEC M3659423 WAS PM003659 A23; ALL PARTS - ADDED 3 COLUMNS TO CHART		268254	JS	JS	LN		
30MY06	R	12	-	-		15454820 - UPDATED PDM ATTRIBUTES		281105	TLD	TLD	MJC		
22SE08	R	13	-	-		13722264 & 13722266 - RELEASED		406110	JOA	FKV	EJB		
07OC08	R	14	-	-		13722264 & 13722266 - REMOVED		406319	ACG	FKV	EJB		
13NO08	R	15	-	-		ALL PARTS - UPDATED MAT'L CALLOUT		406634	JHP	HAD	JHP		
10MR10	R	16	-	-		ALL PARTS - UPDATED PDM ATTRIBUTES		410242	JT2	JT2	VMR		
09AU10	R	17	-	-		ALL PARTS - ADDED PLATING NOTE, UPDATED MAT'L CALLOUT AND ADDED CONTACT AREA & CRIMP AREA COLUMNS ON CHART		411496	CBG	CBG	VMR		
28SE10	R	18	-	-		ALL PARTS - UPDATED "PLATING TYPE" NOTE		412094	JRL	JRL	VMR		
04MY11	R	19	-	-		ALL PARTS - DIM 2.35 +0.1/-0.05 WAS 2.35 ±0.05		414164	JAR	JAR	VMR		
23MY11	R	20	-	-		ALL PARTS - ADDED "PREFERRED MAT'L SIZE" COLUMN		414345	JAR	JAR	VMR		
10MR14	R	21	-	-		ALL PARTS - UPDATED PDM ATTRIBUTES		420617	CGD	ESC	DG		
16JN15	R	22	-	-		15454820 - REVISED GRAPHICS		429886	ABH	JWM	LES		



NOTES

1. UNLESS OTHERWISE SPECIFIED AND/OR INDICATED:

DIMENSIONS ARE TO FACE OF VIEW SHOWN AND AUTOMATICALLY ROUNDED BY COMPUTER FOR INSPECTION (SEE MATH MODEL FOR PRECISE DIMENSIONS). FOR ALL OTHER DIMENSIONS NOT SHOWN BUT REQUIRED FOR TOOL BUILD, SEE MATH MODEL FOR PRECISE TOOL PATH DATA.

2. "*" DENOTES DIMENSIONS MADE AT CUT-OFF AND CRIMP DIE.

3. "PXX" INDICATES "P" PLUS LAST TWO DIGITS OF MAKE DIE SERIES NUMBER (P01, P02, P03, ETC). STAMP MAY BE IN ANY CONFIGURATION. (0.6) HIGH TRIANGULAR CONFIGURATION IS PREFERRED.

4. REFERENCE MATING COMPONENTS OR EQUIVALENT:

TERMINAL - 15304704

5. DO NOT PROBE, TEST OR OTHERWISE CONTACT THE INTERIOR REGION (THE SPRING OR ANY MOVING PART) OF THIS TERMINAL. SEVERE DAMAGE CAN OCCUR, COMPROMISING THE PERFORMANCE OF THE ELECTRICAL INTERFACE.

6. PLATING TYPE:

1. REFLUX TIN 1.9 - 3.3 MICROMETERS THICK WITH A COPPER UNDERPLATE 0.5 MICROMETER TO 1.0 MICROMETER THICK.

11. MATE TIN ELECTROPLATE 1.9 - 7.0 MICROMETERS THICK.

111. 1.27 MICROMETERS DIFFUSED GOLD PALLADIUM/SILVER ALLOY INLAY OVER 1.27 MICROMETERS THICK NICKEL UNDERLAY.

PLATING TYPE INFORMATION SHOWN ABOVE IS REFERENCE ONLY. PLATING REQUIREMENTS ARE CONTAINED IN APPLICABLE MATERIAL SPECIFICATION.

15454820	02	-	0.3 X 26.71	0.3 X 27.38	GOLD PLATED COPPER	0.35 - 0.5	21	1.85 - 1.2	103	2.1	SEALED (150MP)	SEE TAXI 12010295	Ø 5.2 ROUND	-	-	111	11	
15369261	01	AK	0.3 X 26.71	0.3 X 27.38	SN PLATED COPPER	1 - 1.5	15	2.4 - 1.9	101	2.95	SEALED (GT)	15366060	Ø 4 ROUND	RESTRICTED	-	1	1	
15305350	C18	-	0.3 X 26.71	0.3 X 27.38	SN PLATED COPPER	0.75 - 0.8	18	2.02 - 1.7	101	2.65	SEALED (MINI)	15305351	3.2 X 4 OVAL	RESTRICTED	15326267	1	1	
15305130	C18	-	0.3 X 26.71	0.3 X 27.38	SN PLATED COPPER	0.35 - 0.5	21	1.85 - 1.2	101	2.1	SEALED (MINI)	15366022	3.2 X 4 OVAL	RESTRICTED	15326266	1	1	
15305038	C16	-	0.3 X 26.71	0.3 X 27.38	SN PLATED COPPER	0.75 - 1	17	2.25 - 1.7	102	2.65	SEALED (150MP)	SEE TAXI 12010295	Ø 5.2 ROUND	RESTRICTED	-	1	1	
15305037	C16	-	0.3 X 26.71	0.3 X 27.38	SN PLATED COPPER	0.35 - 0.5	21	1.85 - 1.2	102	2.1	SEALED (150MP)	SEE TAXI 12010295	Ø 5.2 ROUND	RESTRICTED	-	1	1	
12191819	D16	-	0.3 X 26.71	0.3 X 27.38	SN PLATED COPPER	0.75 - 1	17	2.25 - 1.7	101	2.65	SEALED (GT)	15366060	Ø 4 ROUND	-	-	1	1	
12191818	E16	-	0.3 X 26.71	0.3 X 27.38	SN PLATED COPPER	0.35 - 0.5	21	1.85 - 1.2	101	2.1	SEALED (GT)	15366021	Ø 4 ROUND	-	-	1	1	
12191817	D16	-	0.3 X 26.71	0.3 X 27.38	SN PLATED COPPER	0.75 - 1	17	2.25 - 1.7	101	2.65	SEALED (150MP)	SEE TAXI 12010295	Ø 5.2 ROUND	-	-	1	1	
12191816	D16	-	0.3 X 26.71	0.3 X 27.38	SN PLATED COPPER	0.35 - 0.5	21	1.85 - 1.2	101	2.1	SEALED (150MP)	SEE TAXI 12010295	Ø 5.2 ROUND	-	-	1	1	
PART	NO	REV	N/P	PREFERRED MAT'L SIZE	ALTERNATIVE MAT'L SIZE	MATERIAL DESCRIPTION	SIZE (MMF)	ID	DIA	TYPE	B _{10.2}	APPLICATION	TYPICAL CABLE SEAL OR EQUIVALENT	TYPICAL SEALING CAVITY CONFIG	RESTRICTED USAGE	REPLACED BY	CONTACT AREA PLATING TYPE (SEE NOTE 6)	CRIMP AREA PLATING TYPE (SEE NOTE 6)
					PLATED													
						CABLE												

A LINE DRAWING THROUGH A PART NUMBER INDICATES THAT PHYSICAL PARTS ARE NOT AVAILABLE FOR ORDERING.	
PART NUMBERS THAT DO NOT HAVE A LINE PRESENT INDICATE THAT PHYSICAL PARTS ARE AVAILABLE FOR ORDERING.	
CONTACT DELPHI SALES TO ASSURE AVAILABILITY OF PARTS.	
DWG TYPE	PART DRAWING
STYLE	
VOLUME (OMP)	DISTR CODE
UNLESS OTHERWISE SPECIFIED THIS DOCUMENT IS IN ACCORDANCE WITH ASME Y14.5M-1994 AS MODIFIED BY THE 2003 DIMENSIONING AND TOLERANCING ADDENDUM-2001. SEPARATE PATTERNING OF FEATURES MAY BE OBTAINED SEPARATELY. REVIEWS OF DATA REFERENCES.	
ALL DIMENSIONS ARE IN MILLIMETERS	
DIMENSIONS ENCLOSED IN () INDICATE REFERENCE DIMENSIONS AND NO TOLERANCE LIMITS ARE ESTABLISHED	
DIMENSIONAL RANGE (MM) CHART C	
FROM 0 TO 12 TOLERANCE UNLESS OTHERWISE SPECIFIED	
ANGULAR TOLERANCE 12°	
THIRD ANGLE PROJECTION	
DO NOT SCALE USE MATH DATA	

DELPHI	
DELPHI PACKARD ELECTRICAL/ELECTRONIC ARCHITECTURE	
WARREN, OH	
COPYRIGHT 1995 DELPHI CORPORATION AND/OR ITS AFFILIATES. ALL RIGHTS RESERVED.	
THIS DRAWING IS THE PROPERTY OF DELPHI CORPORATION AND CONTAINS DELPHI CONFIDENTIAL INFORMATION. THE REPRODUCTION, DISTRIBUTION AND UTILIZATION OF THIS DOCUMENT OR ITS CONTENTS OR DATA, WITHOUT EXPRESS AUTHORIZATION, IS PROHIBITED.	
DATE	
DR	
APVD1 J. VILLAMIL	07DE95
APVD2 MANUEL VEGA	08DE95
APVD3 ERIC HSIEH	01AP96
APVD4	
APVD5	
SUBSTANCES OF CONCERN AND RECYCLED CONTENT, PER DELPHI (094990)	
MATERIAL COPPER ALLOY	
DRAWING NAME	
TAXI TERM F GT 150	
DRAWING NUMBER	
12191815	
SIZE	
A0	
SCALE	
10:1	
FRAME NO	
1 OF 1	
SHEET NO	
1 OF 5	
STG	
REV	
N/P	

Mouser Electronics

Authorized Distributor

Click to View Pricing, Inventory, Delivery & Lifecycle Information:

[Aptiv:](#)

[12191818](#) [12191819](#) [12191816](#) [12191817](#)