

## Stainless Steel Vandal Resistant Switches

### Types:

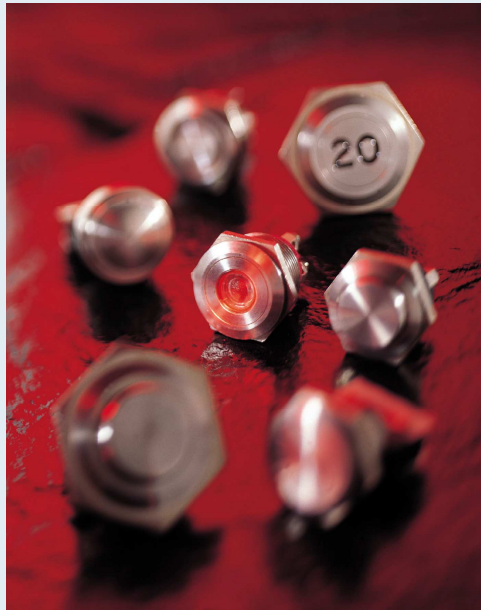
- ◆ Low Profile Vandal Resistant
- ◆ Low Profile Vandal Resistant - Latching
- ◆ Low Profile Vandal Resistant - Double Pole
- ◆ Illuminated Vandal Resistant
- ◆ Low Profile Vandal Resistant - Large Diameter
- ◆ Domed Vandal Resistant
- ◆ Prominent Vandal Resistant

### Highlights:

- Three profiles: Prominent, Doomed and Low Profile
- Front Panel or Rear Panel Sealed to IP68 or IP66 rated
- Diameter: 19mm, 21.5mm, 22mm, 28mm, 32mm
- SP push to make, SPCO, or DPCO
- Also available in Brass or Chrome Plate
- Illuminated version available in dot or ring LED indication and variety of col-

### Typical Applications:

- Entry Access Systems
- Metering Equipment
- Vending Machines
- Marine Control Panel
- Public Interactive Kiosks
- Intercom System
- Parking Lot Ticket Machines
- Rental Equipment



Manufactured from Stainless Steel, Bulgin's extensive range of vandal resistant security switches are designed with a high resistance to wear and tear, corrosion and harsh use in potentially hostile environments such as access control applications.

The front and rear panel mounted versions have three profiles – prominent, domed and low profile – with a choice of switching and IP66 & IP68 front panel sealing which combined together to meet the ergonomic, electrical and environmental demands of switch panel design. And where the ultimate strength of steel is not needed, there is a brass, chrome plated alternative. The low profile style switches are now also available with a latching, push on - push off, action.

The illuminated versions are available in dot and ring LED indication and a variety of illumination colors including bi-color LED's. Newer versions also feature LED illumination driven by 6V, 12V & 24V together with rear of panel sealing, these options will add that extra dimension to control panel layouts and functionality.

The standard range of vandal resistant switches are complemented by a range of 16mm stainless steel switches of robust construction designed for use in applications where space is at a premium.

In November 2010, Bulgin announced a new version of MPI range of illuminated vandal resistant switches. All switches are front-panel sealed to IP66. However, the new range is also rear-of-panel sealed. This makes them suitable for use outdoors or in other situations where condensation or leakage behind control panels can be problematic. Rear panel sealing is available in a variety of styles, including single and dual color with dot or ring LED illumination. Independent switch and LED terminals allows customers the flexibility to choose between permanent or controlled illumination.



For a Quote...

### Elektron Technology

31-315 Plantation Drive, Thousand Palms, CA 92276

Phone: 760-343-3650 Fax: 760-343-3445

Website: [www.elektron-technology.com](http://www.elektron-technology.com)