

B57 Series - Press Fit Telecom Connector



ORDERING GUIDE

B57 - 0 50 - 2 20 - 2 0 2

Series

B57 - Receptacle

0 - Receptacle

1 - Plug

Number Contacts

50 or 64

Contact Finish

2 - gold flash, gold plated
(2 microinches min. thickness)

5 - 15u" gold

6 - 30u" gold

Contact Style

20 - Vertical Press fit

21 - Vertical PCB

29 - Flat Cable Termination

60 - Right angle PCB(.187 tail lg)

61 - Right angle PCB(.100 tail lg)

62 - Right angle PCB(.125 tail lg)

Mounting Options

A - 4-40 standoff on pos. 1 & J-hook on pos. 25

2 - 4-40 threaded insert/.120 dia. hole

3 - 4-40 threaded insert/ 4-40 threaded hole

4 - .120 dia. hole/.120 dia. hole

5 - 4-40 threaded insert/ boardlocks

6 - 4-40 threaded insert/ boardlocks / latch

7 - .120 dia. Insert/ 4-40 threaded hole

8 - 4-40 hex standoff/ boardlocks

(the above holes panel mount first)

Shielding

0 - Metal shell

1 - All plastic

Contact Arrangement

1 - Latch

2 - Two rows of contacts

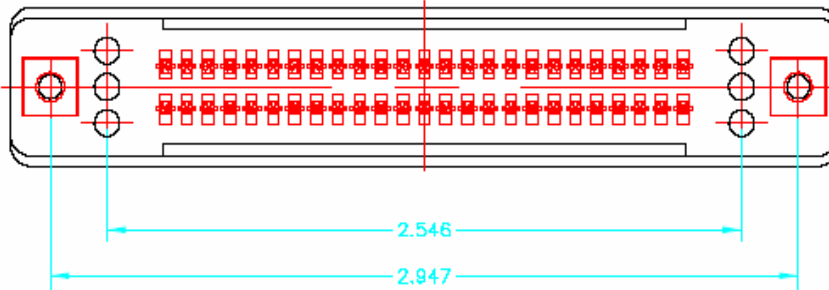
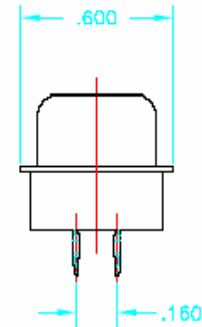
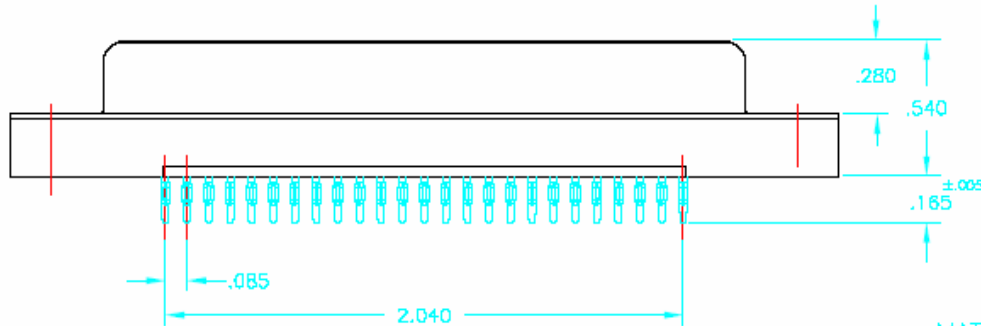
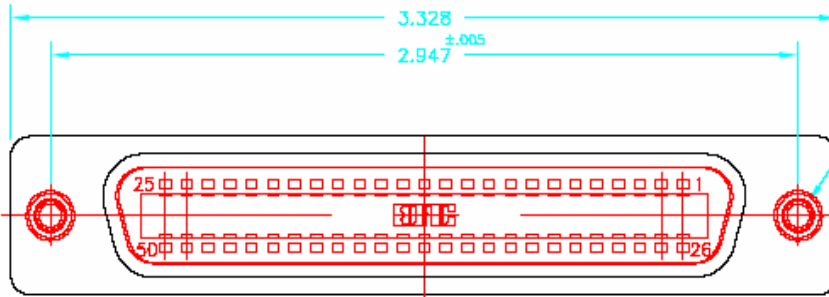


THIS IS A C.A.D. GENERATED DRAWING
DO NOT MAKE MANUAL REVISIONS TO MASTER.



ISSUE NUMBER

ORIGINAL	①
TAIL LENGTH WAS .175. P.Z 5/15/01	⑤
DIM. .180+0.005/-0.000 WAS .170±.006 AND 3.328 WAS 3.282 F.BRIONES JUL31/01	⑥
DIM. .185±.005 WAS .185-0.005/-0.000 F.BRIONES FEB.11/02	⑦



MATERIALS:

- INSULATOR : THERMOPLASTIC POLYESTER COLOR BLUE
- SHELL: STEEL, NICKEL PLATED
- CONTACTS: PHOSPHOR BRONZE GOLD PLATED ON CONTACT AREA
TIN/LEAD ON COMPLIANT SECTION OVER NICKEL
- THREADED INSERTS: BRASS, NICKEL PLATED

TO OBTAIN OPTIMUM COMPLIANT SECTION PERFORMANCE,
DRILL HOLES .038±.001 DIAMETER
COPPER PLATE, .001 MINIMUM THICKNESS FOLLOWED BY
TIN/LEAD PLATE TO PROVIDE FINISHED HOLES .030/.035 DIAMETER

50 POSITION MINIATURE RIBBON RECEPTACLE
COMPLIANT PIN (PRESS FIT)



THESE DRAWINGS AND SPECIFICATIONS ARE THE PROPERTY OF EDAC INC. AND SHALL NOT BE REPRODUCED OR COPIED OR USED AS THE BASIS FOR THE MANUFACTURE OR SALE OF APPARATUS WITHOUT WRITTEN PERMISSION.

ACAD REFERENCE NO. B57-050-220-202	
DRAWN: F.BRIONES	DATE: AUG.28/00
CHECKED:	DATE:
SCALE: IN C.A.D. 1:1	SHEET 1 OF 1
DRAWING NUMBER B57-050-220-202	ISSUE 7

CONNECTOR PART NO. B57-050-220-202