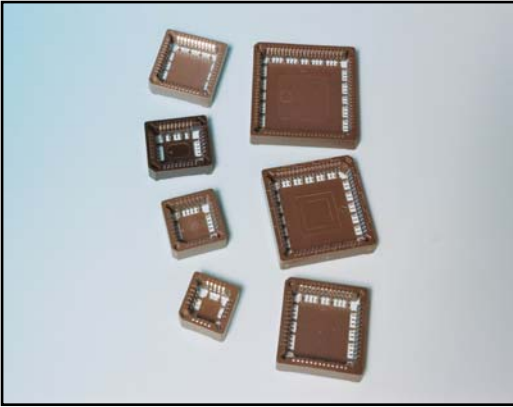


# Surface Mount PLCC Sockets



## ORDERING GUIDE

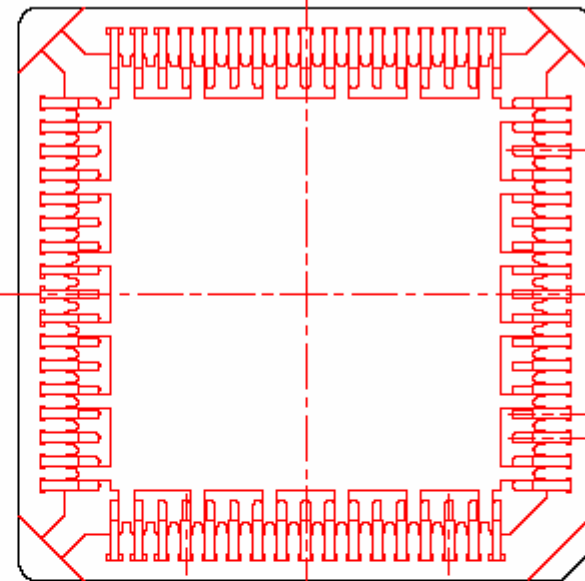
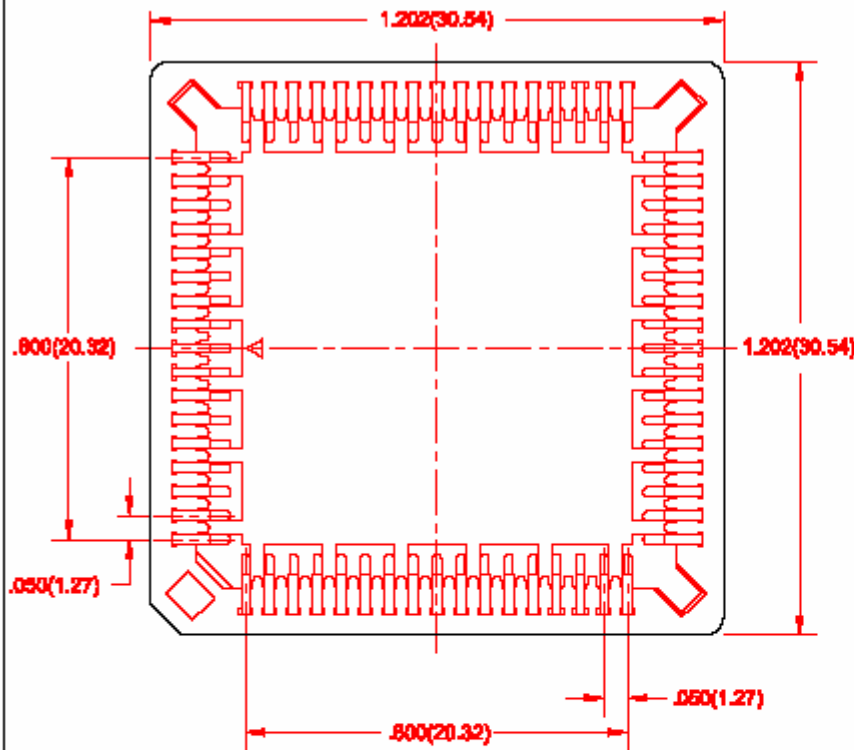
**D00 - 020 - 4 9 0 - 001**

Series  
 # of Contacts  
 Contact Plating  
 Contact Tail  
 Profile  
 Package

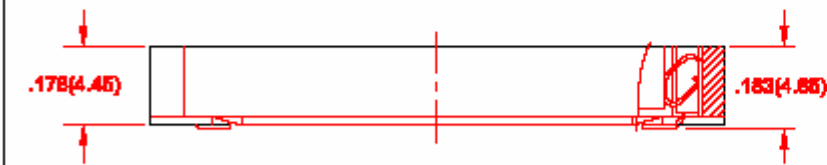
<u>Series</u>	
D00	PLCC socket
<u>Number of Contacts</u>	
020-084	
<u>Contact Plating</u>	
2	gold flash
3	15u" gold
4	150 tin/lead over nickel
6	30u" gold
9	50u" gold
<u>Contact Tail</u>	
9	surface mount
<u>Profile</u>	
0	low profile
<u>Package</u>	
001	tube
002	tape & reel

EDAC Part #	Description	Tube Qty	Tape & Reel Qty
D00-020-X90-00X	20 contact	37	450
D00-028-X90-00X	28 contact	32	400
D00-032-X90-00X	32 contact	38	500
D00-044-X90-00X	44 contact	35	300
D00-052-X90-00X	52 contact	22	250
D00-068-X90-00X	68 contact	18	225
D00-084-X90-00X	84 contact	15	200

THIS IS A C.A.D. GENERATED DRAWING  
DO NOT MAKE MANUAL REVISIONS TO MASTER.



**BOTTOM VIEW**



**MATERIALS AND FINISH**

HOUSING: POLYPHENYLENE SULFIDE  
UL 94V-0

CONTACTS: PHOSPHOR BRONZE  
150 MICRONS MIN. OF TIN LEAD  
OVER NICKEL

**SPECIFICATIONS**

INSULATION RESISTANCE: 1000 MEGOHMS MIN.

DIELECTRIC WITHSTANDING STRENGTH:  
500VAC (rms) FOR 1 MINUTE

CONTACT RESISTANCE: 30 MILLIOHMS MAX.

TEMPERATURE: -55°C TO +105°C

**PLCC SMD TYPE LOW PROFILE 68 POSITIONS**



YOUR CONNECTION TO QUALITY & SERVICE

EDAC INC  
TORONTO, ONTARIO  
CANADA

THESE DRAWINGS AND SPECIFICATIONS  
ARE THE PROPERTY OF EDAC INC. AND  
SHALL NOT BE REPRODUCED, OR COPIED  
OR USED AS THE BASIS FOR THE  
MANUFACTURE OR SALE OF APPARATUS  
WITHOUT WRITTEN PERMISSION.

ACAD REFERENCE NO. DOO (PLCC)

DRAWN: F.BRIONES DATE: MAR. 15/02

CHECKED: DATE:

PART NUMBER DOO-088-490-001

DRAWING NUMBER ISSUE

DOO-088-490-001