

Routing, Protection and Insulation

Pro-Duct

Durable and versatile routing and protection for wires and cables

HellermannTyton



Pro-Duct Wiring Duct

HellermannTyton Pro-Duct wiring duct efficiently routes and protects wire and cable while providing a professional appearance. Manufactured from high-impact, rigid PVC, the Pro-Duct family of products includes solid, slotted and high density slotted styles. Pro-Duct is offered in white, gray and black in 6-foot lengths. Other sizes and colors, including intrinsic blue, are available by special order. Mounting holes are standard on all Pro-Duct wiring duct. Contact HellermannTyton for information on ordering duct without mounting holes. A complete line of covers and accessories allow for versatility in design, installation and maintenance.

Features and Benefits

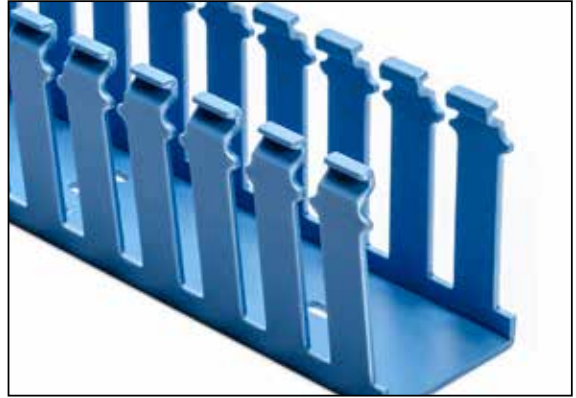
- Smooth edges protect installer and wires from abrasion.
- Wide range of styles and sizes to suit any application.
- Slotted and high density slotted duct allow for numerous breakouts and include pre-scored breakaway "fingers".
- Elongated mounting holes allow for versatility in panel design and accommodate changes during installation.
- Interchangeable covers between solid, slotted and high density slotted styles simplify inventory needs.
- Covers are wrapped with a removable clear film which protects against scratches and provides a writable surface for temporary identification during installation.
- Optional adhesive backing allows for easy temporary fitting.

Pro-Duct is U.L. Recognized, CSA Certified, CE Compliant and carries a U.L. flame rating of 94V0.

Pro-Duct is lead-free and is made with flame retardant PVC. File # 49249

Intrinsic Blue Pro-Duct

Manufactured from the same PVC material as standard Pro-Duct colors, HellermannTyton also offers an intrinsic blue color option. The intrinsic blue color indicates that the wiring contained in the duct runs to intrinsically safe components in the control panel. For more information contact HellermannTyton.



Adhesive Backing

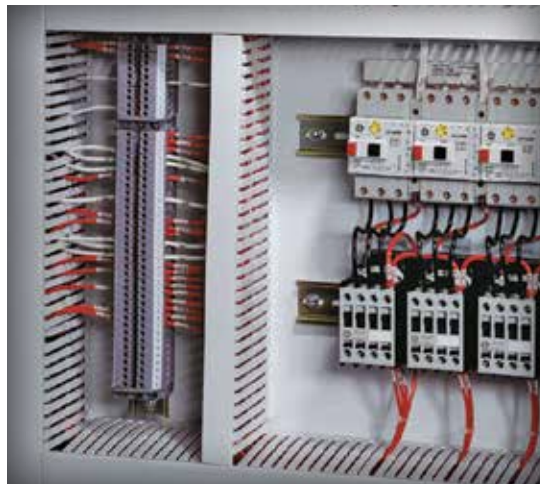
Most sizes of Pro-Duct wiring duct are available with a pressure-sensitive, rubber-based adhesive backing. The adhesive backing can be used for temporary positioning. This is an optional feature and must be specified when ordering. See product tables for adhesive options.

Please note: Adhesive duct orders are non-cancellable and non-returnable.

Duct Width	Rows of Tape	Tape Width
.50"	1	3/8"
.75"	1	1/2"
1.0"	1	3/4"
1.5"	1	1-1/8"
2.0"	2	3/4"
3.0"	2	3/4"
4.0"	2	3/4"

Modular Packaging

Pro-Duct wiring duct is available in modular, easy-to-stock packaging. Each master carton contains 120 feet of duct divided into four inner cartons of 30 feet each. This better serves the inventory needs of users who require smaller quantities of several sizes.



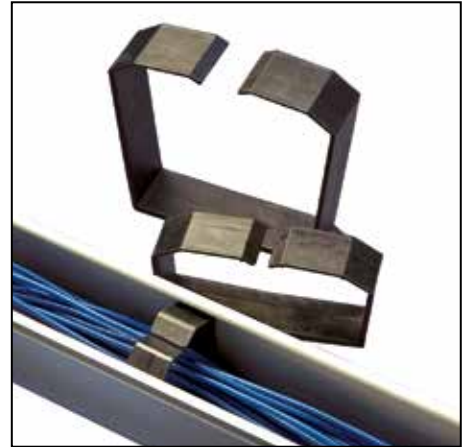
Wiring Duct Accessories

Solid Wall Wire Retainers

Solid wall wire retainers are inserted in the duct and snap into place. The retainer can be used on any smooth, straight run of duct and can work with vertical and overhead applications. Solid wall wire retainers are manufactured from black PVC.

Features and Benefits

- Effectively retains wires in duct when covers are removed.



Material Data	
Material	Polyvinylchloride (PVC)
Flammability	UL94 HB
Operating Temperature	+23°F to +185°F (-5°C to +85°C)

Article No.	Part No.	Type	Description	Color	Package Quantity
181-20201	SDWR2X20K2	SDWR2X20	Wire Retainer, Solid Style for 2" X 2" Duct	Black	50
181-00158	181-00158	SDWR4X20	Wire Retainer, Solid Style for 4" X 2" Duct	Black	10
181-00441	SDWR4X40P2	SDWR4X40	Wire Retainer, Solid Style for 4" X 4" Duct	Black	10

Use Part No. for ordering and Type for specification purposes.

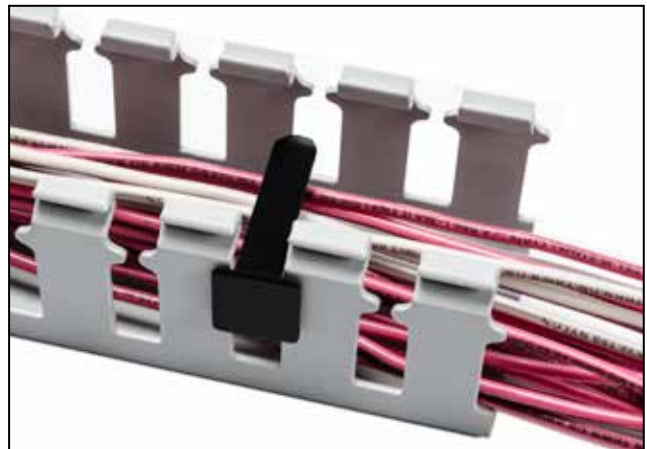
Slotted Wall Wire Retainers

Slotted wall wire retainers snap in from the outside of the duct, allowing for fast and easy installation and removal. Slotted wall wire retainers are manufactured from black nylon 6/6.

Features and Benefits

- Retainer spans approximately 90% over the duct opening for effective wire management.

Material Data	
Material	Polyamide 6 (PA6)
Flammability	UL94 HB
Operating Temperature	+23°F to +185°F (-5°C to +85°C)



Article No.	Part No.	Type	Description	Color	Package Quantity
181-20021	SLWR20C2	SLWR20	Wire Retainer, Slotted Style for 2" Duct	Black	100
181-30031	SLWR30C2	SLWR30	Wire Retainer, Slotted Style for 3" Duct	Black	100
181-40041	SLWR40C2	SLWR40	Wire Retainer, Slotted Style for 4" Duct	Black	100

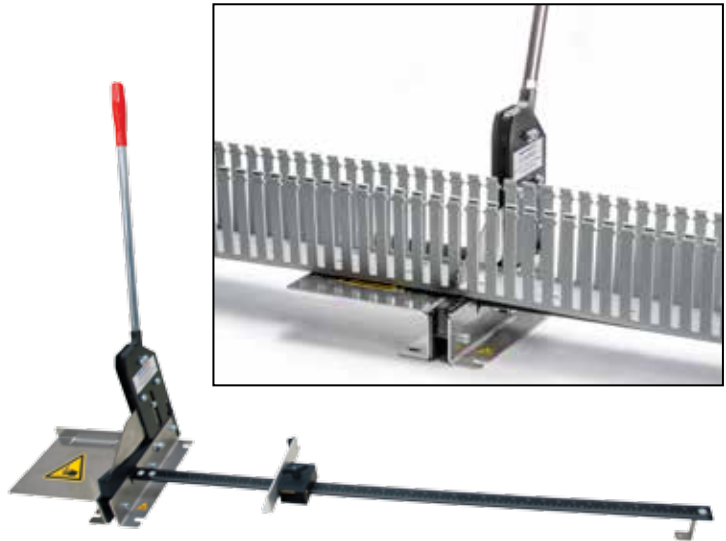
Use Part No. for ordering and Type for specification purposes.

Bench Mounted Wiring Duct Cutting Tool & Accessories

The HellermannTyton bench mounted wiring duct cutting tool is used to accurately measure and cut all HellermannTyton slotted and high density slotted wiring duct, solid dividers and covers.

Features and Benefits

- Hand lever is ergonomically designed to reduce user fatigue.
- Measuring guide incorporates both imperial and metric values which eliminates the need for secondary measurement devices.
- Long lasting, hardened blade produces burr-free edges and improves productivity by eliminating the need for filing the edges after cutting.
- Includes replacement blade and safety guide to ensure longevity, safety and proper use of the tool (replacements for both can also be purchased separately).



Article No.	Part No.	Description	Package Quantity
904-00295	904-00295	Wiring Duct Cutting Tool	1
904-00296	904-00296	Wiring Duct Cutting Tool Replacement Blade	1
904-00297	904-00297	Wiring Duct Safety Guide	1

Duct Notching Tool

The HellermannTyton duct notching tool is designed for use with HellermannTyton slotted wall and high density slotted Pro-Duct wiring duct. This hand held tool features plastic grips for easy handling and allows users to notch a duct sidewall section down to the very base for finger and sidewall removal.

Features and Benefits

- Plastic grips for easy tool handling.
- Designed for one-handed operation.



Article No.	Part No.	Type	Description	Package Quantity
182-00002	TDNT	TDNT	Wiring Duct Notching Tool	1

Wiring Duct Accessories

Panel Rivets and Tool

HellermannTyton panel rivets are one piece drive rivets that provide a fast, economic means of affixing wiring duct. The rivet is inserted into a 3/16" pre-punched hole and the pin is driven into the base, thereby expanding the rivet legs and locking the duct and sub-panel in place. The panel thickness (including the duct thickness) should be a maximum of 3/16".

Features and Benefits

- Panel rivets are made with nylon material to hold duct securely to the panel without corroding, ensuring longevity.
- Panel rivets can be easily inserted with use of the extended shaft panel rivet tool.
- Ergonomic design of the tool ensures effortless use when inserting rivets into deep channels or locations difficult to access.



Material Data	
Material	Polyamide 6.6 (PA66)
Flammability	UL94 HB
Operating Temperature	-40°F to +176°F (-40°C to +80°C)

Article No.	Part No.	Type	Description	Color	Package Quantity
181-00139	PR1M4	PR1	Panel Rivets	Natural	1,000
182-00001	PRT1	PRT1	Panel Rivet Tool	Yellow	1

Use Part No. for ordering and Type for specification purposes.

Corner Strips and Straight Connectors

HellermannTyton offers wiring duct connectors to secure and join duct sections in longer runs and at corners. Corner strips are used for a rounded and smoother transition between sections of wiring duct meeting at a right angle. Straight connectors join straight duct runs to cover and protect wires. Straight connectors, supplied in 6-foot lengths, can be used with all sizes of duct and can be cut to fit duct sidewall heights.



Features and Benefits

- Easily cut to size for the appropriate duct size.
- Provides a smooth transition between sections of duct.

Material Data	
Material	Polyvinylchloride (PVC)
Flammability	Self-extinguishing
Operating Temperature	+122°F (+50°C)

Article No.	Part No.	Type	Description	Color	Package Quantity
181-00001	181-00001	CSG	Wiring Duct Corner Strip Connectors	Gray	120
181-00002	181-00002	CSW	Wiring Duct Corner Strip Connectors	White	120
181-00003	181-00003	SCG	Straight Connectors made to connect straight duct	Gray	120
181-00004	181-00004	SCW	Straight Connectors made to connect straight duct	White	120

Use Part No. for ordering and Type for specification purposes.

Wiring Duct Dividers

HellermannTyton solid wall dividers can be securely mounted into all types of HellermannTyton wiring duct to separate high and low voltage wires and cables to reduce interference. The dividers simply snap or slide into the specially designed mount, instantly creating multiple channels within a single duct size.



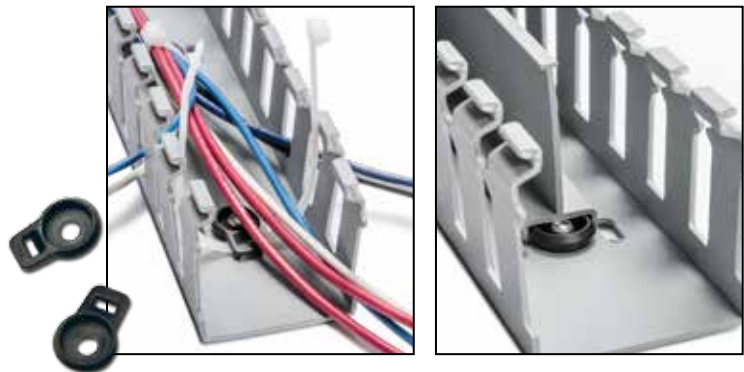
Material Data	
Material	Polyvinylchloride (PVC)
Flammability	Self-extinguishing
Operating Temperature	+122°F (+50°C)

Article No.	Part No.	Type	Width		Height		Description	Color	Package Quantity
			in.	(mm)	in.	(mm)			ft.
181-00305	181-00305	DV1	0.75	(19.05)	0.90	(22.9)	Wiring Duct Divider, 1" High	White	120
181-00306	181-00306	DV1.5	0.75	(19.05)	1.40	(35.6)	Wiring Duct Divider, 1.5" High	White	120
181-00307	181-00307	DV2	0.75	(19.05)	1.85	(47.0)	Wiring Duct Divider, 2" High	White	120
181-00308	181-00308	DV3	0.77	(19.56)	2.85	(72.4)	Wiring Duct Divider, 3" High	White	120
181-00309	181-00309	DV4	0.77	(19.56)	3.85	(97.8)	Wiring Duct Divider, 4" High	White	120
181-00300	181-00300	DV1	0.75	(19.05)	0.90	(22.9)	Wiring Duct Divider, 1" High	Gray	120
181-00301	181-00301	DV1.5	0.75	(19.05)	1.40	(35.6)	Wiring Duct Divider, 1.5" High	Gray	120
181-00302	181-00302	DV2	0.75	(19.05)	1.85	(47.0)	Wiring Duct Divider, 2" High	Gray	120
181-00303	181-00303	DV3	0.77	(19.56)	2.85	(72.4)	Wiring Duct Divider, 3" High	Gray	120
181-00304	181-00304	DV4	0.77	(19.56)	3.85	(97.8)	Wiring Duct Divider, 4" High	Gray	120

Dimensions are approximate and subject to technical changes. Use Part No. for ordering and Type for specification purposes. Sold in 6-foot lengths.

Universal Wiring Duct Mount

The HellermannTyton universal wiring duct mount is a multi-purpose mount that secures duct dividers or secures wire bundles inside the duct with a cable tie. The mount can be installed with duct panel rivets or mechanical fasteners. The bottom of the mount has locator tabs that fit into the duct mounting holes, preventing the mount from spinning during installation.



Features and Benefits

- Tabs align the mount for easy divider installation.
- Top of the mount creates separation between wires and the fastener head which protects the wires from abrasion.
- When used as a duct divider mount, the divider snaps or slides over the mount resulting in a quick, secure installation.
- When used as a wire bundle mount, simply slide the cable tie through any of the four-way tie slots to secure the bundle and prevent the cables from falling outside during installation and cover removal.

Material Data	
Material	Polyamide 6.6 V0 (PA66V0)
Flammability	UL94 V0
Operating Temperature	-40°F to +230°F (-40°C to +110°C)

Article No.	Part No.	Type	Color	Package Quantity
181-00684	181-00684	DVM	Black	100

Use Part No. for ordering and Type for specification purposes.

Wiring Duct Accessories

Wiring Duct Covers

HellermannTyton Pro-Duct wiring duct covers are sold separately and are interchangeable among the 3 styles of duct (solid, slotted and high density). Manufactured from high impact, rigid PVC, Pro-Duct covers come in standard colors of white, gray and black. Wiring duct covers are available in 6-foot lengths.

Features and Benefits

- A temporary film is applied to the covers to protect against scratches and is writable for identification during installation.
- Cover is flush with the side of the duct for increased wire capacity and allows for tight, side-by-side duct placement.
- Covers are provided with a non-slip lining, which insures the covers remain in place during vibration, yet easily snap on and off.



Material Data	
Material	Polyvinylchloride (PVC)
Flammability	Self-extinguishing
Operating Temperature	+122°F (+50°C)



Article No.	Part No.	Type	Width		Color	Package Quantity
			in.	(mm)		ft.
.5" wide covers						
181-00443	181-00443	TC.5	0.64	(16.3)	White	120
181-90051	181-90051	TC.5	0.64	(16.3)	Gray	120
181-90050	181-90050	TC.5	0.64	(16.3)	Black	120
.75" wide covers						
181-90751	181-90751	TC.75	0.89	(22.6)	White	120
181-90750	181-90750	TC.75	0.89	(22.6)	Gray	120
181-00445	181-00445	TC.75	0.89	(22.6)	Black	120
1" wide covers						
181-91008	181-91008	TC1	1.00	(25.4)	White	120
181-91004	181-91004	TC1	1.00	(25.4)	Gray	120
181-91000	181-91000	TC1	1.00	(25.4)	Black	120
1.5" wide covers						
181-91510	181-91510	TC1.5	1.50	(38.1)	White	120
181-91507	181-91507	TC1.5	1.50	(38.1)	Gray	120
181-91503	181-91503	TC1.5	1.50	(38.1)	Black	120
2" wide covers						
181-92011	181-92011	TC2	2.00	(50.8)	White	120
181-92005	181-92005	TC2	2.00	(50.8)	Gray	120
181-92001	181-92001	TC2	2.00	(50.8)	Black	120

Dimensions are approximate and subject to technical changes. Use Part No. for ordering and Type for specification purposes. Sold in 6-foot lengths.

Wiring Duct Covers *Continued*

Article No.	Part No.	Type	Width		Color	Package Quantity
			in.	(mm)		ft.
2.5" wide covers						
181-00262	181-00262	TC2.5	2.5	(63.5)	White	120
181-00260	181-00260	TC2.5	2.5	(63.5)	Gray	120
181-00311	181-00311	TC2.5	2.5	(63.5)	Black	120
3" wide covers						
181-93011	181-93011	TC3	3.0	(76.2)	White	120
181-93008	181-93008	TC3	3.0	(76.2)	Gray	120
181-93003	181-93003	TC3	3.0	(76.2)	Black	120
4" wide covers						
181-94014	181-94014	TC4	4.0	(101.6)	White	120
181-94009	181-94009	TC4	4.0	(101.6)	Gray	120
181-94003	181-94003	TC4	4.0	(101.6)	Black	120
6" wide covers						
181-96002	181-96002	TC6	6.0	(152.4)	White	60
181-96000	181-96000	TC6	6.0	(152.4)	Gray	60
181-00448	181-00448	TC6	6.0	(152.4)	Black	60
8" wide covers						
181-00451	181-00451	TC8	8.0	(203.2)	White	60
181-00450	181-00450	TC8	8.0	(203.2)	Gray	60
181-00449	181-00449	TC8	8.0	(203.2)	Black	60

Dimensions are approximate and subject to technical changes. Use Part No. for ordering and Type for specification purposes. Sold in 6-foot lengths.

Wire Management Bracket Hinge

Wire management bracket hinges allow for an easy open and close feature, much like a door, without entire removal of the cover. This prevents the misplacement of covers as well as helps in the protection of wires and cables.

Features and Benefits

- The hinge snaps easily onto the cover and channel allowing quick assembly.
- Once assembled, the hinge permits the cover to open like a door, protecting the wires and cables.



Material Data	
Material	Polyamide 6 (PA6)
Flammability	UL94 HB
Operating Temperature	-40°F to +230°F (-40°C to +110°C)

Article No.	Part No.	Type	Description	Package Quantity
854-09272	WMBH	WMBH	Wire Management Bracket Hinges	25

Wiring Duct

Solid Wall Wiring Duct

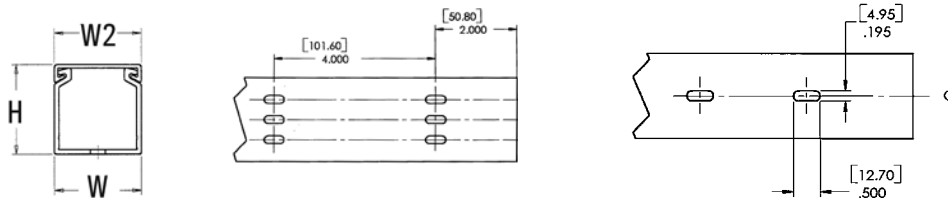
HellermannTyton Pro-Duct solid wall wiring duct efficiently routes and protects wires and cables. Solid wall wiring duct is designed for straight wire runs where breakouts are not required. Pro-Duct solid wall wiring duct is manufactured from high-impact, rigid PVC, and is available in 6-foot lengths in standard colors of white, gray and black.

Features and Benefits

- Solid wall construction provides excellent coverage to keep wires and cables clean.
- Durable material protects wires and cables from damage, with long-lasting performance.
- Available standard color options to complement or contrast in light and dark environments.
- Optional covers enhance protection and appearance.



Material Data	
Material	Polyvinylchloride (PVC)
Flammability	Self-extinguishing
Operating Temperature	+122°F (+50°C)



Article No.	Part No.	Type	Width		Height		Width W2		Description	Color	Package Quantity
			in.	(mm)	in.	(mm)	in.	(mm)			
.5" X .5" (12.7 X 12.7) Nominal Duct Size											
181-00453	181-00453	SD.5X.5	0.50	(12.7)	0.55	(14.0)	0.76	(19.3)	Non-Adhesive	White	120
181-00525	181-00525	SDA.5X.5	0.50	(12.7)	0.55	(14.0)	0.76	(19.3)	Adhesive	White	120
181-05501	181-05501	SD.5X.5	0.50	(12.7)	0.55	(14.0)	0.76	(19.3)	Non-Adhesive	Gray	120
181-00524	181-00524	SDA.5X.5	0.50	(12.7)	0.55	(14.0)	0.76	(19.3)	Adhesive	Gray	120
181-05500	181-05500	SD.5X.5	0.50	(12.7)	0.55	(14.0)	0.76	(19.3)	Non-Adhesive	Black	120
181-00481	181-00481	SDA.5X.5	0.50	(12.7)	0.55	(14.0)	0.76	(19.3)	Adhesive	Black	120
.5" X 1" (12.7 X 25.4) Nominal Duct Size											
181-00143	181-00143	SD.5X1	0.50	(12.7)	1.05	(26.7)	0.76	(19.3)	Non-Adhesive	White	120
181-00528	181-00528	SDA.5X1	0.50	(12.7)	1.05	(26.7)	0.76	(19.3)	Adhesive	White	120
181-00145	181-00145	SD.5X1	0.50	(12.7)	1.05	(26.7)	0.76	(19.3)	Non-Adhesive	Gray	120
181-00526	181-00526	SDA.5X1	0.50	(12.7)	1.05	(26.7)	0.76	(19.3)	Adhesive	Gray	120
181-00144	181-00144	SD.5X1	0.50	(12.7)	1.05	(26.7)	0.76	(19.3)	Non-Adhesive	Black	120
181-00527	181-00527	SDA.5X1	0.50	(12.7)	1.05	(26.7)	0.76	(19.3)	Adhesive	Black	120
.75" X .75" (19.1 X 19.1) Nominal Duct Size											
181-00456	181-00456	SD.75X.75	0.75	(19.1)	0.80	(20.3)	1.00	(25.4)	Non-Adhesive	White	120
181-00142	181-00142	SDA.75X.75	0.75	(19.1)	0.80	(20.3)	1.00	(25.4)	Adhesive	White	120
181-00455	181-00455	SD.75X.75	0.75	(19.1)	0.80	(20.3)	1.00	(25.4)	Non-Adhesive	Gray	120
181-00140	181-00140	SDA.75X.75	0.75	(19.1)	0.80	(20.3)	1.00	(25.4)	Adhesive	Gray	120
181-00454	181-00454	SD.75X.75	0.75	(19.1)	0.80	(20.3)	1.00	(25.4)	Non-Adhesive	Black	120
181-00141	181-00141	SDA.75X.75	0.75	(19.1)	0.80	(20.3)	1.00	(25.4)	Adhesive	Black	120

Dimensions are approximate and subject to technical changes. Use Part No. for ordering and Type for specification purposes. Sold in 6-foot lengths.

Solid Wall Wiring Duct *Continued*

Article No.	Part No.	Type	Width		Height		Width W2		Description	Color	Package Quantity ft.
			in.	(mm)	in.	(mm)	in.	(mm)			
1" X 1" (25.4 X 25.4) Nominal Duct Size											
181-11005	181-11005	SD1X1	1.0	(25.4)	1.06	(26.9)	1.0	(25.4)	Non-Adhesive	White	120
181-11008	181-11008	SDA1X1	1.0	(25.4)	1.06	(26.9)	1.0	(25.4)	Adhesive	White	120
181-11002	181-11002	SD1X1	1.0	(25.4)	1.06	(26.9)	1.0	(25.4)	Non-Adhesive	Gray	120
181-00493	181-00493	SDA1X1	1.0	(25.4)	1.06	(26.9)	1.0	(25.4)	Adhesive	Gray	120
181-11000	181-11000	SD1X1	1.0	(25.4)	1.06	(26.9)	1.0	(25.4)	Non-Adhesive	Black	120
181-11006	181-11006	SDA1X1	1.0	(25.4)	1.06	(26.9)	1.0	(25.4)	Adhesive	Black	120
1" X 1.5" (25.4 X 38.1) Nominal Duct Size											
181-11502	181-11502	SD1X1.5	1.0	(25.4)	1.57	(39.9)	1.0	(25.4)	Non-Adhesive	White	120
181-00491	181-00491	SDA1X1.5	1.0	(25.4)	1.57	(39.9)	1.0	(25.4)	Adhesive	White	120
181-11501	181-11501	SD1X1.5	1.0	(25.4)	1.57	(39.9)	1.0	(25.4)	Non-Adhesive	Gray	120
181-00490	181-00490	SDA1X1.5	1.0	(25.4)	1.57	(39.9)	1.0	(25.4)	Adhesive	Gray	120
181-00457	181-00457	SD1X1.5	1.0	(25.4)	1.57	(39.9)	1.0	(25.4)	Non-Adhesive	Black	120
181-00529	181-00529	SDA1X1.5	1.0	(25.4)	1.57	(39.9)	1.0	(25.4)	Adhesive	Black	120
1" X 2" (25.4 X 50.8) Nominal Duct Size											
181-12002	181-12002	SD1X2	1.0	(25.4)	2.07	(52.6)	1.0	(25.4)	Non-Adhesive	White	120
181-00495	181-00495	SDA1X2	1.0	(25.4)	2.07	(52.6)	1.0	(25.4)	Adhesive	White	120
181-12001	181-12001	SD1X2	1.0	(25.4)	2.07	(52.6)	1.0	(25.4)	Non-Adhesive	Gray	120
181-00494	181-00494	SDA1X2	1.0	(25.4)	2.07	(52.6)	1.0	(25.4)	Adhesive	Gray	120
181-00458	181-00458	SD1X2	1.0	(25.4)	2.07	(52.6)	1.0	(25.4)	Non-Adhesive	Black	120
181-00530	181-00530	SDA1X2	1.0	(25.4)	2.07	(52.6)	1.0	(25.4)	Adhesive	Black	120
1" X 3" (25.4 X 76.2) Nominal Duct Size											
181-13001	181-13001	SD1X3	1.0	(25.4)	3.07	(77.9)	1.0	(25.4)	Non-Adhesive	White	120
181-00496	181-00496	SDA1X3	1.0	(25.4)	3.07	(77.9)	1.0	(25.4)	Adhesive	White	120
181-00136	181-00136	SD1X3	1.0	(25.4)	3.07	(77.9)	1.0	(25.4)	Non-Adhesive	Gray	120
181-00671	181-00671	SDA1X3	1.0	(25.4)	3.07	(77.9)	1.0	(25.4)	Adhesive	Gray	120
181-00459	181-00459	SD1X3	1.0	(25.4)	3.07	(77.9)	1.0	(25.4)	Non-Adhesive	Black	120
181-00531	181-00531	SDA1X3	1.0	(25.4)	3.07	(77.9)	1.0	(25.4)	Adhesive	Black	120
1" X 4" (25.4 X 101.6) Nominal Duct Size											
181-14000	181-14000	SD1X4	1.0	(25.4)	4.07	(103.4)	1.0	(25.4)	Non-Adhesive	White	120
181-00497	181-00497	SDA1X4	1.0	(25.4)	4.07	(103.4)	1.0	(25.4)	Adhesive	White	120
181-00461	181-00461	SD1X4	1.0	(25.4)	4.07	(103.4)	1.0	(25.4)	Non-Adhesive	Gray	120
181-00533	181-00533	SDA1X4	1.0	(25.4)	4.07	(103.4)	1.0	(25.4)	Adhesive	Gray	120
181-00460	181-00460	SD1X4	1.0	(25.4)	4.07	(103.4)	1.0	(25.4)	Non-Adhesive	Black	120
181-00532	181-00532	SDA1X4	1.0	(25.4)	4.07	(103.4)	1.0	(25.4)	Adhesive	Black	120
1.5" X 1" (38.1 X 25.4) Nominal Duct Size											
181-15102	181-15102	SD1.5X1	1.5	(38.1)	1.06	(26.9)	1.5	(38.1)	Non-Adhesive	White	120
181-00486	181-00486	SDA1.5X1	1.5	(38.1)	1.06	(26.9)	1.5	(38.1)	Adhesive	White	120
181-15101	181-15101	SD1.5X1	1.5	(38.1)	1.06	(26.9)	1.5	(38.1)	Non-Adhesive	Gray	120
181-00175	181-00175	SDA1.5X1	1.5	(38.1)	1.06	(26.9)	1.5	(38.1)	Adhesive	Gray	120
181-15100	181-15100	SD1.5X1	1.5	(38.1)	1.06	(26.9)	1.5	(38.1)	Non-Adhesive	Black	120
181-00485	181-00485	SDA1.5X1	1.5	(38.1)	1.06	(26.9)	1.5	(38.1)	Adhesive	Black	120
1.5" X 1.5" (25.4 X 50.8) Nominal Duct Size											
181-15503	181-15503	SD1.5X1.5	1.5	(38.1)	1.57	(39.9)	1.5	(38.1)	Non-Adhesive	White	120
181-15504	181-15504	SDA1.5X1.5	1.5	(38.1)	1.57	(39.9)	1.5	(38.1)	Adhesive	White	120
181-15502	181-15502	SD1.5X1.5	1.5	(38.1)	1.57	(39.9)	1.5	(38.1)	Non-Adhesive	Gray	120
181-00483	181-00483	SDA1.5X1.5	1.5	(38.1)	1.57	(39.9)	1.5	(38.1)	Adhesive	Gray	120
181-15500	181-15500	SD1.5X1.5	1.5	(38.1)	1.57	(39.9)	1.5	(38.1)	Non-Adhesive	Black	120
181-00482	181-00482	SDA1.5X1.5	1.5	(38.1)	1.57	(39.9)	1.5	(38.1)	Adhesive	Black	120

Dimensions are approximate and subject to technical changes. Use Part No. for ordering and Type for specification purposes. Sold in 6-foot lengths.

Wiring Duct

Solid Wall Wiring Duct *Continued*

Article No.	Part No.	Type	Width		Height		Width W2		Description	Color	Package
			in.	(mm)	in.	(mm)	in.	(mm)			Quantity
ft.											
1.5" X 2" (38.1 X 50.8) Nominal Duct Size											
181-15202	181-15202	SD1.5X2	1.5	(38.1)	2.07	(52.6)	1.5	(38.1)	Non-Adhesive	White	120
181-00488	181-00488	SDA1.5X2	1.5	(38.1)	2.07	(52.6)	1.5	(38.1)	Adhesive	White	120
181-15201	181-15201	SD1.5X2	1.5	(38.1)	2.07	(52.6)	1.5	(38.1)	Non-Adhesive	Gray	120
181-00487	181-00487	SDA1.5X2	1.5	(38.1)	2.07	(52.6)	1.5	(38.1)	Adhesive	Gray	120
181-00462	181-00462	SD1.5X2	1.5	(38.1)	2.07	(52.6)	1.5	(38.1)	Non-Adhesive	Black	120
181-00534	181-00534	SDA1.5X2	1.5	(38.1)	2.07	(52.6)	1.5	(38.1)	Adhesive	Black	120
1.5" X 3" (38.1 X 76.2) Nominal Duct Size											
181-00464	181-00464	SD1.5X3	1.5	(38.1)	3.07	(77.9)	1.5	(38.1)	Non-Adhesive	White	120
181-00536	181-00536	SDA1.5X3	1.5	(38.1)	3.07	(77.9)	1.5	(38.1)	Adhesive	White	120
181-15300	181-15300	SD1.5X3	1.5	(38.1)	3.07	(77.9)	1.5	(38.1)	Non-Adhesive	Gray	120
181-00489	181-00489	SDA1.5X3	1.5	(38.1)	3.07	(77.9)	1.5	(38.1)	Adhesive	Gray	120
181-00463	181-00463	SD1.5X3	1.5	(38.1)	3.07	(77.9)	1.5	(38.1)	Non-Adhesive	Black	120
181-00535	181-00535	SDA1.5X3	1.5	(38.1)	3.07	(77.9)	1.5	(38.1)	Adhesive	Black	120
1.5" X 4" (38.1 X 101.6) Nominal Duct Size											
181-00467	181-00467	SD1.5X4	1.5	(38.1)	4.07	(103.4)	1.5	(38.1)	Non-Adhesive	White	120
181-00539	181-00539	SDA1.5X4	1.5	(38.1)	4.07	(103.4)	1.5	(38.1)	Adhesive	White	120
181-00574	181-00574	SD1.5X4	1.5	(38.1)	4.07	(103.4)	1.5	(38.1)	Non-Adhesive	Gray	120
181-00538	181-00538	SDA1.5X4	1.5	(38.1)	4.07	(103.4)	1.5	(38.1)	Adhesive	Gray	120
181-00465	181-00465	SD1.5X4	1.5	(38.1)	4.07	(103.4)	1.5	(38.1)	Non-Adhesive	Black	120
181-00537	181-00537	SDA1.5X4	1.5	(38.1)	4.07	(103.4)	1.5	(38.1)	Adhesive	Black	120
2" X 1" (50.8 X 25.4) Nominal Duct Size											
181-21003	181-21003	SD2X1	2.0	(50.8)	1.06	(26.9)	2.0	(50.8)	Non-Adhesive	White	120
181-00500	181-00500	SDA2X1	2.0	(50.8)	1.06	(26.9)	2.0	(50.8)	Adhesive	White	120
181-21001	181-21001	SD2X1	2.0	(50.8)	1.06	(26.9)	2.0	(50.8)	Non-Adhesive	Gray	120
181-00499	181-00499	SDA2X1	2.0	(50.8)	1.06	(26.9)	2.0	(50.8)	Adhesive	Gray	120
181-21000	181-21000	SD2X1	2.0	(50.8)	1.06	(26.9)	2.0	(50.8)	Non-Adhesive	Black	120
181-00498	181-00498	SDA2X1	2.0	(50.8)	1.06	(26.9)	2.0	(50.8)	Adhesive	Black	120
2" X 2" (50.8 X 50.8) Nominal Duct Size											
181-22013	181-22013	SD2X2	2.0	(50.8)	2.07	(52.6)	2.0	(50.8)	Non-Adhesive	White	120
181-22018	181-22018	SDA2X2	2.0	(50.8)	2.07	(52.6)	2.0	(50.8)	Adhesive	White	120
181-22008	181-22008	SD2X2	2.0	(50.8)	2.07	(52.6)	2.0	(50.8)	Non-Adhesive	Gray	120
181-22016	181-22016	SDA2X2	2.0	(50.8)	2.07	(52.6)	2.0	(50.8)	Adhesive	Gray	120
181-22005	181-22005	SD2X2	2.0	(50.8)	2.07	(52.6)	2.0	(50.8)	Non-Adhesive	Black	120
181-00501	181-00501	SDA2X2	2.0	(50.8)	2.07	(52.6)	2.0	(50.8)	Adhesive	Black	120
2" X 3" (50.8 X 76.2) Nominal Duct Size											
181-23002	181-23002	SD2X3	2.0	(50.8)	3.07	(77.9)	2.0	(50.8)	Non-Adhesive	White	120
181-00504	181-00504	SDA2X3	2.0	(50.8)	3.07	(77.9)	2.0	(50.8)	Adhesive	White	120
181-23001	181-23001	SD2X3	2.0	(50.8)	3.07	(77.9)	2.0	(50.8)	Non-Adhesive	Gray	120
181-00503	181-00503	SDA2X3	2.0	(50.8)	3.07	(77.9)	2.0	(50.8)	Adhesive	Gray	120
181-00468	181-00468	SD2X3	2.0	(50.8)	3.07	(77.9)	2.0	(50.8)	Non-Adhesive	Black	120
181-00540	181-00540	SDA2X3	2.0	(50.8)	3.07	(77.9)	2.0	(50.8)	Adhesive	Black	120
2" X 4" (50.8 X 101.6) Nominal Duct Size											
181-24002	181-24002	SD2X4	2.0	(50.8)	4.07	(103.4)	2.0	(50.8)	Non-Adhesive	White	120
181-00506	181-00506	SDA2X4	2.0	(50.8)	4.07	(103.4)	2.0	(50.8)	Adhesive	White	120
181-24000	181-24000	SD2X4	2.0	(50.8)	4.07	(103.4)	2.0	(50.8)	Non-Adhesive	Gray	120
181-00505	181-00505	SDA2X4	2.0	(50.8)	4.07	(103.4)	2.0	(50.8)	Adhesive	Gray	120
181-00469	181-00469	SD2X4	2.0	(50.8)	4.07	(103.4)	2.0	(50.8)	Non-Adhesive	Black	120
181-00541	181-00541	SDA2X4	2.0	(50.8)	4.07	(103.4)	2.0	(50.8)	Adhesive	Black	120

Dimensions are approximate and subject to technical changes. Use Part No. for ordering and Type for specification purposes. Sold in 6-foot lengths.

Solid Wall Wiring Duct *Continued*

Article No.	Part No.	Type	Width		Height		Width W2		Description	Color	Package Quantity ft.
			in.	(mm)	in.	(mm)	in.	(mm)			
2" X 5" (50.8 X 127.0) Nominal Duct Size											
181-00248	181-00248	SD2X5	2.0	(50.8)	5.07	(128.8)	2.0	(50.8)	Non-Adhesive	White	120
181-00250	181-00250	SDA2X5	2.0	(50.8)	5.07	(128.8)	2.0	(50.8)	Adhesive	White	120
181-00244	181-00244	SD2X5	2.0	(50.8)	5.07	(128.8)	2.0	(50.8)	Non-Adhesive	Gray	120
181-00246	181-00246	SDA2X5	2.0	(50.8)	5.07	(128.8)	2.0	(50.8)	Adhesive	Gray	120
181-00312	181-00312	SD2X5	2.0	(50.8)	5.07	(128.8)	2.0	(50.8)	Non-Adhesive	Black	120
181-00313	181-00313	SDA2X5	2.0	(50.8)	5.07	(128.8)	2.0	(50.8)	Adhesive	Black	120
2.5" X 3" (63.5 X 76.2) Nominal Duct Size											
181-00224	181-00224	SD2.5X3	2.5	(63.5)	3.07	(77.9)	2.5	(63.5)	Non-Adhesive	White	120
181-00226	181-00226	SDA2.5X3	2.5	(63.5)	3.07	(77.9)	2.5	(63.5)	Adhesive	White	120
181-00220	181-00220	SD2.5X3	2.5	(63.5)	3.07	(77.9)	2.5	(63.5)	Non-Adhesive	Gray	120
181-00222	181-00222	SDA2.5X3	2.5	(63.5)	3.07	(77.9)	2.5	(63.5)	Adhesive	Gray	120
181-00314	181-00314	SD2.5X3	2.5	(63.5)	3.07	(77.9)	2.5	(63.5)	Non-Adhesive	Black	120
181-00315	181-00315	SDA2.5X3	2.5	(63.5)	3.07	(77.9)	2.5	(63.5)	Adhesive	Black	120
3" X 1" (76.2 X 25.4) Nominal Duct Size											
181-31002	181-31002	SD3X1	3.0	(76.2)	1.06	(26.9)	3.0	(76.2)	Non-Adhesive	White	120
181-00508	181-00508	SDA3X1	3.0	(76.2)	1.06	(26.9)	3.0	(76.2)	Adhesive	White	120
181-31001	181-31001	SD3X1	3.0	(76.2)	1.06	(26.9)	3.0	(76.2)	Non-Adhesive	Gray	120
181-00507	181-00507	SDA3X1	3.0	(76.2)	1.06	(26.9)	3.0	(76.2)	Adhesive	Gray	120
181-00470	181-00470	SD3X1	3.0	(76.2)	1.06	(26.9)	3.0	(76.2)	Non-Adhesive	Black	120
181-00672	181-00672	SDA3X1	3.0	(76.2)	1.06	(26.9)	3.0	(76.2)	Adhesive	Black	120
3" X 2" (76.2 X 50.8) Nominal Duct Size											
181-32003	181-32003	SD3X2	3.0	(76.2)	2.07	(52.6)	3.0	(76.2)	Non-Adhesive	White	120
181-00510	181-00510	SDA3X2	3.0	(76.2)	2.07	(52.6)	3.0	(76.2)	Adhesive	White	120
181-32002	181-32002	SD3X2	3.0	(76.2)	2.07	(52.6)	3.0	(76.2)	Non-Adhesive	Gray	120
181-00509	181-00509	SDA3X2	3.0	(76.2)	2.07	(52.6)	3.0	(76.2)	Adhesive	Gray	120
181-00471	181-00471	SD3X2	3.0	(76.2)	2.07	(52.6)	3.0	(76.2)	Non-Adhesive	Black	120
181-00542	181-00542	SDA3X2	3.0	(76.2)	2.07	(52.6)	3.0	(76.2)	Adhesive	Black	120
3" X 3" (76.2 X 76.2) Nominal Duct Size											
181-33006	181-33006	SD3X3	3.0	(76.2)	3.07	(77.9)	3.0	(76.2)	Non-Adhesive	White	120
181-00513	181-00513	SDA3X3	3.0	(76.2)	3.07	(77.9)	3.0	(76.2)	Adhesive	White	120
181-33004	181-33004	SD3X3	3.0	(76.2)	3.07	(77.9)	3.0	(76.2)	Non-Adhesive	Gray	120
181-00512	181-00512	SDA3X3	3.0	(76.2)	3.07	(77.9)	3.0	(76.2)	Adhesive	Gray	120
181-33000	181-33000	SD3X3	3.0	(76.2)	3.07	(77.9)	3.0	(76.2)	Non-Adhesive	Black	120
181-00511	181-00511	SDA3X3	3.0	(76.2)	3.07	(77.9)	3.0	(76.2)	Adhesive	Black	120
3" X 4" (76.2 X 101.6) Nominal Duct Size											
181-34001	181-34001	SD3X4	3.0	(76.2)	4.07	(103.4)	3.0	(76.2)	Non-Adhesive	White	120
181-00515	181-00515	SDA3X4	3.0	(76.2)	4.07	(103.4)	3.0	(76.2)	Adhesive	White	120
181-34000	181-34000	SD3X4	3.0	(76.2)	4.07	(103.4)	3.0	(76.2)	Non-Adhesive	Gray	120
181-00514	181-00514	SDA3X4	3.0	(76.2)	4.07	(103.4)	3.0	(76.2)	Adhesive	Gray	120
181-00472	181-00472	SD3X4	3.0	(76.2)	4.07	(103.4)	3.0	(76.2)	Non-Adhesive	Black	120
181-00147	181-00147	SDA3X4	3.0	(76.2)	4.07	(103.4)	3.0	(76.2)	Adhesive	Black	120
3" X 5" (76.2 X 127.0) Nominal Duct Size											
181-00475	181-00475	SD3X5	3.0	(76.2)	5.06	(128.5)	3.0	(76.2)	Non-Adhesive	White	120
181-00544	181-00544	SDA3X5	3.0	(76.2)	5.06	(128.5)	3.0	(76.2)	Adhesive	White	120
181-00474	181-00474	SD3X5	3.0	(76.2)	5.06	(128.5)	3.0	(76.2)	Non-Adhesive	Gray	120
181-00148	181-00148	SDA3X5	3.0	(76.2)	5.06	(128.5)	3.0	(76.2)	Adhesive	Gray	120
181-00473	181-00473	SD3X5	3.0	(76.2)	5.06	(128.5)	3.0	(76.2)	Non-Adhesive	Black	120
181-00543	181-00543	SDA3X5	3.0	(76.2)	5.06	(128.5)	3.0	(76.2)	Adhesive	Black	120

Dimensions are approximate and subject to technical changes. Use Part No. for ordering and Type for specification purposes. Sold in 6-foot lengths.

Wiring Duct

Solid Wall Wiring Duct *Continued*

Article No.	Part No.	Type	Width		Height		Width W2		Description	Color	Package
			in.	(mm)	in.	(mm)	in.	(mm)			Quantity
4" X 2" (101.6 X 50.8) Nominal Duct Size											
181-42004	181-42004	SD4X2	4.0	(101.6)	2.07	(52.6)	4.0	(101.6)	Non-Adhesive	White	120
181-00517	181-00517	SDA4X2	4.0	(101.6)	2.07	(52.6)	4.0	(101.6)	Adhesive	White	120
181-42002	181-42002	SD4X2	4.0	(101.6)	2.07	(52.6)	4.0	(101.6)	Non-Adhesive	Gray	120
181-00516	181-00516	SDA4X2	4.0	(101.6)	2.07	(52.6)	4.0	(101.6)	Adhesive	Gray	120
181-00476	181-00476	SD4X2	4.0	(101.6)	2.07	(52.6)	4.0	(101.6)	Non-Adhesive	Black	120
181-00545	181-00545	SDA4X2	4.0	(101.6)	2.07	(52.6)	4.0	(101.6)	Adhesive	Black	120
4" X 3" (101.6 X 76.2) Nominal Duct Size											
181-43002	181-43002	SD4X3	4.0	(101.6)	3.07	(77.9)	4.0	(101.6)	Non-Adhesive	White	120
181-00519	181-00519	SDA4X3	4.0	(101.6)	3.07	(77.9)	4.0	(101.6)	Adhesive	White	120
181-43001	181-43001	SD4X3	4.0	(101.6)	3.07	(77.9)	4.0	(101.6)	Non-Adhesive	Gray	120
181-00518	181-00518	SDA4X3	4.0	(101.6)	3.07	(77.9)	4.0	(101.6)	Adhesive	Gray	120
181-00477	181-00477	SD4X3	4.0	(101.6)	3.07	(77.9)	4.0	(101.6)	Non-Adhesive	Black	120
181-00546	181-00546	SDA4X3	4.0	(101.6)	3.07	(77.9)	4.0	(101.6)	Adhesive	Black	120
4" X 4" (101.6 X 101.6) Nominal Duct Size											
181-44015	181-44015	SD4X4	4.0	(101.6)	4.07	(103.4)	4.0	(101.6)	Non-Adhesive	White	120
181-00521	181-00521	SDA4X4	4.0	(101.6)	4.07	(103.4)	4.0	(101.6)	Adhesive	White	120
181-44009	181-44009	SD4X4	4.0	(101.6)	4.07	(103.4)	4.0	(101.6)	Non-Adhesive	Gray	120
181-44018	181-44018	SDA4X4	4.0	(101.6)	4.07	(103.4)	4.0	(101.6)	Adhesive	Gray	120
181-44006	181-44006	SD4X4	4.0	(101.6)	4.07	(103.4)	4.0	(101.6)	Non-Adhesive	Black	120
181-00520	181-00520	SDA4X4	4.0	(101.6)	4.07	(103.4)	4.0	(101.6)	Adhesive	Black	120
4" X 5" (101.6 X 127) Nominal Duct Size											
181-45001	181-45001	SD4X5	4.0	(101.6)	5.07	(128.8)	4.0	(101.6)	Non-Adhesive	White	60
181-00523	181-00523	SDA4X5	4.0	(101.6)	5.07	(128.8)	4.0	(101.6)	Adhesive	White	60
181-45000	181-45000	SD4X5	4.0	(101.6)	5.07	(128.8)	4.0	(101.6)	Non-Adhesive	Gray	60
181-00522	181-00522	SDA4X5	4.0	(101.6)	5.07	(128.8)	4.0	(101.6)	Adhesive	Gray	60
181-00137	181-00137	SD4X5	4.0	(101.6)	5.07	(128.8)	4.0	(101.6)	Non-Adhesive	Black	60
181-00547	181-00547	SDA4X5	4.0	(101.6)	5.07	(128.8)	4.0	(101.6)	Adhesive	Black	60
6" X 4" (152.4 X 101.6) Nominal Duct Size											
181-64001	181-64001	SD6X4	6.0	(152.4)	4.07	(103.4)	6.0	(152.4)	Non-Adhesive	White	60
181-64000	181-64000	SD6X4	6.0	(152.4)	4.07	(103.4)	6.0	(152.4)	Non-Adhesive	Gray	60
181-00479	181-00479	SD6X4	6.0	(152.4)	4.07	(103.4)	6.0	(152.4)	Non-Adhesive	Black	60
8" X 4" (203.2 X 101.6) Nominal Duct Size											
181-84007	181-84007	SD8X4	8.0	(203.2)	4.07	(103.4)	8.0	(203.2)	Non-Adhesive	White	30
181-84004	181-84004	SD8X4	8.0	(203.2)	4.07	(103.4)	8.0	(203.2)	Non-Adhesive	Gray	30
181-00480	181-00480	SD8X4	8.0	(203.2)	4.07	(103.4)	8.0	(203.2)	Non-Adhesive	Black	30

Dimensions are approximate and subject to technical changes. Use Part No. for ordering and Type for specification purposes. Sold in 6-foot lengths.

Slotted Wall Wiring Duct

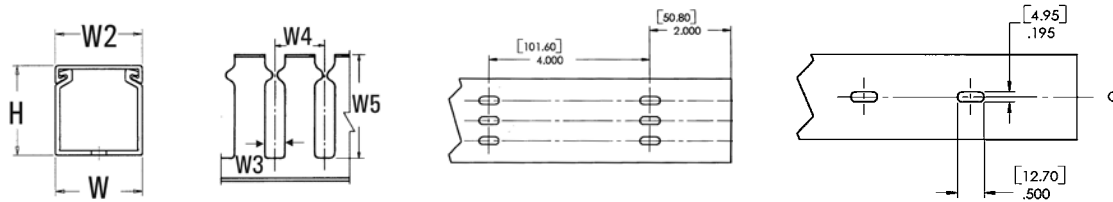
Pro-Duct slotted wall wiring duct features break-away fingers which provide additional access for wire leads. Each section of the duct is provided with two score lines. The upper score line is used to break away fingers when a wider opening is required. The lower score line allows the sidewall to be smoothly cut for joints and "Ts".

Features and Benefits

- Strong fingers prevent unwanted breaking.
- Fingers are easily deflected outward, allowing ready positioning of the wires within the slotted wall duct.
- Restricted opening prevents unintended removal of wires and permits any individual wire to be traced without disconnection.



Material Data	
Material	Polyvinylchloride (PVC)
Flammability	Self-extinguishing
Operating Temperature	+122°F (+50°C)



Article No.	Part No.	Type	Width (W)		Height (H)		Width (W2)		Width (W3)		Width (W4)		Width (W5)		Description	Color	Pkg Qty ft.
			in.	(mm)	in.	(mm)	in.	(mm)	in.	(mm)	in.	(mm)	in.	(mm)			
1" X 1" (25.4 X 25.4) Nominal Duct Size																	
181-11015	181-11015	SL1X1	1.0	(25.4)	1.06	(26.9)	1.0	(25.4)	0.4	(10.2)	1.0	(25.4)	0.75	(19.1)	Non-Adhesive	White	120
181-11021	181-11021	SLA1X1	1.0	(25.4)	1.06	(26.9)	1.0	(25.4)	0.4	(10.2)	1.0	(25.4)	0.75	(19.1)	Adhesive	White	120
181-11013	181-11013	SL1X1	1.0	(25.4)	1.06	(26.9)	1.0	(25.4)	0.4	(10.2)	1.0	(25.4)	0.75	(19.1)	Non-Adhesive	Gray	120
181-11019	181-11019	SLA1X1	1.0	(25.4)	1.06	(26.9)	1.0	(25.4)	0.4	(10.2)	1.0	(25.4)	0.75	(19.1)	Adhesive	Gray	120
181-11009	181-11009	SL1X1	1.0	(25.4)	1.06	(26.9)	1.0	(25.4)	0.4	(10.2)	1.0	(25.4)	0.75	(19.1)	Non-Adhesive	Black	120
181-11016	181-11016	SLA1X1	1.0	(25.4)	1.06	(26.9)	1.0	(25.4)	0.4	(10.2)	1.0	(25.4)	0.75	(19.1)	Adhesive	Black	120
1" X 1.5" (25.4 X 38.1) Nominal Duct Size																	
181-11507	181-11507	SL1X1.5	1.0	(25.4)	1.57	(39.9)	1.0	(25.4)	0.4	(10.2)	1.0	(25.4)	1.19	(30.2)	Non-Adhesive	White	120
181-11511	181-11511	SLA1X1.5	1.0	(25.4)	1.57	(39.9)	1.0	(25.4)	0.4	(10.2)	1.0	(25.4)	1.19	(30.2)	Adhesive	White	120
181-11505	181-11505	SL1X1.5	1.0	(25.4)	1.57	(39.9)	1.0	(25.4)	0.4	(10.2)	1.0	(25.4)	1.19	(30.2)	Non-Adhesive	Gray	120
181-11509	181-11509	SLA1X1.5	1.0	(25.4)	1.57	(39.9)	1.0	(25.4)	0.4	(10.2)	1.0	(25.4)	1.19	(30.2)	Adhesive	Gray	120
181-00552	181-00552	SL1X1.5	1.0	(25.4)	1.57	(39.9)	1.0	(25.4)	0.4	(10.2)	1.0	(25.4)	1.19	(30.2)	Non-Adhesive	Black	120
181-00564	181-00564	SLA1X1.5	1.0	(25.4)	1.57	(39.9)	1.0	(25.4)	0.4	(10.2)	1.0	(25.4)	1.19	(30.2)	Adhesive	Black	120
1" X 2" (25.4 X 50.8) Nominal Duct Size																	
181-12008	181-12008	SL1X2	1.0	(25.4)	2.07	(52.6)	1.0	(25.4)	0.4	(10.2)	1.0	(25.4)	1.62	(41.1)	Non-Adhesive	White	120
181-12013	181-12013	SLA1X2	1.0	(25.4)	2.07	(52.6)	1.0	(25.4)	0.4	(10.2)	1.0	(25.4)	1.62	(41.1)	Adhesive	White	120
181-12005	181-12005	SL1X2	1.0	(25.4)	2.07	(52.6)	1.0	(25.4)	0.4	(10.2)	1.0	(25.4)	1.62	(41.1)	Non-Adhesive	Gray	120
181-12011	181-12011	SLA1X2	1.0	(25.4)	2.07	(52.6)	1.0	(25.4)	0.4	(10.2)	1.0	(25.4)	1.62	(41.1)	Adhesive	Gray	120
181-00024	181-00024	SL1X2	1.0	(25.4)	2.07	(52.6)	1.0	(25.4)	0.4	(10.2)	1.0	(25.4)	1.62	(41.1)	Non-Adhesive	Black	120
181-00565	181-00565	SLA1X2	1.0	(25.4)	2.07	(52.6)	1.0	(25.4)	0.4	(10.2)	1.0	(25.4)	1.62	(41.1)	Adhesive	Black	120

Dimensions are approximate and subject to technical changes. Use Part No. for ordering and Type for specification purposes. Sold in 6-foot lengths.

Wiring Duct

Slotted Wall Wiring Duct *Continued*

Article No.	Part No.	Type	Width (W)		Height (H)		Width (W2)		Width (W3)		Width (W4)		Width (W5)		Description	Color	Pkg Qty
			in.	(mm)	in.	(mm)	in.	(mm)	in.	(mm)	in.	(mm)	in.	(mm)			
1" X 3" (25.4X 76.2) Nominal Duct Size																	
181-13008	181-13008	SL1X3	1.0	(25.4)	3.07	(77.9)	1.0	(25.4)	0.4	(10.2)	1.0	(25.4)	2.60	(66.0)	Non-Adhesive	White	120
181-13012	181-13012	SLA1X3	1.0	(25.4)	3.07	(77.9)	1.0	(25.4)	0.4	(10.2)	1.0	(25.4)	2.60	(66.0)	Adhesive	White	120
181-13006	181-13006	SL1X3	1.0	(25.4)	3.07	(77.9)	1.0	(25.4)	0.4	(10.2)	1.0	(25.4)	2.60	(66.0)	Non-Adhesive	Gray	120
181-13010	181-13010	SLA1X3	1.0	(25.4)	3.07	(77.9)	1.0	(25.4)	0.4	(10.2)	1.0	(25.4)	2.60	(66.0)	Adhesive	Gray	120
181-13003	181-13003	SL1X3	1.0	(25.4)	3.07	(77.9)	1.0	(25.4)	0.4	(10.2)	1.0	(25.4)	2.60	(66.0)	Non-Adhesive	Black	120
181-00566	181-00566	SLA1X3	1.0	(25.4)	3.07	(77.9)	1.0	(25.4)	0.4	(10.2)	1.0	(25.4)	2.60	(66.0)	Adhesive	Black	120
1" X 4" (25.4 X 101.6) Nominal Duct Size																	
181-14006	181-14006	SL1X4	1.0	(25.4)	4.07	(103.4)	1.0	(25.4)	0.4	(10.2)	1.0	(25.4)	3.60	(91.4)	Non-Adhesive	White	120
181-00569	181-00569	SLA1X4	1.0	(25.4)	4.07	(103.4)	1.0	(25.4)	0.4	(10.2)	1.0	(25.4)	3.60	(91.4)	Adhesive	White	120
181-14003	181-14003	SL1X4	1.0	(25.4)	4.07	(103.4)	1.0	(25.4)	0.4	(10.2)	1.0	(25.4)	3.60	(91.4)	Non-Adhesive	Gray	120
181-00568	181-00568	SLA1X4	1.0	(25.4)	4.07	(103.4)	1.0	(25.4)	0.4	(10.2)	1.0	(25.4)	3.60	(91.4)	Adhesive	Gray	120
181-14001	181-14001	SL1X4	1.0	(25.4)	4.07	(103.4)	1.0	(25.4)	0.4	(10.2)	1.0	(25.4)	3.60	(91.4)	Non-Adhesive	Black	120
181-00567	181-00567	SLA1X4	1.0	(25.4)	4.07	(103.4)	1.0	(25.4)	0.4	(10.2)	1.0	(25.4)	3.60	(91.4)	Adhesive	Black	120
1.5" X 1" (76.2 X 127.0) Nominal Duct Size																	
181-15107	181-15107	SL1.5X1	1.5	(38.1)	1.06	(26.9)	1.5	(38.1)	0.4	(10.2)	1.0	(25.4)	0.75	(19.1)	Non-Adhesive	White	120
181-00572	181-00572	SLA1.5X1	1.5	(38.1)	1.06	(26.9)	1.5	(38.1)	0.4	(10.2)	1.0	(25.4)	0.75	(19.1)	Adhesive	White	120
181-15105	181-15105	SL1.5X1	1.5	(38.1)	1.06	(26.9)	1.5	(38.1)	0.4	(10.2)	1.0	(25.4)	0.75	(19.1)	Non-Adhesive	Gray	120
181-00571	181-00571	SLA1.5X1	1.5	(38.1)	1.06	(26.9)	1.5	(38.1)	0.4	(10.2)	1.0	(25.4)	0.75	(19.1)	Adhesive	Gray	120
181-00548	181-00548	SL1.5X1	1.5	(38.1)	1.06	(26.9)	1.5	(38.1)	0.4	(10.2)	1.0	(25.4)	0.75	(19.1)	Non-Adhesive	Black	120
181-00570	181-00570	SLA1.5X1	1.5	(38.1)	1.06	(26.9)	1.5	(38.1)	0.4	(10.2)	1.0	(25.4)	0.75	(19.1)	Adhesive	Black	120
1.5" X 1.5" (38.1 X 38.1) Nominal Duct Size																	
181-15511	181-15511	SL1.5X1.5	1.5	(38.1)	1.57	(39.9)	1.5	(38.1)	0.4	(10.2)	1.0	(25.4)	1.20	(30.5)	Non-Adhesive	White	120
181-15515	181-15515	SLA1.5X1.5	1.5	(38.1)	1.57	(39.9)	1.5	(38.1)	0.4	(10.2)	1.0	(25.4)	1.20	(30.5)	Adhesive	White	120
181-15509	181-15509	SL1.5X1.5	1.5	(38.1)	1.57	(39.9)	1.5	(38.1)	0.4	(10.2)	1.0	(25.4)	1.20	(30.5)	Non-Adhesive	Gray	120
181-15513	181-15513	SLA1.5X1.5	1.5	(38.1)	1.57	(39.9)	1.5	(38.1)	0.4	(10.2)	1.0	(25.4)	1.20	(30.5)	Adhesive	Gray	120
181-15505	181-15505	SL1.5X1.5	1.5	(38.1)	1.57	(39.9)	1.5	(38.1)	0.4	(10.2)	1.0	(25.4)	1.20	(30.5)	Non-Adhesive	Black	120
181-00027	181-00027	SLA1.5X1.5	1.5	(38.1)	1.57	(39.9)	1.5	(38.1)	0.4	(10.2)	1.0	(25.4)	1.20	(30.5)	Adhesive	Black	120
1.5" X 2" (38.1 X 50.8) Nominal Duct Size																	
181-15209	181-15209	SL1.5X2	1.5	(38.1)	2.07	(52.6)	1.5	(38.1)	0.4	(10.2)	1.0	(25.4)	1.60	(40.6)	Non-Adhesive	White	120
181-15213	181-15213	SLA1.5X2	1.5	(38.1)	2.07	(52.6)	1.5	(38.1)	0.4	(10.2)	1.0	(25.4)	1.60	(40.6)	Adhesive	White	120
181-15207	181-15207	SL1.5X2	1.5	(38.1)	2.07	(52.6)	1.5	(38.1)	0.4	(10.2)	1.0	(25.4)	1.60	(40.6)	Non-Adhesive	Gray	120
181-15211	181-15211	SLA1.5X2	1.5	(38.1)	2.07	(52.6)	1.5	(38.1)	0.4	(10.2)	1.0	(25.4)	1.60	(40.6)	Adhesive	Gray	120
181-15203	181-15203	SL1.5X2	1.5	(38.1)	2.07	(52.6)	1.5	(38.1)	0.4	(10.2)	1.0	(25.4)	1.60	(40.6)	Non-Adhesive	Black	120
181-00573	181-00573	SLA1.5X2	1.5	(38.1)	2.07	(52.6)	1.5	(38.1)	0.4	(10.2)	1.0	(25.4)	1.60	(40.6)	Adhesive	Black	120
1.5" X 3" (38.1 X 76.2) Nominal Duct Size																	
181-15306	181-15306	SL1.5X3	1.5	(38.1)	3.07	(77.9)	1.5	(38.1)	0.4	(10.2)	1.0	(25.4)	2.60	(66.0)	Non-Adhesive	White	120
181-15308	181-15308	SLA1.5X3	1.5	(38.1)	3.07	(77.9)	1.5	(38.1)	0.4	(10.2)	1.0	(25.4)	2.60	(66.0)	Adhesive	White	120
181-15304	181-15304	SL1.5X3	1.5	(38.1)	3.07	(77.9)	1.5	(38.1)	0.4	(10.2)	1.0	(25.4)	2.60	(66.0)	Non-Adhesive	Gray	120
181-15307	181-15307	SLA1.5X3	1.5	(38.1)	3.07	(77.9)	1.5	(38.1)	0.4	(10.2)	1.0	(25.4)	2.60	(66.0)	Adhesive	Gray	120
181-00550	181-00550	SL1.5X3	1.5	(38.1)	3.07	(77.9)	1.5	(38.1)	0.4	(10.2)	1.0	(25.4)	2.60	(66.0)	Non-Adhesive	Black	120
181-00575	181-00575	SLA1.5X3	1.5	(38.1)	3.07	(77.9)	1.5	(38.1)	0.4	(10.2)	1.0	(25.4)	2.60	(66.0)	Adhesive	Black	120

Dimensions are approximate and subject to technical changes. Use Part No. for ordering and Type for specification purposes. Sold in 6-foot lengths.

Slotted Wall Wiring Duct *Continued*

Article No.	Part No.	Type	Width (W)		Height (H)		Width (W2)		Width (W3)		Width (W4)		Width (W5)		Description	Color	Pkg Qty ft.
			in.	(mm)	in.	(mm)	in.	(mm)	in.	(mm)	in.	(mm)	in.	(mm)			
1.5" X 4" (38.1 X 101.6) Nominal Duct Size																	
181-15406	181-15406	SL1.5X4	1.5	(38.1)	4.07	(103.4)	1.5	(38.1)	0.4	(10.2)	1.0	(25.4)	3.60	(91.4)	Non-Adhesive	White	120
181-00578	181-00578	SLA1.5X4	1.5	(38.1)	4.07	(103.4)	1.5	(38.1)	0.4	(10.2)	1.0	(25.4)	3.60	(91.4)	Adhesive	White	120
181-15404	181-15404	SL1.5X4	1.5	(38.1)	4.07	(103.4)	1.5	(38.1)	0.4	(10.2)	1.0	(25.4)	3.60	(91.4)	Non-Adhesive	Gray	120
181-00577	181-00577	SLA1.5X4	1.5	(38.1)	4.07	(103.4)	1.5	(38.1)	0.4	(10.2)	1.0	(25.4)	3.60	(91.4)	Adhesive	Gray	120
181-15400	181-15400	SL1.5X4	1.5	(38.1)	4.07	(103.4)	1.5	(38.1)	0.4	(10.2)	1.0	(25.4)	3.60	(91.4)	Non-Adhesive	Black	120
181-00576	181-00576	SLA1.5X4	1.5	(38.1)	4.07	(103.4)	1.5	(38.1)	0.4	(10.2)	1.0	(25.4)	3.60	(91.4)	Adhesive	Black	120
2" X 1" (50.8 X 25.4) Nominal Duct Size																	
181-21007	181-21007	SL2X1	2.0	(50.8)	1.06	(26.9)	2.0	(50.8)	0.4	(10.2)	1.0	(25.4)	0.75	(19.1)	Non-Adhesive	White	120
181-00580	181-00580	SLA2X1	2.0	(50.8)	1.06	(26.9)	2.0	(50.8)	0.4	(10.2)	1.0	(25.4)	0.75	(19.1)	Adhesive	White	120
181-21005	181-21005	SL2X1	2.0	(50.8)	1.06	(26.9)	2.0	(50.8)	0.4	(10.2)	1.0	(25.4)	0.75	(19.1)	Non-Adhesive	Gray	120
181-21009	181-21009	SLA2X1	2.0	(50.8)	1.06	(26.9)	2.0	(50.8)	0.4	(10.2)	1.0	(25.4)	0.75	(19.1)	Adhesive	Gray	120
181-00554	181-00554	SL2X1	2.0	(50.8)	1.06	(26.9)	2.0	(50.8)	0.4	(10.2)	1.0	(25.4)	0.75	(19.1)	Non-Adhesive	Black	120
181-00579	181-00579	SLA2X1	2.0	(50.8)	1.06	(26.9)	2.0	(50.8)	0.4	(10.2)	1.0	(25.4)	0.75	(19.1)	Adhesive	Black	120
2" X 2" (50.8 X 50.8) Nominal Duct Size																	
181-22028	181-22028	SL2X2	2.0	(50.8)	2.07	(52.6)	2.0	(50.8)	0.4	(10.2)	1.0	(25.4)	1.60	(40.6)	Non-Adhesive	White	120
181-22034	181-22034	SLA2X2	2.0	(50.8)	2.07	(52.6)	2.0	(50.8)	0.4	(10.2)	1.0	(25.4)	1.60	(40.6)	Adhesive	White	120
181-22024	181-22024	SL2X2	2.0	(50.8)	2.07	(52.6)	2.0	(50.8)	0.4	(10.2)	1.0	(25.4)	1.60	(40.6)	Non-Adhesive	Gray	120
181-22032	181-22032	SLA2X2	2.0	(50.8)	2.07	(52.6)	2.0	(50.8)	0.4	(10.2)	1.0	(25.4)	1.60	(40.6)	Adhesive	Gray	120
181-22020	181-22020	SL2X2	2.0	(50.8)	2.07	(52.6)	2.0	(50.8)	0.4	(10.2)	1.0	(25.4)	1.60	(40.6)	Non-Adhesive	Black	120
181-22030	181-22030	SLA2X2	2.0	(50.8)	2.07	(52.6)	2.0	(50.8)	0.4	(10.2)	1.0	(25.4)	1.60	(40.6)	Adhesive	Black	120
2" X 3" (50.8 X 76.2) Nominal Duct Size																	
181-23009	181-23009	SL2X3	2.0	(50.8)	3.07	(77.9)	2.0	(50.8)	0.4	(10.2)	1.0	(25.4)	2.60	(66.0)	Non-Adhesive	White	120
181-23012	181-23012	SLA2X3	2.0	(50.8)	3.07	(77.9)	2.0	(50.8)	0.4	(10.2)	1.0	(25.4)	2.60	(66.0)	Adhesive	White	120
181-23007	181-23007	SL2X3	2.0	(50.8)	3.07	(77.9)	2.0	(50.8)	0.4	(10.2)	1.0	(25.4)	2.60	(66.0)	Non-Adhesive	Gray	120
181-00582	181-00582	SLA2X3	2.0	(50.8)	3.07	(77.9)	2.0	(50.8)	0.4	(10.2)	1.0	(25.4)	2.60	(66.0)	Adhesive	Gray	120
181-23003	181-23003	SL2X3	2.0	(50.8)	3.07	(77.9)	2.0	(50.8)	0.4	(10.2)	1.0	(25.4)	2.60	(66.0)	Non-Adhesive	Black	120
181-00581	181-00581	SLA2X3	2.0	(50.8)	3.07	(77.9)	2.0	(50.8)	0.4	(10.2)	1.0	(25.4)	2.60	(66.0)	Adhesive	Black	120
2" X 4" (50.8 X 101.6) Nominal Duct Size																	
181-24011	181-24011	SL2X4	2.0	(50.8)	4.07	(103.4)	2.0	(50.8)	0.4	(10.2)	1.0	(25.4)	3.60	(91.4)	Non-Adhesive	White	120
181-24014	181-24014	SLA2X4	2.0	(50.8)	4.07	(103.4)	2.0	(50.8)	0.4	(10.2)	1.0	(25.4)	3.60	(91.4)	Adhesive	White	120
181-24008	181-24008	SL2X4	2.0	(50.8)	4.07	(103.4)	2.0	(50.8)	0.4	(10.2)	1.0	(25.4)	3.60	(91.4)	Non-Adhesive	Gray	120
181-24013	181-24013	SLA2X4	2.0	(50.8)	4.07	(103.4)	2.0	(50.8)	0.4	(10.2)	1.0	(25.4)	3.60	(91.4)	Adhesive	Gray	120
181-24003	181-24003	SL2X4	2.0	(50.8)	4.07	(103.4)	2.0	(50.8)	0.4	(10.2)	1.0	(25.4)	3.60	(91.4)	Non-Adhesive	Black	120
181-00583	181-00583	SLA2X4	2.0	(50.8)	4.07	(103.4)	2.0	(50.8)	0.4	(10.2)	1.0	(25.4)	3.60	(91.4)	Adhesive	Black	120
2" X 5" (50.8 X 127) Nominal Duct Size																	
181-00240	181-00240	SL2X5	2.0	(50.8)	5.07	(128.8)	2.0	(50.8)	0.4	(10.2)	1.0	(25.4)	4.60	(116.8)	Non-Adhesive	White	120
181-00242	181-00242	SLA2X5	2.0	(50.8)	5.07	(128.8)	2.0	(50.8)	0.4	(10.2)	1.0	(25.4)	4.60	(116.8)	Adhesive	White	120
181-00236	181-00236	SL2X5	2.0	(50.8)	5.07	(128.8)	2.0	(50.8)	0.4	(10.2)	1.0	(25.4)	4.60	(116.8)	Non-Adhesive	Gray	120
181-00238	181-00238	SLA2X5	2.0	(50.8)	5.07	(128.8)	2.0	(50.8)	0.4	(10.2)	1.0	(25.4)	4.60	(116.8)	Adhesive	Gray	120
181-00316	181-00316	SL2X5	2.0	(50.8)	5.07	(128.8)	2.0	(50.8)	0.4	(10.2)	1.0	(25.4)	4.60	(116.8)	Non-Adhesive	Black	120
181-00317	181-00317	SLA2X5	2.0	(50.8)	5.07	(128.8)	2.0	(50.8)	0.4	(10.2)	1.0	(25.4)	4.60	(116.8)	Adhesive	Black	120

Dimensions are approximate and subject to technical changes. Use Part No. for ordering and Type for specification purposes. Sold in 6-foot lengths.

Wiring Duct

Slotted Wall Wiring Duct *Continued*

Article No.	Part No.	Type	Width (W)		Height (H)		Width (W2)		Width (W3)		Width (W4)		Width (W5)		Description	Color	Pkg Qty ft.
			in.	(mm)	in.	(mm)	in.	(mm)	in.	(mm)	in.	(mm)	in.	(mm)			
2.5" X 3" (63.5 X 76.2) Nominal Duct Size																	
181-00216	181-00216	SL2.5X3	2.5	(63.5)	3.07	(77.9)	2.5	(63.5)	0.4	(10.2)	1.0	(25.4)	2.60	(66.0)	Non-Adhesive	White	120
181-00218	181-00218	SLA2.5X3	2.5	(63.5)	3.07	(77.9)	2.5	(63.5)	0.4	(10.2)	1.0	(25.4)	2.60	(66.0)	Adhesive	White	120
181-00212	181-00212	SL2.5X3	2.5	(63.5)	3.07	(77.9)	2.5	(63.5)	0.4	(10.2)	1.0	(25.4)	2.60	(66.0)	Non-Adhesive	Gray	120
181-00214	181-00214	SLA2.5X3	2.5	(63.5)	3.07	(77.9)	2.5	(63.5)	0.4	(10.2)	1.0	(25.4)	2.60	(66.0)	Adhesive	Gray	120
181-00318	181-00318	SL2.5X3	2.5	(63.5)	3.07	(77.9)	2.5	(63.5)	0.4	(10.2)	1.0	(25.4)	2.60	(66.0)	Non-Adhesive	Black	120
181-00319	181-00319	SLA2.5X3	2.5	(63.5)	3.07	(77.9)	2.5	(63.5)	0.4	(10.2)	1.0	(25.4)	2.60	(66.0)	Adhesive	Black	120
3" X 1" (76.2 X 25.4) Nominal Duct Size																	
181-31007	181-31007	SL3X1	3.0	(76.2)	1.06	(26.9)	3.0	(76.2)	0.4	(10.2)	1.0	(25.4)	0.75	(19.1)	Non-Adhesive	White	120
181-00586	181-00586	SLA3X1	3.0	(76.2)	1.06	(26.9)	3.0	(76.2)	0.4	(10.2)	1.0	(25.4)	0.75	(19.1)	Adhesive	White	120
181-00558	181-00558	SL3X1	3.0	(76.2)	1.06	(26.9)	3.0	(76.2)	0.4	(10.2)	1.0	(25.4)	0.75	(19.1)	Non-Adhesive	Gray	120
181-00585	181-00585	SLA3X1	3.0	(76.2)	1.06	(26.9)	3.0	(76.2)	0.4	(10.2)	1.0	(25.4)	0.75	(19.1)	Adhesive	Gray	120
181-00557	181-00557	SL3X1	3.0	(76.2)	1.06	(26.9)	3.0	(76.2)	0.4	(10.2)	1.0	(25.4)	0.75	(19.1)	Non-Adhesive	Black	120
181-00584	181-00584	SLA3X1	3.0	(76.2)	1.06	(26.9)	3.0	(76.2)	0.4	(10.2)	1.0	(25.4)	0.75	(19.1)	Adhesive	Black	120
3" X 2" (76.2 X 50.8) Nominal Duct Size																	
181-32009	181-32009	SL3X2	3.0	(76.2)	2.07	(52.6)	3.0	(76.2)	0.4	(10.2)	1.0	(25.4)	1.62	(41.1)	Non-Adhesive	White	120
181-32015	181-32015	SLA3X2	3.0	(76.2)	2.07	(52.6)	3.0	(76.2)	0.4	(10.2)	1.0	(25.4)	1.62	(41.1)	Adhesive	White	120
181-32006	181-32006	SL3X2	3.0	(76.2)	2.07	(52.6)	3.0	(76.2)	0.4	(10.2)	1.0	(25.4)	1.62	(41.1)	Non-Adhesive	Gray	120
181-32012	181-32012	SLA3X2	3.0	(76.2)	2.07	(52.6)	3.0	(76.2)	0.4	(10.2)	1.0	(25.4)	1.62	(41.1)	Adhesive	Gray	120
181-32004	181-32004	SL3X2	3.0	(76.2)	2.07	(52.6)	3.0	(76.2)	0.4	(10.2)	1.0	(25.4)	1.62	(41.1)	Non-Adhesive	Black	120
181-00026	181-00026	SLA3X2	3.0	(76.2)	2.07	(52.6)	3.0	(76.2)	0.4	(10.2)	1.0	(25.4)	1.62	(41.1)	Adhesive	Black	120
3" X 3" (76.2 X 76.2) Nominal Duct Size																	
181-33018	181-33018	SL3X3	3.0	(76.2)	3.07	(77.9)	3.0	(76.2)	0.4	(10.2)	1.0	(25.4)	2.60	(66.0)	Non-Adhesive	White	120
181-33022	181-33022	SLA3X3	3.0	(76.2)	3.07	(77.9)	3.0	(76.2)	0.4	(10.2)	1.0	(25.4)	2.60	(66.0)	Adhesive	White	120
181-33016	181-33016	SL3X3	3.0	(76.2)	3.07	(77.9)	3.0	(76.2)	0.4	(10.2)	1.0	(25.4)	2.60	(66.0)	Non-Adhesive	Gray	120
181-33021	181-33021	SLA3X3	3.0	(76.2)	3.07	(77.9)	3.0	(76.2)	0.4	(10.2)	1.0	(25.4)	2.60	(66.0)	Adhesive	Gray	120
181-33009	181-33009	SL3X3	3.0	(76.2)	3.07	(77.9)	3.0	(76.2)	0.4	(10.2)	1.0	(25.4)	2.60	(66.0)	Non-Adhesive	Black	120
181-00159	181-00159	SLA3X3	3.0	(76.2)	3.07	(77.9)	3.0	(76.2)	0.4	(10.2)	1.0	(25.4)	2.60	(66.0)	Adhesive	Black	120
3" X 4" (76.2 X 101.6) Nominal Duct Size																	
181-34007	181-34007	SL3X4	3.0	(76.2)	4.07	(103.4)	3.0	(76.2)	0.4	(10.2)	1.0	(25.4)	3.60	(91.4)	Non-Adhesive	White	120
181-00590	181-00590	SLA3X4	3.0	(76.2)	4.07	(103.4)	3.0	(76.2)	0.4	(10.2)	1.0	(25.4)	3.60	(91.4)	Adhesive	White	120
181-34004	181-34004	SL3X4	3.0	(76.2)	4.07	(103.4)	3.0	(76.2)	0.4	(10.2)	1.0	(25.4)	3.60	(91.4)	Non-Adhesive	Gray	120
181-00589	181-00589	SLA3X4	3.0	(76.2)	4.07	(103.4)	3.0	(76.2)	0.4	(10.2)	1.0	(25.4)	3.60	(91.4)	Adhesive	Gray	120
181-34002	181-34002	SL3X4	3.0	(76.2)	4.07	(103.4)	3.0	(76.2)	0.4	(10.2)	1.0	(25.4)	3.60	(91.4)	Non-Adhesive	Black	120
181-00588	181-00588	SLA3X4	3.0	(76.2)	4.07	(103.4)	3.0	(76.2)	0.4	(10.2)	1.0	(25.4)	3.60	(91.4)	Adhesive	Black	120
3" X 5" (76.2 X 127.0) Nominal Duct Size																	
181-00560	181-00560	SL3X5	3.0	(76.2)	5.06	(128.5)	3.0	(76.2)	0.4	(10.2)	1.0	(25.4)	4.60	(116.8)	Non-Adhesive	White	120
181-00155	181-00155	SLA3X5	3.0	(76.2)	5.06	(128.5)	3.0	(76.2)	0.4	(10.2)	1.0	(25.4)	4.60	(116.8)	Adhesive	White	120
181-35005	181-35005	SL3X5	3.0	(76.2)	5.06	(128.5)	3.0	(76.2)	0.4	(10.2)	1.0	(25.4)	4.60	(116.8)	Non-Adhesive	Gray	120
181-00156	181-00156	SLA3X5	3.0	(76.2)	5.06	(128.5)	3.0	(76.2)	0.4	(10.2)	1.0	(25.4)	4.60	(116.8)	Adhesive	Gray	120
181-35002	181-35002	SL3X5	3.0	(76.2)	5.06	(128.5)	3.0	(76.2)	0.4	(10.2)	1.0	(25.4)	4.60	(116.8)	Non-Adhesive	Black	120
181-00157	181-00157	SLA3X5	3.0	(76.2)	5.06	(128.5)	3.0	(76.2)	0.4	(10.2)	1.0	(25.4)	4.60	(116.8)	Adhesive	Black	120

Dimensions are approximate and subject to technical changes. Use Part No. for ordering and Type for specification purposes. Sold in 6-foot lengths.

Slotted Wall Wiring Duct *Continued*

Article No.	Part No.	Type	Width (W)		Height (H)		Width (W2)		Width (W3)		Width (W4)		Width (W5)		Description	Color	Pkg Qty
			in.	(mm)	in.	(mm)	in.	(mm)	in.	(mm)	in.	(mm)	in.	(mm)			
4" X 2" (101.6 X 50.8) Nominal Duct Size																	
181-42010	181-42010	SL4X2	4.0	(101.6)	2.07	(52.6)	4.0	(101.6)	0.4	(10.2)	1.0	(25.4)	1.62	(41.1)	Non-Adhesive	White	120
181-42014	181-42014	SLA4X2	4.0	(101.6)	2.07	(52.6)	4.0	(101.6)	0.4	(10.2)	1.0	(25.4)	1.62	(41.1)	Adhesive	White	120
181-42008	181-42008	SL4X2	4.0	(101.6)	2.07	(52.6)	4.0	(101.6)	0.4	(10.2)	1.0	(25.4)	1.62	(41.1)	Non-Adhesive	Gray	120
181-00592	181-00592	SLA4X2	4.0	(101.6)	2.07	(52.6)	4.0	(101.6)	0.4	(10.2)	1.0	(25.4)	1.62	(41.1)	Adhesive	Gray	120
181-42005	181-42005	SL4X2	4.0	(101.6)	2.07	(52.6)	4.0	(101.6)	0.4	(10.2)	1.0	(25.4)	1.62	(41.1)	Non-Adhesive	Black	120
181-00591	181-00591	SLA4X2	4.0	(101.6)	2.07	(52.6)	4.0	(101.6)	0.4	(10.2)	1.0	(25.4)	1.62	(41.1)	Adhesive	Black	120
4" X 3" (101.6 X 76.2) Nominal Duct Size																	
181-43006	181-43006	SL4X3	4.0	(101.6)	3.07	(77.9)	4.0	(101.6)	0.4	(10.2)	1.0	(25.4)	2.60	(66.0)	Non-Adhesive	White	120
181-00594	181-00594	SLA4X3	4.0	(101.6)	3.07	(77.9)	4.0	(101.6)	0.4	(10.2)	1.0	(25.4)	2.60	(66.0)	Adhesive	White	120
181-43004	181-43004	SL4X3	4.0	(101.6)	3.07	(77.9)	4.0	(101.6)	0.4	(10.2)	1.0	(25.4)	2.60	(66.0)	Non-Adhesive	Gray	120
181-43008	181-43008	SLA4X3	4.0	(101.6)	3.07	(77.9)	4.0	(101.6)	0.4	(10.2)	1.0	(25.4)	2.60	(66.0)	Adhesive	Gray	120
181-00562	181-00562	SL4X3	4.0	(101.6)	3.07	(77.9)	4.0	(101.6)	0.4	(10.2)	1.0	(25.4)	2.60	(66.0)	Non-Adhesive	Black	120
181-00593	181-00593	SLA4X3	4.0	(101.6)	3.07	(77.9)	4.0	(101.6)	0.4	(10.2)	1.0	(25.4)	2.60	(66.0)	Adhesive	Black	120
4" X 4" (101.6 X 101.6) Nominal Duct Size																	
181-44031	181-44031	SL4X4	4.0	(101.6)	4.07	(103.4)	4.0	(101.6)	0.4	(10.2)	1.0	(25.4)	3.60	(91.4)	Non-Adhesive	White	120
181-44035	181-44035	SLA4X4	4.0	(101.6)	4.07	(103.4)	4.0	(101.6)	0.4	(10.2)	1.0	(25.4)	3.60	(91.4)	Adhesive	White	120
181-44027	181-44027	SL4X4	4.0	(101.6)	4.07	(103.4)	4.0	(101.6)	0.4	(10.2)	1.0	(25.4)	3.60	(91.4)	Non-Adhesive	Gray	120
181-44033	181-44033	SLA4X4	4.0	(101.6)	4.07	(103.4)	4.0	(101.6)	0.4	(10.2)	1.0	(25.4)	3.60	(91.4)	Adhesive	Gray	120
181-44020	181-44020	SL4X4	4.0	(101.6)	4.07	(103.4)	4.0	(101.6)	0.4	(10.2)	1.0	(25.4)	3.60	(91.4)	Non-Adhesive	Black	120
181-00595	181-00595	SLA4X4	4.0	(101.6)	4.07	(103.4)	4.0	(101.6)	0.4	(10.2)	1.0	(25.4)	3.60	(91.4)	Adhesive	Black	120
4" X 5" (101.6 X 127.0) Nominal Duct Size																	
181-45011	181-45011	SL4X5	4.0	(101.6)	5.07	(128.8)	4.0	(101.6)	0.4	(10.2)	1.0	(25.4)	4.60	(116.8)	Non-Adhesive	White	60
181-45013	181-45013	SLA4X5	4.0	(101.6)	5.07	(128.8)	4.0	(101.6)	0.4	(10.2)	1.0	(25.4)	4.60	(116.8)	Adhesive	White	60
181-45010	181-45010	SL4X5	4.0	(101.6)	5.07	(128.8)	4.0	(101.6)	0.4	(10.2)	1.0	(25.4)	4.60	(116.8)	Non-Adhesive	Gray	60
181-00596	181-00596	SLA4X5	4.0	(101.6)	5.07	(128.8)	4.0	(101.6)	0.4	(10.2)	1.0	(25.4)	4.60	(116.8)	Adhesive	Gray	60
181-45002	181-45002	SL4X5	4.0	(101.6)	5.07	(128.8)	4.0	(101.6)	0.4	(10.2)	1.0	(25.4)	4.60	(116.8)	Non-Adhesive	Black	60
181-45012	181-45012	SLA4X5	4.0	(101.6)	5.07	(128.8)	4.0	(101.6)	0.4	(10.2)	1.0	(25.4)	4.60	(116.8)	Adhesive	Black	60

Dimensions are approximate and subject to technical changes. Use Part No. for ordering and Type for specification purposes. Sold in 6-foot lengths.

Wiring Duct

High Density Slotted Wall Wiring Duct

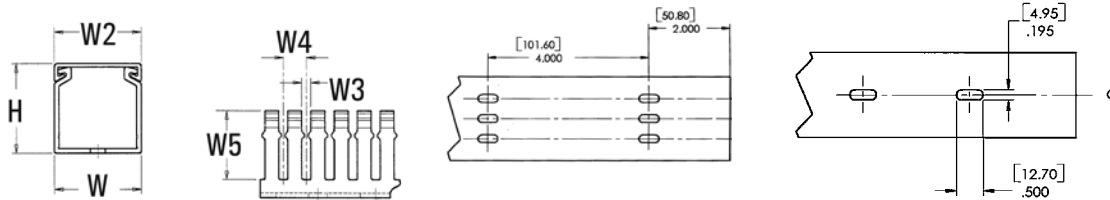
Pro-Duct high density slotted wiring duct features narrow fingers, a 2:1 finger ratio compared to standard slotted wiring duct. With the narrow fingers, compact designs and components are more easily accommodated.

Features and Benefits

- Narrow fingers reduce fanning of the wires to the terminal blocks, presenting a neater appearance.
- Each finger is provided with a double restriction to hold wires in the bottom portion of the duct, allowing for easier installation.
- Mounting holes are uniform in size to the solid and slotted wall duct, but are offered every 2 inches to accommodate compact designs and ease installation.



Material Data	
Material	Polyvinylchloride (PVC)
Flammability	Self-extinguishing
Operating Temperature	+122°F (+50°C)



Article No.	Part No.	Type	Width (W)		Height (H)		Width (W2)		Width (W3)		Width (W4)		Width (W5)		Description	Color	Pkg Qty
			in.	(mm)	in.	(mm)	in.	(mm)	in.	(mm)	in.	(mm)	in.	(mm)			
1" X 1" (25.4 X 25.4) Nominal Duct Size																	
184-11006	184-11006	SLHD1X1	1.0	(25.4)	1.06	(26.9)	1.0	(25.4)	0.16	(4.1)	0.4	(10.2)	0.75	(19.05)	Non-Adhesive	White	120
181-00622	181-00622	SLHDA1X1	1.0	(25.4)	1.06	(26.9)	1.0	(25.4)	0.16	(4.1)	0.4	(10.2)	0.75	(19.05)	Adhesive	White	120
184-11004	184-11004	SLHD1X1	1.0	(25.4)	1.06	(26.9)	1.0	(25.4)	0.16	(4.1)	0.4	(10.2)	0.75	(19.05)	Non-Adhesive	Gray	120
181-00621	181-00621	SLHDA1X1	1.0	(25.4)	1.06	(26.9)	1.0	(25.4)	0.16	(4.1)	0.4	(10.2)	0.75	(19.05)	Adhesive	Gray	120
181-00597	181-00597	SLHD1X1	1.0	(25.4)	1.06	(26.9)	1.0	(25.4)	0.16	(4.1)	0.4	(10.2)	0.75	(19.05)	Non-Adhesive	Black	120
181-00637	181-00637	SLHDA1X1	1.0	(25.4)	1.06	(26.9)	1.0	(25.4)	0.16	(4.1)	0.4	(10.2)	0.75	(19.05)	Adhesive	Black	120
1" X 1.5" (25.4 X 38.1) Nominal Duct Size																	
184-11012	184-11012	SLHD1X1.5	1.0	(25.4)	1.57	(39.9)	1.0	(25.4)	0.16	(4.1)	0.4	(10.2)	1.19	(30.20)	Non-Adhesive	White	120
184-11009	184-11009	SLHDA1X1.5	1.0	(25.4)	1.57	(39.9)	1.0	(25.4)	0.16	(4.1)	0.4	(10.2)	1.19	(30.20)	Adhesive	White	120
184-11010	184-11010	SLHD1X1.5	1.0	(25.4)	1.57	(39.9)	1.0	(25.4)	0.16	(4.1)	0.4	(10.2)	1.19	(30.20)	Non-Adhesive	Gray	120
184-11008	184-11008	SLHDA1X1.5	1.0	(25.4)	1.57	(39.9)	1.0	(25.4)	0.16	(4.1)	0.4	(10.2)	1.19	(30.20)	Adhesive	Gray	120
181-00598	181-00598	SLHD1X1.5	1.0	(25.4)	1.57	(39.9)	1.0	(25.4)	0.16	(4.1)	0.4	(10.2)	1.19	(30.20)	Non-Adhesive	Black	120
181-00623	181-00623	SLHDA1X1.5	1.0	(25.4)	1.57	(39.9)	1.0	(25.4)	0.16	(4.1)	0.4	(10.2)	1.19	(30.20)	Adhesive	Black	120

Dimensions are approximate and subject to technical changes. Use Part No. for ordering and Type for specification purposes. Sold in 6-foot lengths.

High Density Slotted Wall Wiring Duct *Continued*

Article No.	Part No.	Type	Width (W)		Height (H)		Width (W2)		Width (W3)		Width (W4)		Width (W5)		Description	Color	Pkg Qty ft.
			in.	(mm)	in.	(mm)	in.	(mm)	in.	(mm)	in.	(mm)	in.	(mm)			
1" X 2" (25.4 X 50.8) Nominal Duct Size																	
184-12007	184-12007	SLHD1X2	1.0	(25.4)	2.07	(52.6)	1.0	(25.4)	0.16	(4.1)	0.4	(10.2)	1.62	(41.1)	Non-Adhesive	White	120
184-12004	184-12004	SLHDA1X2	1.0	(25.4)	2.07	(52.6)	1.0	(25.4)	0.16	(4.1)	0.4	(10.2)	1.62	(41.1)	Adhesive	White	120
184-12005	184-12005	SLHD1X2	1.0	(25.4)	2.07	(52.6)	1.0	(25.4)	0.16	(4.1)	0.4	(10.2)	1.62	(41.1)	Non-Adhesive	Gray	120
184-12002	184-12002	SLHDA1X2	1.0	(25.4)	2.07	(52.6)	1.0	(25.4)	0.16	(4.1)	0.4	(10.2)	1.62	(41.1)	Adhesive	Gray	120
181-00599	181-00599	SLHD1X2	1.0	(25.4)	2.07	(52.6)	1.0	(25.4)	0.16	(4.1)	0.4	(10.2)	1.62	(41.1)	Non-Adhesive	Black	120
181-00624	181-00624	SLHDA1X2	1.0	(25.4)	2.07	(52.6)	1.0	(25.4)	0.16	(4.1)	0.4	(10.2)	1.62	(41.1)	Adhesive	Black	120
1" X 3" (25.4 X 76.2) Nominal Duct Size																	
184-13007	184-13007	SLHD1X3	1.0	(25.4)	3.07	(77.9)	1.0	(25.4)	0.16	(4.1)	0.4	(10.2)	2.60	(66.0)	Non-Adhesive	White	120
184-13003	184-13003	SLHDA1X3	1.0	(25.4)	3.07	(77.9)	1.0	(25.4)	0.16	(4.1)	0.4	(10.2)	2.60	(66.0)	Adhesive	White	120
184-13005	184-13005	SLHD1X3	1.0	(25.4)	3.07	(77.9)	1.0	(25.4)	0.16	(4.1)	0.4	(10.2)	2.60	(66.0)	Non-Adhesive	Gray	120
181-00626	181-00626	SLHDA1X3	1.0	(25.4)	3.07	(77.9)	1.0	(25.4)	0.16	(4.1)	0.4	(10.2)	2.60	(66.0)	Adhesive	Gray	120
181-00600	181-00600	SLHD1X3	1.0	(25.4)	3.07	(77.9)	1.0	(25.4)	0.16	(4.1)	0.4	(10.2)	2.60	(66.0)	Non-Adhesive	Black	120
181-00625	181-00625	SLHDA1X3	1.0	(25.4)	3.07	(77.9)	1.0	(25.4)	0.16	(4.1)	0.4	(10.2)	2.60	(66.0)	Adhesive	Black	120
1" X 4" (25.4 X 101.6) Nominal Duct Size																	
184-14004	184-14004	SLHD1X4	1.0	(25.4)	4.07	(103.4)	1.0	(25.4)	0.16	(4.1)	0.4	(10.2)	3.60	(91.4)	Non-Adhesive	White	120
181-00629	181-00629	SLHDA1X4	1.0	(25.4)	4.07	(103.4)	1.0	(25.4)	0.16	(4.1)	0.4	(10.2)	3.60	(91.4)	Adhesive	White	120
184-14002	184-14002	SLHD1X4	1.0	(25.4)	4.07	(103.4)	1.0	(25.4)	0.16	(4.1)	0.4	(10.2)	3.60	(91.4)	Non-Adhesive	Gray	120
181-00628	181-00628	SLHDA1X4	1.0	(25.4)	4.07	(103.4)	1.0	(25.4)	0.16	(4.1)	0.4	(10.2)	3.60	(91.4)	Adhesive	Gray	120
181-00601	181-00601	SLHD1X4	1.0	(25.4)	4.07	(103.4)	1.0	(25.4)	0.16	(4.1)	0.4	(10.2)	3.60	(91.4)	Non-Adhesive	Black	120
181-00627	181-00627	SLHDA1X4	1.0	(25.4)	4.07	(103.4)	1.0	(25.4)	0.16	(4.1)	0.4	(10.2)	3.60	(91.4)	Adhesive	Black	120
1.5" X 1" (38.1 X 25.4) Nominal Duct Size																	
184-15102	184-15102	SLHD1.5X1	1.5	(38.1)	1.06	(26.9)	1.5	(38.1)	0.16	(4.1)	0.4	(10.2)	0.75	(19.1)	Non-Adhesive	White	120
181-00632	181-00632	SLHDA1.5X1	1.5	(38.1)	1.06	(26.9)	1.5	(38.1)	0.16	(4.1)	0.4	(10.2)	0.75	(19.1)	Adhesive	White	120
184-15101	184-15101	SLHD1.5X1	1.5	(38.1)	1.06	(26.9)	1.5	(38.1)	0.16	(4.1)	0.4	(10.2)	0.75	(19.1)	Non-Adhesive	Gray	120
181-00631	181-00631	SLHDA1.5X1	1.5	(38.1)	1.06	(26.9)	1.5	(38.1)	0.16	(4.1)	0.4	(10.2)	0.75	(19.1)	Adhesive	Gray	120
181-00602	181-00602	SLHD1.5X1	1.5	(38.1)	1.06	(26.9)	1.5	(38.1)	0.16	(4.1)	0.4	(10.2)	0.75	(19.1)	Non-Adhesive	Black	120
181-00630	181-00630	SLHDA1.5X1	1.5	(38.1)	1.06	(26.9)	1.5	(38.1)	0.16	(4.1)	0.4	(10.2)	0.75	(19.1)	Adhesive	Black	120
1.5" X 1.5" (38.1 X 38.1) Nominal Duct Size																	
184-15155	184-15155	SLHD1.5X1.5	1.5	(38.1)	1.57	(39.9)	1.5	(38.1)	0.16	(4.1)	0.4	(10.2)	1.20	(30.5)	Non-Adhesive	White	120
184-15153	184-15153	SLHDA1.5X1.5	1.5	(38.1)	1.57	(39.9)	1.5	(38.1)	0.16	(4.1)	0.4	(10.2)	1.20	(30.5)	Adhesive	White	120
184-15152	184-15152	SLHD1.5X1.5	1.5	(38.1)	1.57	(39.9)	1.5	(38.1)	0.16	(4.1)	0.4	(10.2)	1.20	(30.5)	Non-Adhesive	Gray	120
184-15151	184-15151	SLHDA1.5X1.5	1.5	(38.1)	1.57	(39.9)	1.5	(38.1)	0.16	(4.1)	0.4	(10.2)	1.20	(30.5)	Adhesive	Gray	120
181-00603	181-00603	SLHD1.5X1.5	1.5	(38.1)	1.57	(39.9)	1.5	(38.1)	0.16	(4.1)	0.4	(10.2)	1.20	(30.5)	Non-Adhesive	Black	120
181-00633	181-00633	SLHDA1.5X1.5	1.5	(38.1)	1.57	(39.9)	1.5	(38.1)	0.16	(4.1)	0.4	(10.2)	1.20	(30.5)	Adhesive	Black	120
1.5" X 2" (38.1 X 50.8) Nominal Duct Size																	
184-15206	184-15206	SLHD1.5X2	1.5	(38.1)	2.07	(52.6)	1.5	(38.1)	0.16	(4.1)	0.4	(10.2)	1.60	(40.6)	Non-Adhesive	White	120
184-15205	184-15205	SLHDA1.5X2	1.5	(38.1)	2.07	(52.6)	1.5	(38.1)	0.16	(4.1)	0.4	(10.2)	1.60	(40.6)	Adhesive	White	120
184-15202	184-15202	SLHD1.5X2	1.5	(38.1)	2.07	(52.6)	1.5	(38.1)	0.16	(4.1)	0.4	(10.2)	1.60	(40.6)	Non-Adhesive	Gray	120
184-15201	181-00281	SLHDA1.5X2	1.5	(38.1)	2.07	(52.6)	1.5	(38.1)	0.16	(4.1)	0.4	(10.2)	1.60	(40.6)	Adhesive	Gray	120
181-00604	181-00604	SLHD1.5X2	1.5	(38.1)	2.07	(52.6)	1.5	(38.1)	0.16	(4.1)	0.4	(10.2)	1.60	(40.6)	Non-Adhesive	Black	120
181-00634	184-15201	SLHDA1.5X2	1.5	(38.1)	2.07	(52.6)	1.5	(38.1)	0.16	(4.1)	0.4	(10.2)	1.60	(40.6)	Adhesive	Black	120

Dimensions are approximate and subject to technical changes. Use Part No. for ordering and Type for specification purposes. Sold in 6-foot lengths.

Wiring Duct

High Density Slotted Wall Wiring Duct *Continued*

Article No.	Part No.	Type	Width (W)		Height (H)		Width (W2)		Width (W3)		Width (W4)		Width (W5)		Description	Color	Pkg Qty ft.
			in.	(mm)	in.	(mm)	in.	(mm)	in.	(mm)	in.	(mm)	in.	(mm)			
1.5" X 3" (38.1 X 76.2) Nominal Duct Size																	
184-15304	184-15304	SLHD1.5X3	1.5	(38.1)	3.07	(77.9)	1.5	(38.1)	0.16	(4.1)	0.4	(10.2)	2.60	(66.0)	Non-Adhesive	White	120
184-15301	184-15301	SLHDA1.5X3	1.5	(38.1)	3.07	(77.9)	1.5	(38.1)	0.16	(4.1)	0.4	(10.2)	2.60	(66.0)	Adhesive	White	120
184-15302	184-15302	SLHD1.5X3	1.5	(38.1)	3.07	(77.9)	1.5	(38.1)	0.16	(4.1)	0.4	(10.2)	2.60	(66.0)	Non-Adhesive	Gray	120
181-00636	181-00636	SLHDA1.5X3	1.5	(38.1)	3.07	(77.9)	1.5	(38.1)	0.16	(4.1)	0.4	(10.2)	2.60	(66.0)	Adhesive	Gray	120
181-00605	181-00605	SLHD1.5X3	1.5	(38.1)	3.07	(77.9)	1.5	(38.1)	0.16	(4.1)	0.4	(10.2)	2.60	(66.0)	Non-Adhesive	Black	120
181-00635	181-00635	SLHDA1.5X3	1.5	(38.1)	3.07	(77.9)	1.5	(38.1)	0.16	(4.1)	0.4	(10.2)	2.60	(66.0)	Adhesive	Black	120
1.5" X 4" (38.1 X 101.6) Nominal Duct Size																	
184-15403	184-15403	SLHD1.5X4	1.5	(38.1)	4.07	(103.4)	1.5	(38.1)	0.16	(4.1)	0.4	(10.2)	3.60	(91.4)	Non-Adhesive	White	120
181-00639	181-00639	SLHDA1.5X4	1.5	(38.1)	4.07	(103.4)	1.5	(38.1)	0.16	(4.1)	0.4	(10.2)	3.60	(91.4)	Adhesive	White	120
184-15401	184-15401	SLHD1.5X4	1.5	(38.1)	4.07	(103.4)	1.5	(38.1)	0.16	(4.1)	0.4	(10.2)	3.60	(91.4)	Non-Adhesive	Gray	120
181-00638	181-00638	SLHDA1.5X4	1.5	(38.1)	4.07	(103.4)	1.5	(38.1)	0.16	(4.1)	0.4	(10.2)	3.60	(91.4)	Adhesive	Gray	120
181-00606	181-00606	SLHD1.5X4	1.5	(38.1)	4.07	(103.4)	1.5	(38.1)	0.16	(4.1)	0.4	(10.2)	3.60	(91.4)	Non-Adhesive	Black	120
181-00620	181-00620	SLHDA1.5X4	1.5	(38.1)	4.07	(103.4)	1.5	(38.1)	0.16	(4.1)	0.4	(10.2)	3.60	(91.4)	Adhesive	Black	120
2" X 1" (50.8 X 25.4) Nominal Duct Size																	
184-21003	184-21003	SLHD2X1	2.0	(50.8)	1.06	(26.9)	2.0	(50.8)	0.16	(4.1)	0.4	(10.2)	0.75	(19.1)	Non-Adhesive	White	120
181-00642	181-00642	SLHDA2X1	2.0	(50.8)	1.06	(26.9)	2.0	(50.8)	0.16	(4.1)	0.4	(10.2)	0.75	(19.1)	Adhesive	White	120
184-21002	184-21002	SLHD2X1	2.0	(50.8)	1.06	(26.9)	2.0	(50.8)	0.16	(4.1)	0.4	(10.2)	0.75	(19.1)	Non-Adhesive	Gray	120
181-00641	181-00641	SLHDA2X1	2.0	(50.8)	1.06	(26.9)	2.0	(50.8)	0.16	(4.1)	0.4	(10.2)	0.75	(19.1)	Adhesive	Gray	120
181-00607	181-00607	SLHD2X1	2.0	(50.8)	1.06	(26.9)	2.0	(50.8)	0.16	(4.1)	0.4	(10.2)	0.75	(19.1)	Non-Adhesive	Black	120
181-00640	181-00640	SLHDA2X1	2.0	(50.8)	1.06	(26.9)	2.0	(50.8)	0.16	(4.1)	0.4	(10.2)	0.75	(19.1)	Adhesive	Black	120
2" X 2" (50.8 X 50.8) Nominal Duct Size																	
184-22008	184-22008	SLHD2X2	2.0	(50.8)	2.07	(52.6)	2.0	(50.8)	0.16	(4.1)	0.4	(10.2)	1.60	(40.6)	Non-Adhesive	White	120
184-22003	184-22003	SLHDA2X2	2.0	(50.8)	2.07	(52.6)	2.0	(50.8)	0.16	(4.1)	0.4	(10.2)	1.60	(40.6)	Adhesive	White	120
184-22005	184-22005	SLHD2X2	2.0	(50.8)	2.07	(52.6)	2.0	(50.8)	0.16	(4.1)	0.4	(10.2)	1.60	(40.6)	Non-Adhesive	Gray	120
181-00644	181-00644	SLHDA2X2	2.0	(50.8)	2.07	(52.6)	2.0	(50.8)	0.16	(4.1)	0.4	(10.2)	1.60	(40.6)	Adhesive	Gray	120
181-00608	181-00608	SLHD2X2	2.0	(50.8)	2.07	(52.6)	2.0	(50.8)	0.16	(4.1)	0.4	(10.2)	1.60	(40.6)	Non-Adhesive	Black	120
181-00643	181-00643	SLHDA2X2	2.0	(50.8)	2.07	(52.6)	2.0	(50.8)	0.16	(4.1)	0.4	(10.2)	1.60	(40.6)	Adhesive	Black	120
2" X 3" (50.8 X 76.2) Nominal Duct Size																	
184-23006	184-23006	SLHD2X3	2.0	(50.8)	3.07	(77.9)	2.0	(50.8)	0.16	(4.1)	0.4	(10.2)	2.60	(66.0)	Non-Adhesive	White	120
184-23003	184-23003	SLHDA2X3	2.0	(50.8)	3.07	(77.9)	2.0	(50.8)	0.16	(4.1)	0.4	(10.2)	2.60	(66.0)	Adhesive	White	120
184-23004	184-23004	SLHD2X3	2.0	(50.8)	3.07	(77.9)	2.0	(50.8)	0.16	(4.1)	0.4	(10.2)	2.60	(66.0)	Non-Adhesive	Gray	120
181-00646	181-00646	SLHDA2X3	2.0	(50.8)	3.07	(77.9)	2.0	(50.8)	0.16	(4.1)	0.4	(10.2)	2.60	(66.0)	Adhesive	Gray	120
181-00609	181-00609	SLHD2X3	2.0	(50.8)	3.07	(77.9)	2.0	(50.8)	0.16	(4.1)	0.4	(10.2)	2.60	(66.0)	Non-Adhesive	Black	120
181-00645	181-00645	SLHDA2X3	2.0	(50.8)	3.07	(77.9)	2.0	(50.8)	0.16	(4.1)	0.4	(10.2)	2.60	(66.0)	Adhesive	Black	120
2" X 4" (50.8 X 101.6) Nominal Duct Size																	
184-24007	184-24007	SLHD2X4	2.0	(50.8)	4.07	(103.4)	2.0	(50.8)	0.16	(4.1)	0.4	(10.2)	3.60	(91.4)	Non-Adhesive	White	120
184-24003	184-24003	SLHDA2X4	2.0	(50.8)	4.07	(103.4)	2.0	(50.8)	0.16	(4.1)	0.4	(10.2)	3.60	(91.4)	Adhesive	White	120
184-24004	184-24004	SLHD2X4	2.0	(50.8)	4.07	(103.4)	2.0	(50.8)	0.16	(4.1)	0.4	(10.2)	3.60	(91.4)	Non-Adhesive	Gray	120
181-00648	181-00648	SLHDA2X4	2.0	(50.8)	4.07	(103.4)	2.0	(50.8)	0.16	(4.1)	0.4	(10.2)	3.60	(91.4)	Adhesive	Gray	120
181-00610	181-00610	SLHD2X4	2.0	(50.8)	4.07	(103.4)	2.0	(50.8)	0.16	(4.1)	0.4	(10.2)	3.60	(91.4)	Non-Adhesive	Black	120
181-00647	181-00647	SLHDA2X4	2.0	(50.8)	4.07	(103.4)	2.0	(50.8)	0.16	(4.1)	0.4	(10.2)	3.60	(91.4)	Adhesive	Black	120

Dimensions are approximate and subject to technical changes. Use Part No. for ordering and Type for specification purposes. Sold in 6-foot lengths.

High Density Slotted Wall Wiring Duct *Continued*

Article No.	Part No.	Type	Width (W)		Height (H)		Width (W2)		Width (W3)		Width (W4)		Width (W5)		Description	Color	Pkg Qty ft.
			in.	(mm)	in.	(mm)	in.	(mm)	in.	(mm)	in.	(mm)	in.	(mm)			
2" X 5" (50.8 X 127) Nominal Duct Size																	
181-00265	181-00265	SLHD2X5	2.0	(50.8)	5.07	(128.8)	2.0	(50.8)	0.16	(4.1)	0.4	(10.2)	4.60	(116.8)	Non-Adhesive	White	120
181-00259	181-00259	SLHDA2X5	2.0	(50.8)	5.07	(128.8)	2.0	(50.8)	0.16	(4.1)	0.4	(10.2)	4.60	(116.8)	Adhesive	White	120
181-00252	181-00252	SLHD2X5	2.0	(50.8)	5.07	(128.8)	2.0	(50.8)	0.16	(4.1)	0.4	(10.2)	4.60	(116.8)	Non-Adhesive	Gray	120
181-00254	181-00254	SLHDA2X5	2.0	(50.8)	5.07	(128.8)	2.0	(50.8)	0.16	(4.1)	0.4	(10.2)	4.60	(116.8)	Adhesive	Gray	120
181-00320	181-00320	SLHD2X5	2.0	(50.8)	5.07	(128.8)	2.0	(50.8)	0.16	(4.1)	0.4	(10.2)	4.60	(116.8)	Non-Adhesive	Black	120
181-00321	181-00321	SLHDA2X5	2.0	(50.8)	5.07	(128.8)	2.0	(50.8)	0.16	(4.1)	0.4	(10.2)	4.60	(116.8)	Adhesive	Black	120
2.5" X 3" (63.5 X 76.2) Nominal Duct Size																	
181-00232	181-00232	SLHD2.5X3	2.5	(63.5)	3.07	(77.9)	2.5	(63.5)	0.16	(4.1)	0.4	(10.2)	2.60	(66.0)	Non-Adhesive	White	120
181-00234	181-00234	SLHDA2.5X3	2.5	(63.5)	3.07	(77.9)	2.5	(63.5)	0.16	(4.1)	0.4	(10.2)	2.60	(66.0)	Adhesive	White	120
181-00228	181-00228	SLHD2.5X3	2.5	(63.5)	3.07	(77.9)	2.5	(63.5)	0.16	(4.1)	0.4	(10.2)	2.60	(66.0)	Non-Adhesive	Gray	120
181-00230	181-00230	SLHDA2.5X3	2.5	(63.5)	3.07	(77.9)	2.5	(63.5)	0.16	(4.1)	0.4	(10.2)	2.60	(66.0)	Adhesive	Gray	120
181-00322	181-00322	SLHD2.5X3	2.5	(63.5)	3.07	(77.9)	2.5	(63.5)	0.16	(4.1)	0.4	(10.2)	2.60	(66.0)	Non-Adhesive	Black	120
181-00323	181-00323	SLHDA2.5X3	2.5	(63.5)	3.07	(77.9)	2.5	(63.5)	0.16	(4.1)	0.4	(10.2)	2.60	(66.0)	Adhesive	Black	120
3" X 1" (76.2 X 25.4) Nominal Duct Size																	
181-00613	181-00613	SLHD3X1	3.0	(76.2)	1.06	(26.9)	3.0	(76.2)	0.16	(4.1)	0.4	(10.2)	0.75	(19.1)	Non-Adhesive	White	120
181-00652	181-00652	SLHDA3X1	3.0	(76.2)	1.06	(26.9)	3.0	(76.2)	0.16	(4.1)	0.4	(10.2)	0.75	(19.1)	Adhesive	White	120
181-00612	181-00612	SLHD3X1	3.0	(76.2)	1.06	(26.9)	3.0	(76.2)	0.16	(4.1)	0.4	(10.2)	0.75	(19.1)	Non-Adhesive	Gray	120
181-00651	181-00651	SLHDA3X1	3.0	(76.2)	1.06	(26.9)	3.0	(76.2)	0.16	(4.1)	0.4	(10.2)	0.75	(19.1)	Adhesive	Gray	120
181-00611	181-00611	SLHD3X1	3.0	(76.2)	1.06	(26.9)	3.0	(76.2)	0.16	(4.1)	0.4	(10.2)	0.75	(19.1)	Non-Adhesive	Black	120
181-00649	181-00649	SLHDA3X1	3.0	(76.2)	1.06	(26.9)	3.0	(76.2)	0.16	(4.1)	0.4	(10.2)	0.75	(19.1)	Adhesive	Black	120
3" X 2" (76.2 X 50.8) Nominal Duct Size																	
184-32004	184-32004	SLHD3X2	3.0	(76.2)	2.07	(52.6)	3.0	(76.2)	0.16	(4.1)	0.4	(10.2)	1.62	(41.1)	Non-Adhesive	White	120
181-00655	181-00655	SLHDA3X2	3.0	(76.2)	2.07	(52.6)	3.0	(76.2)	0.16	(4.1)	0.4	(10.2)	1.62	(41.1)	Adhesive	White	120
184-32001	184-32001	SLHD3X2	3.0	(76.2)	2.07	(52.6)	3.0	(76.2)	0.16	(4.1)	0.4	(10.2)	1.62	(41.1)	Non-Adhesive	Gray	120
181-00654	181-00654	SLHDA3X2	3.0	(76.2)	2.07	(52.6)	3.0	(76.2)	0.16	(4.1)	0.4	(10.2)	1.62	(41.1)	Adhesive	Gray	120
181-00614	181-00614	SLHD3X2	3.0	(76.2)	2.07	(52.6)	3.0	(76.2)	0.16	(4.1)	0.4	(10.2)	1.62	(41.1)	Non-Adhesive	Black	120
181-00653	181-00653	SLHDA3X2	3.0	(76.2)	2.07	(52.6)	3.0	(76.2)	0.16	(4.1)	0.4	(10.2)	1.62	(41.1)	Adhesive	Black	120
3" X 3" (76.2 X 76.2) Nominal Duct Size																	
184-33004	184-33004	SLHD3X3	3.0	(76.2)	3.07	(77.9)	3.0	(76.2)	0.16	(4.1)	0.4	(10.2)	2.60	(66.0)	Non-Adhesive	White	120
184-33001	184-33001	SLHDA3X3	3.0	(76.2)	3.07	(77.9)	3.0	(76.2)	0.16	(4.1)	0.4	(10.2)	2.60	(66.0)	Adhesive	White	120
184-33002	184-33002	SLHD3X3	3.0	(76.2)	3.07	(77.9)	3.0	(76.2)	0.16	(4.1)	0.4	(10.2)	2.60	(66.0)	Non-Adhesive	Gray	120
181-00657	181-00657	SLHDA3X3	3.0	(76.2)	3.07	(77.9)	3.0	(76.2)	0.16	(4.1)	0.4	(10.2)	2.60	(66.0)	Adhesive	Gray	120
181-00615	181-00615	SLHD3X3	3.0	(76.2)	3.07	(77.9)	3.0	(76.2)	0.16	(4.1)	0.4	(10.2)	2.60	(66.0)	Non-Adhesive	Black	120
181-00656	181-00656	SLHDA3X3	3.0	(76.2)	3.07	(77.9)	3.0	(76.2)	0.16	(4.1)	0.4	(10.2)	2.60	(66.0)	Adhesive	Black	120
3" X 4" (76.2 X 101.6) Nominal Duct Size																	
184-34005	184-34005	SLHD3X4	3.0	(76.2)	4.07	(103.4)	3.0	(76.2)	0.16	(4.1)	0.4	(10.2)	3.60	(91.4)	Non-Adhesive	White	120
184-34001	184-34001	SLHDA3X4	3.0	(76.2)	4.07	(103.4)	3.0	(76.2)	0.16	(4.1)	0.4	(10.2)	3.60	(91.4)	Adhesive	White	120
184-34003	184-34003	SLHD3X4	3.0	(76.2)	4.07	(103.4)	3.0	(76.2)	0.16	(4.1)	0.4	(10.2)	3.60	(91.4)	Non-Adhesive	Gray	120
181-00659	181-00659	SLHDA3X4	3.0	(76.2)	4.07	(103.4)	3.0	(76.2)	0.16	(4.1)	0.4	(10.2)	3.60	(91.4)	Adhesive	Gray	120
181-00616	181-00616	SLHD3X4	3.0	(76.2)	4.07	(103.4)	3.0	(76.2)	0.16	(4.1)	0.4	(10.2)	3.60	(91.4)	Non-Adhesive	Black	120
181-00658	181-00658	SLHDA3X4	3.0	(76.2)	4.07	(103.4)	3.0	(76.2)	0.16	(4.1)	0.4	(10.2)	3.60	(91.4)	Adhesive	Black	120

Dimensions are approximate and subject to technical changes. Use Part No. for ordering and Type for specification purposes. Sold in 6-foot lengths.

Wiring Duct

High Density Slotted Wall Wiring Duct *Continued*

Article No.	Part No.	Type	Width (W)		Height (H)		Width (W2)		Width (W3)		Width (W4)		Width (W5)		Description	Color	Pkg Qty ft.
			in.	(mm)	in.	(mm)	in.	(mm)	in.	(mm)	in.	(mm)	in.	(mm)			
3" X 5" (76.2 X 127.0) Nominal Duct Size																	
181-00149	181-00149	SLHD3X5	3.0	(76.2)	5.06	(128.5)	3.0	(76.2)	0.16	(4.1)	0.4	(10.2)	4.60	(116.8)	Non-Adhesive	White	120
181-00662	181-00662	SLHDA3X5	3.0	(76.2)	5.06	(128.5)	3.0	(76.2)	0.16	(4.1)	0.4	(10.2)	4.60	(116.8)	Adhesive	White	120
181-00150	181-00150	SLHD3X5	3.0	(76.2)	5.06	(128.5)	3.0	(76.2)	0.16	(4.1)	0.4	(10.2)	4.60	(116.8)	Non-Adhesive	Gray	120
181-00661	181-00661	SLHDA3X5	3.0	(76.2)	5.06	(128.5)	3.0	(76.2)	0.16	(4.1)	0.4	(10.2)	4.60	(116.8)	Adhesive	Gray	120
181-00151	181-00151	SLHD3X5	3.0	(76.2)	5.06	(128.5)	3.0	(76.2)	0.16	(4.1)	0.4	(10.2)	4.60	(116.8)	Non-Adhesive	Black	120
181-00660	181-00660	SLHDA3X5	3.0	(76.2)	5.06	(128.5)	3.0	(76.2)	0.16	(4.1)	0.4	(10.2)	4.60	(116.8)	Adhesive	Black	120
4" X 2" (101.6 X 50.8) Nominal Duct Size																	
184-42003	184-42003	SLHD4X2	4.0	(101.6)	2.07	(52.6)	4.0	(101.6)	0.16	(4.1)	0.4	(10.2)	1.62	(41.1)	Non-Adhesive	White	120
181-00665	181-00665	SLHDA4X2	4.0	(101.6)	2.07	(52.6)	4.0	(101.6)	0.16	(4.1)	0.4	(10.2)	1.62	(41.1)	Adhesive	White	120
184-42001	184-42001	SLHD4X2	4.0	(101.6)	2.07	(52.6)	4.0	(101.6)	0.16	(4.1)	0.4	(10.2)	1.62	(41.1)	Non-Adhesive	Gray	120
181-00664	181-00664	SLHDA4X2	4.0	(101.6)	2.07	(52.6)	4.0	(101.6)	0.16	(4.1)	0.4	(10.2)	1.62	(41.1)	Adhesive	Gray	120
181-00617	181-00617	SLHD4X2	4.0	(101.6)	2.07	(52.6)	4.0	(101.6)	0.16	(4.1)	0.4	(10.2)	1.62	(41.1)	Non-Adhesive	Black	120
181-00663	181-00663	SLHDA4X2	4.0	(101.6)	2.07	(52.6)	4.0	(101.6)	0.16	(4.1)	0.4	(10.2)	1.62	(41.1)	Adhesive	Black	120
4" X 3" (101.6 X 76.2) Nominal Duct Size																	
184-43003	184-43003	SLHD4X3	4.0	(101.6)	3.07	(77.9)	4.0	(101.6)	0.16	(4.1)	0.4	(10.2)	2.60	(66.0)	Non-Adhesive	White	120
181-00152	181-00152	SLHDA4X3	4.0	(101.6)	3.07	(77.9)	4.0	(101.6)	0.16	(4.1)	0.4	(10.2)	2.60	(66.0)	Adhesive	White	120
184-43001	184-43001	SLHD4X3	4.0	(101.6)	3.07	(77.9)	4.0	(101.6)	0.16	(4.1)	0.4	(10.2)	2.60	(66.0)	Non-Adhesive	Gray	120
181-00153	181-00153	SLHDA4X3	4.0	(101.6)	3.07	(77.9)	4.0	(101.6)	0.16	(4.1)	0.4	(10.2)	2.60	(66.0)	Adhesive	Gray	120
181-00618	181-00618	SLHD4X3	4.0	(101.6)	3.07	(77.9)	4.0	(101.6)	0.16	(4.1)	0.4	(10.2)	2.60	(66.0)	Non-Adhesive	Black	120
181-00154	181-00154	SLHDA4X3	4.0	(101.6)	3.07	(77.9)	4.0	(101.6)	0.16	(4.1)	0.4	(10.2)	2.60	(66.0)	Adhesive	Black	120
4" X 4" (101.6 X 101.6) Nominal Duct Size																	
184-44004	184-44004	SLHD4X4	4.0	(101.6)	4.07	(103.4)	4.0	(101.6)	0.16	(4.1)	0.4	(10.2)	3.60	(91.4)	Non-Adhesive	White	120
184-44001	184-44001	SLHDA4X4	4.0	(101.6)	4.07	(103.4)	4.0	(101.6)	0.16	(4.1)	0.4	(10.2)	3.60	(91.4)	Adhesive	White	120
184-44002	184-44002	SLHD4X4	4.0	(101.6)	4.07	(103.4)	4.0	(101.6)	0.16	(4.1)	0.4	(10.2)	3.60	(91.4)	Non-Adhesive	Gray	120
181-00667	181-00667	SLHDA4X4	4.0	(101.6)	4.07	(103.4)	4.0	(101.6)	0.16	(4.1)	0.4	(10.2)	3.60	(91.4)	Adhesive	Gray	120
181-00619	181-00619	SLHD4X4	4.0	(101.6)	4.07	(103.4)	4.0	(101.6)	0.16	(4.1)	0.4	(10.2)	3.60	(91.4)	Non-Adhesive	Black	120
181-00666	181-00666	SLHDA4X4	4.0	(101.6)	4.07	(103.4)	4.0	(101.6)	0.16	(4.1)	0.4	(10.2)	3.60	(91.4)	Adhesive	Black	120
4" X 5" (101.6 X 127.0) Nominal Duct Size																	
181-00691	181-00691	SLHD4X5	4.0	(101.6)	5.07	(128.8)	4.0	(101.6)	0.16	(4.1)	0.4	(10.2)	4.60	(116.8)	Non-Adhesive	White	60
181-00669	181-00669	SLDHA4X5	4.0	(101.6)	5.07	(128.8)	4.0	(101.6)	0.16	(4.1)	0.4	(10.2)	4.60	(116.8)	Adhesive	White	60
181-00692	181-00692	SLHD4X5	4.0	(101.6)	5.07	(128.8)	4.0	(101.6)	0.16	(4.1)	0.4	(10.2)	4.60	(116.8)	Non-Adhesive	Gray	60
181-00670	181-00670	SLDHA4X5	4.0	(101.6)	5.07	(128.8)	4.0	(101.6)	0.16	(4.1)	0.4	(10.2)	4.60	(116.8)	Adhesive	Gray	60
181-00690	181-00690	SLHD4X5	4.0	(101.6)	5.07	(128.8)	4.0	(101.6)	0.16	(4.1)	0.4	(10.2)	4.60	(116.8)	Non-Adhesive	Black	60
181-00668	181-00668	SLDHA4X5	4.0	(101.6)	5.07	(128.8)	4.0	(101.6)	0.16	(4.1)	0.4	(10.2)	4.60	(116.8)	Adhesive	Black	60

Dimensions are approximate and subject to technical changes. Use Part No. for ordering and Type for specification purposes. Sold in 6-foot lengths.

Wiring Duct Material Properties

Physical Properties	Material	ASTM Method	Test Units	Test Results
Specific Gravity (Gray)	PVC	D-792	—	1.4
Durometer Hardness	PVC	D-2240	Shore Hardness	77D
Flexural Strength	PVC	D-790	psi	9,900
Modulus of Elasticity (Tension)	PVC	D-638	psi	351,000
Continuous Operating Temperature	PVC	UL746B	°F (°C)	122 (50)
Heat Deflection Temperature (264 psi)	PVC	D-648	°F (°C)	161 (72)
Tensile Strength (+73°F)	PVC	D-638	psi	6,500
Izod Impact Strength (+73°F)	PVC	D-256	ft. lbs./in. notch	15
Flame Resistance	PVC	D-635	—	Self-extinguishing
UL Standard 94	PVC		.029 and .062	94V-O

Wiring Capacity

Duct Size (W"xH")	Duct Area (Sq. In.)	ELECTRICAL							DATA		
		10 AWG	12 AWG	14 AWG	14 AWG	16 AWG	18 AWG	22 AWG	CAT 5E	CAT 6	CAT 6A
		WIRE O.D.									
		0.176	.0158	0.165	0.139	0.125	0.113	0.065	0.219	0.240	0.354
.5x.5	0.18	4	5	4	6	7	9	27	2	2	1
.5x1	0.38	8	10	9	13	15	19	57	5	4	2
.75x.75	0.28	6	7	7	9	11	14	42	4	3	1
1x1	0.735	15	19	17	24	30	37	111	10	8	4
1x1.5	1.135	23	29	27	37	46	57	171	15	13	6
1x2	1.515	31	39	35	50	62	76	228	20	17	8
1x3	2.22	46	57	52	73	90	111	335	30	25	11
1x4	2.936	60	75	69	97	120	146	443	40	32	15
1.5x1	1.205	25	31	28	40	49	60	182	16	13	6
1.5x1.5	1.85	38	47	43	61	75	92	279	25	20	9
1.5x2	2.475	51	63	58	82	101	123	373	33	27	13
1.5x3	3.669	75	94	86	121	150	183	553	50	41	19
1.5x4	4.881	100	125	114	161	199	243	736	66	54	25
2x1	1.678	35	43	39	55	68	84	253	23	19	9
2x2	3.438	71	88	80	113	140	171	518	47	38	17
2x3	5.122	105	131	120	169	209	255	772	69	57	26
2x4	6.829	140	174	160	225	278	341	1030	92	76	35
2x5	8.488	175	217	199	280	346	423	1280	115	94	43
2.5x3	6.564	135	167	154	216	268	327	990	89	73	33
3x1	2.57	53	66	60	85	105	128	388	35	28	13
3x2	5.36	110	137	125	177	219	268	809	73	59	27
3x3	8.03	165	205	188	265	327	400	1210	109	89	41
3x4	10.72	221	274	251	354	437	535	1617	145	119	55
3x5	13.38	275	341	313	441	546	668	2017	181	148	68
4x2	7.288	150	186	171	240	297	364	1099	99	81	37
4x3	10.932	225	279	256	360	446	545	1648	148	121	56
4x4	14.62	301	373	342	482	596	729	2204	198	162	74
4x5	18.27	375	466	427	602	745	911	2754	247	202	93
6x4	22.4	461	572	524	739	913	1117	3377	303	248	114
8x4	30.16	620	770	706	994	1230	1505	4548	408	334	153

Formula used to calculate fill capacity: Number of wires = duct area / (1.57 x (wire o.d.)²) or duct area x (0.637/(wire o.d.)²) * 50% Fill Capacity

In addition to its full line of wiring duct and accessories, HellermannTyton offers a broad range of protection, identification and fastening solutions.

Flexiform Edge Protection Grommet Strip

HellermannTyton Flexiform grommet is a unique, continuous wire protection product which conforms and fits into holes of all shapes and sizes. No special tools needed, Flexiform easily cuts to length with scissors, eliminating waste and helping to keep grommet stock to a minimum. HellermannTyton Flexiform grommet can be used on any type of material, including wood, steel, aluminum, plexiglass and glass. It is available for thicknesses from .016" to .512".



Braided Sleeving

Braided sleeving offers flexible cable protection, resistance from abrasion and ease of application. Expandable sleeving is specially woven to expand when compressed and contract when pulled apart. For optimal fit, HellermannTyton braided sleeving accommodates a variety of cable diameters and is available in different materials to perform in moderate to extreme environments.



Spiralwrap

Spiralwrap provides cable routing and protection when flexibility around corners and bends is required. Spiralwrap easily wraps around wire and cable bundles to organize, route and protect. Spiralwrap may be used to protect edges of components during the manufacturing process. Offered in many sizes and colors, HellermannTyton Spiralwrap is reusable and resistant to most chemicals and is UL Recognized.



Convolute Tubing

Convolute tubing protects cables, tubing and hoses from abrasion and pinching. HellermannTyton convolute tubing is offered in a variety of sizes and materials. The standard center slit design allows for easy installation and retrofitting. Tubing is available in standard, bulk and dispenser box packaging.



Helawrap

Helawrap flexible sheathing installs effortlessly to route, protect and conceal wires and cables. Helawrap easily wraps around cables with a “zipper-like” motion to protect against abrasion and mechanical stress caused by movement and bending. Helawrap bases and clips secure Helawrap to control panel boxes, enabling routing around corners and tight bends. Available in black and white for general purpose, Helawrap is also offered in a black flame-retardant PA6V0 material. A handy application tool is included in every package for faster installations.



HelaGuard Non-Metallic Conduits & Fittings

HelaGuard non-metallic conduits and fittings work together to protect wires and cables from liquid, dirt, abrasion, heat, UV light and more. In addition to solid wall, conduits are available in slit options for ease of installation and maintenance. HelaGuard nylon fittings provide superior tensile strength with a simple snap-on or compression style connection. Solid conduits and tubing can be combined with fittings to create liquid-tight ingress protection, up to IP68.



Heat Shrink Tubing

HellermannTyton non-printable heat shrink tubing provides form-fitting, secure protection for wires and components. Designed for fast, even shrinking, heat shrink tubing provides durable protection and insulation for wire splices, shielding from mechanical abrasion and temperature fluctuations. HellermannTyton heat shrink tubing is available in an array of colors, wall thicknesses and shrink ratios. Packaged in mini reels, bulk reels, sticks and convenience packs.



Electrical Tape

Made with a high quality adhesive for a long-lasting, secure bond, HellermannTyton electrical tape provides excellent protection in wire and cable splicing, termination and insulation applications. The special adhesive expands after application to tighten and optimize the seal against moisture and debris. Color options allow for color coding and identification.



**HellermannTyton North American
Corporate Headquarters**

7930 N. Faulkner Rd, PO Box 245017
Milwaukee, WI 53224-9517
Phone: (414) 355-1130, (800) 537-1512
Fax: (414) 355-7341, (800) 848-9866
email: corp@htamericas.com
www.hellermann.tyton.com
TS16949, ISO 9001, and ISO14001 certified

HellermannTyton Canada

Unit #4, 205 Industrial Parkway North
Aurora, Ontario L4G 4C4 Canada
Phone: (800) 661-2461
Fax: (800) 390-3904
email: sales@hellermanntyton.ca

HellermannTyton Mexico

Anillo Periferico Sur 7980 Edificio 6A
Parque Industrial Tecnologico II
Santa María Tequepexpan
Tlaquepaque, Jalisco, Mexico 45601
Phone: 011-52-33-3-133-9880
Fax: 011-52-33-3-133-9861
email: info@htamericas.com.mx
ISO 9001 certified

Warranty Policy

HellermannTyton products are warranted to be free from defects in material and workmanship at the time sold by us; but our obligation under this warranty and that of the seller is limited to the replacement of the product, and neither we nor the seller are bound by any other warranty, expressed, implied or statutory. Under no circumstances are we or the seller liable for any loss, damage, expenses or consequential damages of any kind arising out of the use or inability to use these products. All are sold with the understanding that the user will test them in actual use and determine their adaptability for the intended uses.

HellermannTyton

