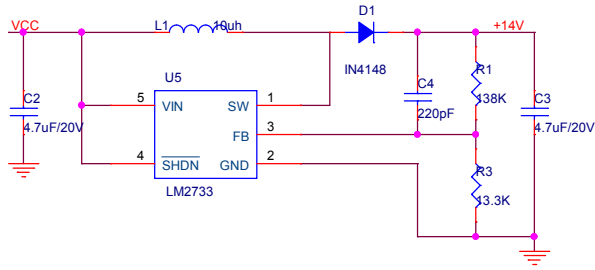
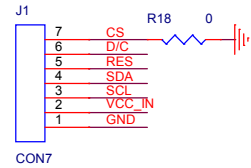
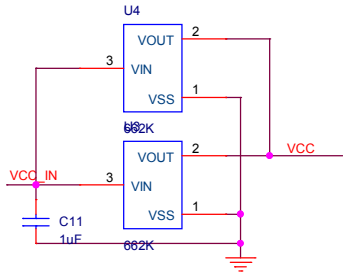


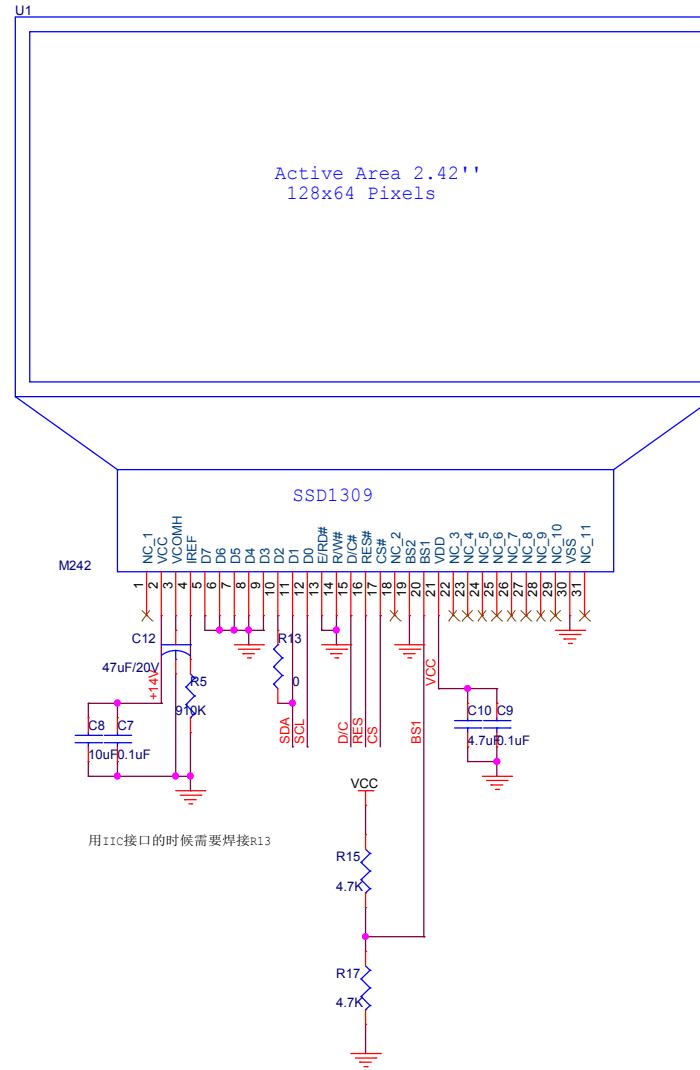
# 2.42'' 128\*64单色OLED驱动板



R18默认不焊接；如不想用CS脚；需要焊接R18将CS接地



IIC            R15  
4-WIRE SPI    R17



Title		
0308-128*64单色OLED驱动板		
Size	Document Number	Rev
B	<Doc>	V 1
Date:	Monday, July 20, 2015	Sheet 1 of 1