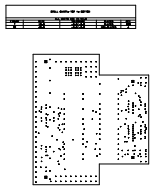


NOTES: UNLESS OTHERWISE SPECIFIED

1. FABRICATE IN ACCORDANCE WITH LATEST IPC-6012 SPECIFICATIONS, CLASS 2.
2. ACCEPTABILITY SHALL BE BASED ON LATEST IPC-A-600 SPECIFICATIONS, CLASS 2.
3. ALL BASE MATERIAL ACCORDANCE WITH MIL-STD-883C, TEST METHOD 2000. SPECIFICATIONS FOR CORE MATERIALS ARE REGISTERED LIMITATES PER LATEST IPC-4121 SPECIFICATIONS.
4. MATERIAL TO BE 6105 TENSILE STRENGTH EPOXY GLASS, ISOLA 370 HP OR EQUIVALENT WITH A MINIMUM OF UP TO 170C.
5. AFTER FABRICATION THE TOTAL LAYER COUNT SHALL BE 9.
6. FLAMMABILITY RATINGS SHALL BE IN ACCORDANCE WITH UL 94V-0 (OR 94V-1 IF 94V-0 MATERIAL IS UNAVAILABLE), AS MANDATED BY STANDARDS UL1001-1A, IEC60101-1 AND EN50101-1.
7. MICROINCH ROUGHNESS NICKEL IMMERSION GOLD (ENIG) WITH A NORMAL 3-7 MICRO-INCH IMMERSION GOLD OVER 150-200 MICRO-INCH IMMERSION NICKEL ON ALL EXPOSED TRENCHES AND FEATURES.
8. FRONT AND BACK PATTERN SHALL REGISTER WITHIN .003.
9. HOLE CENTERS LOCATED ON PAD'S AND CIRCLES WITHIN .003' RPD.
10. CONDUCTOR EDGES TO BE FREE OF LOOSE SILVERS AND ROUGH EDGES.
11. BOARD DIMENSIONS, DRILL HOLE WIDTHS AND CIRCUITRY SHALL VARY MORE THAN 0.002" FROM THE 1:1 DIMENSIONS OF THE MASTER PATTERN.
12. ALL LAYER CONSTRUCTION SHALL BE IN ACCORDANCE WITH THE SPECIFICATION DIRECTIVE IN DETAIL "A".
13. ALL TOOLING HOLES MUST BE DRILLED DURING PRIMARY DRILL STAGE, SECONDARY DRILL STAGE SHALL NOT BE PERMITTED.
14. BOW AND TWIST SHALL NOT EXCEED 0.0075" PER INCH OF LENGTH.
15. ALL PLATED THRU HOLES AND CONDUCTIVE SURFACES SHALL BE PLATED WITH A MINIMUM THICKNESS OF .001.
16. HOLE SIZES ARE AFTER PLATING.
17. HOLE SIZES TO BE IDENTIFIED TO GENERAL SHALL BE CLEANED AND FREE OF CONTAMINANTS OR RESIDUES.
18. SOLDEMPACT: SHALL BE GREEN LIQUID PHOTO-IMAGEABLE (LPI) PER LATEST IPC-SM-840 SPECIFICATIONS, CLASS-B, CATEGORY 3 REGISTRATION. HOLE SIZES TO BE IDENTIFIED TO GENERAL SHALL BE PRINTED USING NON-CONDUCTIVE PERMANENT INK ON XPC COLOR: WHITE.
19. PRINTING REGISTRATION ALLOWANCE IS 0.005". THERE SHALL BE NO POX ANY OTHER PAPER OR LAND.
20. HOLE SIZES SHALL BE COMPENSATORILY TESTED TO THE NET LIST USING IPC-D-358 FOR CONTINUITY OPENS AND SHORTS.
21. THE PHOTOMASK MAY BE EMPLOYED FOR ETCHING ALLOWANCES ONLY. A 1:1 RELATIONSHIP MUST BE APPARENT BETWEEN MEMBERS SUBMITTED AND FINAL PRODUCT. IT IS PROHIBITED TO IMPLEMENT THE USE OF FILLETING OR TEAR DROP TECHNOLOGY ON VIAS IN PREVENTING HOLE WALL EDITS FROM OCCURRING. DATA FOR CHANGING FILING SIZES .002" NOT BE PERMITTED.
22. NO CHANGES CAN BE MADE WITHOUT A DEVIATION NOTICE.
23. ALL HOLE SIZES AND HOLE SPACING SHALL COMPLY WITH THE SPECIFICATION DIRECTIVE 2002/95/C.
24. THE FABRICATED BOARD SHOULD BE ROHS COMPLIANT.
25. BOARD CONSISTS CUT-OUTS, THOSE DIMENSIONS ARE PRESENT IN THE DETAIL B.
 - MINIMUM CUT-OUT WIDTH: 0.5 MILLS
 - MINIMUM SPACING: 4.5 MILLS
 - MINIMUM DRILL-PAD SIZE: >10.20 MILLS.
26. SILK SCREEN SHOULD BE RETAIN, IF ITS OVERLAP ON VIA
26. THE ENTER BOARD SHOULD BE SOE IMPEDANCE MATCHED



FX3DVK TO HSMC BRIDGE	REV:1.0
DOCUMENT NAME: DRILL DRAWING	
P/N-XXXXXXXXXX	ASSMB NO--XXXXXXXXXX



UNLESS OTHERWISE SPECIFIED ALL DIMENSIONS ARE IN <input type="checkbox"/> INCHES <input checked="" type="checkbox"/> MILLIMETERS		AGILE SOLUTIONS	
DESIGNED BY : AgileSolutions		DRAWING TITLE FX3 DVK TO HSMC BRIDGE	
DATE 14/06/2013	SIZE SCALE 1:1	PART NUMBER XXXXXXXXXXXX ASSUM NO. -XXXXXXXXX	REV 1.0 SHEET 1 OF 1

CAD DATA , DO NOT MANUALLY UPDATE