

Configuring the Agilent PNA Family of Network Analyzers for SICL-LAN communication with National Instruments' Measurement and Automation Explorer (Version 4.3)



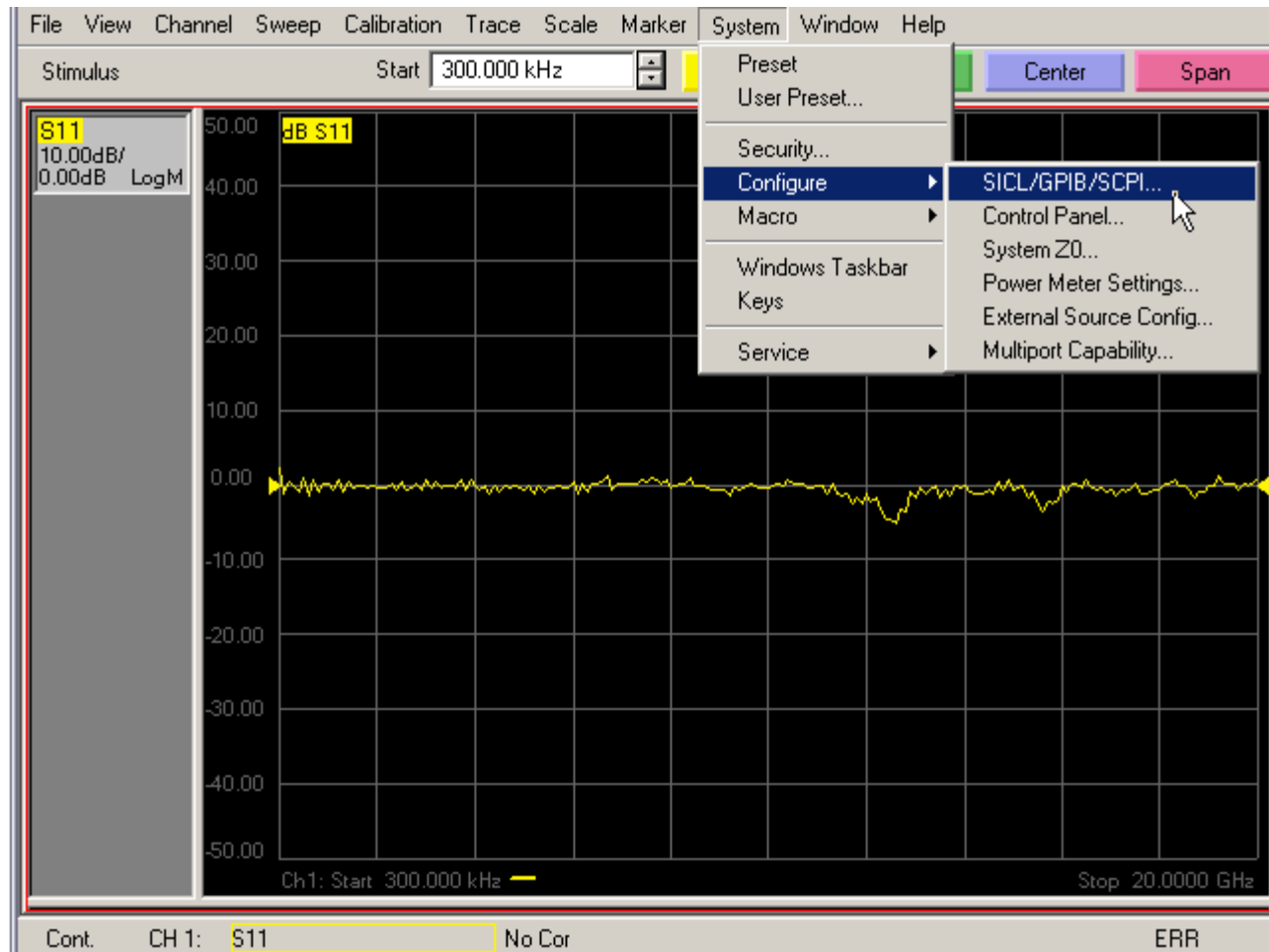
Agilent Technologies

Step 1: Configuring the PNA



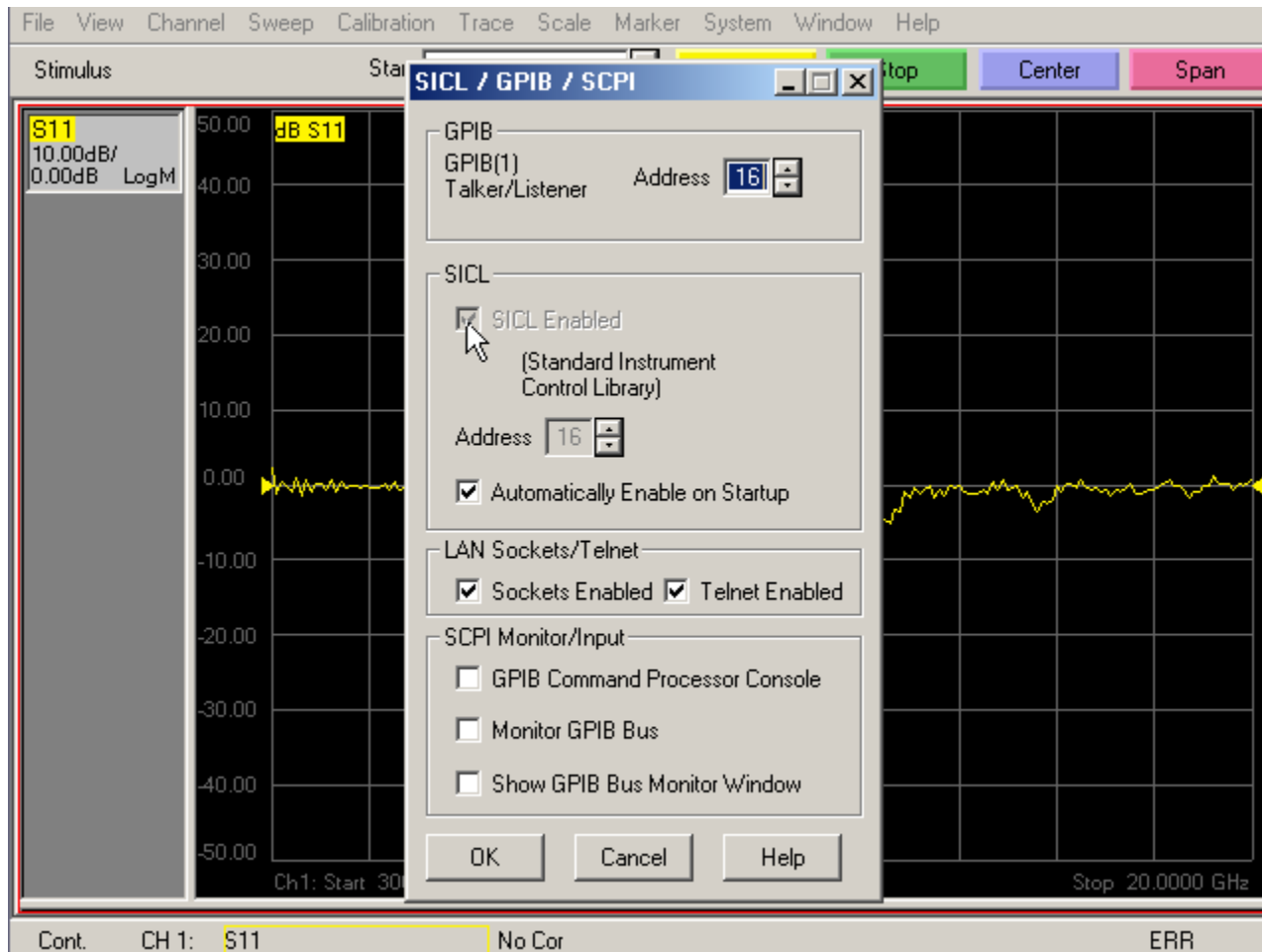
Agilent Technologies

Configure the SICL-LAN Interface



Agilent Technologies

Select the “SICL Enabled” check box.



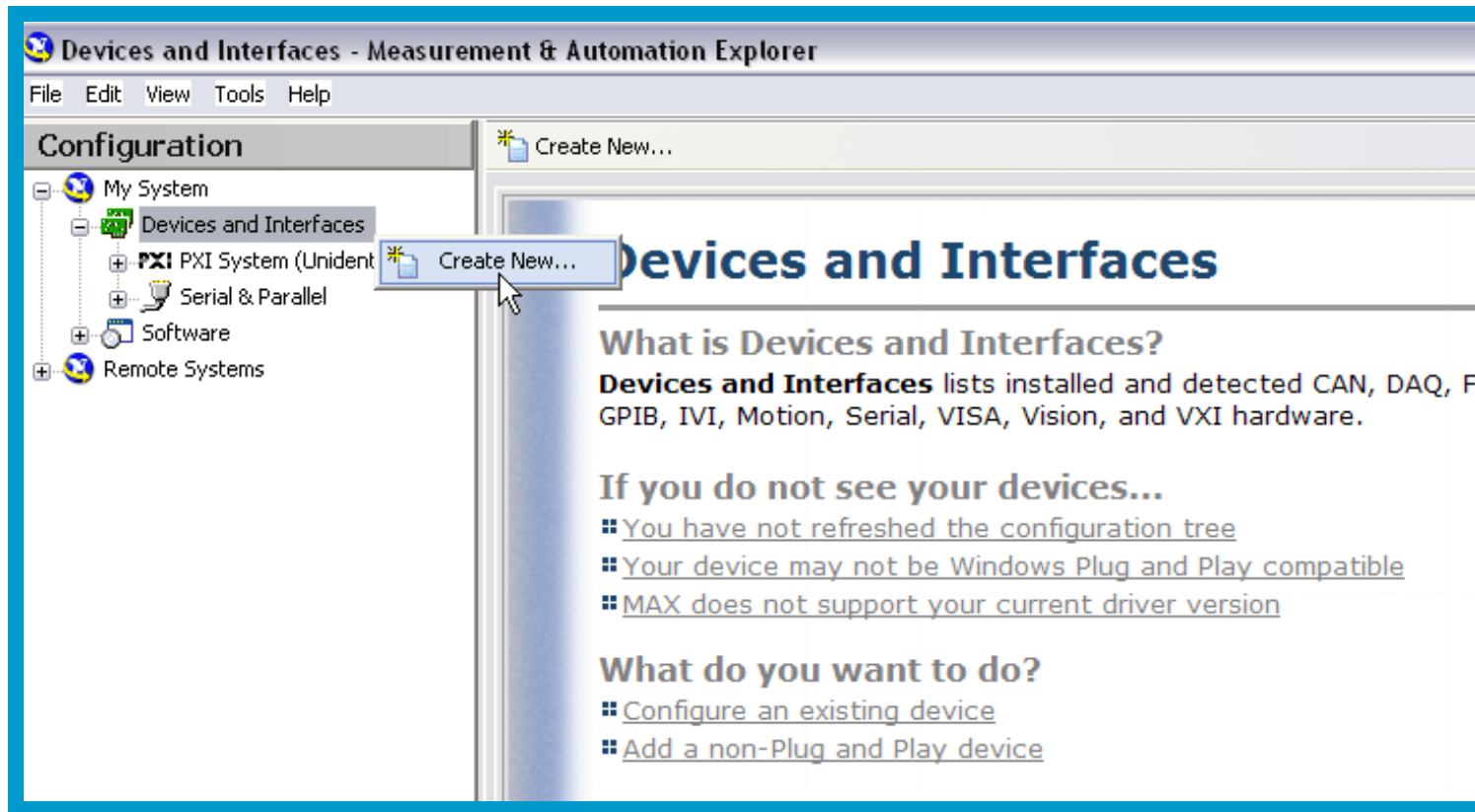
If you plan to use this as the normal mode, then also “Check” the “Automatically Enable on Startup”

Step 2: Configure Measurement and Automation Explorer



Agilent Technologies

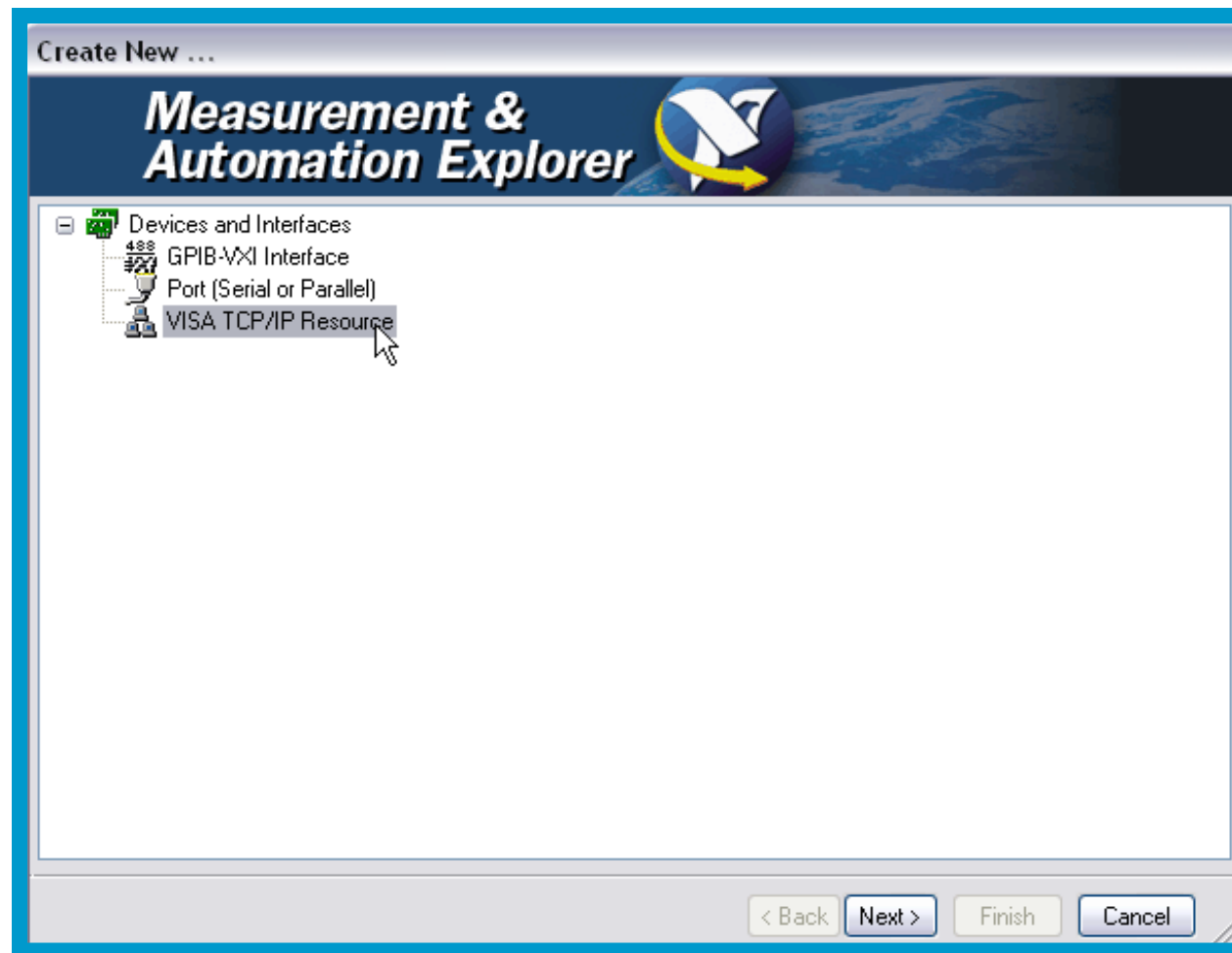
Create a New Interface



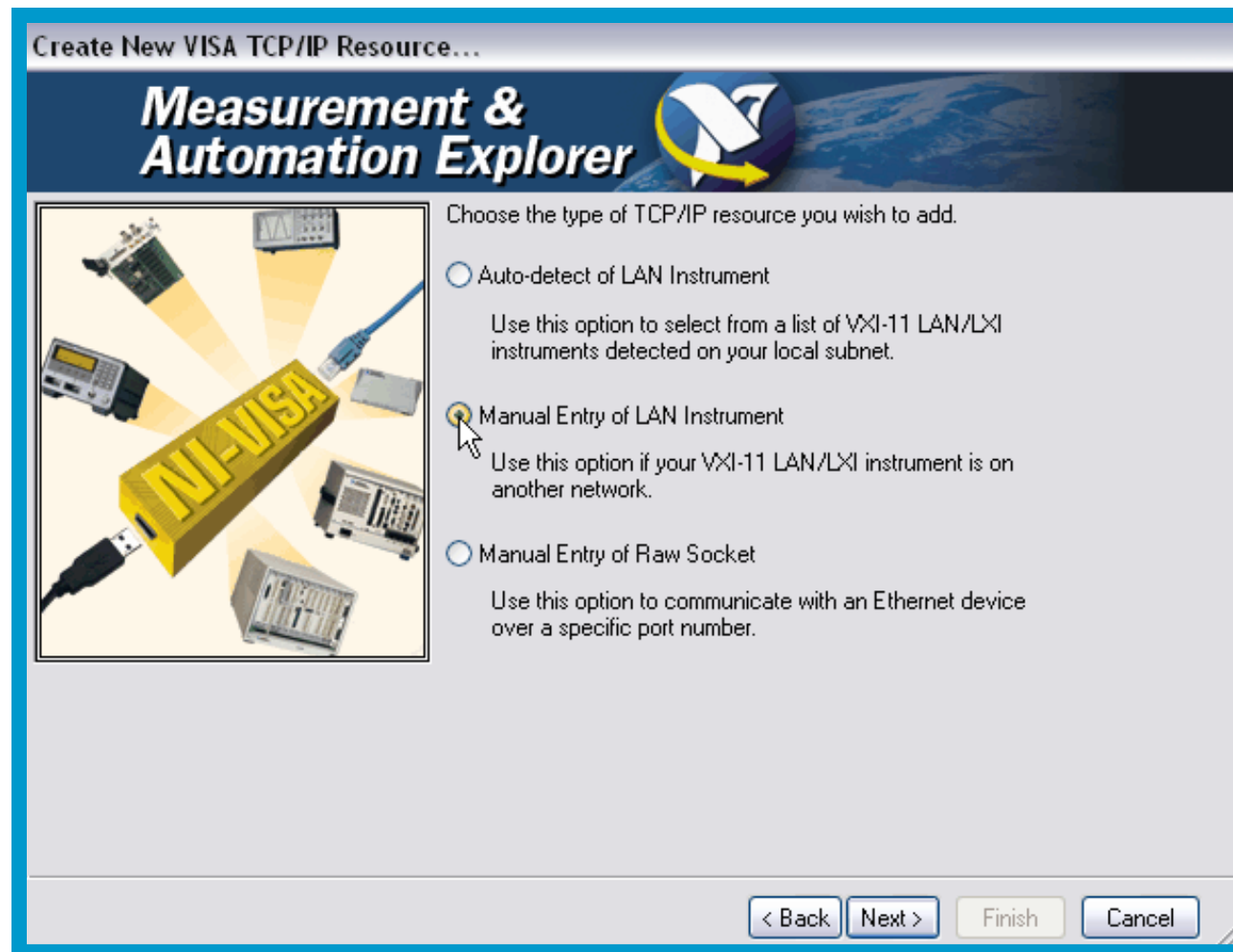
- Right click on Devices and Interfaces and select “Create New...”



Select to Create a new “VISA TCP/IP Resource”



Select “Manual Entry of LAN Instrument”



Enter PNA Information then select the “Validate” button to test communication

Create New VISA TCP/IP Resource...

Measurement & Automation Explorer

Enter the TCP/IP address of your VISA network resource in the form of xxx.xxx.xxx.xxx, the hostname of the device, or a computer@some.domain. The LAN device name is often "inst0" or "gpib0,1".

Hostname or IP address
PNA-Columbia-Q2

LAN Device Name
hpib7,16

Validate

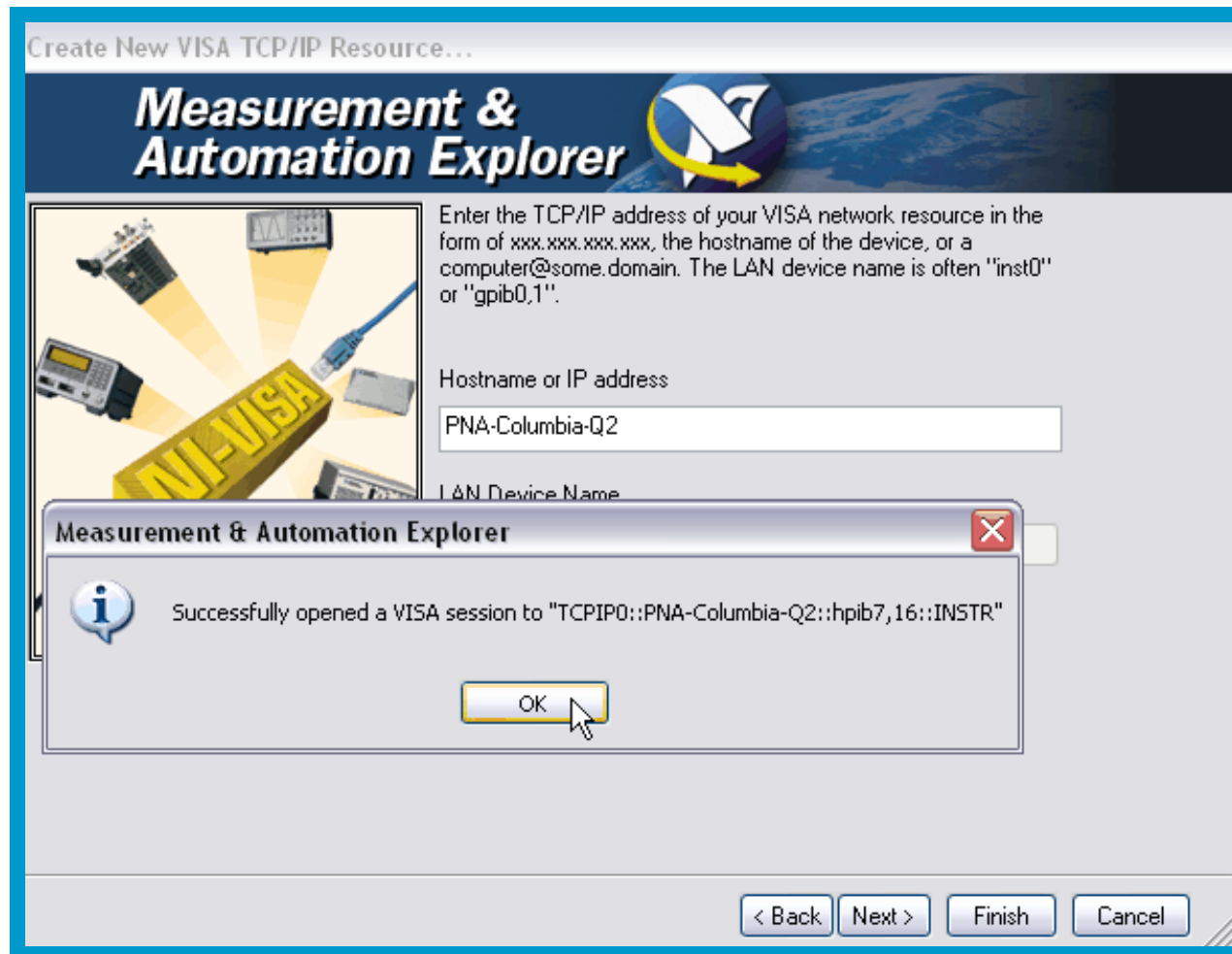
< Back Next > Finish Cancel

This is the host name or IP Address of the PNA that the PC being configured can successfully ping

The LAN Device Name for the PNA should always be “hpib7,16” unless the SICL Address was changed in the PNA

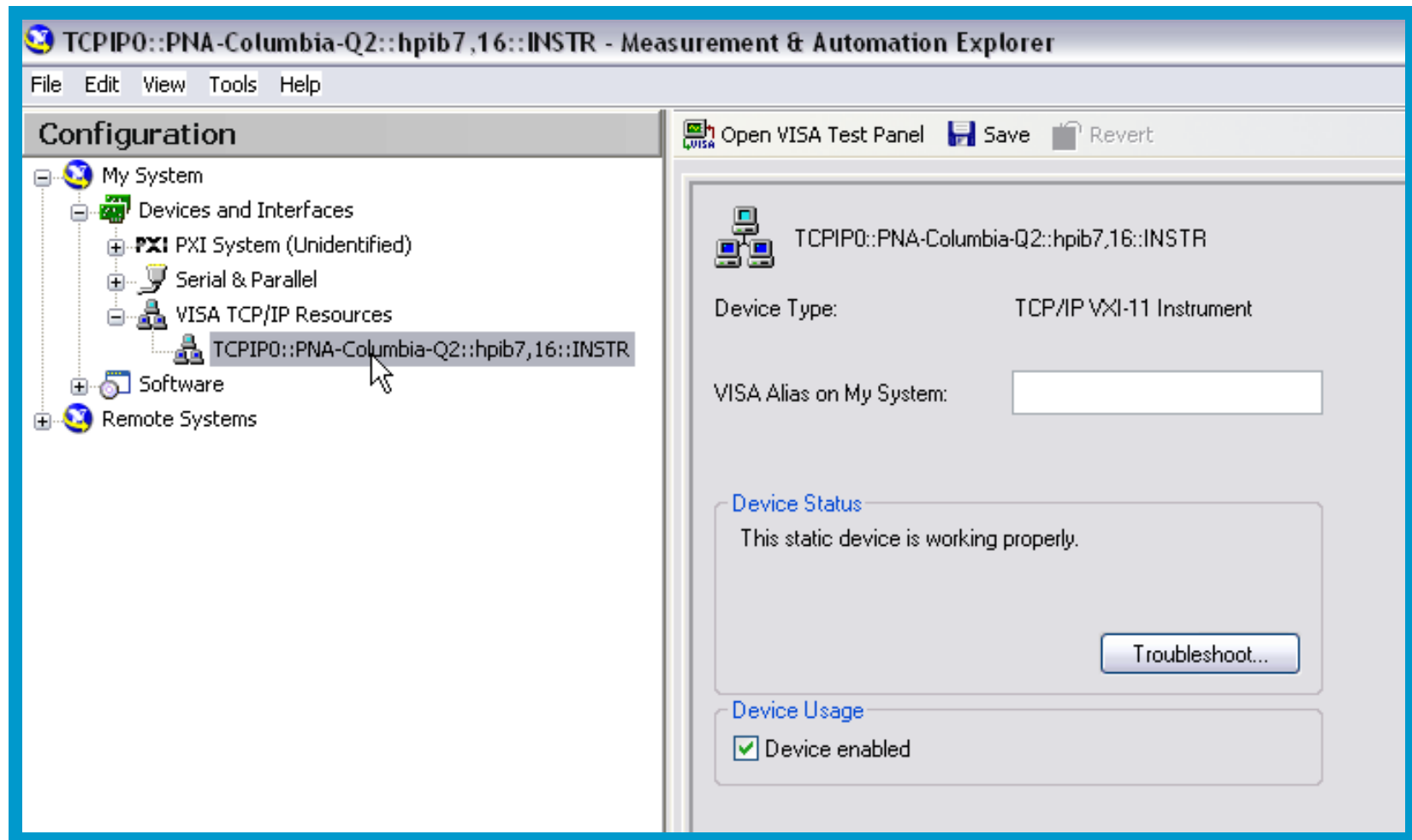


The validation response should look similar to this



Agilent Technologies

The MAX configuration window should now list a resource under VISA TCP/IP Resource as below

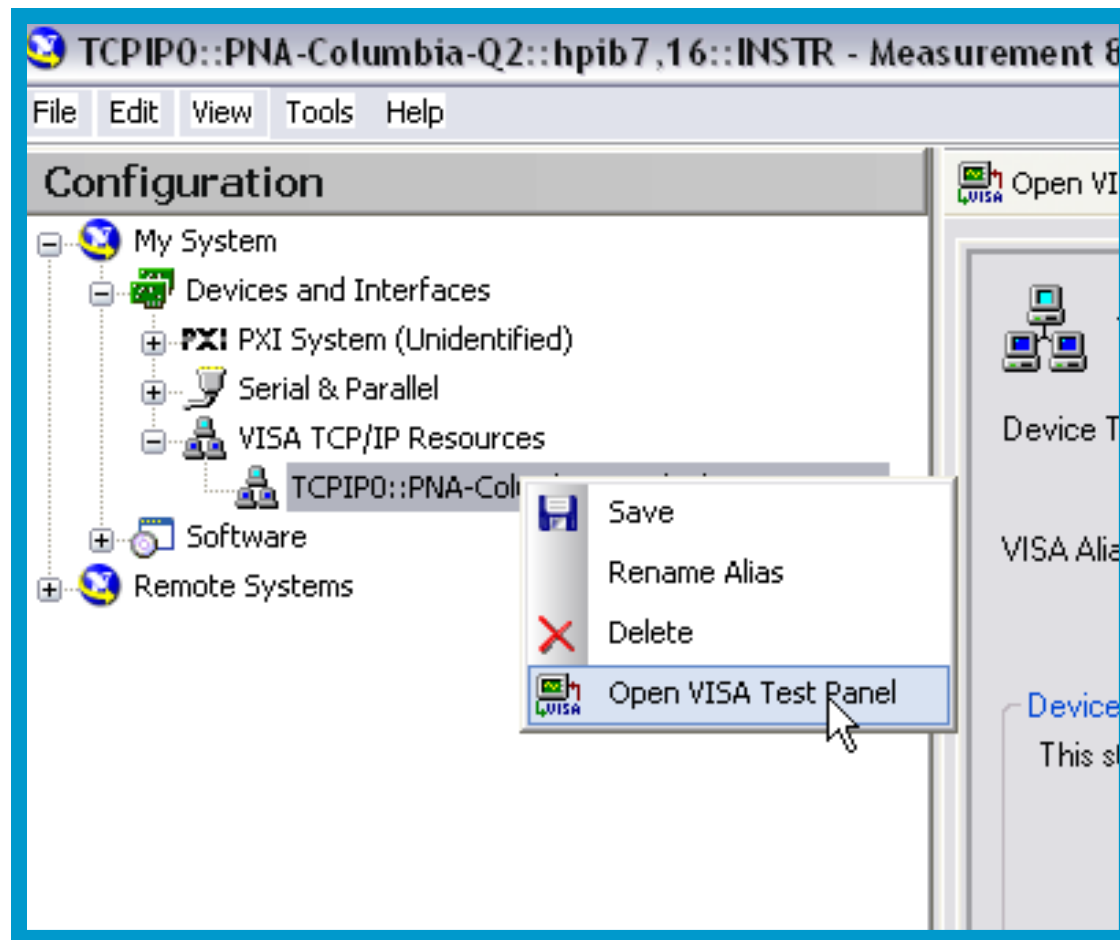


Final Connection Verification



Agilent Technologies

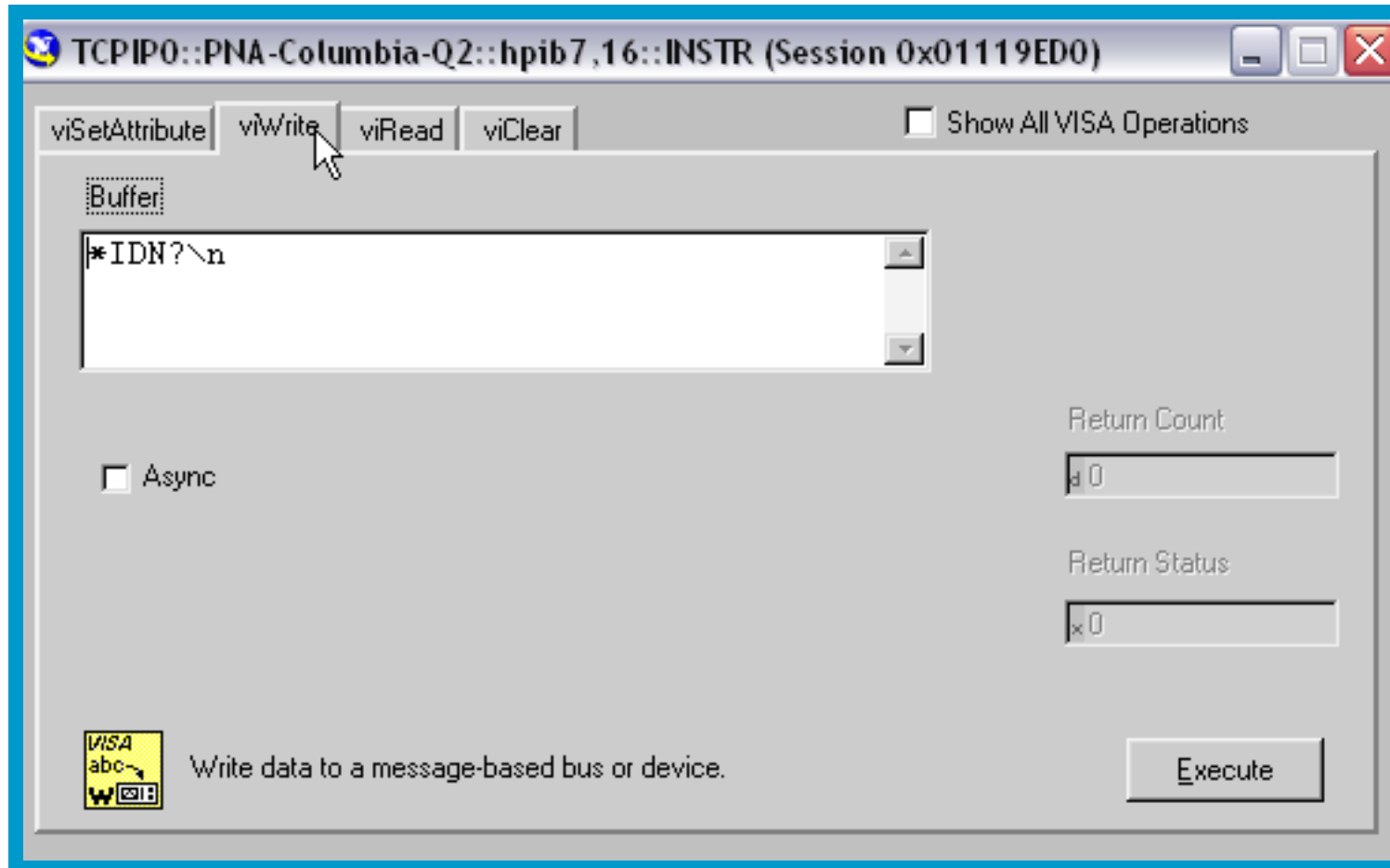
Open a VISA Session to the Instrument



- Right click on the new device and select “Open VISA Test Panel”

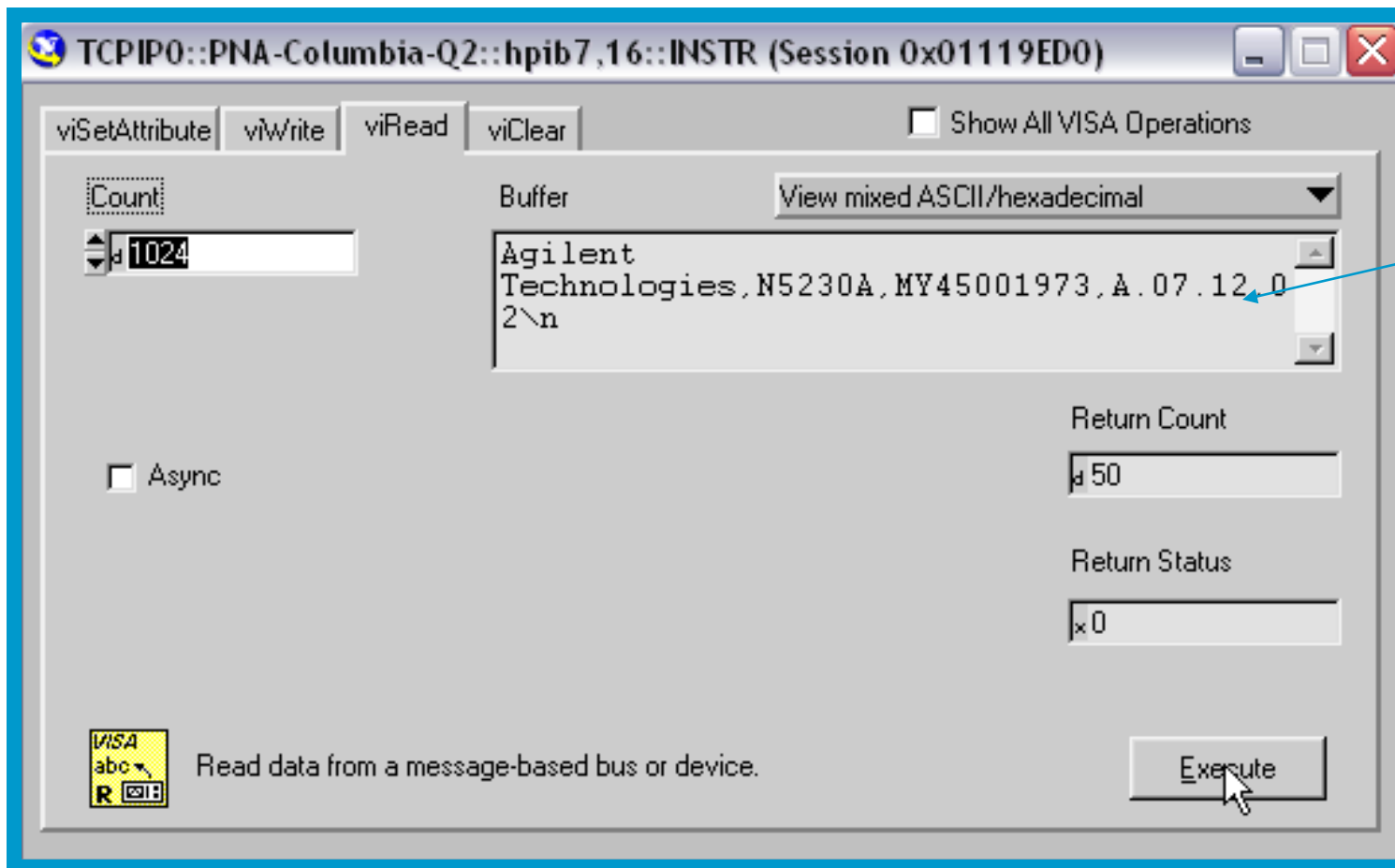


Select the “viWrite” tab at the top of the Window and then “Execute” the default “*IDN?\n” command



Agilent Technologies

Select the “viRead” tab at the top of the Window and “Execute” the default 1024 byte read.



You should receive the ID string back from the PNA to which you are connected



Agilent Technologies