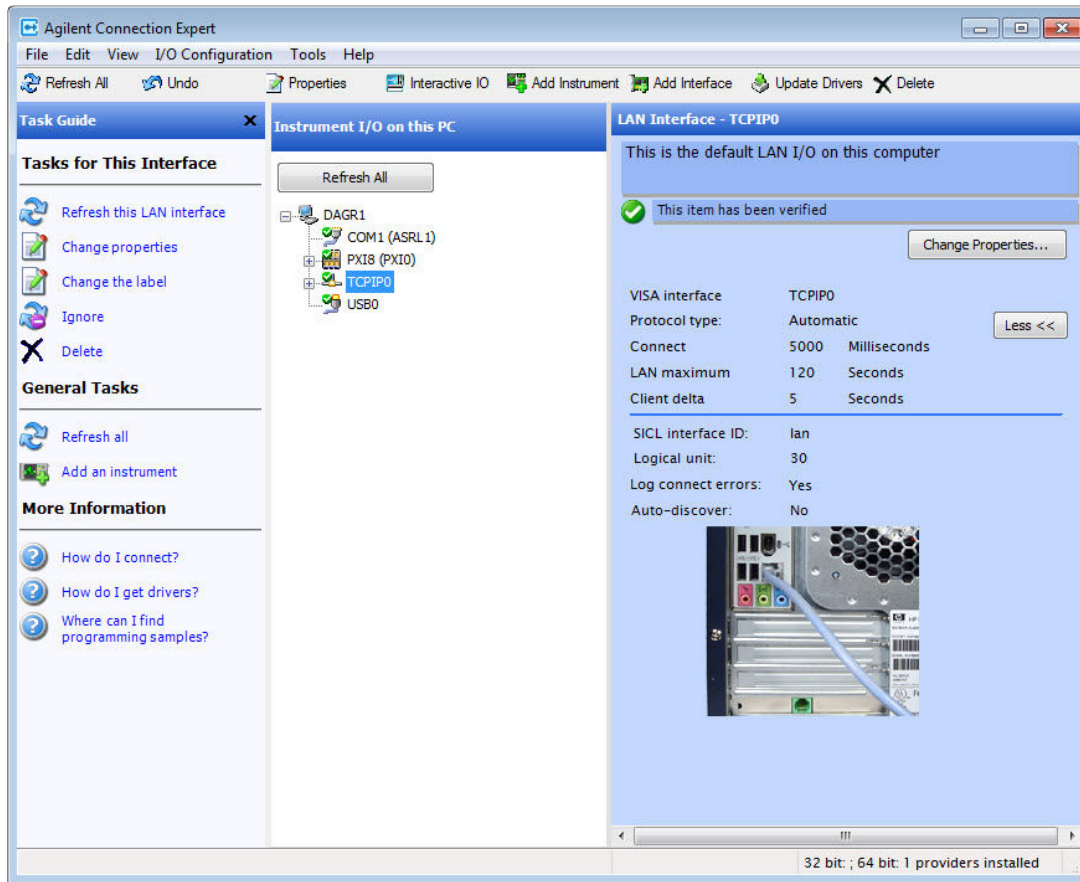


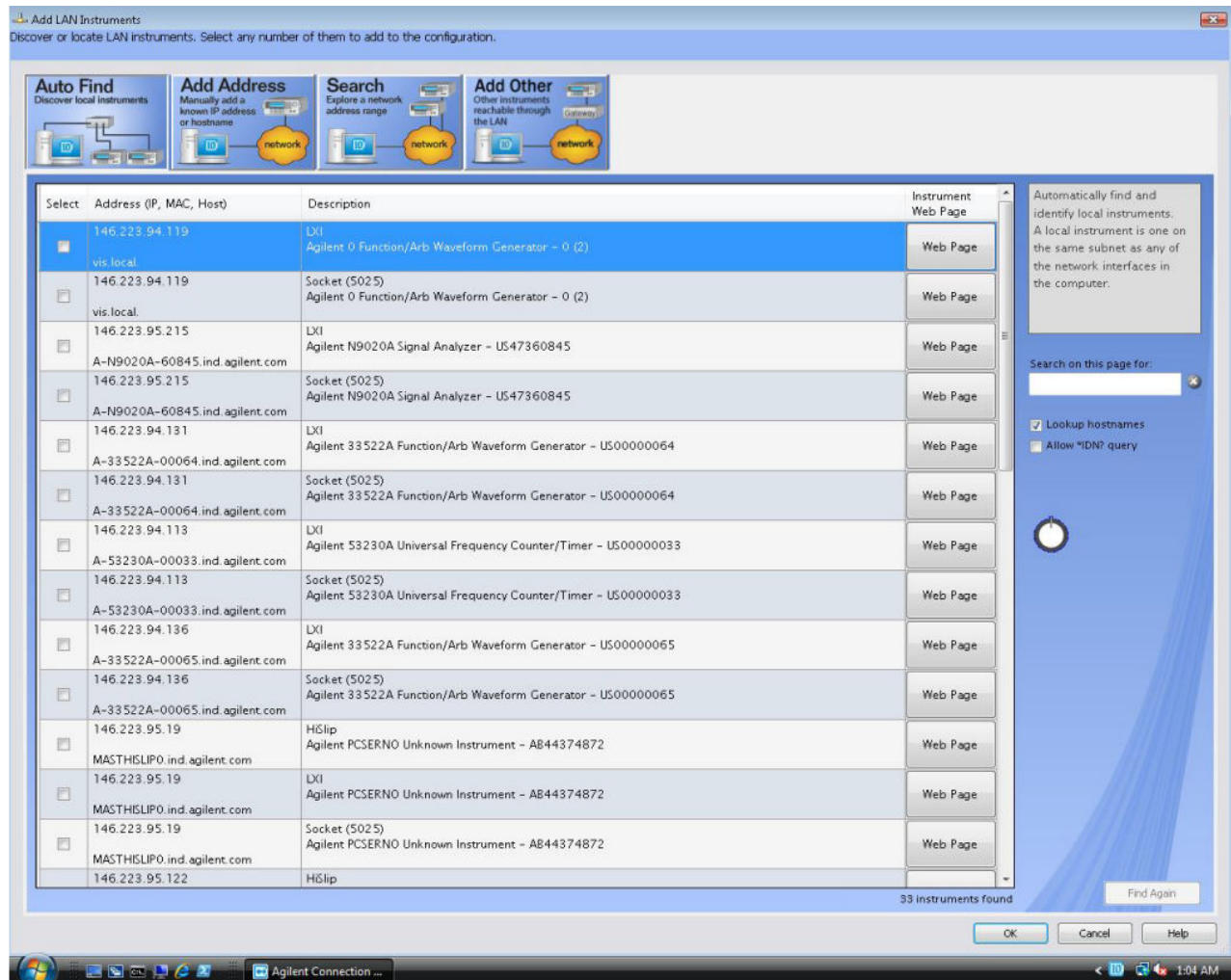
### Finding LAN Instruments

To have Agilent's Connection Expert search for LAN instruments:

1. Select the LAN (TCPIPn) interface in the Connection Expert Explorer Pane.



Click on **Add Instrument** (from either Task Guide, the top menu bar or right click on the LAN TCPIPn) to search for instruments on your local subnet. This opens the Add LAN Instruments dialog (see below) with the Auto Find tab preselected.



Agilent Connection Expert automatically identifies the LAN instruments (and removes non-instruments) on your local subnet and lists them in the display. From this display, select Web Page to view the instrument's web page for configuration.

- Click the **Select** check box for each instrument you want to include as part of your test system. Click the **OK** button to verify each selected instrument and add it to the Connection Expert Explorer Pane. Instrument properties are enumerated in the Connection Expert Properties Pane.

**Note:** You can add a LAN instrument to one LAN interface only. You cannot add the same LAN instrument to multiple LAN interfaces.

#### If Connection Expert Did Not Find an Instrument...

If all the instrument(s) you want to include are on the same local subnet as your PC, the Connection Expert Auto Find (default tab) should discover each instrument. If it did not find one or more instruments:

- Connection Expert's **Auto Find** or **Search** discovers HISLIP, LXI, SICL-LAN, and VXI-11 devices. Typically, socket-based devices will not be found unless they broadcast their capabilities via mDNS (multicast Domain Name Service). You can use **Add Address** to manually add a device that is not discovered by **Auto Find** or **Search**.
- Verify that AutoIP is not used in any instrument AND if your PC has multiple Network Interface Cards (NICs), that each NIC has a different network address.
- If instrument(s) are not on the same local subnet as the PC and you know the instrument IP address or hostname, use the **Add Address** tab.
- If instrument(s) are not on the same local subnet as the PC and you don't know the instrument IP address or the Hostname, use the **Search** tab.
- To find GPIB or USB instruments on a LAN gateway (such as the Agilent E5810) or portal, refer to [Searching for Remote Instruments on LAN](#).
- If your browser cannot reach [local instruments](#) (i.e., cannot access the instrument web page).

**See Also:**

[SICL-LAN](#)

[Windows Firewalls](#)