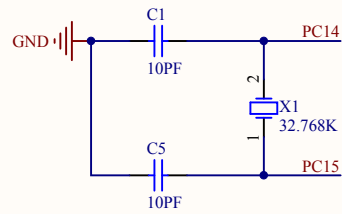
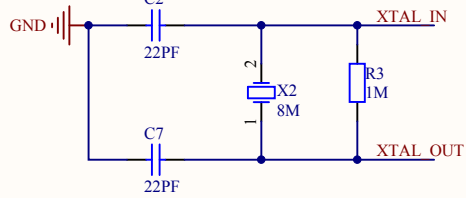
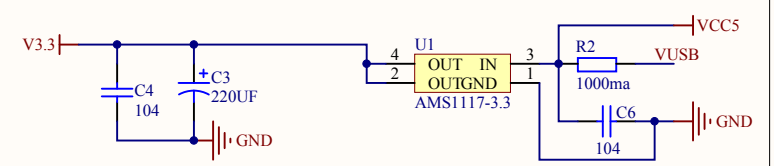


OUT_CLOCK

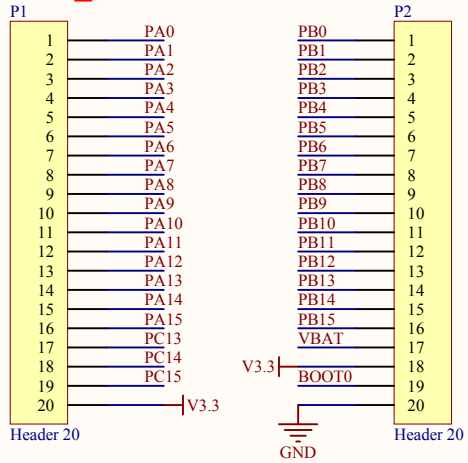


LED_PWR

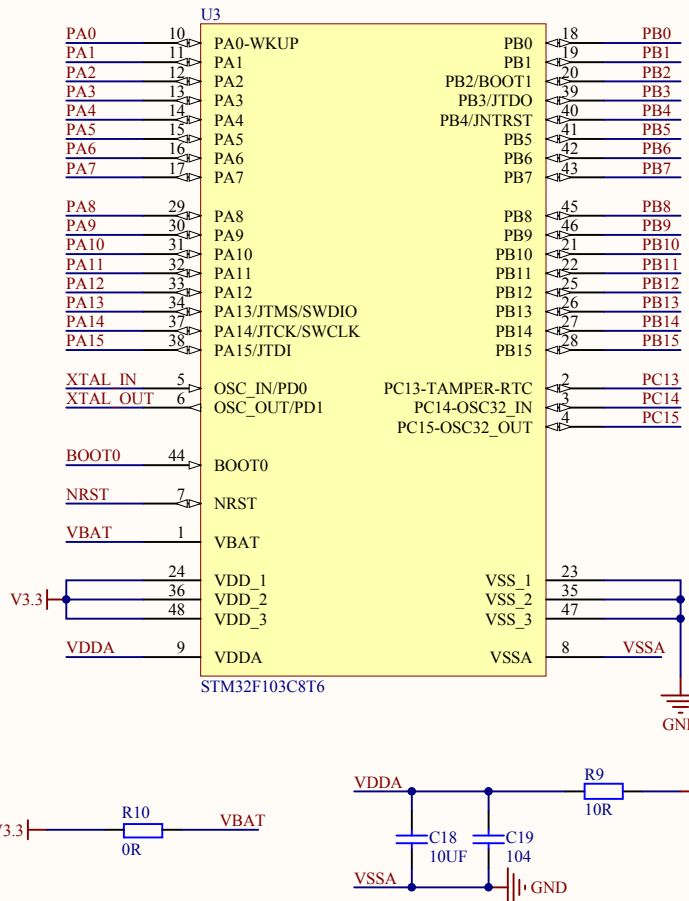
PWR_DOWN_3V3



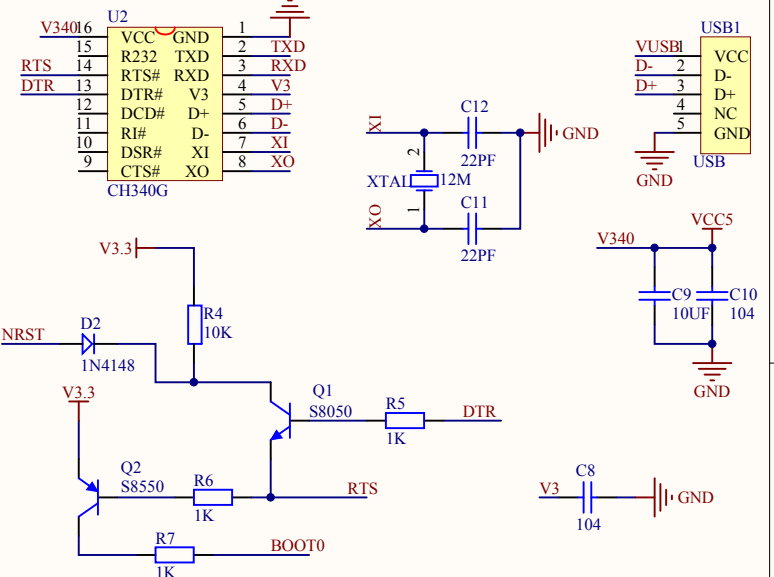
Pin_20*2



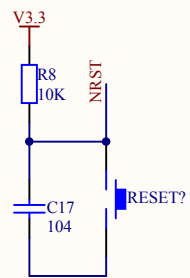
MCU



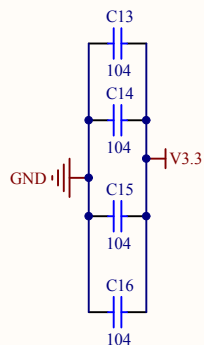
USB_USART



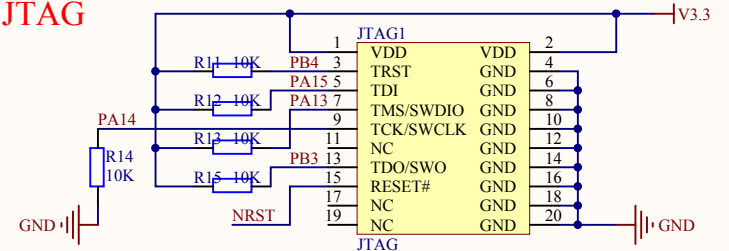
RESET



PWR_FILTER



JTAG



Title		
Size	Number	Revision
A4		
Date:	2016/4/14	Sheet of
File:	D:\Altium Designer 9...\Sheet1 second.SchDown By:	

Comment	Description	Designator	Footprint	LibRef	Quantity
XTAL	晶振	12M	XTAL	XTAL_M	1
10PF	无极性电容	C1, C5	0603C	Cap	2
22PF	无极性电容	C2, C7, C11, C12	0603C	Cap	4
220UF	极性电容	C3	CAP_SMD_3216	Cap pol	1
104	无极性电容	C4, C6, C8, C10, C13, C14, C15, C16, C17, C19	0603C	Cap	10
10UF	无极性电容	C9, C18	0603C	Cap	2
Diode	二极管	D1	SMA	Diode	1
1N4148		D2	DIODE_SOP	D	1
JTAG		JTAG1	JTAG_20	JTAG	1
Header 20	Header, 20-Pin	P1, P2	HDR1X20_3D	Header 20	2
S8050	NPN型三极管	Q1	TO-92_	NPN	1
S8550	PNP型三极管	Q2	TO-92_	PNP	1
510R	电阻	R1	0603R	Res_	1
1000ma		R2	0603P	R	1
1M	电阻	R3	0603R	Res_	1
10K		R4, R11, R12, R13, R14, R15	0603P	R	6
1K	电阻	R5, R6, R7	0603R	Res_	3
10K	电阻	R8	0603R	Res_	1
10R	电阻	R9	0603R	Res_	1
0R		R10	0603P	R	1
KEY_M		RESET?	KEY_M	KEY_M	1
AMS1117-3.3		U1	AMS1117	AMS1117	1
CH340G	USB2UART	U2	SOP16M	CH340G	1
STM32F103C8T6	STM32 ARM-based 32-bit MCU with 64 Kbytes Flash, 48- pin LQFP, Industrial Temperature	U3	LQFP48_N	STM32F103C8T6	1
USB		USB1	USB/SM0.8-6H5	USB5	1
32.768K	晶振	X1	XTAL_YUANZHU	XTAL_M	1
8M	晶振	X2	XTAL	XTAL_M	1