

SPECIFICATION OF SURFACE MOUNT TYPE

1 .TYPE	DST310S
2 .NOMINAL FREQUENCY	32.768 kHz
3 .OVERTONE ORDER	Fundamental
4 .LOAD CAPACITANCE(CL)	12.5 pF
5 .FREQUENCY TOLERANCE	$\pm 20 \times 10^{-6}$ (at $25 \pm 3^{\circ}\text{C}$)
6 .DRIVE LEVEL	0.2 $\mu\text{W} \pm 20\%$ (1 μW max.)
7 .SERIES RESISTANCE	80 k Ω max. (at CL=Series)
8 .TURNOVER TEMPERATURE	$+25 \pm 5^{\circ}\text{C}$
9 .PARABOLIC COEFFICIENT	$-0.04 \times 10^{-6} / ^{\circ}\text{C}^2$ max.
10 .OPERATING TEMPERATURE RANGE	$-40 \sim +85^{\circ}\text{C}$
11 .STORAGE TEMPERATURE RANGE	$-40 \sim +85^{\circ}\text{C}$
12 .SHUNT CAPACITANCE(C0)	1.3 pF Typ.
13 .INSULATION RESISTANCE	500 M Ω min. (at DC 100 \pm 15V)
14 .TAPING	3000 pcs/reel
15 .DIMENSIONS	Refer to Fig-1

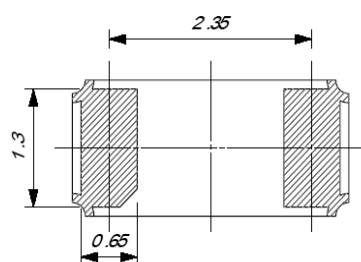
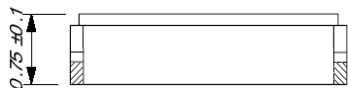
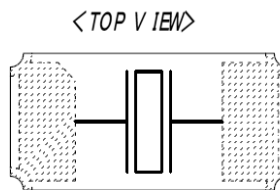
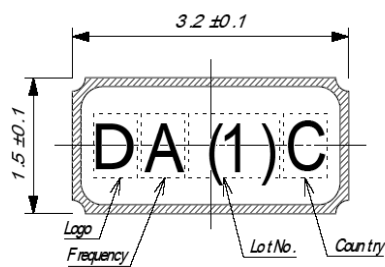


Fig.-1

DA (1) C

D : manufacturer's code
A : Nominal Frequency
(1) : Lot. No.
C : The place of origin