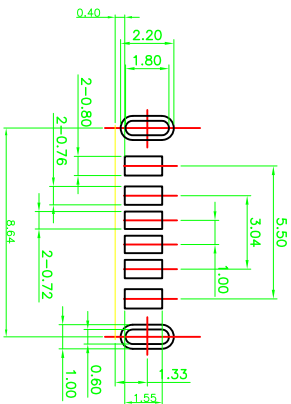
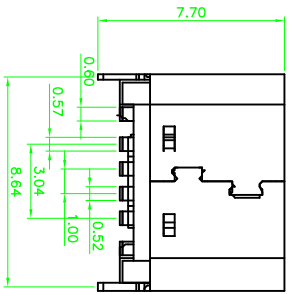
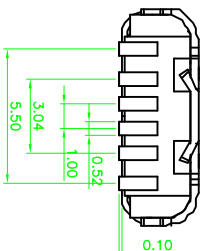
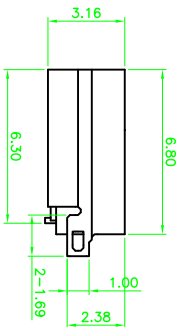
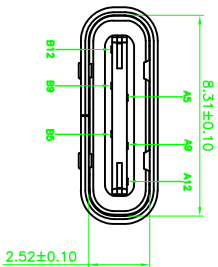
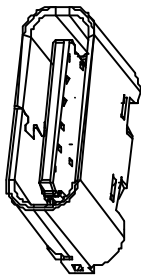
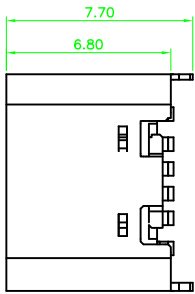


1 ROHS

MAPX	MODIFICATION	DRW	DATE



RECOMMENDED PCB LAYOUT
TOLERANCE UNSPECIFIED ±0.05mm

B12	GND
B9	VBUS
B5	CC2
A5	CC1
A9	VBUS
A12	GND
PIN	SIGNAL NAME

- NOTE:
- MATERIAL SPECIFICATION
 - HOUSING : HIGH TEMPERATURE RESISTANT PLASTIC UL94 V-0
 - CONTACTS : COPPER ALLOY
 - MID PLATE : STAINLESS STEEL
 - FRONT SHELL : STAINLESS STEEL
 - PLATING SPECIFICATION
 - CONTACTS :
 - 2-1. CONTACTS :
 - NI 50μ" MIN. UNDER PLATED OVER ALL.
 - Au PLATED ON THE FUNCTIONAL AREA OF CONTACT (GOLD PLATING THICKNESS FOLLOW THE P / N)
 - 2-2. FRONT SHELL. SEE TABLE!
 - 2-3 SHIELD PLATE & EMI PLATE CLEAR ONLY
 - MECHANICAL PERFORMANCE:
 - 3-1. INSERTION FORCE : 0.5~2.0 kgf.
 - 3-2. REMOVAL FORCE : 0.8kgf~2.0Kgf
 - 3-3 DURABILITY : 5000 CYCLES.
 - ELECTRICAL PERFORMANCE,
 - 4-1. CURRENT RATING : 3.0A VOLTAGE RATING. 5.0V
 - 4-2. L1CR.
 - VBUS GND PINS AND OTHER PINS : 40m / PIN MAX
 - SHIELD : 50mq / MAX
 - L1CR MAX. CHANGE OF ALL PINS : 10m Ω
 - 4-3. INSULATION RESISTANCE : 100MΩ MIN
 - 4-4 DIELECTRIC WITHSTAND VOLTAGE, AC 100V FOR 1 MINUTE.
 - ENVIRONMENTAL PERFORMANCE
 - 5. OPERATING TEMPERATURE : -25C. + 85C
 - 6. IR REFLOW
- THE PEAK TEMPERATURE ON THE BOARD SHALL BE MAINTAINED FOR 10 SECONDS AT 260C.

产品图
公差一览表

公差	公差	公差	公差
X	±0.25	X	±5°
X	±0.20	X	±2°
XX	±0.15	XX	±1°
XXX	±0.10	XXX	±0.5°

深圳市精拓金电子有限公司
Shenzhen Jing Tuo Jin Electronics Co., Ltd.

单位	制图	审核	制图料号
UNITS	DRAWING	DRW	PRODUCT PART NO.
比例	SCALE	SCALE	产品名称
SCALE	SCALE	SCALE	PRODUCT NO.
日期	DATE	DATE	角法
DATE	DATE	DATE	VIEW
	核准	核准	版本
	APPROVED	APPROVED	VER