

MAPX	MODIFICATION	DATE
------	--------------	------

NOTES:

1. 材料

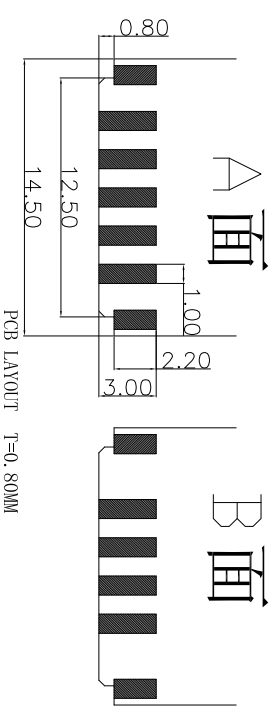
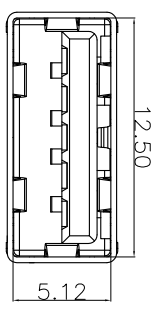
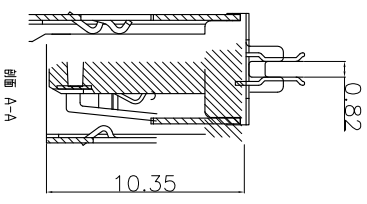
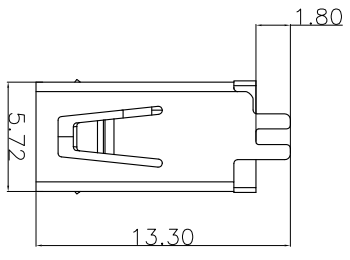
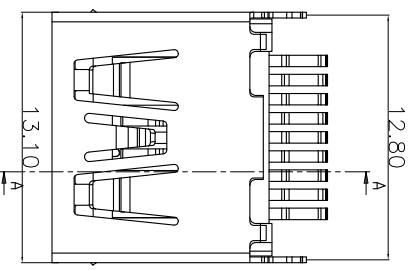
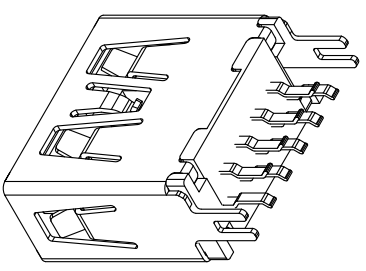
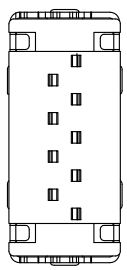
- 1.1: 外壳材质: 双光铁
- 1.2: 外壳电镀代码: 镀镍12H
- 1.3: 胶芯颜色代码: 蓝色
- 1.4: 胶芯材质&颜色: LCP蓝色
- 1.5: 端子材质: 磷铜.
- 1.6: 端子电镀: 半金锡G/F,

2. 产品规格:

- 2.1 额定电流: 1.5 A MIN 1PIN/4PIN 2.0A MAX
- 2.2 绝缘阻抗: 1000MΩ MIN;
- 2.3 接触阻抗: 30mΩ MAX;
- 2.4 耐电压: 500V AC;
- 2.5 工作温度: -55° C~+85° C

3. 插拔力性能要求:

- 3.1, 插入力: 3.57KgF Max;
- 3.2, 拔出力: 1.02KgF Min;
- 3.3, "*"为品管必须管控尺寸.
- 3.4, 整套成品配合需顺畅.



PCB LAYOUT T=0.80MM

产品图

深圳市精拓金电子有限公司

PRODUCT CHART DWG

公差一览表

TOLERANCE UNLESS OTHERWISE	公差一览表	单位 UNITS	MM	制图人 DRAWING	制料号号 PRODUCT PART NO
X ±0.35	X ±5°	比例 SCALE	1:1	审核 CHKD	产品名称 PRODUCT NO
X ±0.30	X ±2°	日期 DATE	2015-09-09	核准 APPD	USB A/F 3.0 180° 夹板无卷边
XX ±0.20	XX ±1°				
XXX ±0.10	XXX ±0.5°				

G 1 2 3 4 5 6 7 8 9 10 G

F 1 2 3 4 5 6 7 8 9 10 F

E 1 2 3 4 5 6 7 8 9 10 E

D 1 2 3 4 5 6 7 8 9 10 D

C 1 2 3 4 5 6 7 8 9 10 C

B 1 2 3 4 5 6 7 8 9 10 B

A 1 2 3 4 5 6 7 8 9 10 A