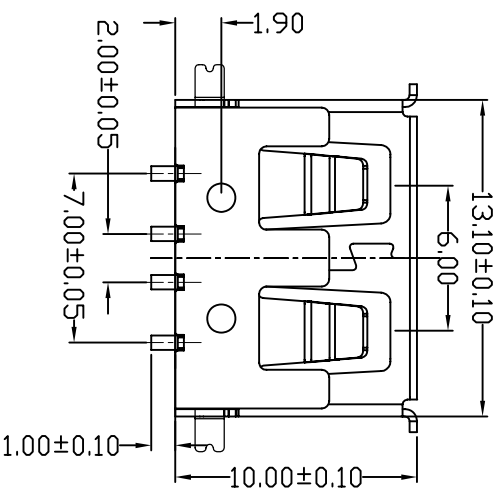
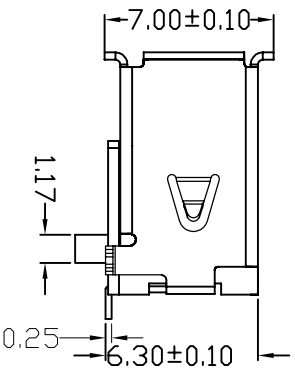
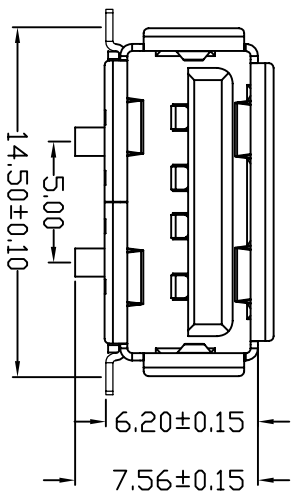
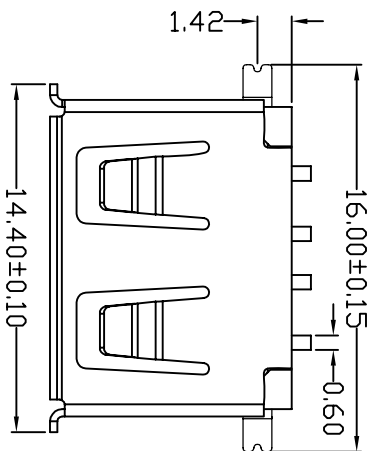


# 正向10.0前插后贴/6.20



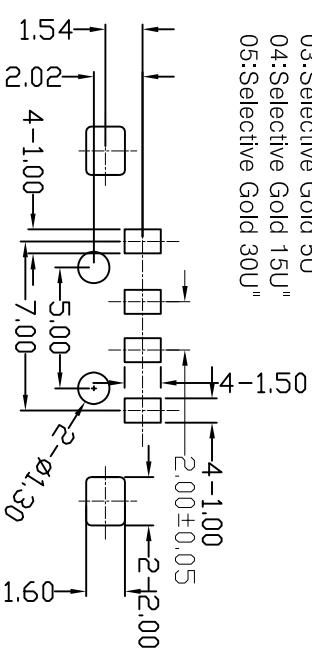
MAPX	MODIFICATION	DATE

NOTES:  
 1. HOUSING: SEE NOTES, UL94V-0.  
 TERMINAL: SEE NOTES.  
 SHELL: SEE NOTES.  
 SPECIFICATION:

1. ELECTRICAL CHARACTERISTIC:  
 CONTACT RESISTANCE: 30MΩ MAX  
 DIELECTRIC WITHSTANDING VOLTAGE: 500V AC FOR 1MIN  
 INSULATION RESISTANCE: 1000MΩ MIN  
 2. MECHANICAL CHARACTERISTIC:  
 INSERTION FORCE: 35N(3.57KGf) MAX  
 EXTRACTION FORCE: 10~35N(1.02~3.57KGf)MIN  
 DURABILITY: 1500 CYCLES EXTRACTION FORCE: 10~35N  
 5000 CYCLES MIN

3. ENVIRONMENTAL:  
 OPERATING TEMPERATURE: -55 °C+85 °C  
 4. Contact finish:

- 01: Selective Gold Flash
- 02: Selective Gold 3U"
- 03: Selective Gold 5U"
- 04: Selective Gold 15U"
- 05: Selective Gold 30U"



FRONT EDGE OF CONNECTOR  
PCB LAYOUT

## 深圳市精拓金电子有限公司

公差一览表		制图		制图料号	
TOLERANCE UNLESS OTHERWISE	公差	DRAWING	审核	PRODUCT PART NO.	产品名称
X ±0.25	X ±5°	MM	1:1	Z-Y-B	JTY-USB-10.0/SMT-001
X ±0.20	X ±2°	SCALE	DATE	DATE	角法
XX ±0.15	XX ±1°	DATE	2013/04/24	APRD	版本
XXX ±0.10	XXX ±0.5°	APRD			AD

