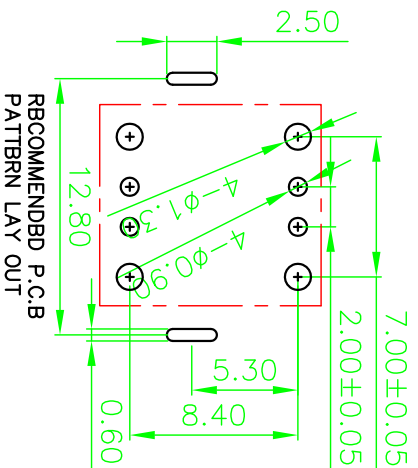
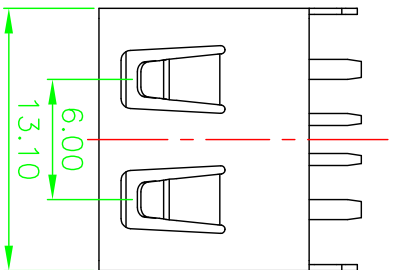
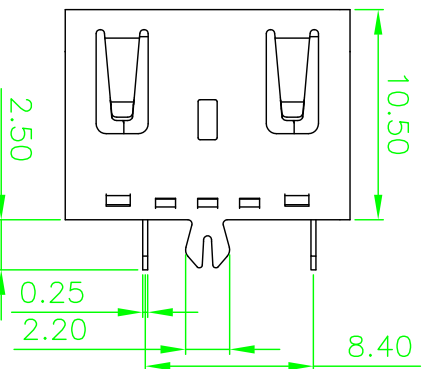
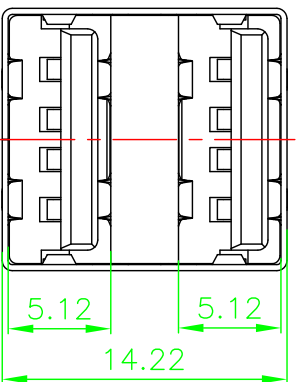


RoHS

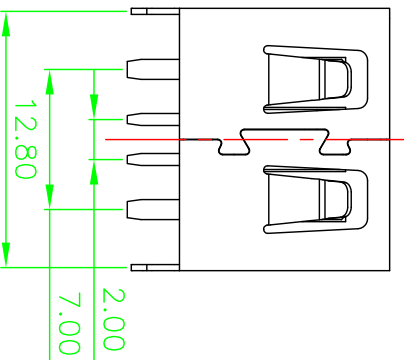
Parts Drawing



RECOMMENDED P.C.B PATTERN LAY OUT



1	907-222A1021Y102	5
2		6
3		7
4		8

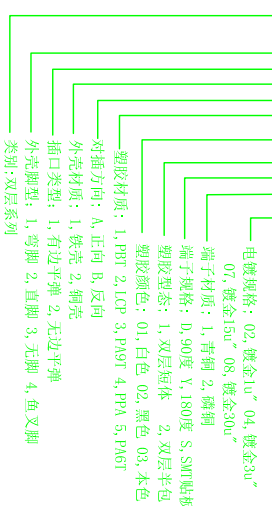


REVISIONS		DATE	ISSUED
SYM	ECN No.	MODIFICATION	

Note:

- Material:
 - Housing: High temperature thermoplastic with/black G/F,UL94v-0
 - Contact: copper alloy,t=0.25mm
 - Shell: copper/Ferroalloy alloy,t=0.30mm
- Specification:
 - Current rating:3.0A Max.
 - Dielectric withstanding voltage: 100 V(ac) for 1 min.
 - Contact resistance: 30 mΩ Max.
 - Insulation resistance: 100 MΩ Min.
 - Total mating force: 3.57 Kgf Max.
 - Total unmating force: 1.0 Kgf Min.
- Finish:
 - Contact: Plated Gold in Mating Area: Tin On Solder Talls
 - Shell: Nickel Plating
- Environmental:
 - Temperature range: -55°C~85°C

PART ON: 907-222A1021Y1XX



深圳市精拓金电子有限公司

DRAWN	TITLE	PART NO.	SCALE	SHEET	SIZE	REV.
CHECKED	USB AF 10.5短体双层直脚	SEE PART ON	1:1	1 OF 1	A4	X1
APPROVED	无边	DRAWING NO.	R907222A1021Y102			
	TOLERANCE	.XXX±.10, .XX±.25, .X±.38, ANG±5°				

3rd ANGLE PROJECTION	UNIT	mm
----------------------	------	----

1

A

B

C

D

E

5

4

3

2

1

5

4

3

2

1