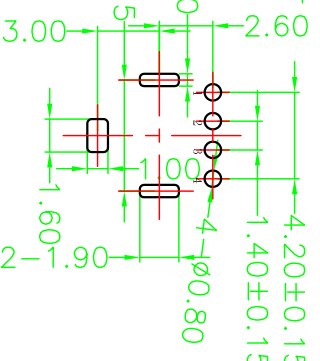
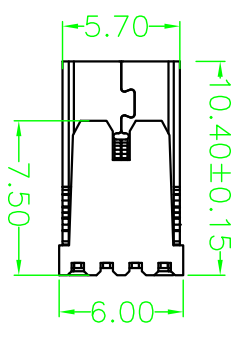
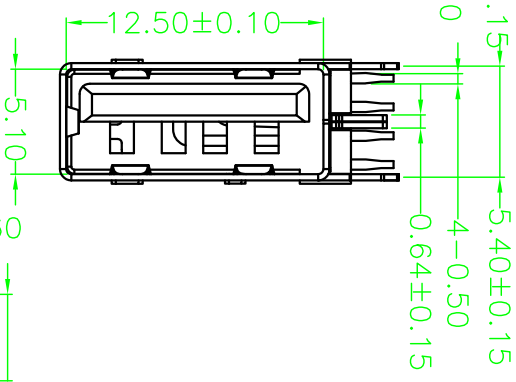
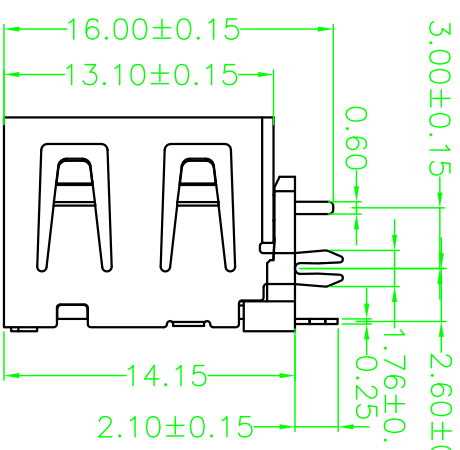
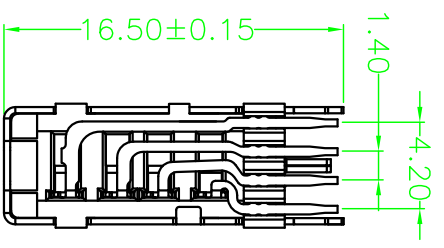
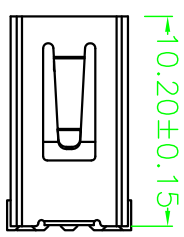


ROHS



RECOMMENDED PCB LAYOUT
GENERAL TOLERANCES: ±0.05

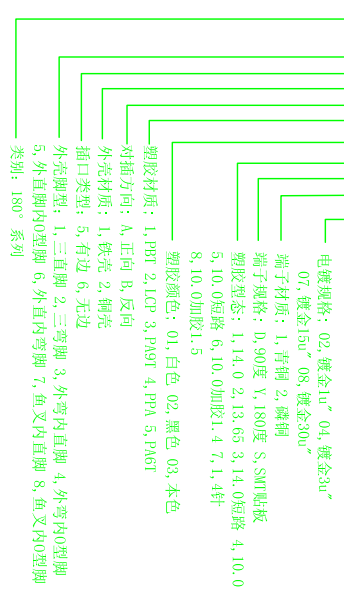
REVISIONS		
SYM/ECN No.	MODIFICATION	DATE ISSUED

Note:

- Material:
 - Housing: High temperature thermoplastic with/black G/F, UL94V-0
 - Contact: copper alloy, t=0.25mm
 - Shell: copper/Ferroalloy alloy, t=0.30mm
- Specification:
 - Current rating: 1.5A Max.
 - Dielectric withstanding voltage: 100 V(ac) for 1 min.
 - Contact resistance: 30 mΩ Max.
 - Insulation resistance: 100 MΩ Min.
 - Total mating force: 3.57 Kgf Max.
 - Total unmating force: 1.0 Kgf Min.
- Plating:
 - Terminal: Au Plating on Contact Area
Sn Plating on Solder Area
Nickel Under plating All Over
 - Shell: Nickel Plating
- Environmental:
 - Temperature range: -55°C~85°C

PART ON:

906-Z6XBXXX4D1XX



1	906-Z6XB1014D102	5	
2		6	
3		7	
4		8	

DRAWN	深圳市精拓金电子有限公司	
CHECKED	TITLE	PART NO.
APPROVED	USB AF 10.0侧插反向 外鱼叉脚内直脚无边-H13.65	SEE PART ON
	UNIT	DRAWING NO.
	mm	R906761B1014D102
	TOLERANCE	SCALE
	.XXX±.10, .XX±.25, .X±.38, ANG±5°	1:1
	3rd ANGLE PROJECTION	SHEET
		1 OF 1
		SIZE
		A4
		REV.
		X1