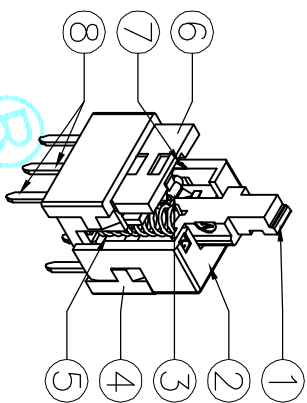
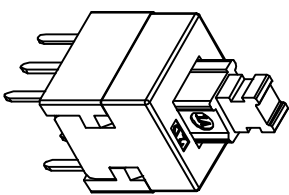
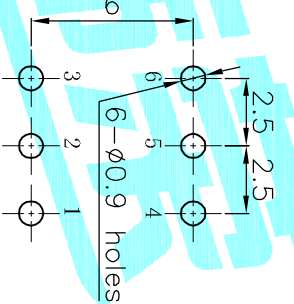
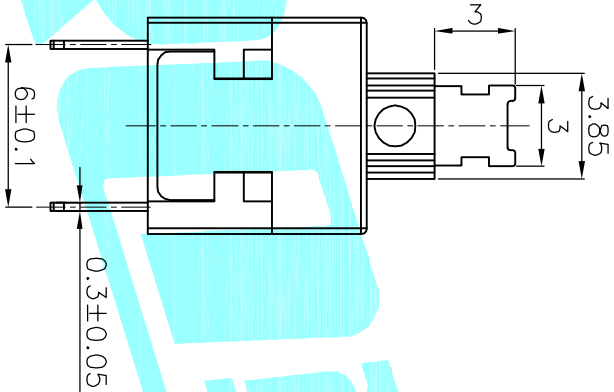
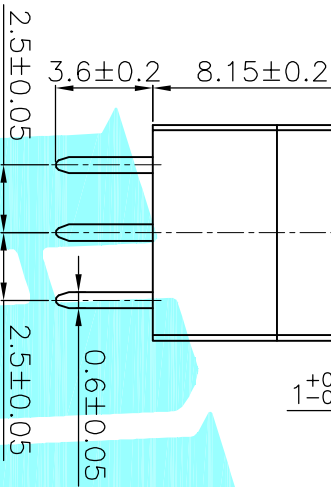
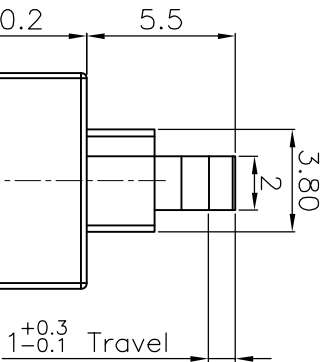


NOTE:
 1. Operating Force: 180gf±50gf
 2. Travel : 2.4±0.3mm

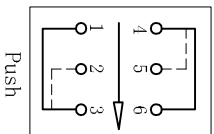
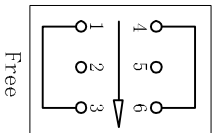


PCB Layout(Pattern Side)

NO.	Operating Type	Part No.	Base Colour	Cover Colour	Knob Colour
1	Push To Lock	K8-8081D-L1	Black	White	Blue
2	Push No Lock	K8-8081D-N1	White	Black	Black
3	Push No Sound No Lock	K8-8081D-NN	White	Black	White

⑧	Terminal	—	6	Brass strip	Plating silver	—
⑦	Contact	—	2	Phosphor bronze	Plating silver	—
⑥	Securing glue	—	2	PA66	Black	—
⑤	Spring	—	1	SUS	Natural	—
④	Base	—	1	PBT	Black	—
③	Crochet Needle	—	1	SUS	Natural	—
②	Cover	—	1	POM	White	—
①	Knob	—	1	POM	Blue	—
ITEM	PART NAME	TER'NO.	QTY.	MATERIAL	FINISHING	REMARK

Circuit Diagram



ECN NO.	REV.	DATE.	DESCRIPTION.	CHANGE.	CHECK.	APPRO.
—	A	—	NEW	—	—	—
APPROVALS			TOLERANCES ARE	30±0.15	±0.30	ANGLE
CHECKED			10~30	±0.20	±2°	UNIT: mm
DRAWN			5~10	±0.15	±2°	SCALE: 1:1
DATE			~5	±0.10	±2°	DRAWING NO.
DRAWN			J.X.Zhang	2013/10/14	TITLE: PUSHBUTTON SWITCHS	
DATE			ELECTRONICS CO.,LTD			
APPROVALS			PART NO.			
CHECKED			SCALE: 1:1			
DRAWN			PROJ:			
DATE			SHEET 1 OF 1			