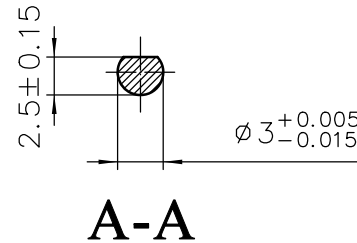
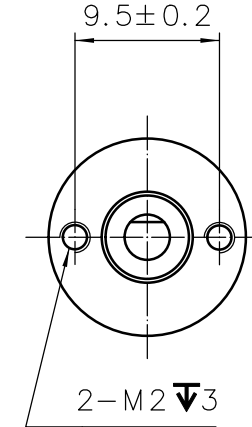
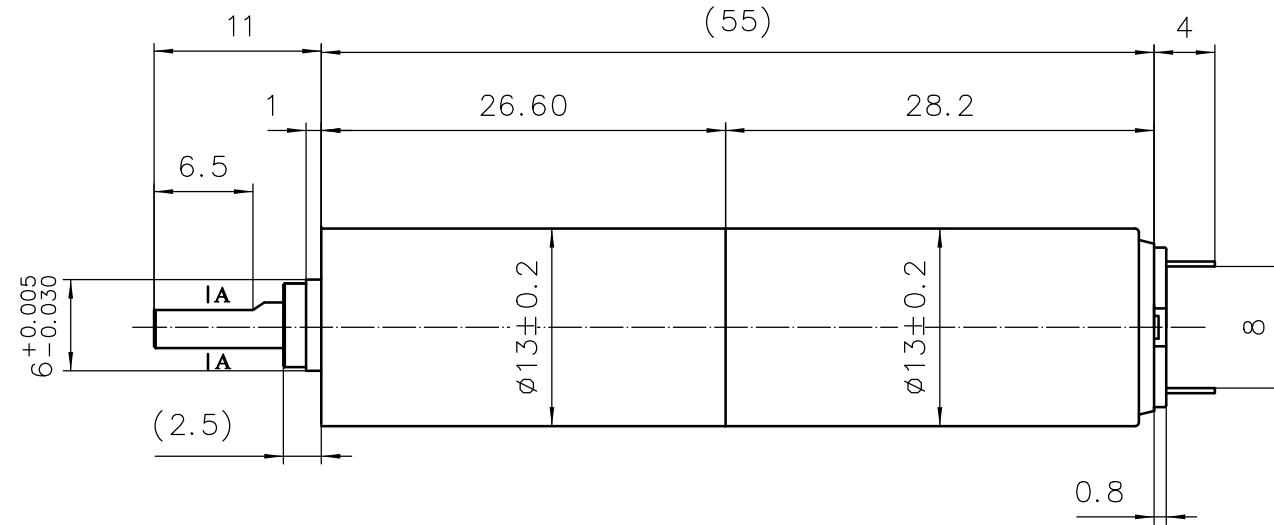
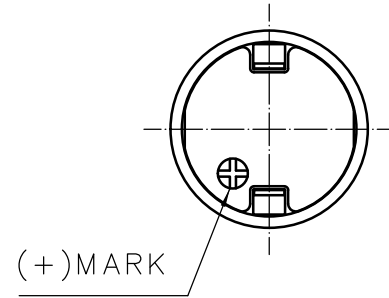


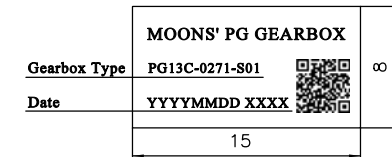
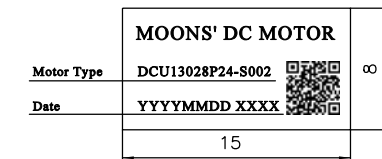
461118500023



规格/Specifications

额定电压/Nominal voltage	24		V
空载转速/No load speed	40	±10%	rpm
空载电流/No load current	30.0	±50%	mA
额定转速/Nominal speed	35		rpm
额定转矩/Nominal torque	253		mNm
额定电流/Nominal current	0.071		A
堵转转矩/Stall torque	2038		mNm
堵转电流/Stall current	0.573		A
使用温度范围/Operating Temperature	-20~+65		°C
重量/Weight	39.3		g
端电阻/Terminal resistance	41.9	±8%	Ω
转矩常数/Torque constant	19.9	±8%	mNm/A
转速常数/Speed constant	480	±8%	rpm/V
速度/转矩斜率/Speed/torque gradient	1011	±20%	rpm/mNm
电机空载转速/Motor noload speed	11700	±10%	rpm
换向器片数/Number of commutator segments	5		
电刷类型/Brush type	Precious Metal Brushes		
减速比/Reduction Ratio	271.39:1		
效率/Efficiency	66%		

铭牌/Label Detail



备注：二维码内包含电机名称和生产日期。

G		
F		
E		
D		
C		
B		
A	原始版本 Original revision	2018.07.24
REV.	版本记录 REVISION RECORD	DATE

Unit: mm
 第一角画法
 FIRST ANGLE METHOD
 未注线性与角度尺寸公差
 Tolerances for linear and angular dimensions without individual tolerance indications
 GB/T 1804-m eqv ISO 2768-1:m
 未注形状与位置尺寸公差
 Geometrical tolerance for features without individual tolerance indications
 GB/T 1184-K eqv ISO 2768-2:K

批准 Approve		
标准化 Standard		
工艺 Technology		
审核 Check		
设计 Design		

MOONS' Coreless Brushed DC Motor
 Shanghai Moons' Electric Co., Ltd.
 This document is released for information only. Its reproduction in whole or in part or its dissemination to third parties is prohibited. All trademarks and registered trademarks appearing on this document are the property of their respective owners.