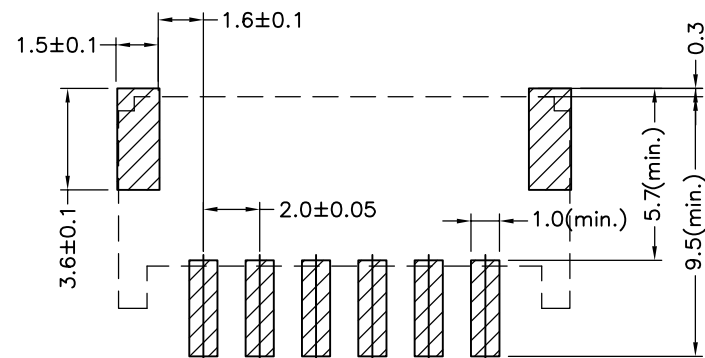
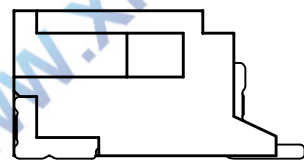
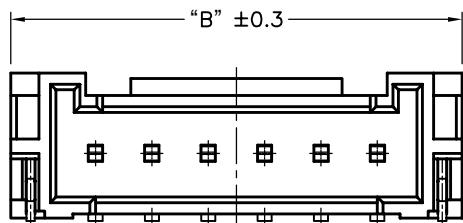
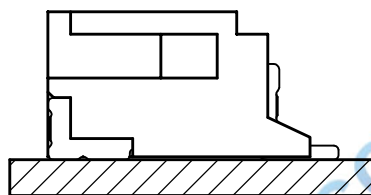
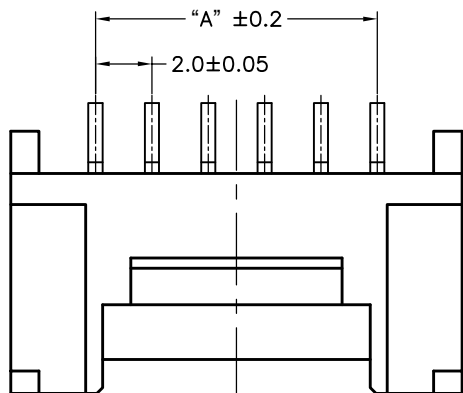


环保物料

TEL: 0769-82001899

| Poles | DIM.A | DIM.B |
|-------|-------|-------|
| 2 | 2.0 | 8.0 |
| 3 | 4.0 | 10.0 |
| 4 | 6.0 | 12.0 |
| 5 | 8.0 | 14.0 |
| 6 | 10.0 | 16.0 |
| 7 | 12.0 | 18.0 |
| 8 | 14.0 | 20.0 |
| 9 | 16.0 | 22.0 |
| 10 | 18.0 | 24.0 |
| 11 | 20.0 | 26.0 |
| 12 | 22.0 | 28.0 |
| 13 | 24.0 | 30.0 |
| 14 | 26.0 | 32.0 |
| 15 | 28.0 | 34.0 |
| 16 | 30.0 | 36.0 |



SPECIFICATIONS

- 1.Voltage rating: 250V AC, DC
 - 2.Current rating: 2A, AC, DC
 - 3.Withstanding Voltage: 1000V AC/minute
 - 4.Insulation resistance:1000M min
 - 5.Temperature range: -25 ° C+85 ° C
 - 6.Contact resistance: 20m max
- WAFER

Housing Material: PA9T UL 94V0
 Pin Material: Phosphor Bronze or Brass
 Contact Area Plating: Plated Tin or Plated Gold
 Mates with :P2016 series Housing
 Poles:02-16P
 Part No.: M2016RS-xx-9T-R

R=卷装 无=管装
 Pin位数

P.C.B LAYOUT

| | | | | | | | | | | | |
|----|--------------|--|------|----------------------------|-------|-------|--------|--------------------------------------|-------------------------------|---------|-------------|
| | | | | TOLERANCE UNLESS OTHERWISE | | DRAWN | CK tan | XFCN兴飞连接器有限公司 | | SHEET | 1/1 |
| | | | | X. | ±0.30 | X° | ±5° | CONNECTORS XFCN CONNECTORS CO., LTD. | | DATE | 2010. 4. 12 |
| | | | | .X | ±0.20 | .X° | ±2° | PRODUCT NAME | 2.00mm Crimp Style Connectors | UNITS | mm |
| | | | | .XX | ±0.08 | .XX° | ±1° | PART. NO. | M2016RS-xx-9T-R | SCALE | 1:1 |
| A0 | MODIFICATION | | DRAW | DATE | .XXX | ±0.03 | .XXX° | VIEW | ⊕ | DWG NO. | 009 |