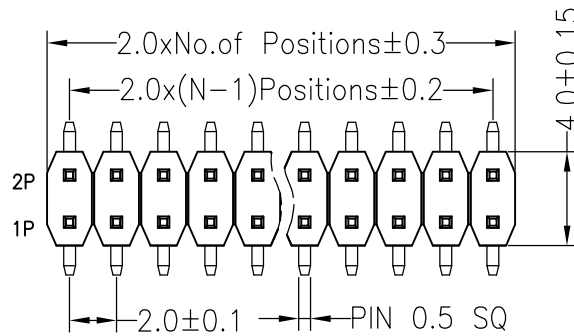


RoHS

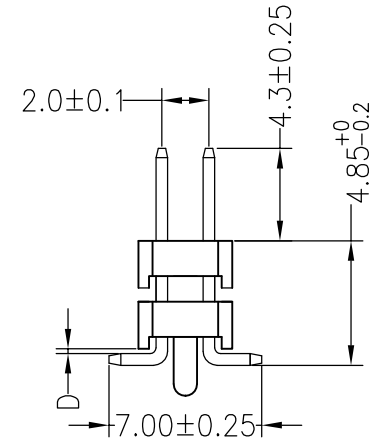
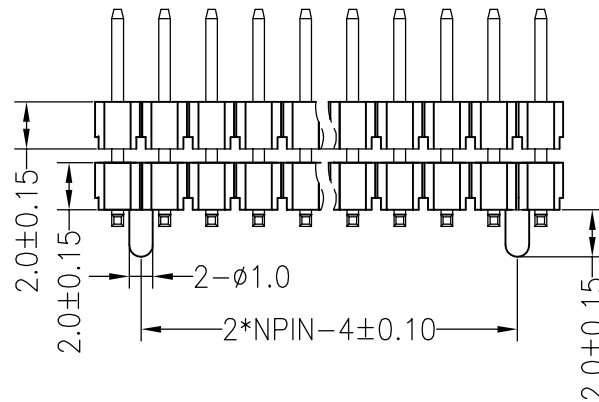
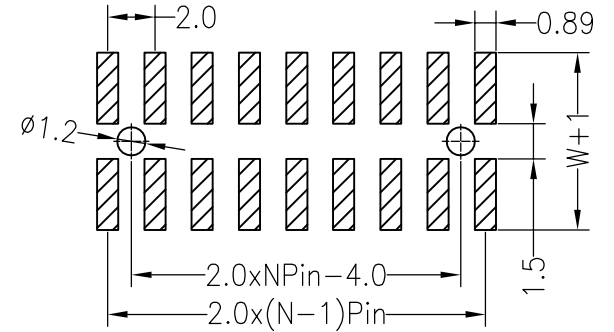
SPECIFICATIONS

Rated Current:1.5AMP
 Contact Resistance:20mΩ Max
 Withstand Voltage:500V AC/DC
 Insulation Resistance:1000MΩ Min
 Operation Temperature:-40°C to +105°C

Contact Material:Brass
 Contact Plating:Au Over Ni
 Insulator Material:Polyester(UL94V-0)
 Standard: PA6T
 Max.Processing Temp: 230°C for 30-60 seconds
 (260°C for 5 seconds)



Recommended P.C.B Layout(Top Side)
 (PCB BOARD TOLERANCE±0.05)



Dimension antitheses list					
ITEM	PA	D	PB	W	L
Standard					
Alternate	4.30	0	4.85	7.00	11.00

深圳市连盛精密连接器有限公司

PART NO.

PH-00371

TITLE:

2.0PH 2x10pin 双塑 SMT 带柱

OPERATION

SCALE

FIT

X.X ±0.30

UNIT

mm

X.XX ±0.20

CHECK

X.XXX ±0.10

APPROVE

Angle ±3'

DIM TOL

PROJ.

1/1

◆ ↗

A0

2012.04.11

NEW DRAWING

REV

DATE

MODIFICATION DESCRIPTION

CHANGE

1

2

3

4

5

6

7

8

9