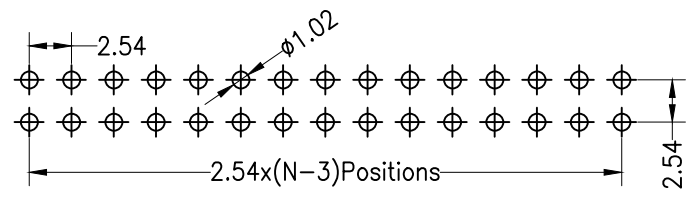
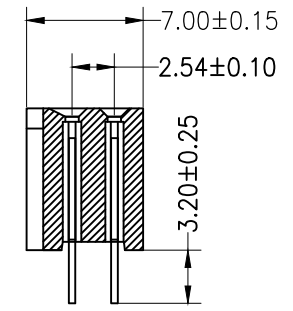
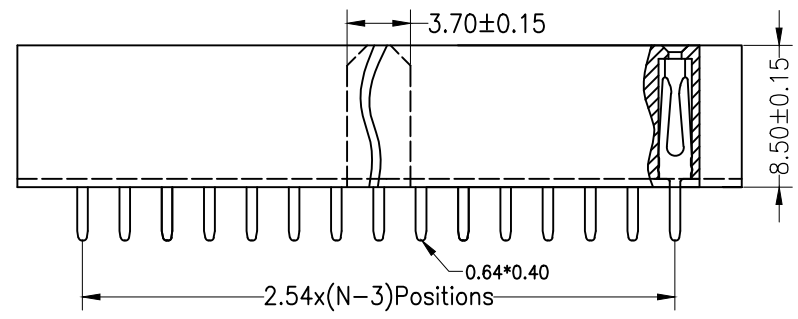
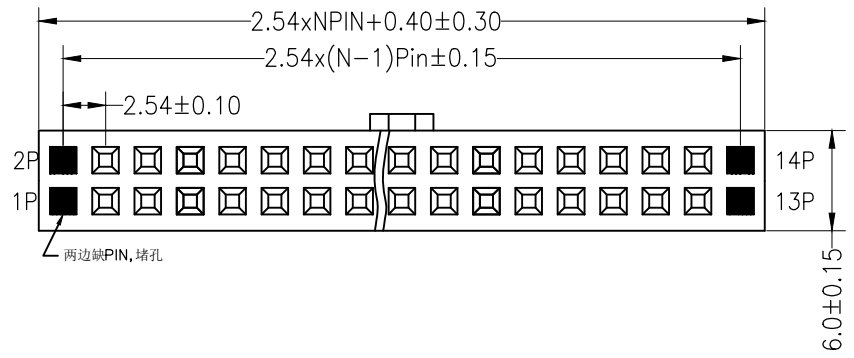


RoHS

SPECIFICATIONS

Rated Current:3.0AMP
 Contact Resistance:20mΩ Max
 Withstand Voltage:1000V AC/DC
 Insulation Resistance:1000MΩ Min
 Operation Temperature:-40°C to +105°C

Contact Material:Brass
 Contact Plating:Au Over Ni
 Insulator Material:Polyester(UL94V-0)
 Standard: PA6T
 Max.Processing Temp: 230°C for 30-60 seconds
 (260°C for 10 seconds)



Recommended P.C.B Layout(Top Side)
 (PCB BOARD TOLERANCE±0.05)

				OPERATION		DRAW	SCALE	FIT	深圳市连盛精密连接器有限公司	
				X.X	±0.30		UNIT	mm		
				X.XX ±0.20		CHECK	SIZE	A4	PART NO.	
				X.XXX ±0.10			SHEET	1/1	FH-00764	
A0	2012.03.28	NEW DRAWING		Angle ±3°		APPROVE	PROJ.	TITLE:		2.54FH H8.5mm 2x7pin 180° W5.0mm
REV	DATE	MODIFICATION DESCRIPTION		CHANGE	DIM	TOL				