



REV.	DESCRIPTION	NAME	DATE
A	NEWS ISSUE		

- Contact Resistance: 40mOHM Max. ;
- Dielectric Withstanding Voltage: 100V AC For 1 Minute;
- Insulation Resistance: 100M OHM Min. ;
- Mating And Unmating Force:  
Mating Force: 5~20N  
Unmating Force: 8~20N (0~1000cycle) ;  
6~20N (1001~10000cycle) ;
- Durability: 10000 Cycles;

USB TYPE-C FULL-FEATURED RECEPTACLE INTERFACE PIN ASSIGNMENTS

PIN	Signal Name	Description	PIN	Signal Name	Description
A1	GND	Ground return	B12	GND	Ground return
A2	SSTxp1	Positive half of first SuperSpeed TX differential pair	B11	SSRxp1	Positive half of first SuperSpeed RX differential pair
A3	SSTxm1	Negative half of first SuperSpeed TX differential pair	B10	SSRxm1	Negative half of first SuperSpeed RX differential pair
A4	Vbus	Bus Power	B9	Vbus	Bus Power
A5	CC1	Configuration Channel	B8	SBt2	Sideband Use (SBU)
A6	Dp1	Positive half of the USB 2.0 differential pair-Position 1	B7	Dn2	Negative half of the USB 2.0 differential pair-Position 2
A7	Dn1	Negative half of the USB 2.0 differential pair-Position 1	B6	Dp2	Positive half of the USB 2.0 differential pair-Position 2
A8	SBU1	Sideband Use (SBU)	B5	CC2	Configuration Channel
A9	Vbus	Bus Power	B4	Vbus	Bus Power
A10	SSRxm2	Negative half of second SuperSpeed RX differential pair	B3	SSTx2	Negative half of second SuperSpeed TX differential pair
A11	SSRxp2	Positive half of second SuperSpeed RX differential pair	B2	SSTx2	Positive half of second SuperSpeed TX differential pair
A12	GND	Ground return	B1	GND	Ground return

Item	Title	Material	Dispose	Remark
1	Shell	Stainless Steel	Ni:30u" Min.	
2	GND Plate	Stainless Steel		
3	Mid Plate	Stainless Steel	Solder Tails: Matt Tin	
4	Top Contact	Copper Alloy	Mating Area: See P/N	
5	Bottom Contact	Copper Alloy	Solder Tails: Matt Tin	
6	Insulator	High Temperature Plastic	UL 94V-0	Black

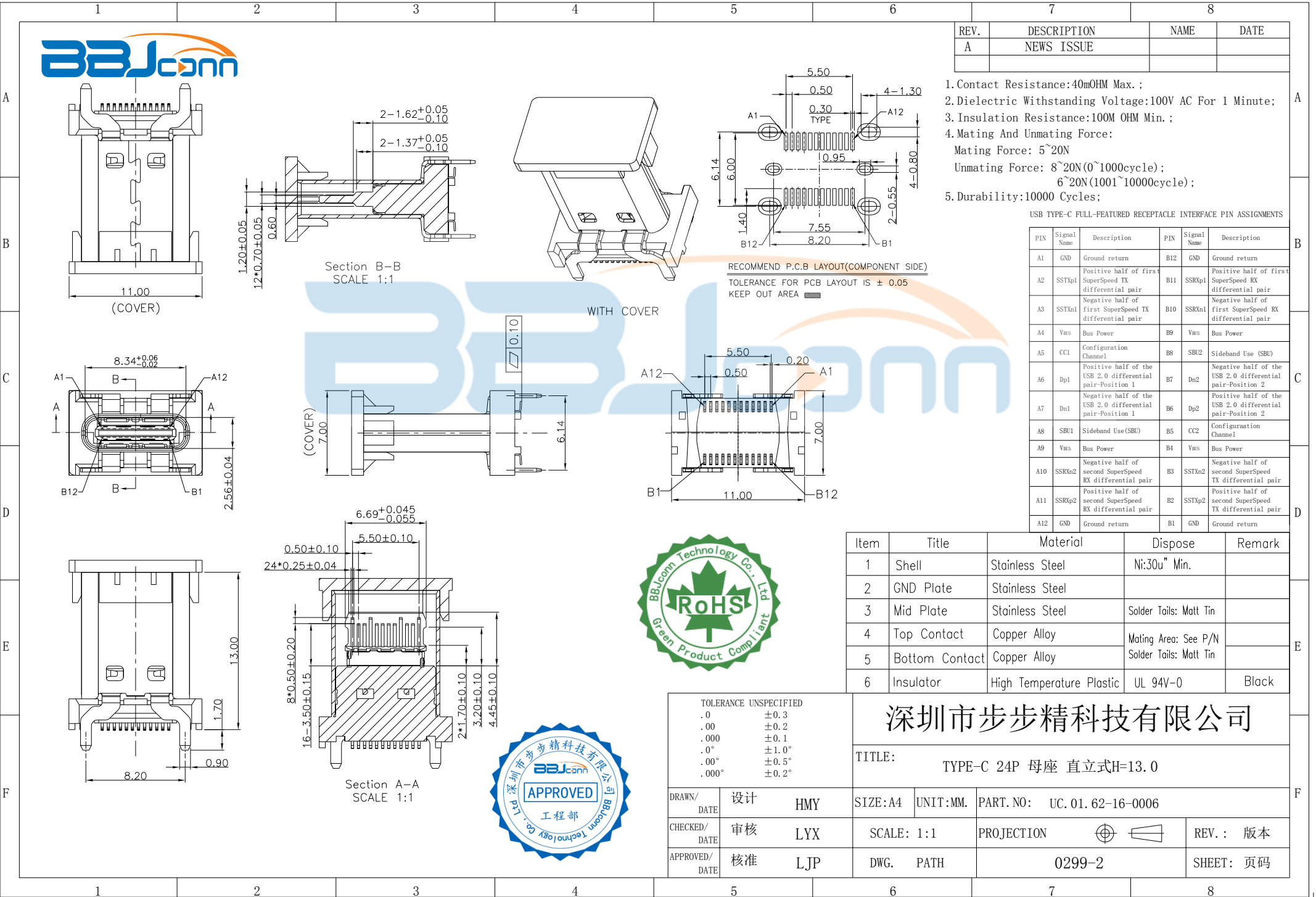
深圳市步步精科技有限公司

TITLE: TYPE-C 24P 母座 直立式H=13.0

TOLERANCE UNSPECIFIED

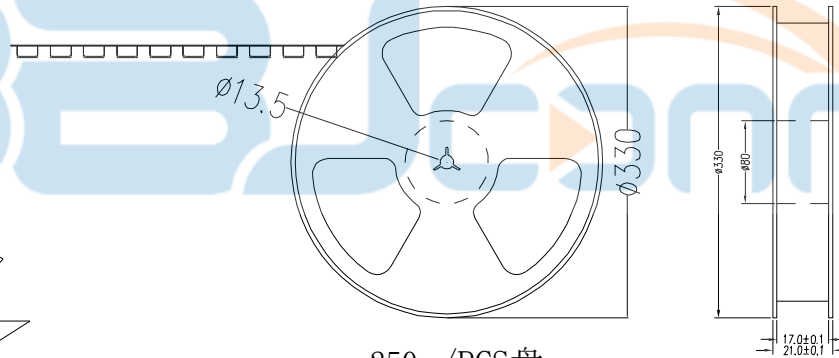
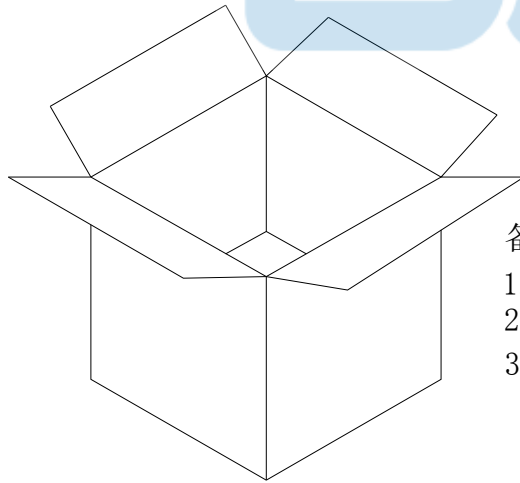
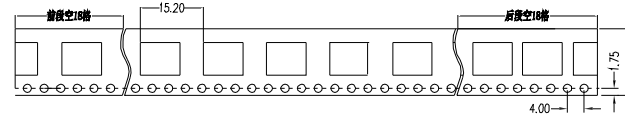
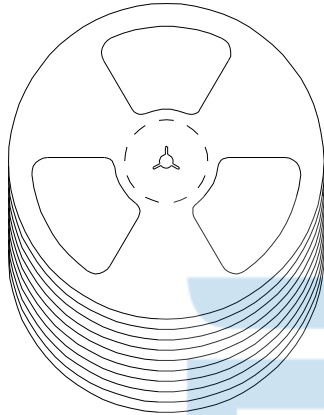
.0	±0.3
.00	±0.2
.000	±0.1
.0°	±1.0°
.00°	±0.5°
.000°	±0.2°

DRAWN/ DATE	设计	HMY	SIZE: A4	UNIT: MM.	PART. NO: UC.01.62-16-0006
CHECKED/ DATE	审核	LYX	SCALE: 1:1	PROJECTION	REV.: 版本
APPROVED/ DATE	核准	LJP	DWG. PATH	0299-2	SHEET: 页码





REV.	DESCRIPTION	NAME	DATE
A	NEWS ISSUE		



250 /PCS盘



备注:

1. 包装数量: 250 /PCS/盘, 10盘/箱或15盘/箱。
2. 包装袋长度: 每盘前后各空10-20个空格, 中间包装。
3. 材质:  
载体: 聚丙烯 (PS), 阻抗 $10^{6-9} \Omega$   
上带: 聚乙烯 (PET), 阻抗 $10^{6-11} \Omega$   
卷盘: 聚苯乙烯。

纸箱规格: 345\*345\*23MM

纸箱规格: 345\*345\*35MM

TOLERANCE UNSPECIFIED			深圳市步步精科技有限公司			
.0	±0.35		TITLE: TYPE-C 24P 母座 直立式H=13.0			
.00	±0.25					
.000	±0.15					
X.°	±2.00°					
CUSTOMER DRAWING						
DRAWN/ DATE	设计 HMY	SIZE:A4	UNIT:MM.	PART. NO: UC.01.62-16-0006		
CHECKED/ DATE	审核 LYX	SCALE: 1:1	PROJECTION			REV.: 版本
APPROVED/ DATE	核准 LJP	DWG. PATH	0299-2		SHEET: 页码	