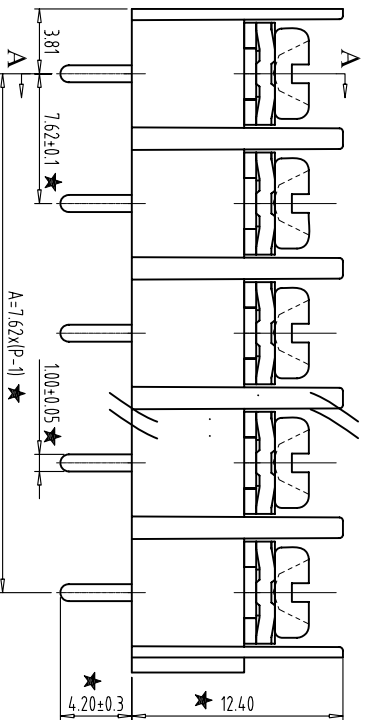
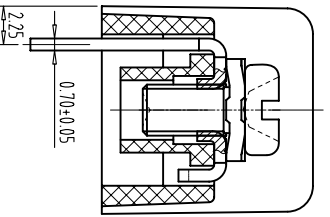
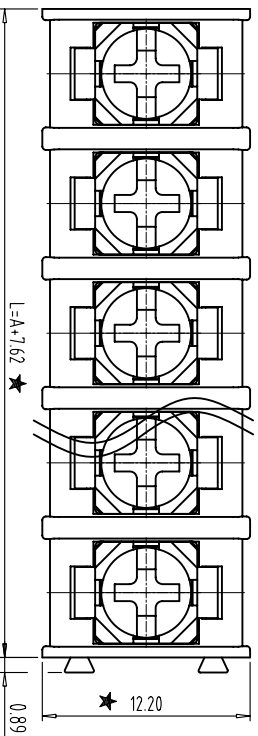
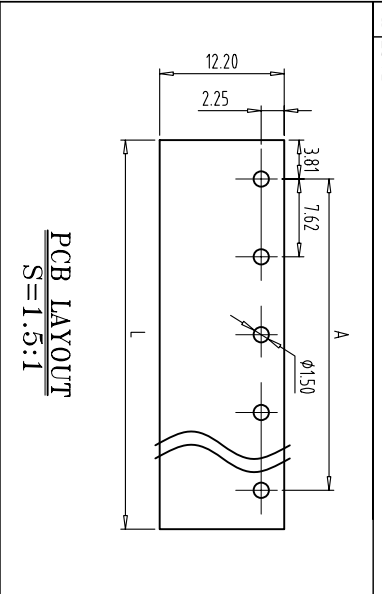


FILE: ZB02/

REVISIONS

ZONE	REV	DESCRIPTION	DATE	APPROVED



- NOTES:
1. Rating:300V 20A;
 2. Insulation Withstands Voltage: AC2000V/1MIN
 3. Insulation Resistance: 500MΩ or more at DC500V
 4. Using Temperature Range: -40°C/+105°C
 5. Screw Torque Value:0.6Nm
 6. Suitable Electric Wire: 12-22AWG
 - 7, "★" the important dimension.

Total Pitch Tolerances												Nominal dimension range											
over	0	30	53	70	90	115	150	250	350	500	70	90	115	150	200	250	320	0	10	all	0	100	150
±0.18	±0.20	±0.25	±0.3	±0.35	±0.44	±0.60	±0.70	±0.85	±0.20	±0.25	±0.30	±0.35	±0.44	±0.55	±0.70	±0.80	±0.90	0.2	0.3	0.3	0.2	0.3	0.5



THIRD ANGLE PROJECTION

CHKD: /

DRFT: /

MAXU 慈溪市迈旭电子有限公司
Cixi Maixu Electronics Co., Ltd.

MX7620-XXP-XC

SIZE	FSCM NO.	DWG NO.	REV
MM (INCH)		DO NOT SCALE DRAWING	