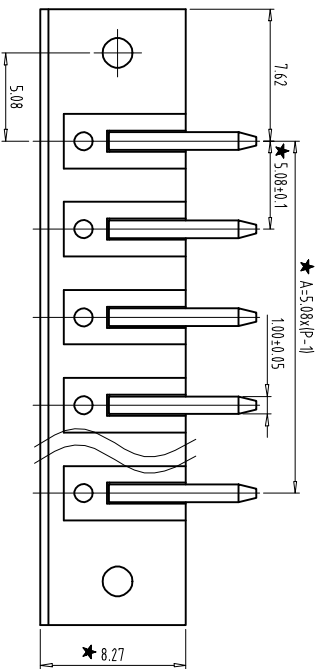
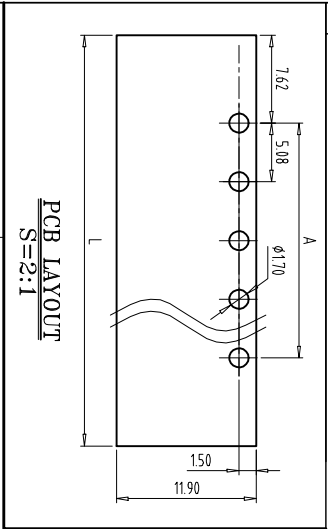
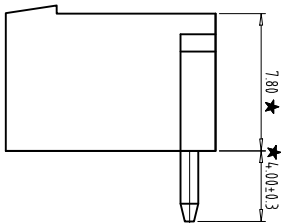
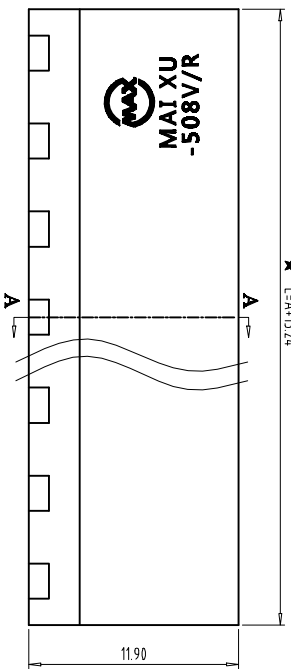
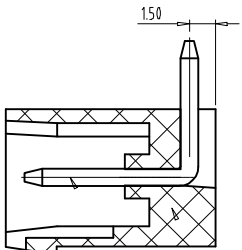
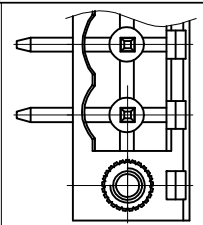


FILE: MX22/



ZONE	REV	DESCRIPTION	DATE	APPROVED
REVISIONS				



- NOTES:
1. Rating: 300V 15A;
 2. Insulation Withstands Voltage: AC2000V/MIN
 3. Insulation Resistance: 500MΩ or more at DC500V
 4. Using Temperature Range: -40°C~+105°C
 5. "★" is the important dimension
 6. RoHS compliance



Total Pitch Tolerances		Nominal dimension range	
in mm		in mm	
0	over	0	over
30	to	30	to
53	to	53	to
70	to	70	to
90	to	90	to
115	to	115	to
150	to	150	to
250	to	250	to
350	to	350	to
500	to	500	to
0	to	0	to
30	to	30	to
53	to	53	to
70	to	70	to
90	to	90	to
115	to	115	to
150	to	150	to
200	to	200	to
250	to	250	to
320	to	320	to
10	to	10	to
0.2	to	0.2	to
0.3	to	0.3	to
0.3	to	0.3	to
0.2	to	0.2	to
0.3	to	0.3	to
0.5	to	0.5	to

 THIRD ANGLE PROJECTION		 慈溪市迈旭电子有限公司 Maixu Cixi Maixu Electronics Co., Ltd.	
CHKD: /	SIZE: FSCM NO.	DWG NO:	REV
DFT: /	MM (INCH)	DO NOT SCALE DRAWING	SHEET
<h1>MX2EDG-5.08RM</h1>			