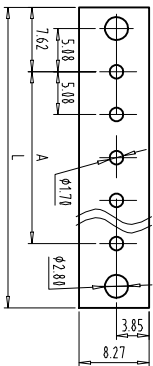
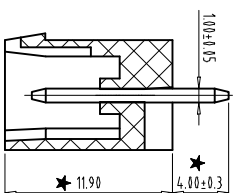
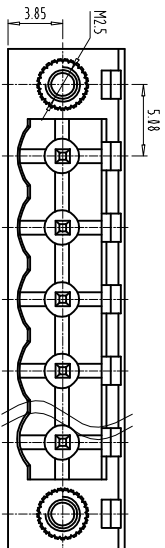
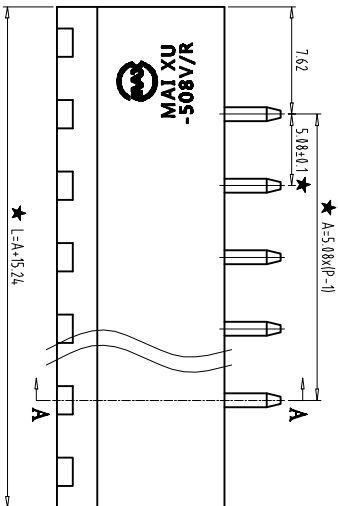
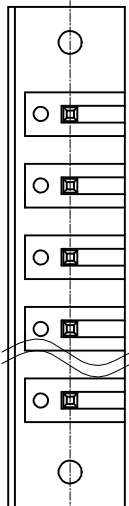


FILE: MX02/



PCB LAYOUT
S=1.5:1



SECTION: A-A

REVISIONS		DATE	APPROVED
ZONE	REV	DESCRIPTION	

- NOTES:
1. Rating 300V 15A ;
 2. Insulation Withstands Voltage: AC2000V/MIN
 3. Insulation Resistance: 500MΩ or more at DC500V
 4. Using Temperature Range: -4.0°C~+105°C
 5. "★" is the important dimension
 6. RoHS compliance

Total Pitch Tolerances

	0	30	53	70	90	115	150	250	350	500	30	53	70	90	115	150	200	250	320	10	0.2	0.3	0.3	0.2	0.3	0.5	
over	to	to	to	to	to	to	to	to	to	to	to	to	to	to	to	to	to	to	to	to	to	to	to	to	to	to	to
±0.18	±0.20	±0.25	±0.3	±0.35	±0.44	±0.60	±0.70	±0.85	±0.20	±0.25	±0.30	±0.35	±0.44	±0.55	±0.70	±0.80	±0.90	0.2	0.3	0.3	0.2	0.3	0.3	0.2	0.3	0.5	

Nominal dimension range

≡

≡

//



THIRD ANGLE PROJECTION

CHKD: /

DRFT: /

SIZE	FSOM NO.	DWG NO.	REV
MM (INCH)			
DO NOT SCALE DRAWING			SHEET

Maxu Cixi Electronics Co., Ltd.
慈溪市迈旭电子有限公司

MX2EDG-5.08VM